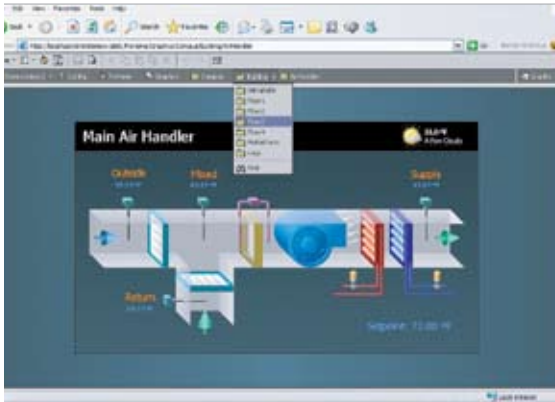


# ENS-1 Enterprise Network Server



## ENS-1 Enterprise Network Server

The TAC I/A Series™ Enterprise Network Server is a flexible network server for ENC-410 and ENC-520 controllers, supporting peer-to-peer connectivity. The Enterprise Network Server is designed to harness the power of the Internet and provide efficient integration of standard open protocols™, such as BACnet™ and LonWorks™. The Enterprise Network Server creates a powerful HTTP network environment with comprehensive database management, alarm management, and messaging services. In addition, the Enterprise Network Server provides an engineering environment and graphical user interface.

## SPECIFICATIONS

### SYSTEM REQUIREMENTS

**Note:** These are recommended specifications. While ENS-1 may run on a PC that does not meet these specifications, a PC meeting or exceeding the recommended specifications should be used to ensure efficient operation.

#### Processor

Intel Pentium™ 4, 3.0 GHz or higher.

#### Memory

2 GB RAM, minimum.

#### Hard Drive

10 GB, minimum (100 GB or higher recommended). SCSI or SATA drives recommended.

#### Additional Drives

R/W CD drive (minimum), R/W DVD recommended, especially for large database files and archives.

#### Display

Video card and monitor capable of displaying 1024 x 768 pixel resolution.

#### Network Support

Ethernet adapter (10/100 megabit with RJ-45 connector)

#### Operating System

Microsoft™ Windows™ XP Professional, Windows 2003 Server (if Microsoft IIS is disabled), or Windows Vista Ultimate.

#### Browser

Microsoft Internet Explorer 5.0 or later, or Mozilla Firefox.

## FEATURES

- Java™ (Sun™ Hot Spot) enabled user interface.
- Supports an unlimited number of users over the Internet or intranet with a standard Web browser.
- Optional enterprise-level data archival using SQL, Oracle or DB2 database, and HTTP/HTML/XML text formats.
- “Audit Trail” of database changes, database storage and backup, global time functions, calendar, central scheduling, control and energy management routines.
- Sophisticated alarm processing and routing that includes e-mail and paging.
- Internet time synchronization capability for all ENC stations, if desired.
- Provides access to alarms, logs, graphics, schedules and configuration data with a standard Web browser.
- Password protection and security, using standard Java authentication and encryption techniques.
- HTML-based help system that includes comprehensive on-line system documentation.
- Supports multiple ENC-410 and ENC-520 controllers connected to a local Ethernet or the Internet.
- Provides online and offline use of the Workbench™ graphical application configuration tool and a comprehensive Java Object Library.
- Optional support for database and Ethernet-based drivers available.

## COMMUNICATIONS

Full-time high speed ISP connection recommended for remote site access (such as T1, xDSL, cable modem).

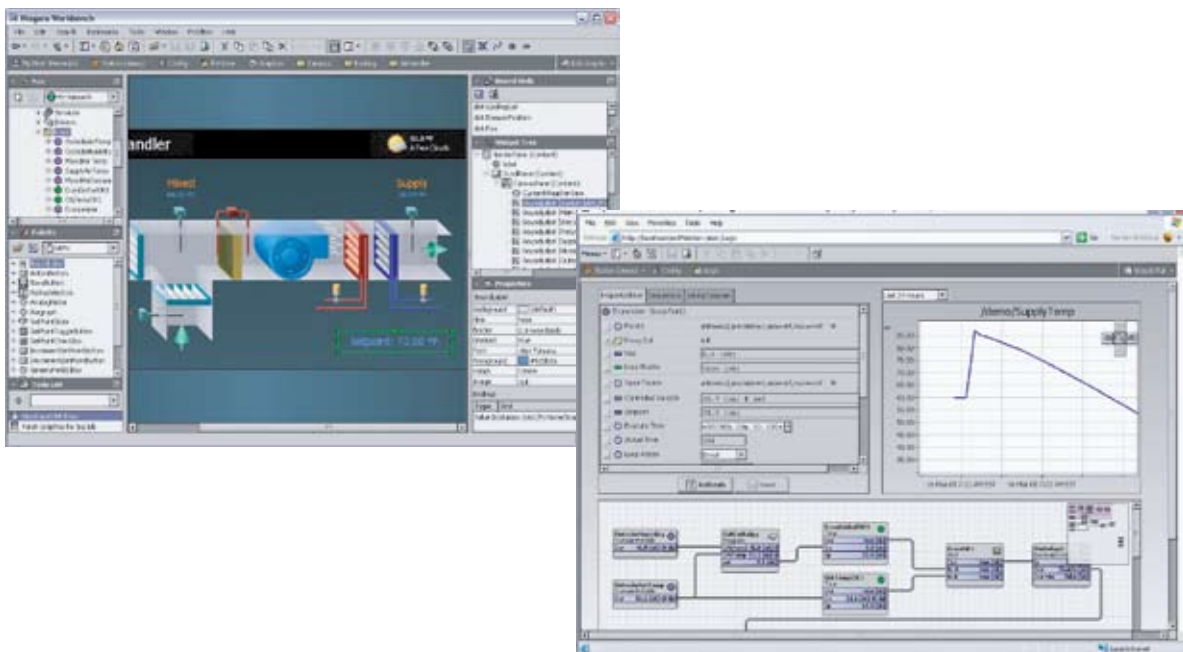
**MODELS**

Part Number	Description
ENS-1	TAC I/A Series Enterprise Network Server for ENC-410 and ENC-520 controllers.

**OPTIONS**

Part Number	Description	Part Number	Description
ENS-DBS-DB2	IBM DB2 database driver	ENS-MOD-500	Additional 500 Modbus TCP points
ENS-DBS-ORCL	Oracle database driver	ENS-OPC	OPC Client driver— includes 500 OPC points
ENS-DBS-SQL	Microsoft SQL database driver	ENS-OPC-500	Additional 500 OPC points
ENS-BAC	BACnet IP Client driver — includes 500 BACnet IP points	ENS-SNMP	SNMP driver— includes 500 SNMP points
ENS-BAC-500	Additional 500 BACnet IP points	ENS-SNMP -500	Additional 500 SNMP points
ENS-MOD	Modbus TCP driver— includes 500 Modbus TCP points		

**USER INTERFACE**



Distributed, manufactured, and sold by Schneider Electric. I/A Series trademarks are owned by Invensys Systems, Inc. and are used on this product under master license from Invensys. Invensys does not manufacture this product or provide any product warranty or support. For service, support, and warranty information, contact Schneider Electric.



On October 1st, 2009, TAC became the Buildings Business of its parent company Schneider Electric. This document reflects the visual identity of Schneider Electric, however there remain references to TAC as a corporate brand in the body copy. As each document is updated, the body copy will be changed to reflect appropriate corporate brand changes.

All brand names, trademarks and registered trademarks are the property of their respective owners. Information contained within this document is subject to change without notice.

**Schneider Electric** 1354 Clifford Avenue, P.O. Box 2940, Loves Park, IL 61132-2940, USA 1-888-444-1311 www.schneider-electric.com/buildings