

ASCO I85PQ SERIES POWER TRANSFER LOAD CENTER RATED 125 AMPS, 240V SINGLE PHASE, 3 WIRE, TYPE I ENCLOSURE

NOTES:

- Power Transfer Load Center constructed in accordance with UL 67 Standard for Panelboards. The Power Transfer Load Center is intended for use ONLY in Optional Standby Systems in accordance with the National Electrical Code, NEC/NFPA 70, Article 702.
 - Automatic & Manually Operated Power Transfer Switch: ASCO D185, 2 pole, 125 amp, 240 vac. UL Listed to UL 1008 Standard for Transfer Switching Equipment.
- Transfer Controller (Automatic Type Only) - ASCO Group 4 Automatic Transfer Switch Controller including: (Refer to 185 Series Operator's Manual, PN 381333-319, supplied with the transfer switch for detailed information)
- User Controls & Status Indication**
 Load on Preferred Source (Utility) LED indicator - green
 Load on Alternate Source (Generator) LED indicator - red
 Preferred Source (Utility) Acceptable LED indicator - green
 Alternate Source (Generator) Acceptable LED indicator - red
 Automatic Engine-Generator Exerciser (Setting & Engine Running) LED indicator
 Transfer Test membrane pushbutton
 Bypass Time Delay (active time delay or engine-generator exercise period) membrane pushbutton
 Set Engine Exerciser membrane pushbutton
- Time Delays**
 Override Momentary Preferred Source (Utility) Outages - Factory set at 3 seconds
 Transfer to Alternate Source (Generator) - Factory set at 10 seconds
 Override Momentary Alternate Source (Generator) Outages - Factory set at 4 seconds
 Retransfer to Preferred Source (Utility) - 5 minutes/fix
 Engine-Generator Unloaded Running (Cooldown) Period - Factory set at 5 minutes

Control Signals

Engine-Generator Automatic Starting Controls - (1) form C contact

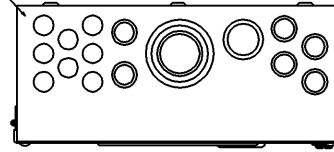
Remote Controls (Using Customer Supplied Contacts)

Remote Test Feature
 Remote Test with Automatic Retransfer to Preferred Source (Utility) Feature
 Bypass Time Delay on Retransfer to Preferred Source (Utility) Feature

- Enclosure: Listed to UL 50 Standard for Enclosures for Electrical Equipment, Type 1 Indoor. Constructed of 16 Gauge Steel. Finish - ANSI 49 Gray, Polyester Powder Coating.
- Short Circuit Ratings:
 (Main): 10kA at 240 vac. The Transfer switch Preferred (Utility) and Alternate (Generator) terminals must be protected by a remote overcurrent circuit breaker of any type suitable for the short circuit rating of this unit.
 (Branch): Branch ratings as follows when used with the specified branch devices. 10kA using Square-D QO catalog prefix circuit breakers rated: 1 pole 10-70a, 2 pole 10-125a.
- Load Center: Square-D QO 125 amp, 120/240 vac, with 100% rated neutral, 20 spaces, accepts plug-on branch devices.
- Grounding provisions for Preferred (Utility) and Alternate (Generator) sources and Load.

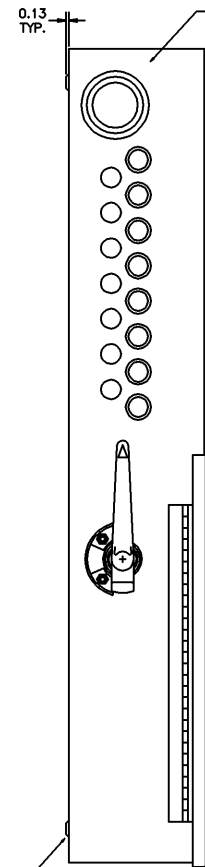
- The Power Transfer Load Center must be protected by suitably sized circuit breakers feeding the Preferred and Alternate source terminals. The rating of the circuit breakers must be based on the requirements of the National Electrical Code, NEC/NFPA 70, for the power transfer Load Center's nameplate ampere and short circuit current ratings.
- Conductor Sizes - 125 amps: (1) #14 AWG to 4/0 AWG Al or Cu, Preferred (Utility) Source and Alternate (Generator) Source

(8) 0.50 IN. SINGLE KNOCKOUTS & (6) 0.50/0.75 IN. (1) 1.0/1.25 IN. (1) 1.25/1.5/2.0/2.5 IN. COMBINATION KNOCKOUTS

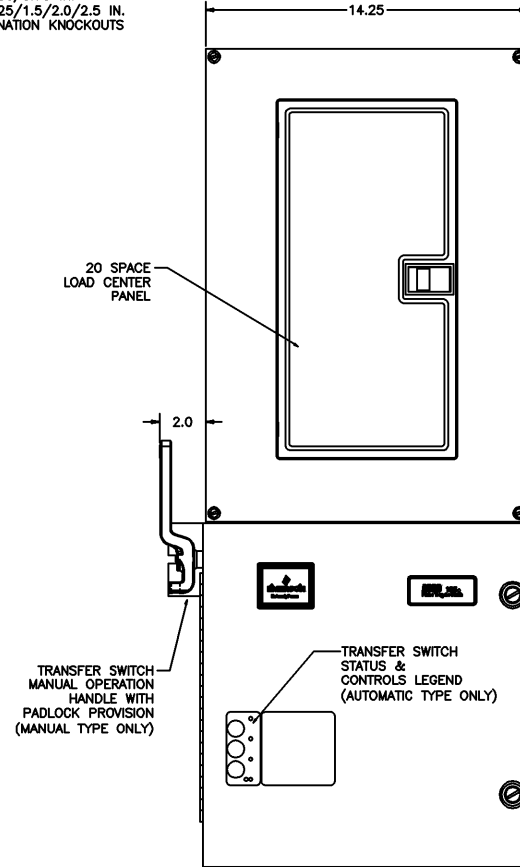


TOP WITH DOOR & LOAD CENTER PANEL INSTALLED

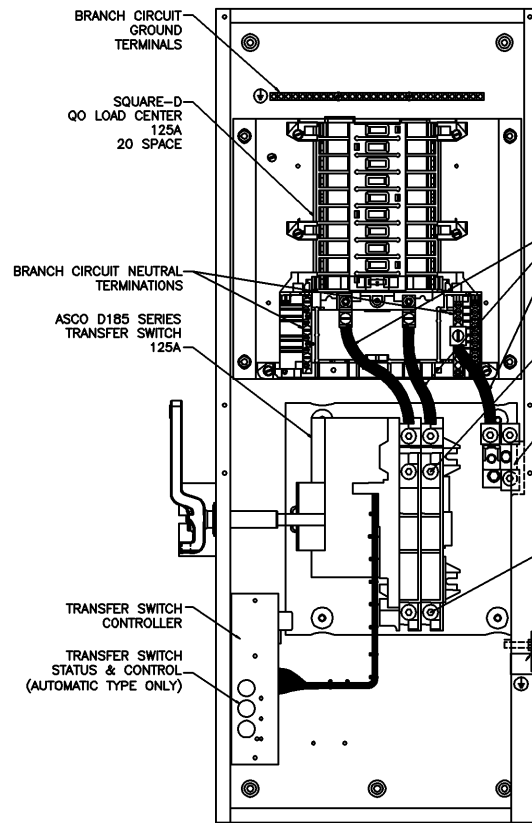
(7) 0.50 IN. (2) 0.31 IN. (1) 1.0 IN. SINGLE KNOCKOUTS & (8) 0.50/0.75 IN. (1) 1.25/1.5/2.0/2.5 IN. COMBINATION KNOCKOUTS



LEFT SIDE TRANSFER SWITCH WITH DOOR

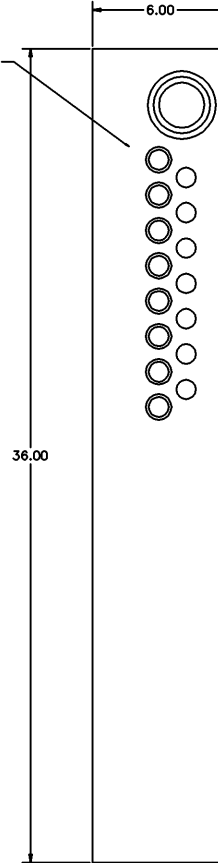


FRONT TRANSFER SWITCH WITH DOOR & LOAD CENTER PANEL INSTALLED

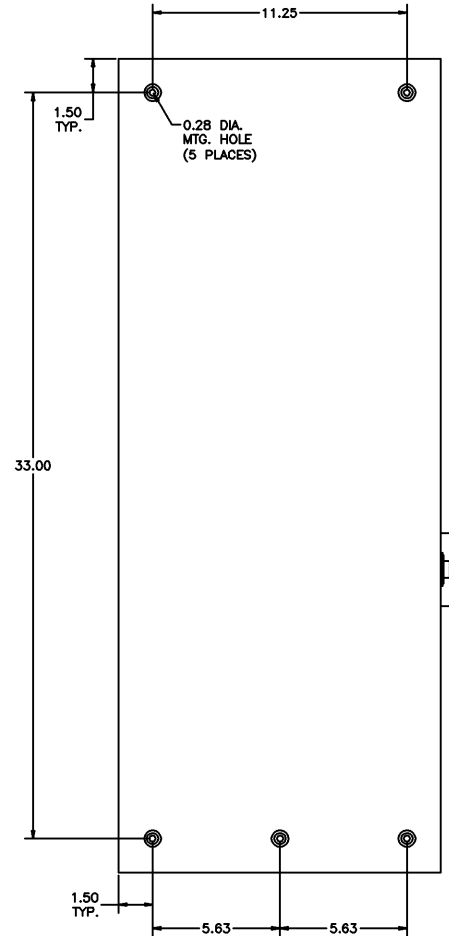


FRONT TRANSFER SWITCH WITHOUT DOOR & LOAD CENTER PANEL

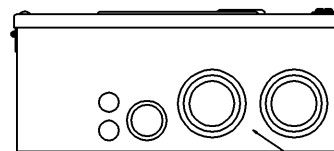
(7) 0.50 IN. SINGLE KNOCKOUTS & (8) 0.50/0.75 IN. (1) 1.25/1.5/2.0/2.5 IN. COMBINATION KNOCKOUTS



RIGHT SIDE TRANSFER SWITCH WITHOUT DOOR & LOAD CENTER PANEL



REAR TRANSFER SWITCH



BOTTOM WITH DOOR & LOAD CENTER PANEL INSTALLED

(2) 0.50 IN. SINGLE KNOCKOUTS & (1) 1.0/1.25 IN. (2) 1.25/1.5/2.0/2.5 IN. COMBINATION KNOCKOUTS

DISCONTINUED PRODUCT

C	224246	DAJ	JPB	8/31/09
SEE ECH				
B	222823	JPB	JPB	04/17/09
SEE ECH				
A	222502	JPB	JPB	04/08/09
SEE ECH				
-	221894	JPB	JPB	02/23/09
ISSUE				

PROJECT NAME:		INSTALLATION	
OUTLINE & D185PQ SERIES, 125A, 240/120VAC, TYPE 1		20 SPACE LOAD CENTER	
BY	DATE	MANUFACTURING TOLERANCES TO BE IN ACCORDANCE WITH ASCO PROCEDURE MP-1-003. FOR PLASTIC PARTS SEE MP-1-005	ASSEMB. REF. NO.
DRAWN BY	JPB	02/23/09	
CHECKED			
PROJECT APPROVAL			
FINAL APPROVAL	JPB	02/23/09	
PROPERTY OF ASCO POWER TECHNOLOGIES. USE PERMITTED FOR OUR WORK ONLY. ALL RIGHTS OF DESIGN OR INVENTION ARE RESERVED.		COMPUTER GENERATED DRAWING	
SCALE: 2:1		SIZE: DS	
DWC NO. 864418		DRAWING C ECH NO. 224246	
ASCO POWER TECHNOLOGIES, LP. FLORHAM PARK, NEW JERSEY 07932 U.S.A.		SHEET 1 OF 1	