

ASCO 185 SERIES AUTOMATIC POWER TRANSFER SWITCHES RATED 260 & 400 AMPERES, 240V SINGLE PHASE, 3 WIRE

NOTES:

- Automatic Power Transfer Switch: ASCO E185, 2 pole, 260 & 400 amperes, 240 vac. Listed to UL 1008, Standard for Transfer Switching Equipment. For use on Optional Standby Systems as defined by NFPA 70 (National Electrical Code (NEC), Article 702.
- Transfer Controller - Group 4 Automatic Transfer Switch Controller including: (Refer to 185 Series Operator's Manual, PN 381333-319, supplied with the transfer switch for detailed information)
- User Controls & Status Indication**
 - Load on Preferred Source (Utility) LED indicator - green
 - Load on Alternate Source (Generator) LED indicator - red
 - Preferred Source (Utility) Acceptable LED indicator - green
 - Alternate Source (Generator) Acceptable LED indicator - red
 - Automatic Engine-Generator Exerciser (Setting & Engine Running) LED indicator
 - Transfer Test membrane pushbutton
 - Bypass Time Delay (active time delay or engine-generator exercise period) membrane pushbutton
 - Set Engine Exerciser membrane pushbutton

Time Delays

- Override Momentary Preferred Source (Utility) Outages - Factory set at 3 seconds
- Transfer to Alternate Source (Generator) - Factory set at 10 seconds
- Override Momentary Alternate Source (Generator) Outages - Factory set at 4 seconds
- Retransfer to Preferred Source (Utility) - 5 minutes/fix
- Engine-Generator Unloaded Running (Cooldown) Period - Factory set at 5 minutes

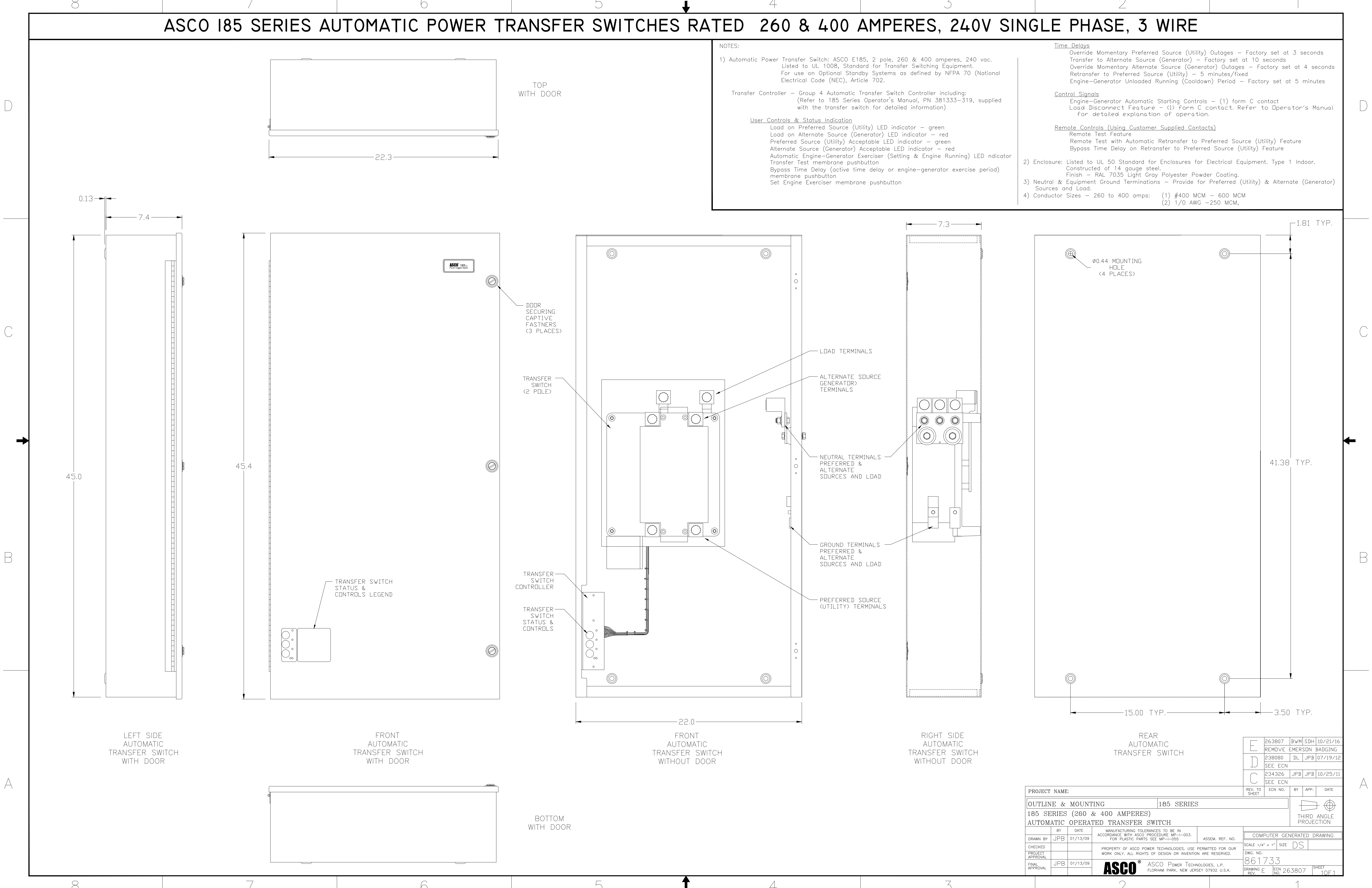
Control Signals

- Engine-Generator Automatic Starting Controls - (1) form C contact
- Load Disconnect Feature - (1) Form C contact. Refer to Operator's Manual For detailed explanation of operation.

Remote Controls (Using Customer Supplied Contacts)

- Remote Test Feature
- Remote Test with Automatic Retransfer to Preferred Source (Utility) Feature
- Bypass Time Delay on Retransfer to Preferred Source (Utility) Feature

- Enclosure: Listed to UL 50 Standard for Enclosures for Electrical Equipment, Type 1 Indoor. Constructed of 14 gauge steel. Finish - RAL 7035 Light Gray Polyester Powder Coating.
- Neutral & Equipment Ground Terminations - Provide for Preferred (Utility) & Alternate (Generator) Sources and Load.
- Conductor Sizes - 260 to 400 amps: (1) #400 MCM - 600 MCM (2) 1/0 AWG -250 MCM.



E	263807	BWM	SDH	10/21/16
D	238080	DL	JPB	07/19/12
C	234326	JPB	JPB	10/25/11

PROJECT NAME:		REV. TO SHEET	ECN NO.	BY	APP.	DATE
OUTLINE & MOUNTING		185 SERIES				
185 SERIES (260 & 400 AMPERES) AUTOMATIC OPERATED TRANSFER SWITCH						
BY	DATE	MANUFACTURING TOLERANCES TO BE IN ACCORDANCE WITH ASCO PROCEDURE MP-1-003. FOR PLASTIC PARTS SEE MP-1-005		ASSEM. REF. NO.	COMPUTER GENERATED DRAWING	
DRAWN BY	JPB	01/13/09			SCALE	1/4" = 1" SIZE DS
CHECKED			PROPERTY OF ASCO POWER TECHNOLOGIES. USE PERMITTED FOR OUR WORK ONLY. ALL RIGHTS OF DESIGN OR INVENTION ARE RESERVED.		DWG. NO.	861733
PROJECT APPROVAL					DRAWING E	ECN NO. 263807
FINAL APPROVAL	JPB	01/13/09	ASCO® ASCO POWER TECHNOLOGIES, L.P. FLORHAM PARK, NEW JERSEY 07932 U.S.A.		SHEET	1 OF 1