

### GENERAL NOTES

- TYPE 1 ENCLOSURE. FREE STANDING. FLOOR MOUNTED. CODE GAUGE STEEL.
- ALL DOORS HAVE LOCKABLE HANDLES WITH COMMON KEYING AND CAPTIVE SCREWS AS REQUIRED.
- FINISH: ANSI 61 GRAY POLYESTER SEMI GLOSS ELECTROSTATIC POWDER.
- RECOMMENDED CLEARANCES:  
FRONT: 38 INCHES, REAR: NONE
- ALL BUS IS SILVER-PLATED COPPER, BASED ON 1000A PER SQ. IN. DENSITY.
- A FULL RATED NEUTRAL CONNECTION FOR EACH SOURCE AND THE LOAD IS OPTIONAL. WHEN PROVIDED IT IS IN ONE OF THE FOLLOWING FORMATS AS SPECIFIED BY THE CATALOG NO.  
A. SOLID (COPPER BUS) NEUTRAL (SHOWN) (PROVIDED STANDARD ON H3AUS)  
B. SWITCHED NEUTRAL POLE
- DESIGNED FOR FRONT ACCESS
- FOR SPECIFIED TRANSFER SWITCH, REFER TO OPERATOR'S MANUAL PROVIDED WITH UNIT.
- SECTION 1 & SECTION 2 SHIP AS 1 UNIT (NO SHIPPING SPLIT).

### SPECIFICATIONS

- SERVICE VOLTAGE:  
SYSTEM RATING: 150 AMPS, 175 AMPS, 200 AMPS, 225 AMPS, 250 AMPS, 300 AMPS, 350 AMPS, 400 AMPS, 3Ø, 4W OR 1Ø, 3W.  
GROUND BUS- 20% RATED BUS IS PROVIDED.  
SHORT CIRCUIT RATING- 35,000 RMS SYM AMPERES @ 480V (LOWEST RATED DEVICE)  
SHORT CIRCUIT RATING- 65,000 RMS SYM AMPERES @ 240V (LOWEST RATED DEVICE)  
THE EMERGENCY SOURCE INPUT MUST BE PROTECTED BY A REMOTE OVERCURRENT PROTECTION DEVICE AS LISTED ON THE MARKINGS ON THE TRANSFER SWITCH.
- NEUTRAL BUS: 150 AMPS, 260 AMPS, 400 AMPS
- APPLICABLE LABELS: U.L. 891- SUITABLE ONLY FOR USE AS SERVICE EQUIPMENT.

### CABLING NOTES

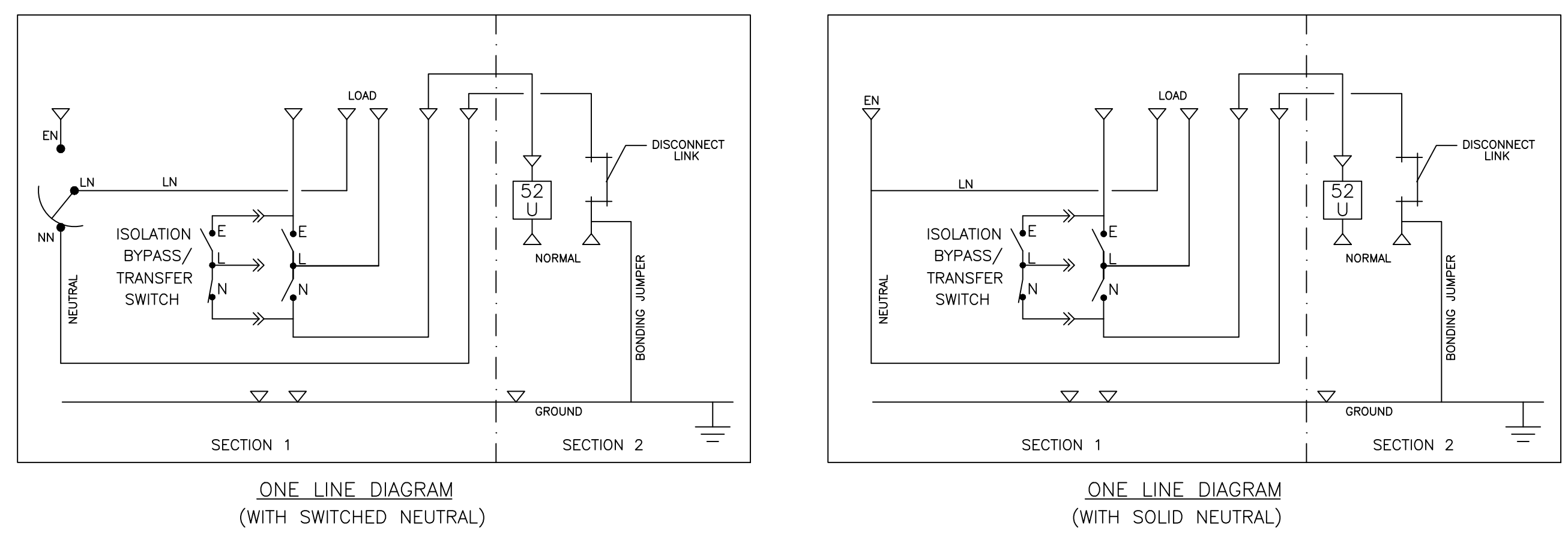
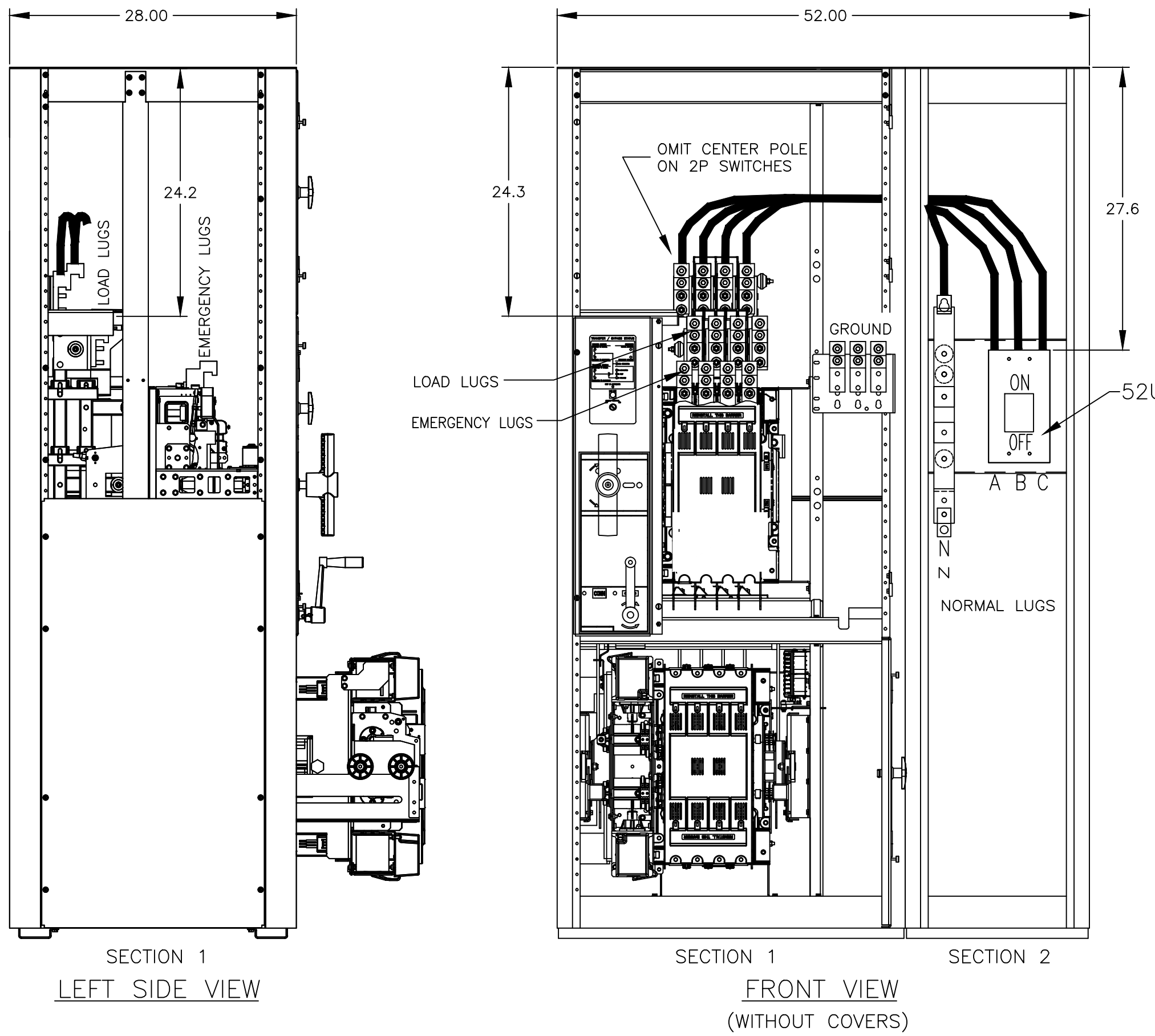
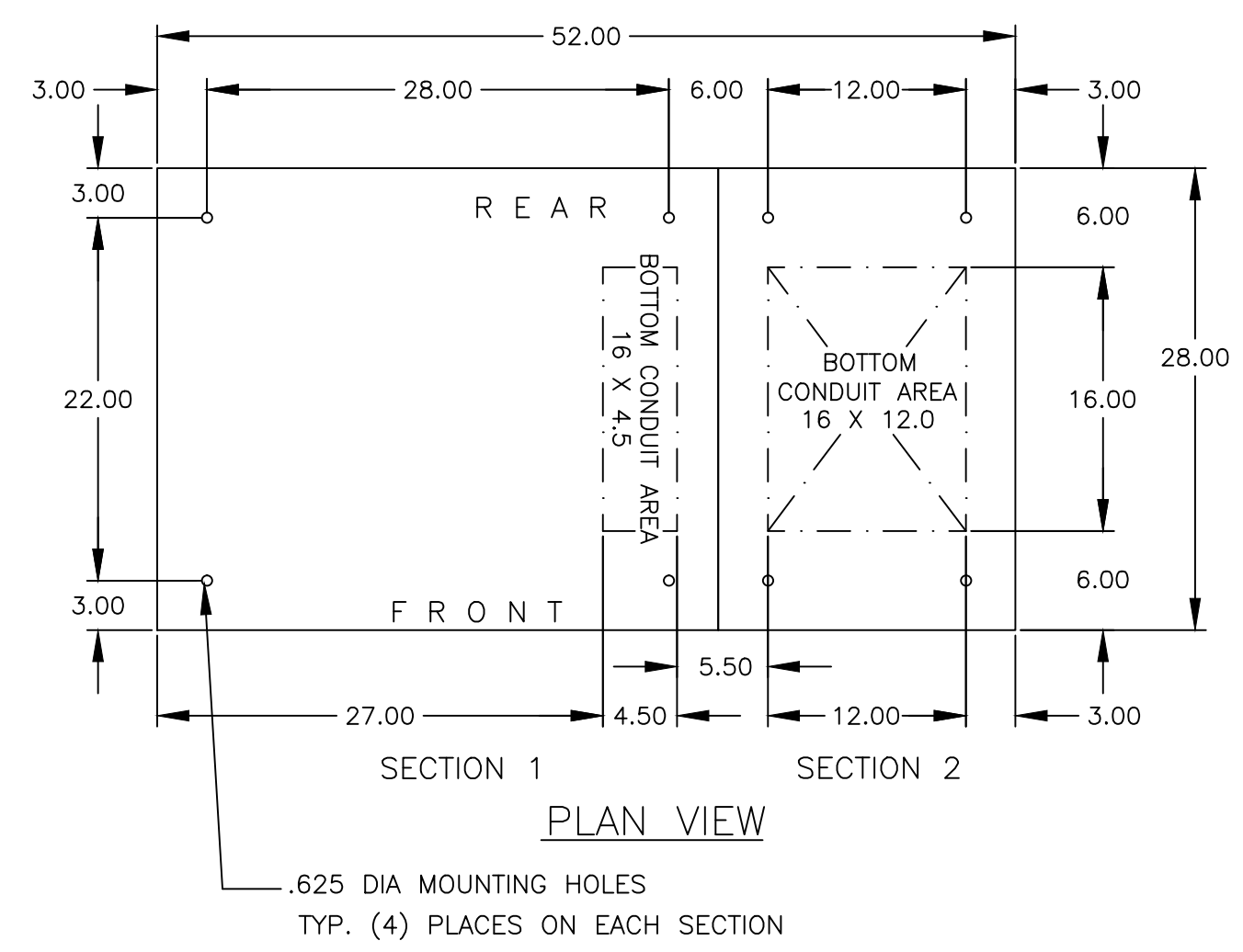
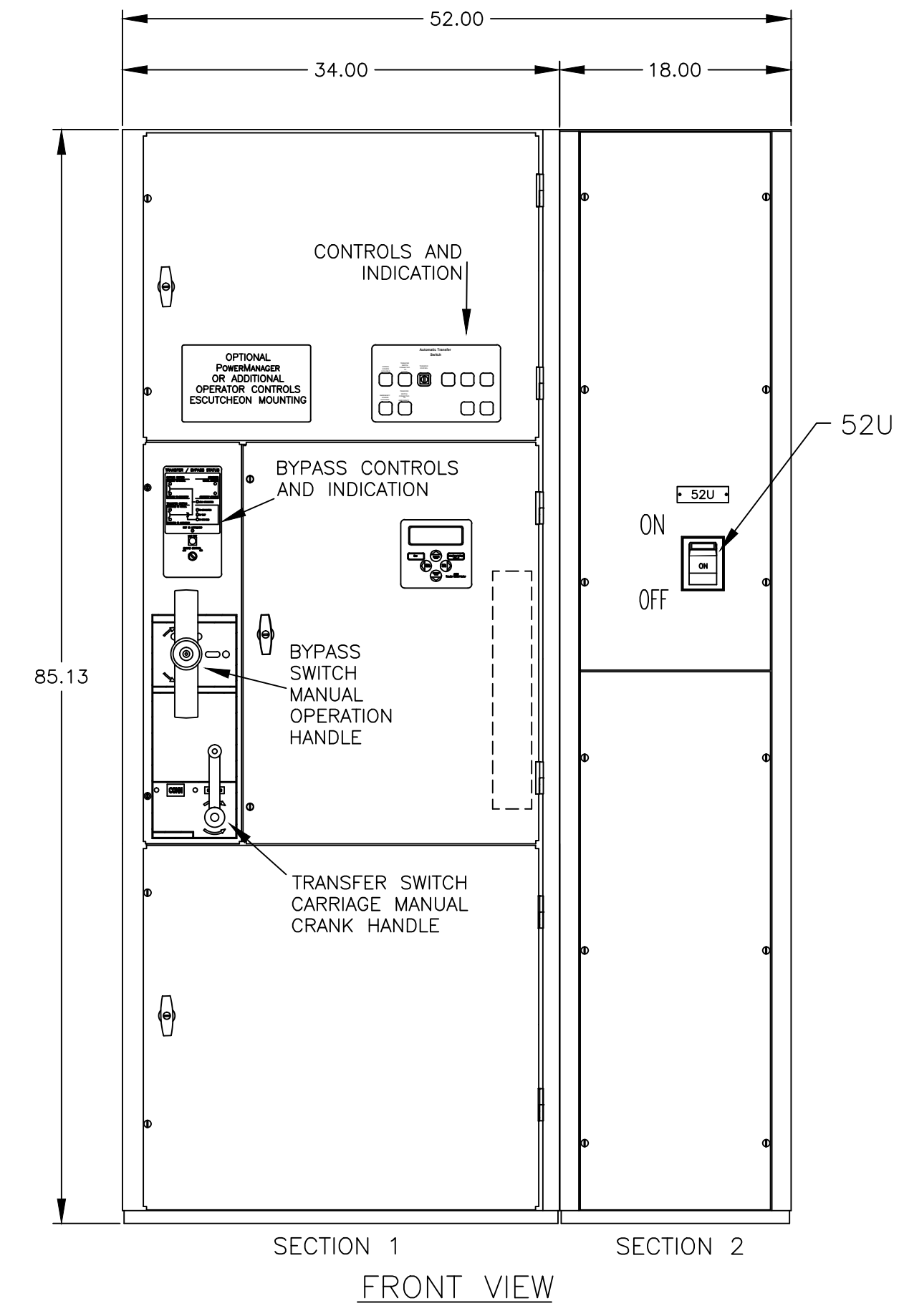
- ALL SIZES SUPPLIED STANDARD WITH MECHANICAL (SCREW TYPE) LUGS. (SEE AMP SIZE BELOW)  
A. LUG MATERIAL: ALUMINUM ALLOY 6061-T6 WITH ELECTRO TIN PLATED FINISH.  
B. SCREW MATERIAL: ALUMINUM ALLOY 6262-T9 WITH ELECTRO TIN PLATED FINISH.  
C. UL LISTED, CSA CERTIFIED.  
D. LUG SCREW TIGHTENING TORQUE PER UL 486B: 19 FT-LBS.  
E. SUITABLE WIRE BENDING SPACE IS PROVIDED AS PER NEC.
- OPTIONAL COPPER CRIMP LUGS MAY BE SUPPLIED. (SEE AMP SIZE BELOW)  
A. LUG MATERIAL: HIGH CONDUCTIVITY WROUGHT COPPER FINISH, ELECTRO TIN PLATED.  
B. UL LISTED, CSA CERTIFIED.  
C. LUG MOUNTING HARDWARE TIGHTENING TORQUE: (REFER TO WITHSTAND CURRENT RATING LABEL PROVIDED ON EACH TRANSFER SWITCH).  
D. SUITABLE WIRE BENDING SPACE IS PROVIDED AS PER NEC.
- CONSULT FACTORY FOR OTHER TERMINATION REQUIREMENTS.

### NOTES 150A - 400A

- SUPPLIED WITH STANDARD MECHANICAL (SCREW TYPE) LUGS ON THE EMERGENCY & LOAD. ONE (1) LUG PER PHASE AND NEUTRAL EACH SUITABLE FOR CONNECTION OF (1) #4-600MCM OR (2) 1/0 - 250MCM CU/AL CABLE
- SUPPLIED WITH STANDARD MECHANICAL (SCREW TYPE) LUGS ON THE NORMAL. ONE (1) LUG PER PHASE AND NEUTRAL EACH SUITABLE FOR CONNECTION OF (1) #1-600MCM OR (2) #1-250MCM CU/AL CABLE  
A. SUITABLE WIRE BENDING SPACE IS PROVIDED AS PER NEC.
- GROUND LUGS ARE PROVIDED STANDARD AS BELLOWS :-  
THREE (3) LUGS, EACH SUITABLE FOR CONNECTION OF TWO (2) 1/0 AWG-250 MCM CU/AL CABLE OR ONE (1) #4-600MCM CU/AL CABLE.

### CIRCUIT BREAKER: ITEM 52U

SQUARE "D" 80% RATED TYPE "LHL", 400AF/150AT, 400AF/175AT, 400AF/200AT, 400AF/225AT, 400AF/250AT, 400AF/300AT, 400AF/350AT, 400AF/400AT, MOLDED CASE CIRCUIT BREAKER, THERMAL MAGNETIC, TRIP SETTINGS.



PROJECT NAME:		A 248110 SG RN	
OUTLINE		MOUNTING	
JAUB 150A-400A, LHL SERVICE ENTRANCE BREAKER			
TYPE 1, 85 X 52 X 28 FRONT CONNECTED, 2 SECTIONS.			
DRAWN BY	MCH	DATE	12-30-10
CHECKED	RN	ASSEM. REF. NO.	
PROJECT APPROVAL		MANUFACTURING TOLERANCES TO BE IN ACCORDANCE WITH ASCO PROCEDURE MP-1-003. FOR PLASTIC PARTS SEE MP-1-005.	COMPUTER GENERATED DRAWING
FINAL APPROVAL		PROPERTY OF ASCO POWER TECHNOLOGIES. USE PERMITTED FOR OUR WORK ONLY. ALL RIGHTS OF DESIGN OR INVENTION ARE RESERVED.	SCALE 3/32" = 1" SIZE DS
DRAWING A		843062-026	
REV. A		ECON 248110	
REV. 1		SHEET 10F 1	