

# OUTLINE & MOUNTING FOR ASCO® 7000 SERIES AUTOMATIC TRANSFER SWITCH & BYPASS-ISOLATION SWITCHES TYPES 7ATB, 7ACTB & 7ADTB RATED 2600-3000 AMPERES

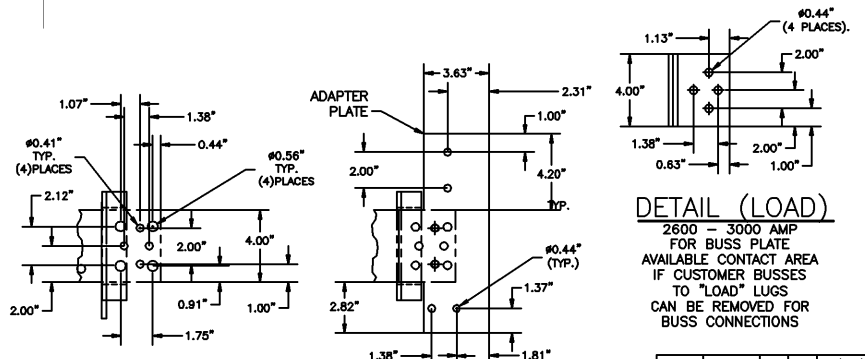
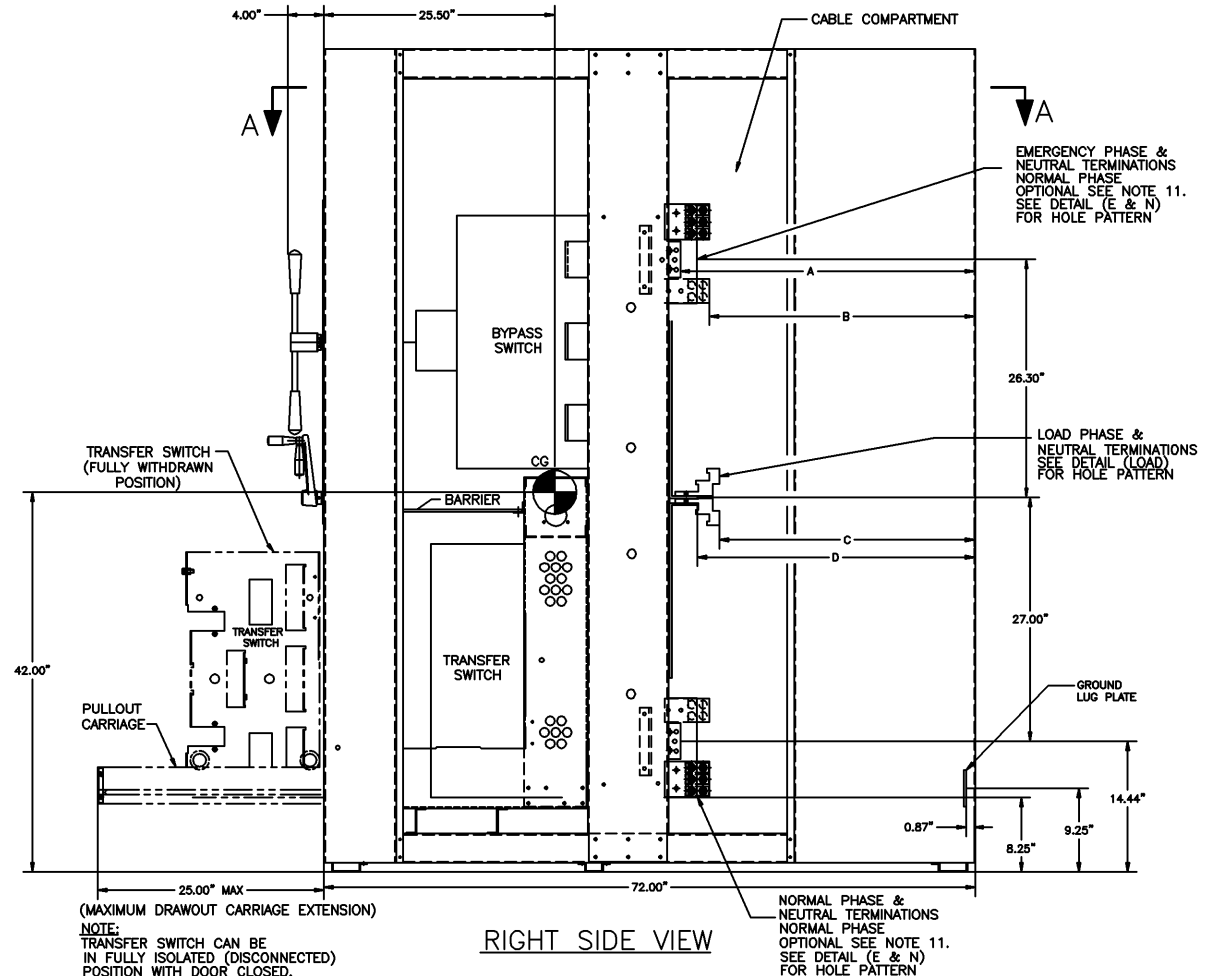
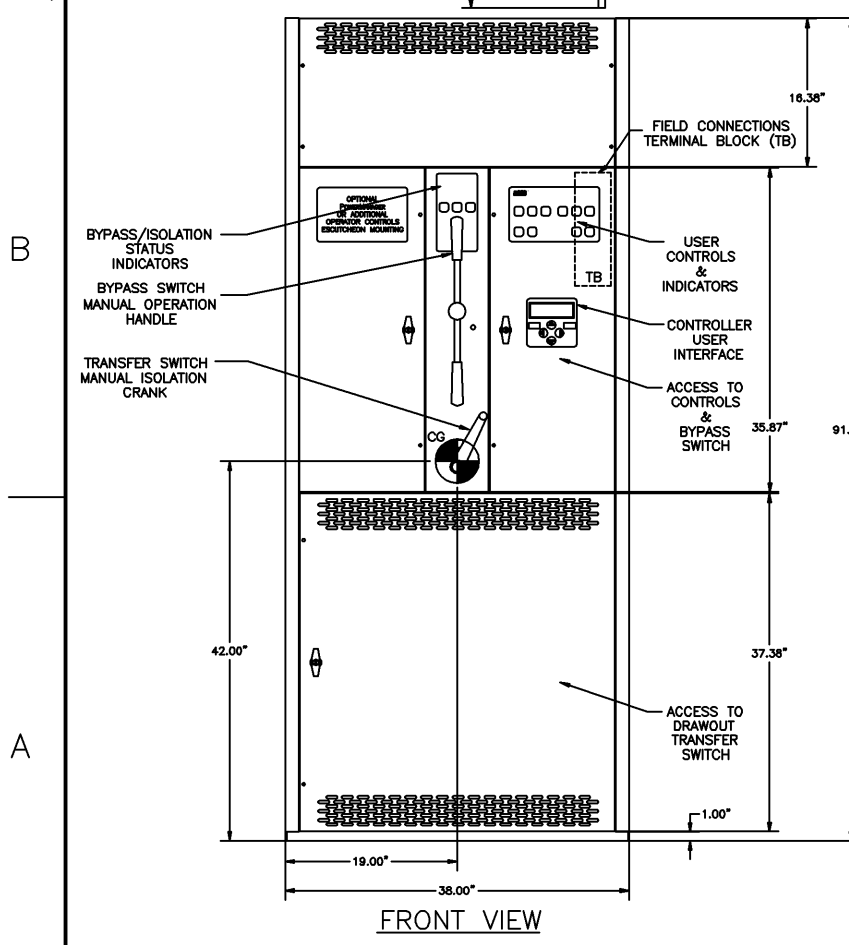
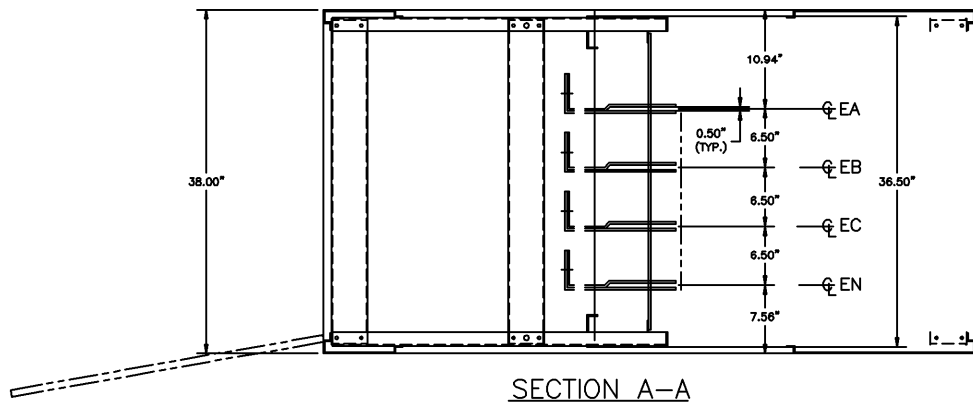
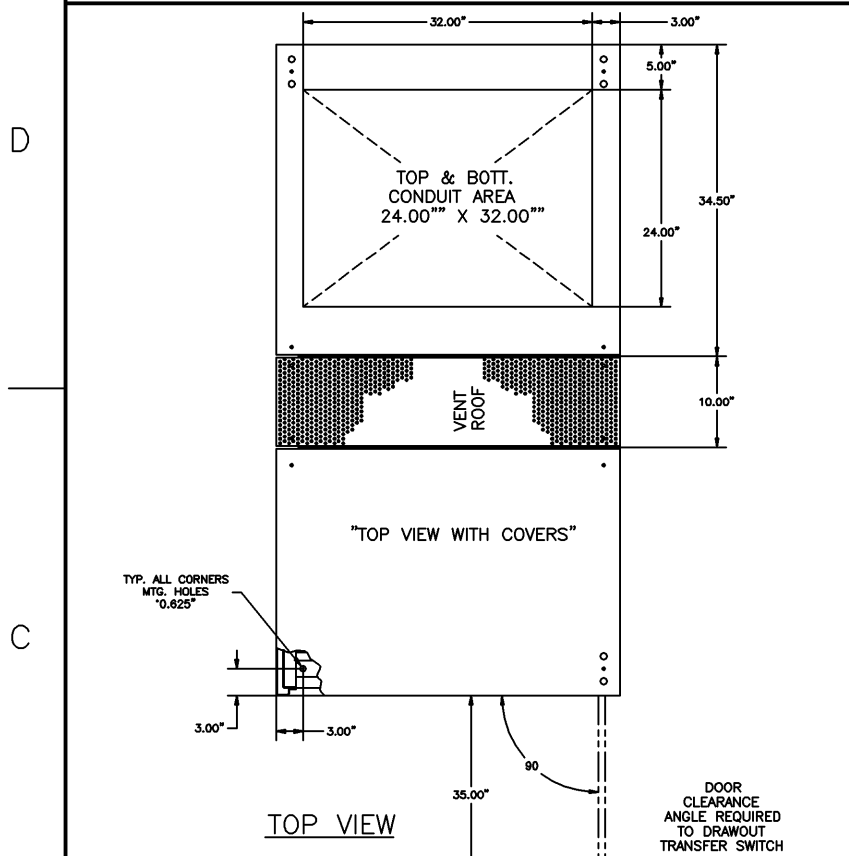
BUS/LUG DISTANCE TO INSIDE OF BACK PANEL		
	DIM.	2600/3000 A
EMER & NORM BUS TO INSIDE OF BACK PANEL	"A"	32.80"
EMER & NORM LUG TO INSIDE OF BACK PANEL	"B"	29.50"
LOAD LUG TO INSIDE OF BACK PANEL	"C"	28.25"
LOAD BUS TO INSIDE OF BACK PANEL	"D"	30.75"

## GENERAL NOTES

- TYPE 1 ENCLOSURE. FREE STANDING. FLOOR MOUNTED. CODE GAUGE STEEL.
- NEC STANDARD GAUGE PAN TYPE DOORS WITH LOCKABLE HANDLES AND REMOVABLE COVERS.
- FINISH: ANSI 61 GRAY, POLYESTER POWDER.
- CONSTRUCTION IS IN ACCORDANCE WITH APPLICABLE REQUIREMENTS OF UL 1008.
- PADLOCKING PROVISIONS ARE INCLUDED: ISOLATION CRANK; THE TRANSFER SWITCH ISOLATION CRANK MAY BE PADLOCKED WITH THE TRANSFER SWITCH IN THE FULLY ISOLATED (DISCONNECTED POSITION).
- UNIT CAN BE ADAPTED FOR CONNECTION OF BUS DUCT FLANGES. (CONSULT FACTORY)
- RECOMMENDED CLEARANCES:  
FRONT: 48.00" INCHES  
REAR: 38.00" INCHES
- A 20% RATED GROUND BUS IS PROVIDED AT THE BOTTOM REAR OF THE CABLE COMPARTMENT.
- A FULL RATED NEUTRAL CONNECTION FOR EACH SOURCE AND THE LOAD IS OPTIONAL, WHEN PROVIDED IT IS IN ONE OF THE FOLLOWING FORMATS AS SPECIFIED BY THE CATALOG NO. NEUTRAL TYPE:  
A: SOLID NEUTRAL BUS  
B: SWITCHED NEUTRAL POLE  
C: OVERLAPPING NEUTRAL POLE (NOT AVAILABLE ON 7ADTB UNITS)
- CENTER OF GRAVITY
- THE STANDARD SWITCH CONFIGURATION IS FOR TOP EMERGENCY, CENTER LOAD, AND BOTTOM NORMAL. OPTIONALLY, THE SWITCH MAY BE SUPPLIED WITH REVERSE SOURCES. (REFER TO THE WIRING DIAGRAM FURNISHED WITH EACH TRANSFER SWITCH TO DETERMINE TERMINATION POSITIONS).

## CABLING NOTES

- ALL SIZES SUPPLIED STANDARD WITH MECHANICAL (SCREW TYPE) LUGS ON THE NORMAL, EMERGENCY & LOAD SUITABLE FOR CONNECTION OF TEN (10) 1/0-750 MCM CU/AL CABLES.  
SUITABLE WIRE BENDING SPACE IS PROVIDED FOR UP TO TEN (10) 600 MCM CABLES PER TERMINAL PER NFPA 70.
- OPTIONAL COPPER CRIMP LUGS MAY BE SUPPLIED. UP TO EIGHT (8) TWO HOLE, LONG BARREL CU CRIMP LUGS RATED FOR UP TO 600 MCM. (REFER TO CRIMP LUG INSTALLATION DATA PROVIDED WITH UNIT FOR FULL INSTALLATION DETAILS).  
SUITABLE WIRE BENDING SPACE IS PROVIDED FOR UP TO EIGHT (8) 600 MCM CABLES PER TERMINAL PER NFPA 70.
- GROUND LUGS ARE PROVIDED STANDARD AS FOLLOWS:  
(36) 1/0-750 MCM CU/AL CABLES.
- CONSULT FACTORY FOR OTHER TERMINATION REQUIREMENTS.



233665	WK	BK	09/09/11
223713	[EWN]	[SDH]	7/15/09
UPDATE NOTES			
220448	TR	WK	10/24/08
213366	TR	WK	5/11/07
204234	AJM	WK	04/26/05
201947	KH	WK	10/04/04
201243	TR	WK	07/30/04
159212	WK	WK	10/29/01
ISSUE			

PROJECT NAME:		REV. TO SHEET	EDN NO.	BY	APP.	DATE
OUTLINE & MOUNTING						
7000 SERIES TRANSFER SWITCH AND BYPASS/ISOLATION		MANUFACTURING TOLERANCES TO BE IN ACCORDANCE WITH ASCO PROCEDURE MP-1-003. FOR PLASTIC PARTS SEE MP-1-005		ASSEMB. REF. NO.		
DRAWN BY	DJB	DATE	10/29/01	COMPUTER GENERATED DRAWING		
CHECKED	MM	DATE	10/29/01	SCALE	1:1	SIZE DS
TRIGGER APPROVAL	WK	DATE	10/29/01	DRAWING NO. 727400		
FINAL APPROVAL		DATE		DRAWING G EDN NO. 233665 SHEET 1 OF 1		

PROPERTY OF ASCO POWER TECHNOLOGIES. USE PERMITTED FOR OUR WORK ONLY. ALL RIGHTS OF DESIGN OR INVENTION ARE RESERVED.  
ASCO® ASCO POWER TECHNOLOGIES, LP. FLORHAM PARK, NEW JERSEY 07932 U.S.A.