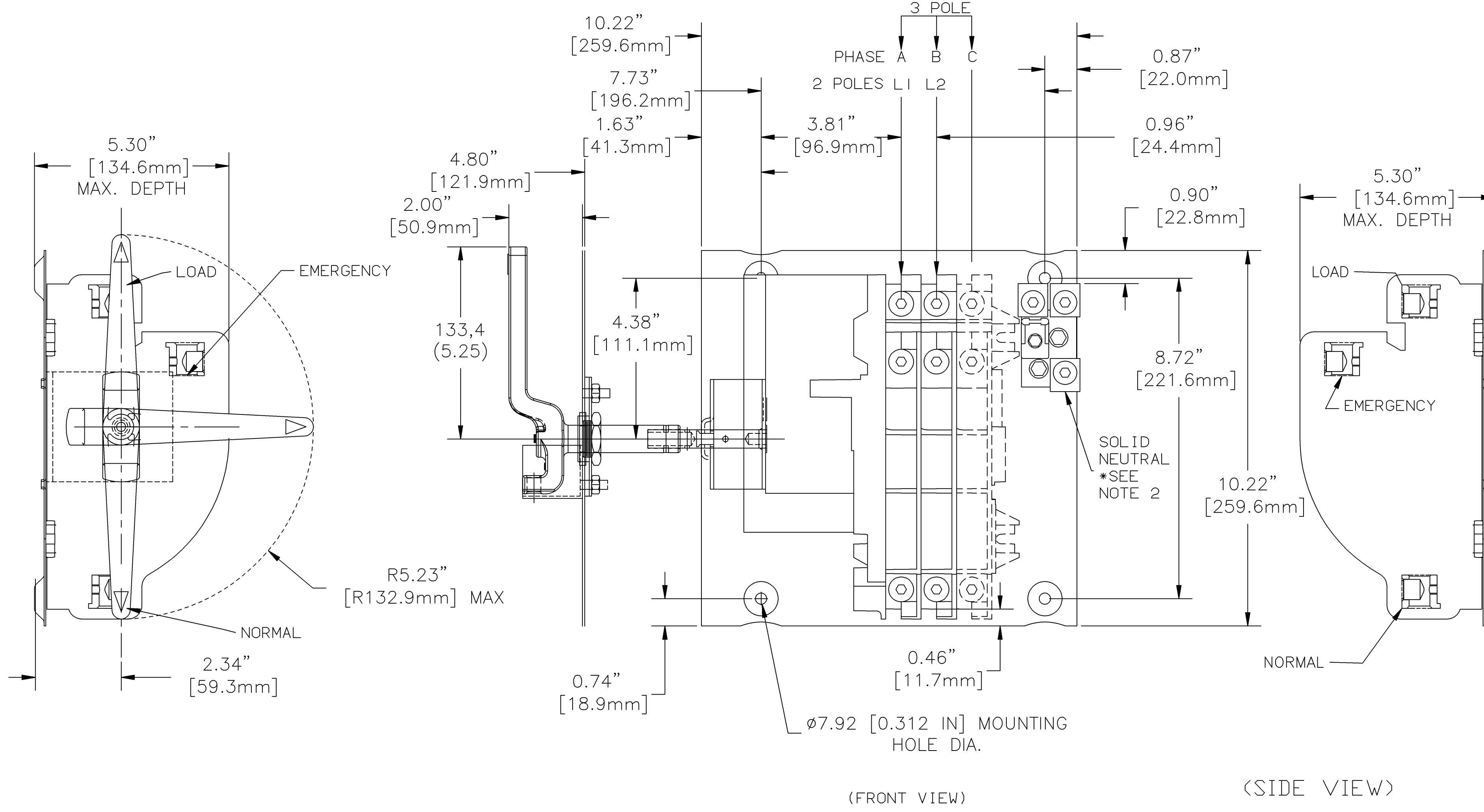


OUTLINE FOR ASCO® 7000 SERIES 30-230 AMPERE "D" FRAME TRANSFER SWITCHES OPEN TYPE

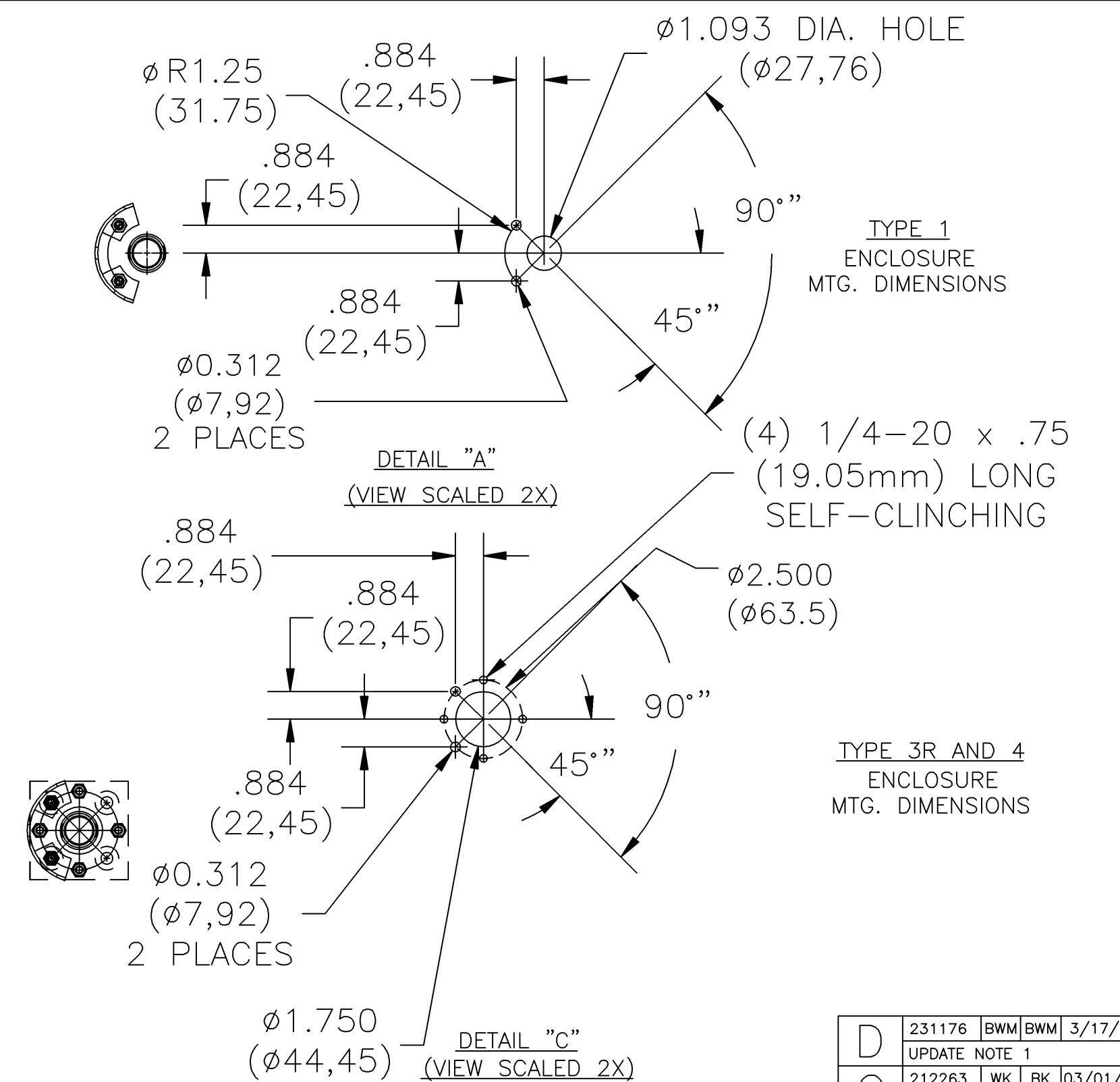
GENERAL NOTES

SERIES	CATALOG PREFIX
7000	7ATS 7MTS

1. THE STANDARD SWITCH CONFIGURATION IS FOR TOP EMERGENCY & LOAD AND BOTTOM NORMAL. OPTIONALLY, THE TRANSFER SWITCH MAY BE SUPPLIED WITH REVERSE SOURCES. (REFER TO THE WIRING DIAGRAM FURNISHED WITH EACH TRANSFER SWITCH TO DETERMINE POSITIONS).
2. NEUTRAL CONFIGURATIONS:
AN OPTIONAL FULL RATED NEUTRAL CONFIGURATION FOR EACH SOURCE AND THE LOAD MAY BE PROVIDED. WHEN EQUIPPED IT IS IN ONE OF THE FOLLOWING FORMATS AS SPECIFIED BY THE CATALOG NUMBER NO. NEUTRAL TYPE:
(A) SOLID (COPPER BUS) NEUTRAL
(B) SWITCHED NEUTRAL POLE
(C) OVERLAPPING NEUTRAL POLE
3. THE STANDARD MECHANICAL (SCREW TYPE) AL/CU TERMINAL LUGS ARE SHOWN FOR REFERENCE.
4. WHEN INSTALLING CONDUCTORS, CONNECT TO SIMILARLY MARKED PHASES OF NORMAL, EMERGENCY & LOAD.
5. ALL INTERNAL CONNECTIONS ARE MADE AT FACTORY.
6. MAINTAIN ELECTRICAL CLEARANCE OF 0.5 in. (12.7 mm) BETWEEN LIVE METAL PARTS AND GROUNDED METAL.
7. WHEN MOUNTING THE TRANSFER SWITCH IN AN ENCLOSURE, MOUNT THE TRANSFER SWITCH UNIT ON THE INSIDE BACK SURFACE OF THE ENCLOSURE. THE CONTROL(S) PANEL AND OPERATOR CONTROLS SHOULD BE MOUNTED ON THE INSIDE, REAR SURFACE OF THE DOOR. A MINIMUM DEPTH OF 6.00 in (152.4mm) IS REQUIRED BETWEEN THE TRANSFER SWITCH AND THE CONTROLS WHEN THE DOOR IS CLOSED.
8. FOR TYPE 1 ENCLOSURE SEE DETAIL A-1 AND DETAIL B-1 FOR CUTOUT DATA. FOR TYPE 3R, 4, & 12 ENCLOSURE SEE DETAIL A-2 AND DETAIL B-2 FOR CUTOUT DATA. GASKETS ARE PROVIDED FOR TYPE 3R, 4, & 12 ENCLOSURES. A BEZEL FOR THE CONTROL PANEL IS ALSO PROVIDED FOR TYPE 3R, 4, & 12 ENCLOSURES.
9. THE CONTROL PANEL(S) IS CONNECTED TO THE TRANSFER SWITCH BY A HARNESS WITH A QUICK DISCONNECT PLUG(S). THE HARNESS EXITS THE TRANSFER SWITCH ON THE RIGHT SIDE. CONSULT FACTORY FOR EXTENSION HARNESSES.
10. AN OPERATOR'S MANUAL IS FURNISHED WITH EACH AUTOMATIC TRANSFER SWITCH. REFER TO THIS PUBLICATION PRIOR TO INSTALLATION AND OPERATION OF THE SWITCH.
11. WHEN OPTIONAL OVERLAPPING NEUTRAL IS SUPPLIED THE CONTACTS ON THE OVERLAPPING NEUTRAL ARE REVERSED, NORMAL ON TOP, EMERGENCY AT BOTTOM.



MANUAL OPERATOR AND PADLOCK COLLAR DRILL AND MOUNTING DIMENSIONS



MINIMUM REQUIRED ENCLOSURE SIZE IN(mm)

SWITCH RATING (AMPS)	HEIGHT	WIDTH	DEPTH
30-200 AMPS	31.00 (787,4)	17.50 (444,5)	11.63 (295,4)
230 AMPS	48.00 (1219,2)	18.00 (457,2)	13.00 (330,2)

APPROXIMATE SHIPPING WEIGHT, LBS (KG)
(WEIGHT INCLUDES STANDARD TRANSFER SWITCH & CONTROLS)

AMP SIZE	POLES	WEIGHT
30-230	2	17 (8)
	3	20 (9)
	3 W/OVERLAPPING NEUT.	23 (11)

SUGGESTED BOLT SIZE FOR MOUNTING A.T.S.:
1/4-20 X 1 INCH LONG MINIMUM QUANTITY (4)

SWITCH RATING (AMPS)	RANGE OF WIRE
30-150	(1) #14 TO 4/0 AWG AL-CU WIRE
200-230	(1) #14 TO 4/0 AWG COPPER WIRE

PROJECT NAME: OPEN TYPE		REV. TO SHEET	ECN NO.	BY	APP.	DATE
OUTLINE		7000 SERIES 3PH 30-230 AMPS		THIRD ANGLE PROJECTION		
BY	DATE	MANUFACTURING TOLERANCES TO BE IN ACCORDANCE WITH ASCO PROCEDURE MP-1-003. FOR PLASTIC PARTS SEE MP-1-055		ASSEM. REF. NO.	COMPUTER GENERATED DRAWING	
CHECKED	BWM	12/24/02	PROPERTY OF ASCO POWER TECHNOLOGIES. USE PERMITTED FOR OUR WORK ONLY. ALL RIGHTS OF DESIGN OR INVENTION ARE RESERVED.		SCALE	SIZE DS
PROJECT APPROVAL	WK	12/24/02			DWG. NO.	719687-007
FINAL APPROVAL					DRAWING D	ECN NO. 231176
					REV.	10F2



