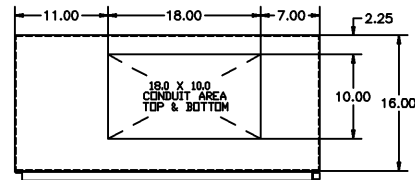
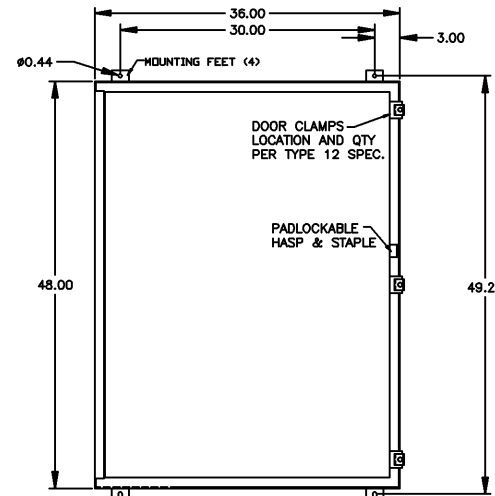


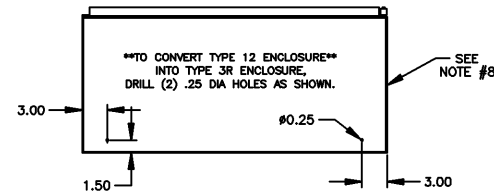
OUTLINE & MOUNTING FOR **ASCO** 7000 SERIES MANUAL TRANSFER SWITCHES, TYPE 7ATS/7MTS RATED 260 & 400 AMPERES, ENCLOSURE TYPES 3R/12



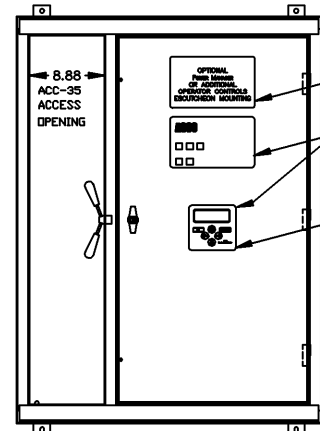
TOP VIEW



FRONT VIEW

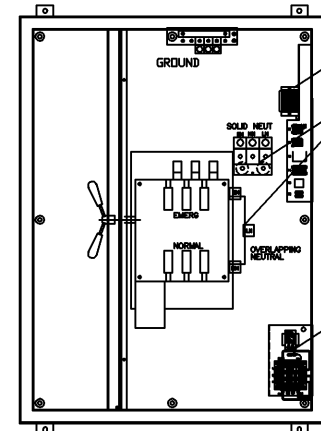


BOTTOM VIEW \*\*TYPE 3R ONLY\*\*



INNER DOOR FRONT VIEW & ACCESS TO ACC-35

BLANK FOR 7MTS SWITCHES (FUTURE USE)  
USER CONTROLS AND INDICATIONS



FRONT VIEW WITHOUT INNER DOOR

TB ASSEMBLY  
SOLID/OVERLAPPING NEUTRAL SHOWN FOR REFERENCE ONLY  
OPTIONAL HEATER

GENERAL NOTES

- UL 508, TYPE 3R/12 WALL MOUNTED ENCLOSURE, CODED GAGE STEEL, SEAM WELDED CONSTRUCTION, FOR PADLOCKING.
- DOOR HINGED ON LEFT SIDE. DOOR CLAMPS ON ONE SIDE, SEAL GASKETED DOOR. HASP AND STAPLE FOR PADLOCKING.
- FINISH: ANSI 61 GRAY POLYESTER SEMI GLOSS ELECTROSTATIC POWDER.
- RECOMMENDED CLEARANCES:  
FRONT: 36 INCHES
- ALL BUS IS SILVER-PLATED COPPER, BASED ON 1000A PER SQ. IN. DENSITY.
- A FULL RATED NEUTRAL CONNECTION FOR EACH SOURCE AND THE LOAD IS OPTIONAL. WHEN PROVIDED IT IS IN ONE OF THE FOLLOWING FORMATS AS SPECIFIED BY THE CATALOG NO. NEUTRAL TYPE:  
A. SOLID (COPPER BUS) NEUTRAL  
B. SWITCHED NEUTRAL POLE (1Ø, 3W ONLY)  
C. OVERLAPPING NEUTRAL POLE
- DESIGNED FOR FRONT ACCESS ONLY.
- TO CONVERT FROM TYPE 12 ENCLOSURE INTO TYPE 3R ENCLOSURE, DRILL (2) .25 DIA HOLES AS SHOWN.
- FOR SPECIFIED TRANSFER SWITCH, REFER TO OPERATOR'S MANUAL PROVIDED WITH UNIT.

CABLING NOTES

- ALL SIZES SUPPLIED STANDARD WITH MECHANICAL (SCREW TYPE) LUGS. (SEE AMP SIZE BELOW)  
A. LUG MATERIAL: ALUMINUM ALLOY 6061-T6 WITH ELECTRO TIN PLATED FINISH.  
B. SCREW MATERIAL: ALUMINUM ALLOY 6262-T9 WITH ELECTRO TIN PLATED FINISH.  
C. UL LISTED, CSA CERTIFIED.  
D. LUG SCREW TIGHTENING TORQUE PER UL 486B: 19 FT-LBS.  
E. SUITABLE WIRE BENDING SPACE IS PROVIDED. (SEE AMP SIZE BELOW)
- OPTIONAL COPPER CRIMP LUGS MAY BE SUPPLIED. (SEE AMP SIZE BELOW)  
A. LUG MATERIAL: HIGH CONDUCTIVITY WROUGHT COPPER FINISH, ELECTRO TIN PLATED.  
B. UL LISTED, CSA CERTIFIED.  
C. LUG MOUNTING HARDWARE TIGHTENING TORQUE: (REFER TO WITHSTAND CURRENT RATING LABEL PROVIDED ON EACH TRANSFER SWITCH).  
D. SUITABLE WIRE BENDING SPACE IS PROVIDED. (SEE AMP SIZE BELOW)
- CONSULT FACTORY FOR OTHER TERMINATION REQUIREMENTS.

NOTES 260-400 AMPS

- SUPPLIED WITH STANDARD MECHANICAL (SCREW TYPE) LUGS ON THE NORMAL, EMERGENCY & LOAD BUS STABS. ONE (1) LUG PER PHASE AND NEUTRAL EACH SUITABLE FOR CONNECTION OF (1) #4 AWG TO 600MCM OR (2) 1/0 AWG TO 250MCM CU/AL CABLE (SEE NOTE "A" BELOW).  
A. SUITABLE WIRE BENDING SPACE IS PROVIDED FOR UP TO TWO (2) 250MCM CABLE PER TERMINAL
- GROUND LUGS ARE PROVIDED STANDARD AS FOLLOWS;  
(3) #6 AWG- 250 MCM CU/AL CABLE

B	233622	WK	BK	9/6/11
	SEE ECN			
A	233604	TR	WK	9/3/11
	SEE ECN			
	231867	LY		5/4/11
	ISSUE			

PROJECT NAME:		REV. TO SHEET	ECN NO.	BY	APP.	DATE
OUTLINE MOUNTING						
E7ATS/7MTS 260-400A SOLID/SWITCH NEUTRAL ACC-35						
TYPE 12/3R 48 X 36 X 16						
BY	DATE	MANUFACTURING TOLERANCES TO BE IN ACCORDANCE WITH ASCO PROCEDURE MP-1-003. FOR PLASTIC PARTS SEE MP-1-005		ASSEMB. REF. NO.		COMPUTER GENERATED DRAWING
DRAWN BY	LY	5/4/11				SCALE: 3/8" = 1" SIZE DS
CHECKED						DWG. NO. 623188-019
PROJECT APPROVAL						DRAWING B
FINAL APPROVAL						REV. 1

**ASCO** ASCO POWER TECHNOLOGIES, LP. FLORENCE PARK, NEW JERSEY 07032 U.S.A.

