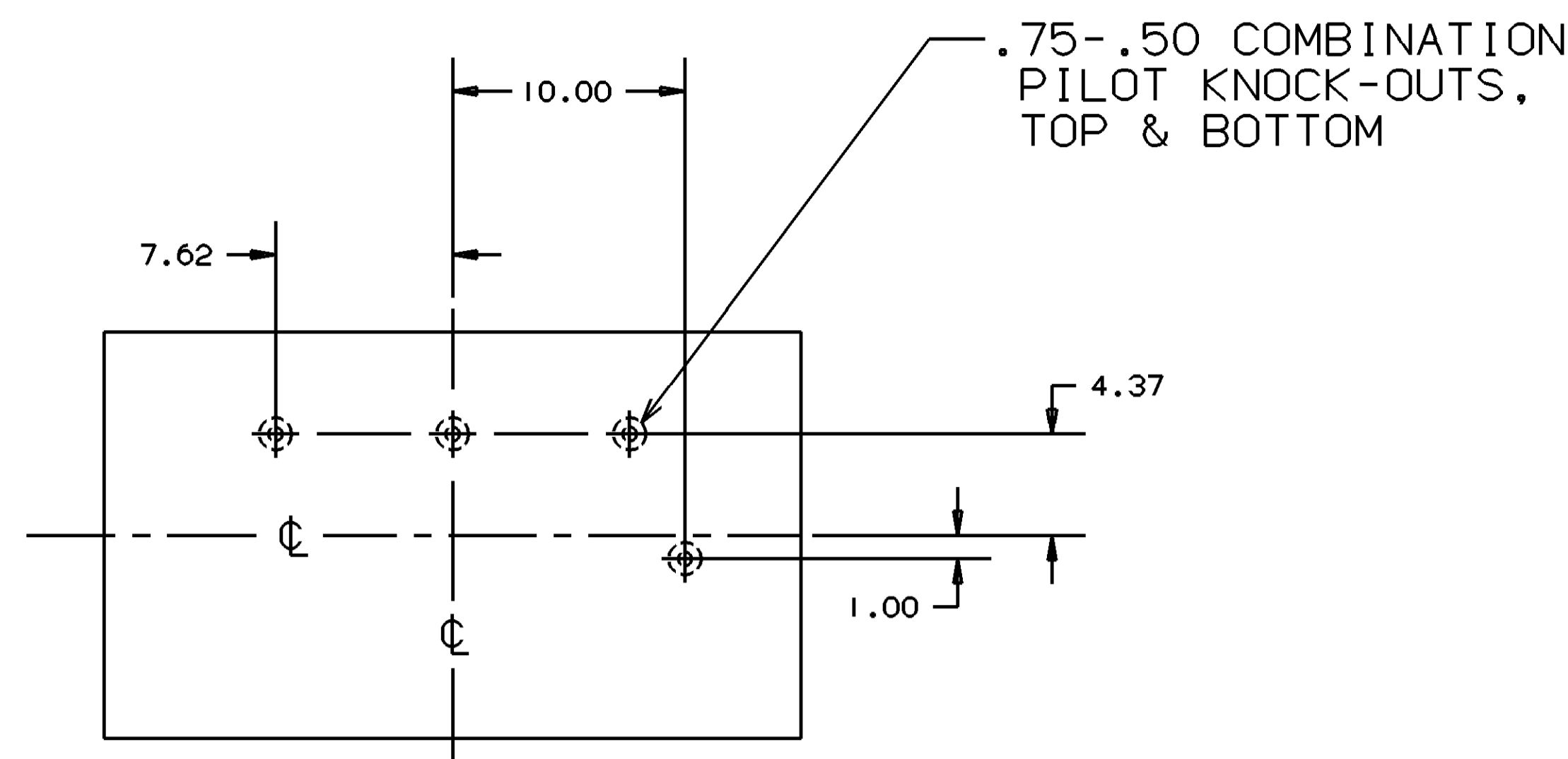


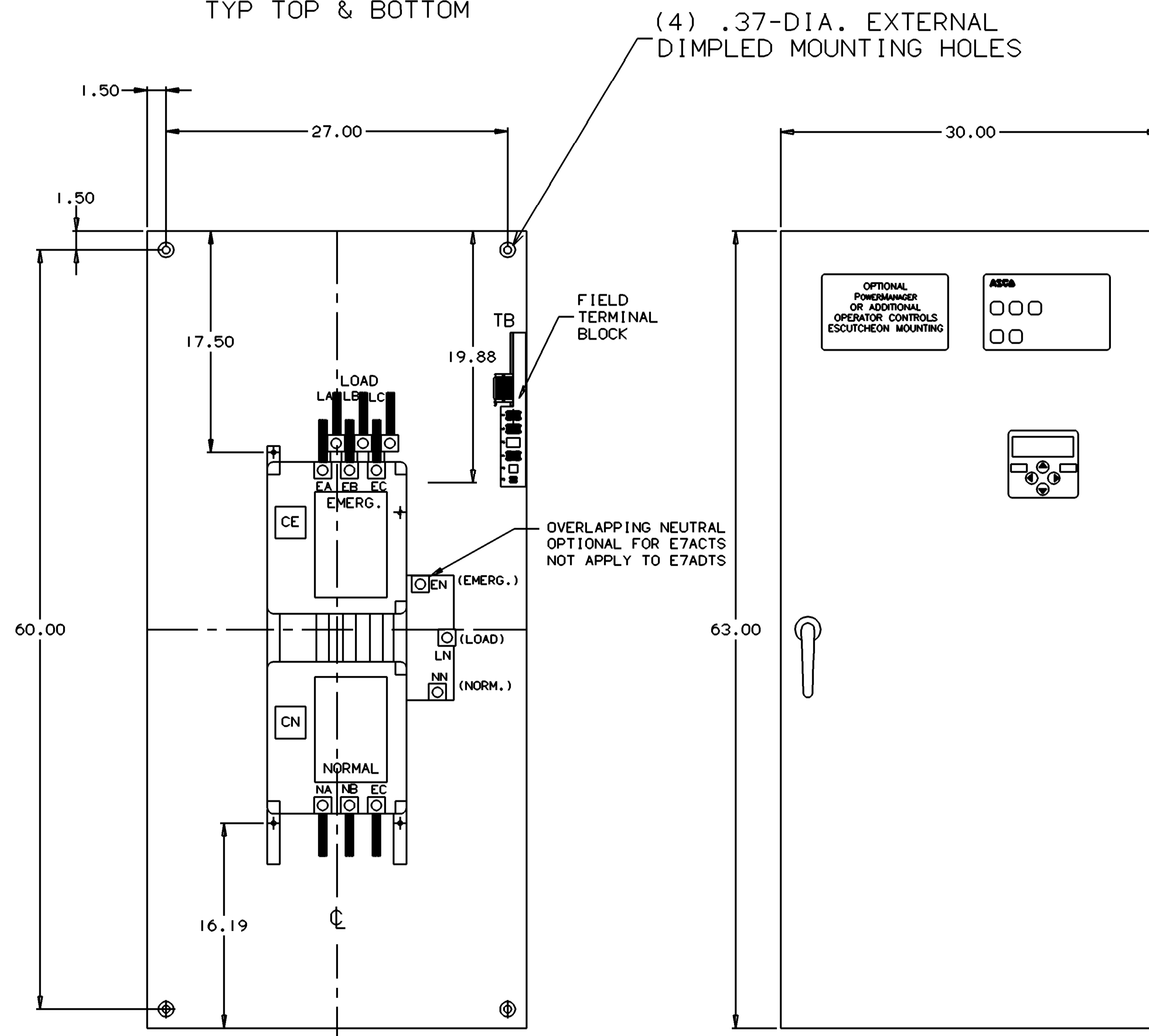
OUTLINE & MOUNTING FOR ASCO 7000 SERIES AUTOMATIC TRANSFER SWITCHES, TYPES 7ACTS & 7ADTS RATED 150-400 AMPERES

GENERAL NOTES

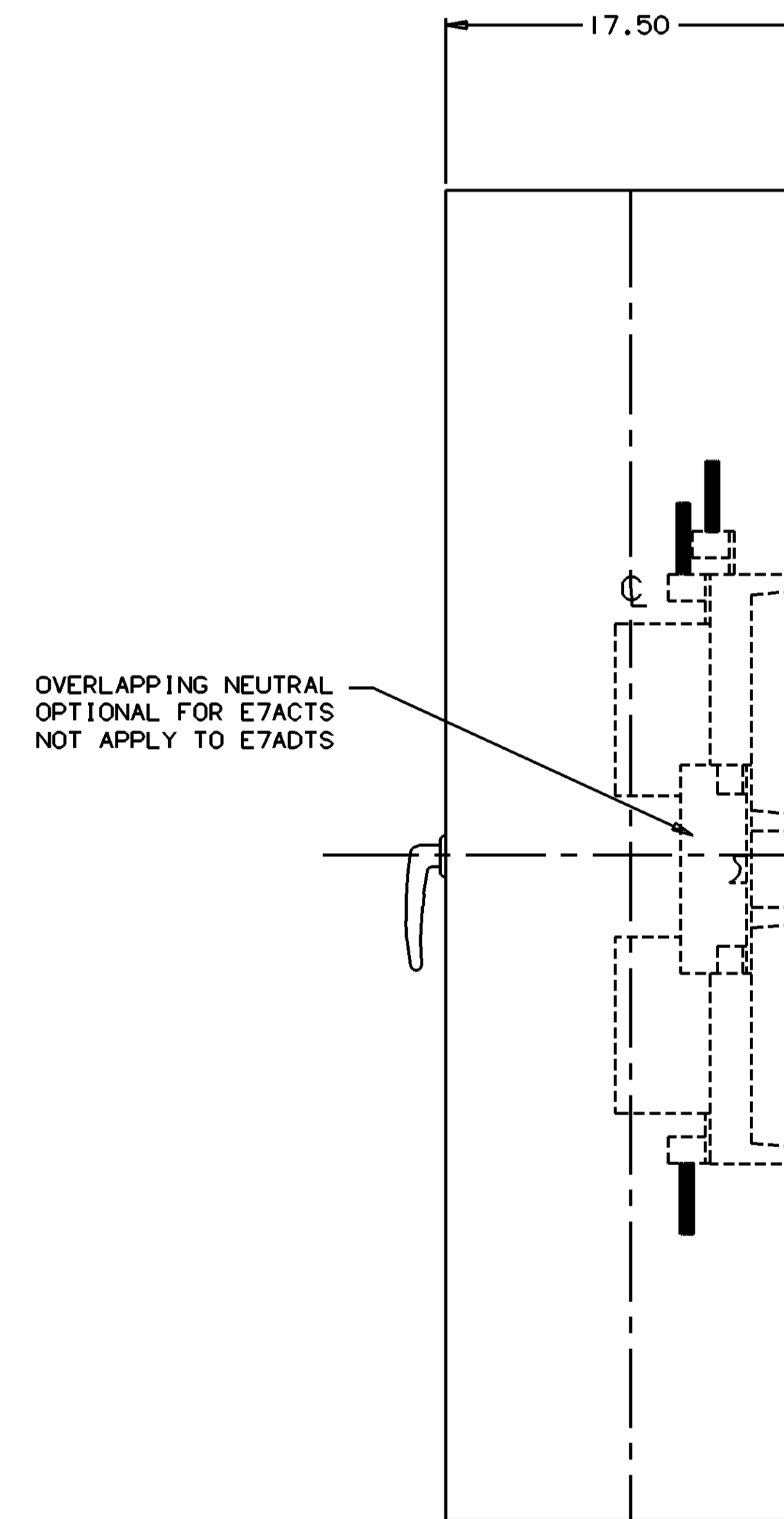
1. TYPE 1 CONSTRUCTION IN ACCORDANCE WITH UL STANDARD 508.
2. STANDARD FINISH - LIGHT GREY, ANSI 61.
3. KEY LOCKABLE HANDLE.
4. REMOVABLE SINGLE DOOR
5. TERMINALS - SCREW TYPE LUGS FOR EXTERNAL POWER CONNECTIONS.
 RANGE: (2) # 1/0 AWG TO 250 MCM Al-Cu CONDUCTORS
 OR (1) #4 TO 600 MCM Al-Cu CONDUCTOR.



TOP VIEW
TYP TOP & BOTTOM



FRONT VIEW
WITHOUT DOOR



FRONT VIEW
WITH DOOR

APPROXIMATE SHIPPING WEIGHT, LBS (KG)

POLES	WEIGHT
2	137 (62)
B2*	147 (64)
C2*	177 (88)
3	145 (66)
B3*	153 (69)
C3*	153 (69)

* ALPHA POLE PREFIX DESCRIBES OPTIONAL NEUTRAL POLE:
 B=SWITCHED TYPE NEUTRAL
 C=OVERLAPPING TYPE NEUTRAL (NOT AVAILABLE ON TYPE 7ADTS UNITS)

CATALOG NO. _____
 CERTIFIED
 TO **ASCO**® s.o. _____
 DATE _____ BY _____

PROJECT NAME:		CHANGE LETTER		158047	DRS	WK	6/27/01
OUTLINE & MOUNTING		ISSUE		ECN NO.	BY	APP.	DATE
7000 SERIES		THIRD ANGLE PROJECTION		SUBSIDIARY DISTRIBUTION			
7ACTS & 7ADTS OVERSIZED 42AV1		ASSEMBLY REF. NO.		AC	AW	AW	AW
DRAWN BY: DJB		DATE: 6/27/01		CH	AW	AA	PS
CHECKED BY: BK		DATE: 6/27/01		AG	AP	AC	AS
DRAFTING APPROVAL: WK		DATE: 6/27/01		COMPUTER GENERATED DRAWING			
FINAL APPROVAL:		DATE:		SCALE: ACAD		FILE	
ASCO Power Technologies, L.P.		ASCO Power Technologies, L.P.		SIZE: Dwg. No.		DS1623086-010	
FLORHAM PARK, NEW JERSEY 07932 U.S.A.		FLORHAM PARK, NEW JERSEY 07932 U.S.A.		CHANGE LETTER		ECN NO. 158047 SHEET	

LEFT SIDE