

OUTLINE FOR ASCO 7000 SERIES 260-400 AMPERE "E" FRAME TRANSFER SWITCHES TYPE 1 ENCLOSURE

GENERAL NOTES

1. TYPE 1 WALL MOUNTED ENCLOSURE.
2. STANDARD FINISH ANSI 61 GRAY.
3. KEY LOCKABLE HANDLE.
4. REMOVABLE SINGLE DOOR.
5. TERMINALS - SCREW TYPE LUGS FOR EXTERNAL POWER CONNECTIONS.
 RANGE: (2) #1/0 AWG TO 250 MCM
 OR
 (1) #4 AWG TO 600 MCM
6. THE STANDARD SWITCH CONFIGURATION IS FOR TOP EMERGENCY AND LOAD, BOTTOM NORMAL. OPTIONALLY, THE SWITCH MAY BE SUPPLIED WITH REVERSE SOURCES AND/OR BOTTOM LOAD. (REFER TO THE WIRING DIAGRAM FURNISHED WITH EACH TRANSFER SWITCH TO DETERMINE TERMINATION POSITIONS).
7. REFER TO THE OPERATOR'S MANUAL PROVIDED WITH EACH UNIT BEFORE INSTALLING AND OPERATING THE SWITCH.
8. NEUTRAL CONFIGURATIONS:

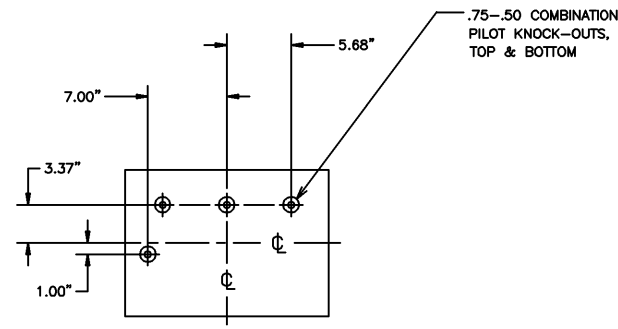
AN OPTIONAL FULL RATED NEUTRAL CONFIGURATION FOR EACH SOURCE AND THE LOAD MAY BE PROVIDED. WHEN EQUIPPED IT IS IN ONE OF THE FOLLOWING FORMATS AS SPECIFIED BY THE CATALOG NUMBER NO. NEUTRAL TYPE:

- (A) SOLID (COPPER BUS) NEUTRAL
- (B) SWITCHED NEUTRAL POLE
- (C) OVERLAPPING NEUTRAL POLE

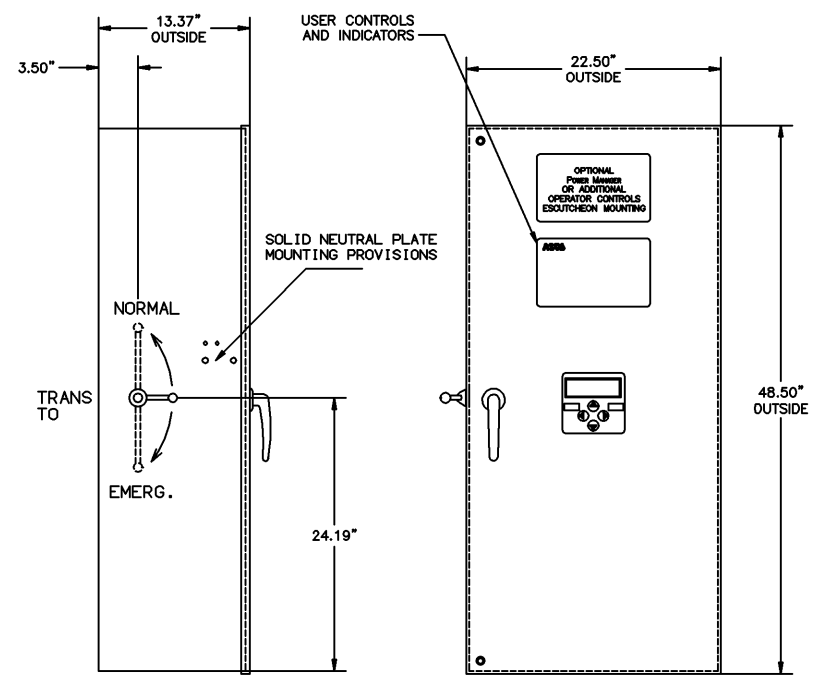
9. = CENTER OF GRAVITY.

UNIT WEIGHT, LBS (KG)

AMP SIZE	POLES	WEIGHT
260A TO 400A	2	122 (58)
	B2	130 (62)
	C2	130 (62)
	3	130 (62)
	B3	NOT AVAILABLE
	C3	138 (66)

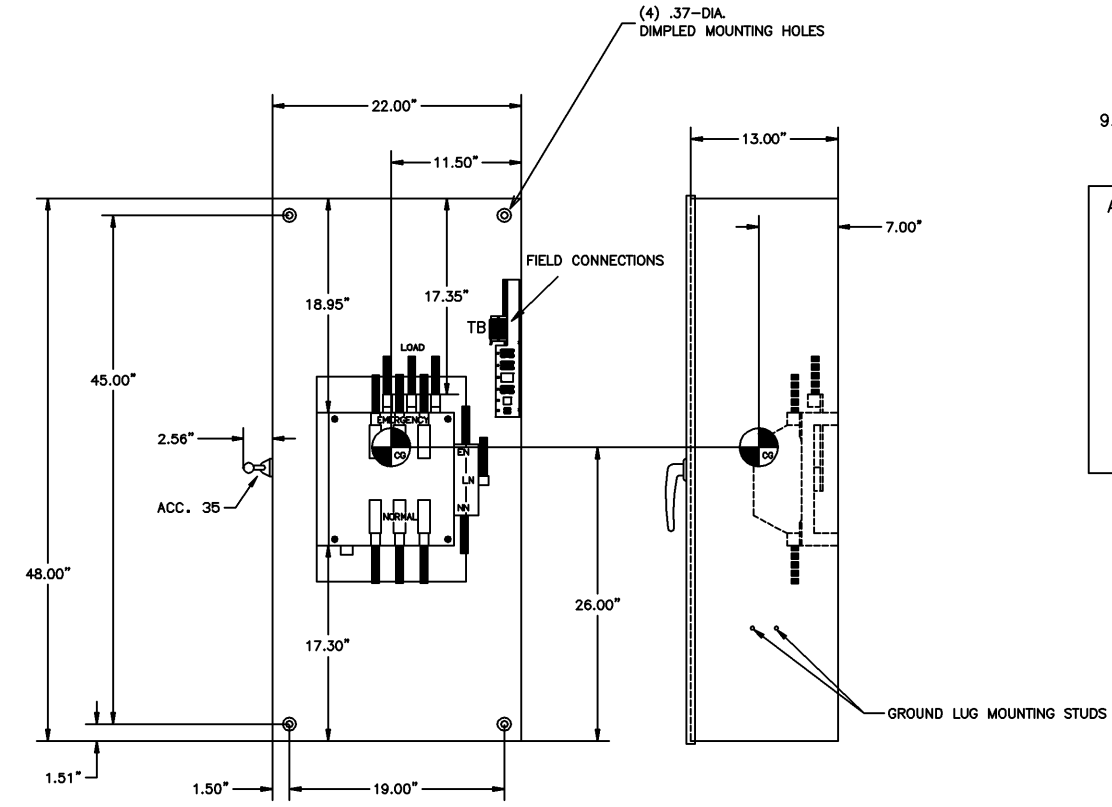


TOP VIEW
TYP TOP & BOTTOM



LEFT SIDE

FRONT VIEW
WITH DOOR



FRONT VIEW
WITHOUT DOOR

RIGHT SIDE

CATALOG NO. _____
CERTIFIED
 To **ASCO**® s.o. _____
 DATE _____ BY _____

B	205525	CC	WK	08/12/05
	SEE ECH			
A	180827	WK	WK	06/04/02
	SEE ECH			
	148478	BWM	JJC	6/98
	ISSUE			

PROJECT NAME:		CHANGE LETTER:		EDN NO.	BY	APP.	DATE
OUTLINE		SUBSIDIARY DISTRIBUTION		AE	AM	AL	AL
7000 SERIES		THIRD ANGLE PROJECTION		CH	AM	PS	AR
W/ACC. 35		COMPUTER GENERATED DRAWING		AG	AP	AC	AS
BY	DATE	MANUFACTURING TOLERANCES TO BE IN ACCORDANCE WITH ASCO PROCEDURE MP-1-003. FOR PLASTIC PARTS SEE MP-1-005.		ASSEMBLY REF. NO.		SCALE	
DRAWN BY	BWM 6/98	PROPERTY OF ASCO POWER TECHNOLOGIES. USE PERMITTED FOR OUR WORK ONLY. ALL RIGHTS OF DESIGN OR INVENTION ARE RESERVED.		SIZE		ACAD FILE	
CHECKED	WJC 6/98	ASCO POWER TECHNOLOGIES, LP.		DS		621165-002	
APPROVED	JJC 6/98	FLORHAM PARK, NEW JERSEY 07832 U.S.A.		CHANGE LETTER		EDN NO. 205525 SHEET 1 OF 1	