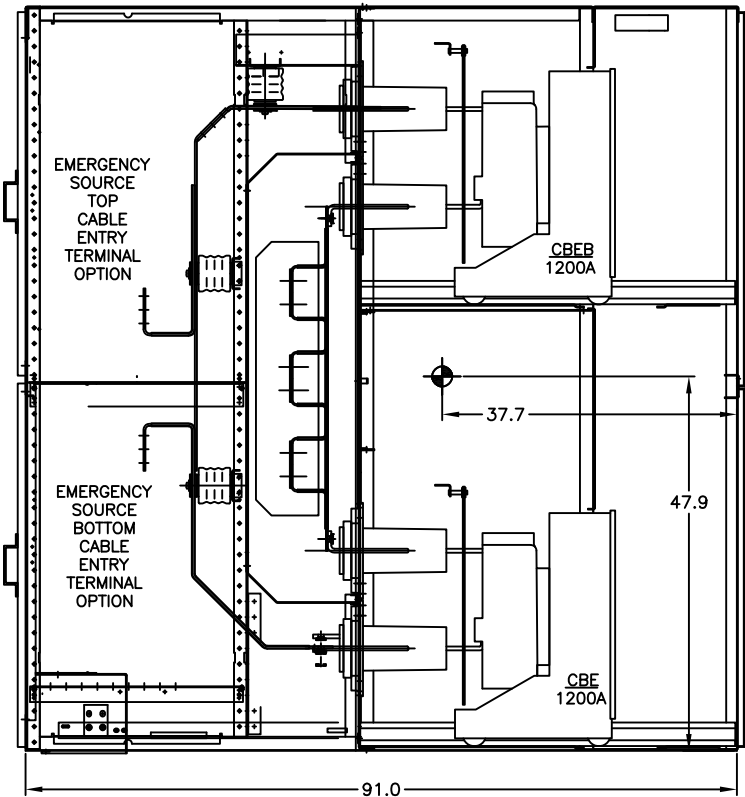
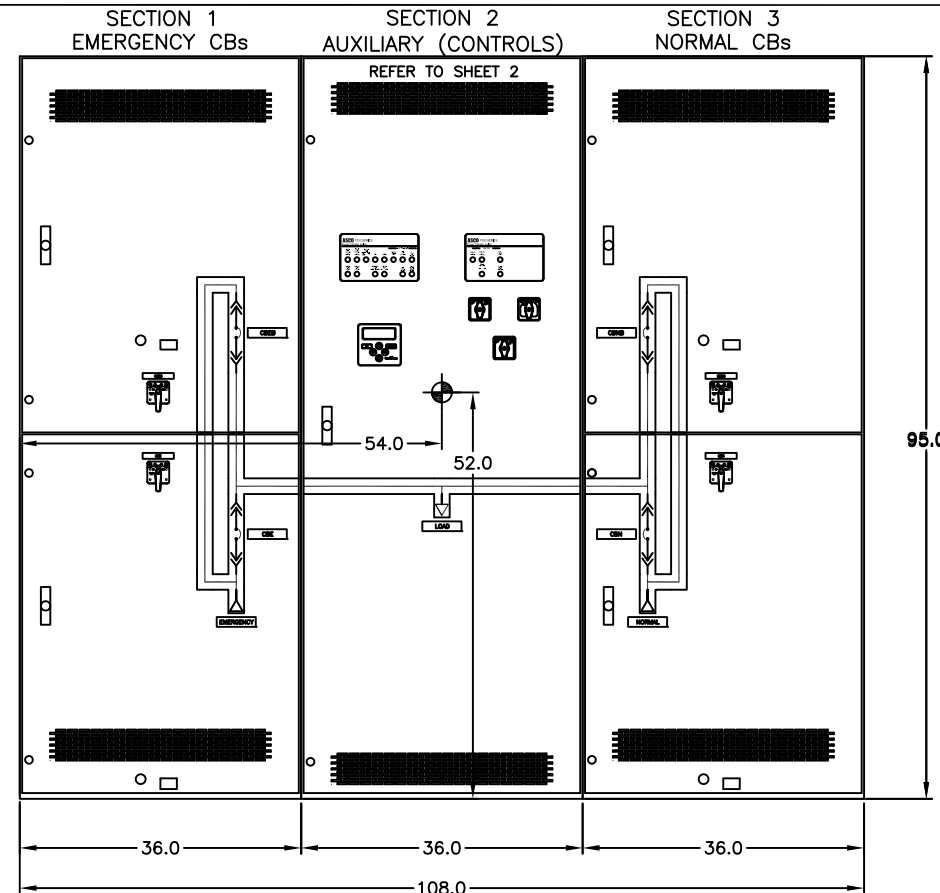


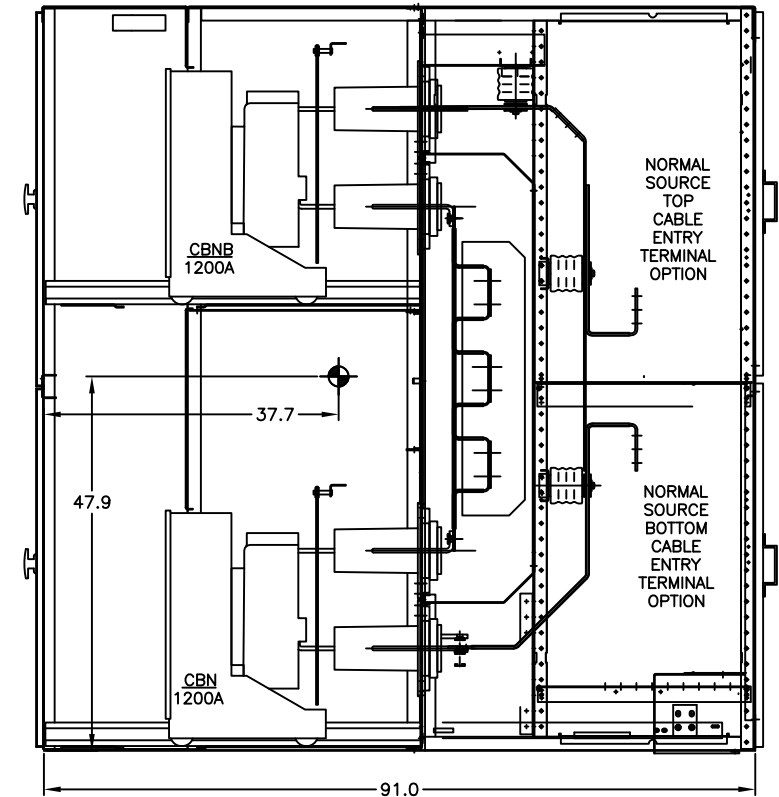
OUTLINE FOR **ASCO**® 7000 SERIES MEDIUM VOLTAGE TRANSFER SYSTEMS WITH BYPASS, RATED 5 & 15kV, 1200 AMPS, 3 PHASE/3 WIRE, TYPE 1 ENCLOSED



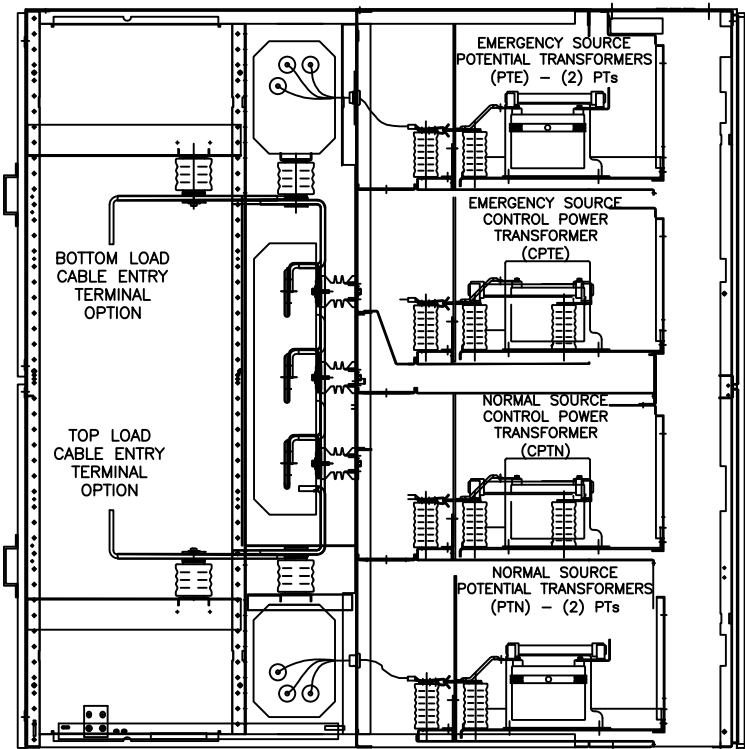
SECTION 1 LEFT SIDE VIEW  
EMERGENCY SOURCE CIRCUIT BREAKERS



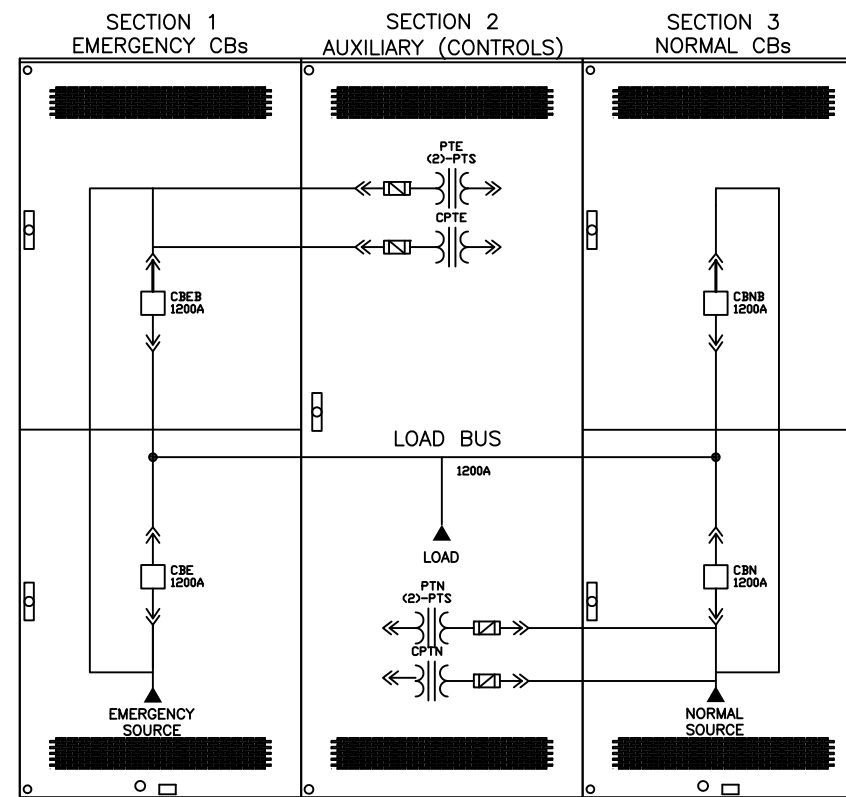
FRONT ELEVATION



SECTION 3 RIGHT SIDE VIEW  
NORMAL SOURCE CIRCUIT BREAKERS



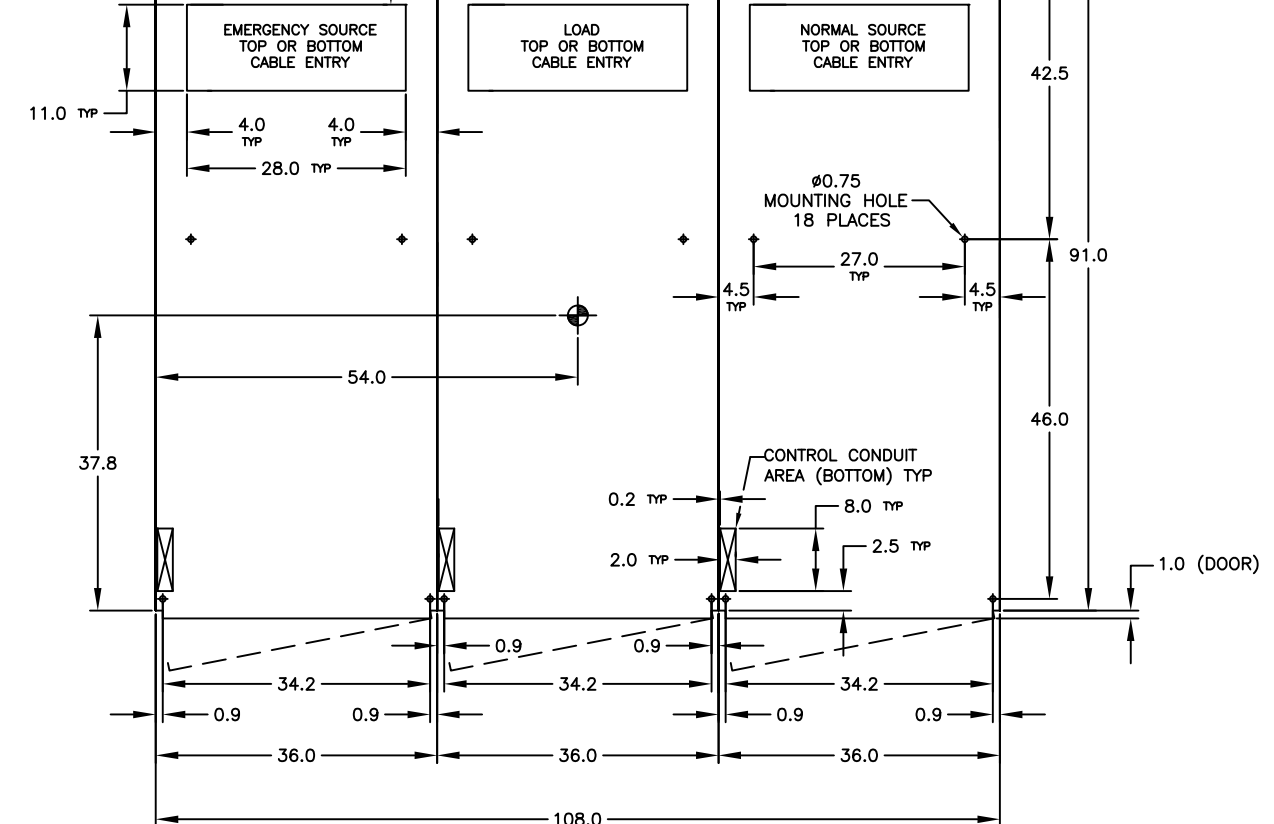
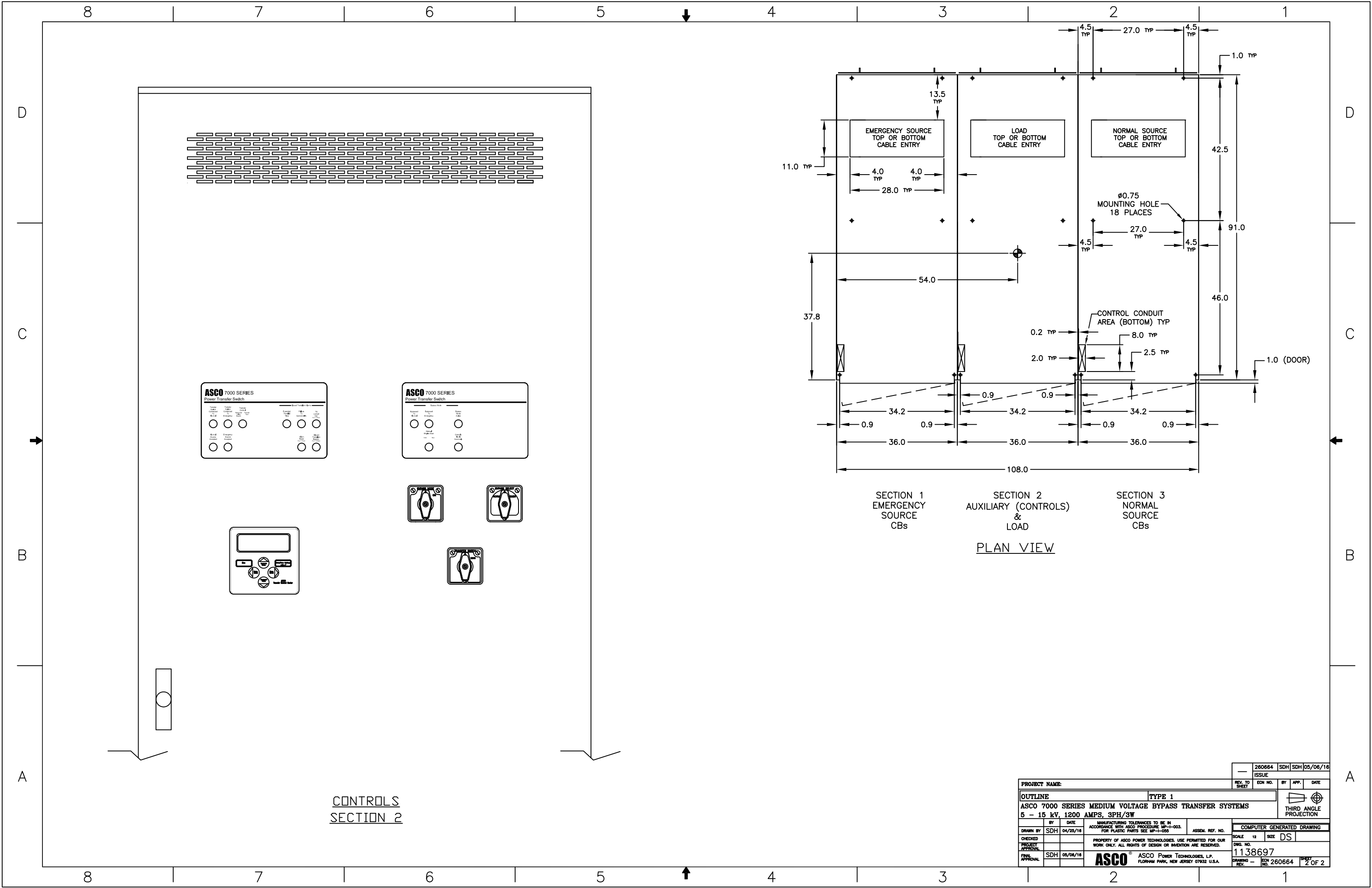
SECTION 2 LEFT SIDE VIEW  
AUXILIARY (CONTROLS) & LOAD TERMINAL SECTION



**GENERAL NOTES:**

- LISTED TO UNDERWRITERS LABORATORY STANDARD UL 1008A, STANDARD FOR TRANSFER SWITCH EQUIPMENT OVER 600 VOLTS. REFER TO PRODUCT MARKING FOR SHORT-CIRCUIT CURRENT RATINGS.
- TYPE 1, METAL-CLAD, DRAW-OUT SWITCHGEAR RATED 5 kV OR 15 kV AS SPECIFIED. INDIVIDUALLY GROUNDING, COMPARTMENTALIZED, STEEL STRUCTURES CONFORMING TO ANSI C37.20.2.
- SQUARE-D, 1200 AMP TYPE VR DRAW-OUT VACUUM CIRCUIT BREAKERS WITH MVA RATING AS SPECIFIED.
- FINISH: ANSI #61 FINISH, PROCEDURES: ZINC PHOSPHATE WITH NON-CHROMIC SEAL, RUST INHIBITED TREATMENT WITH BAKED POLYESTER COATING.
- REQUIRED CLEARANCES:  
FRONT AISLE: 72.0 INCHES (64.0 INCHES MINIMUM)  
REAR AISLE: 36.0 INCHES
- PROVIDED WITH TOP OR BOTTOM CABLE ENTRANCE FOR NORMAL SOURCE, EMERGENCY SOURCE, AND LOAD AS SPECIFIED.
- BUS SYSTEM DATA: 1200 AMPERES, SILVER PLATED COPPER, EPOXY INSULATED MAIN BUS BRACED FOR 50KA RMS SYMMETRICAL. EPOXY STAND-OFF INSULATORS. GLASS POLYESTER BETWEEN SECTIONS. BUS BARRIER BREAKER BUSHINGS IN CELL ARE POLYESTER. BARE COPPER GROUND BUS
- HANDLING: SWITCHGEAR SECTIONS ARE FURNISHED WITH FOUR LIFTING LUGS. A CRANE SHALL BE USED WITH A SLING AND A SPREADER BAR.

PROJECT NAME:		260664 SDH SDH 05/06/16	
REV. TO SHEET	ISSUE	ECN NO.	BY APP. DATE
OUTLINE		TYPE 1	
ASCO 7000 SERIES MEDIUM VOLTAGE BYPASS TRANSFER SYSTEMS			
5 - 15 kV, 1200 AMPS, 3PH/3W			
MANUFACTURING TOLERANCES TO BE IN ACCORDANCE WITH ASCO PROCEDURE MP-1-003. FOR PLASTIC PARTS SEE MP-1-005	ASSEM. REF. NO.	SCALE	12 DS
CHECKED BY SDH	DATE 04/25/16	PROJECT APPROVAL	1138697
FINAL APPROVAL	SDH 05/06/16	ASCO	ASCO POWER TECHNOLOGIES, L.P. FLORHAM PARK, NEW JERSEY 07932 U.S.A.
DRAWING NO. 1138697		SHEET 1 OF 2	



SECTION 1  
EMERGENCY  
SOURCE  
CBs

SECTION 2  
AUXILIARY (CONTROLS)  
&  
LOAD

SECTION 3  
NORMAL  
SOURCE  
CBs

PLAN VIEW

CONTROLS  
SECTION 2

PROJECT NAME:		260664 SDH SDH 05/06/16	
REV. TO SHEET	ISSUE	ECN NO.	BY APP. DATE
OUTLINE		TYPE 1	
ASCO 7000 SERIES MEDIUM VOLTAGE BYPASS TRANSFER SYSTEMS			
5 - 15 kV, 1200 AMPS, 3PH/3W			
CHECKED	DATE	MANUFACTURING TOLERANCES TO BE IN ACCORDANCE WITH ASCO PROCEDURE MP-4-003. FOR PLASTIC PARTS SEE MP-1-005	ASSEM. REF. NO.
PROJECT APPROVAL		PROPERTY OF ASCO POWER TECHNOLOGIES. USE PERMITTED FOR OUR WORK ONLY. ALL RIGHTS OF DESIGN OR INVENTION ARE RESERVED.	SCALE 12 SIZE DS
FINAL APPROVAL	SDH 05/06/16	ASCO	COMPUTER GENERATED DRAWING
		ASCO POWER TECHNOLOGIES, L.P. FLORHAM PARK, NEW JERSEY 07932 U.S.A.	DWG. NO. 1138697
			DRAWING REV. -- ECN NO. 260664 SHEET NO. 2 OF 2