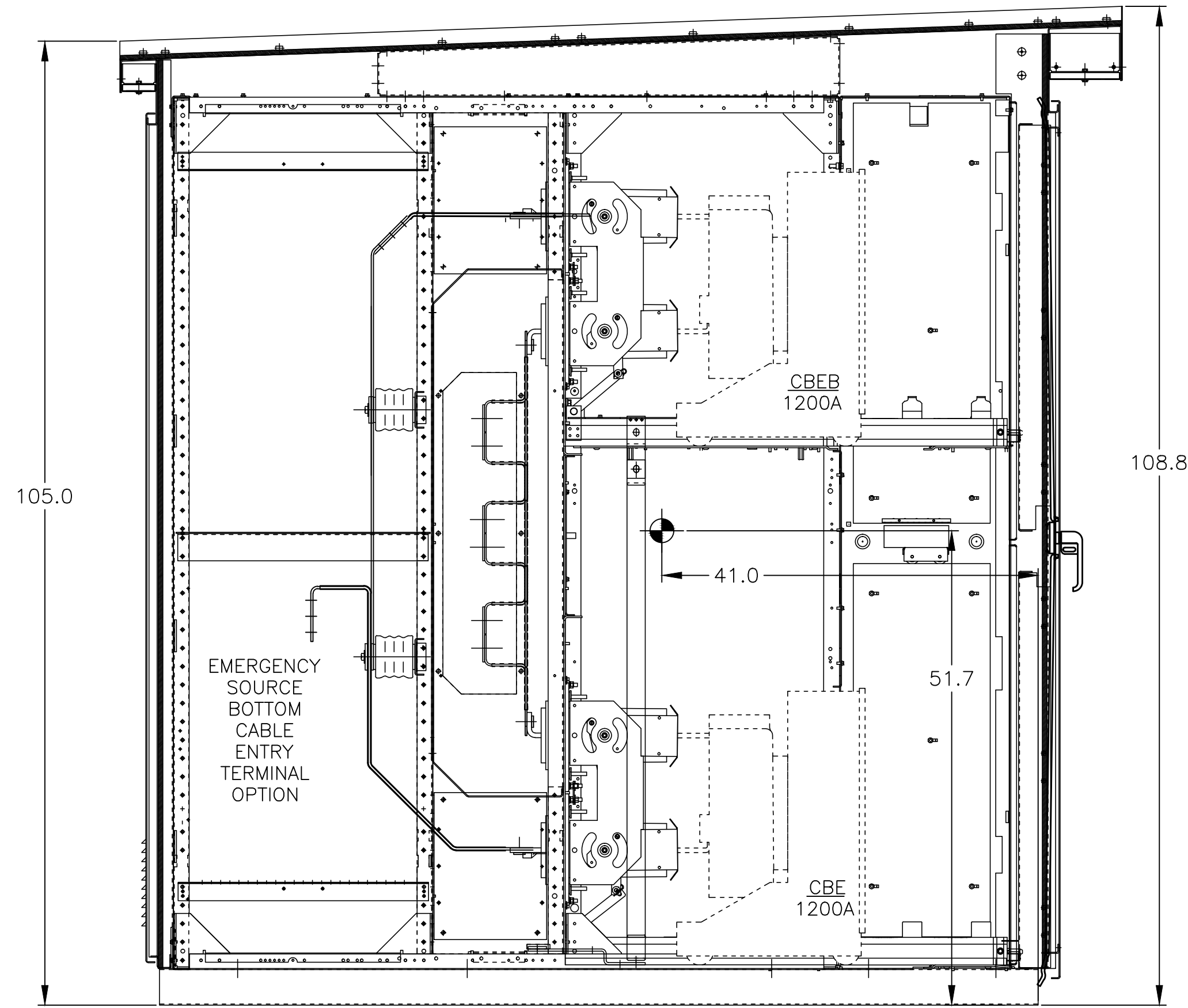
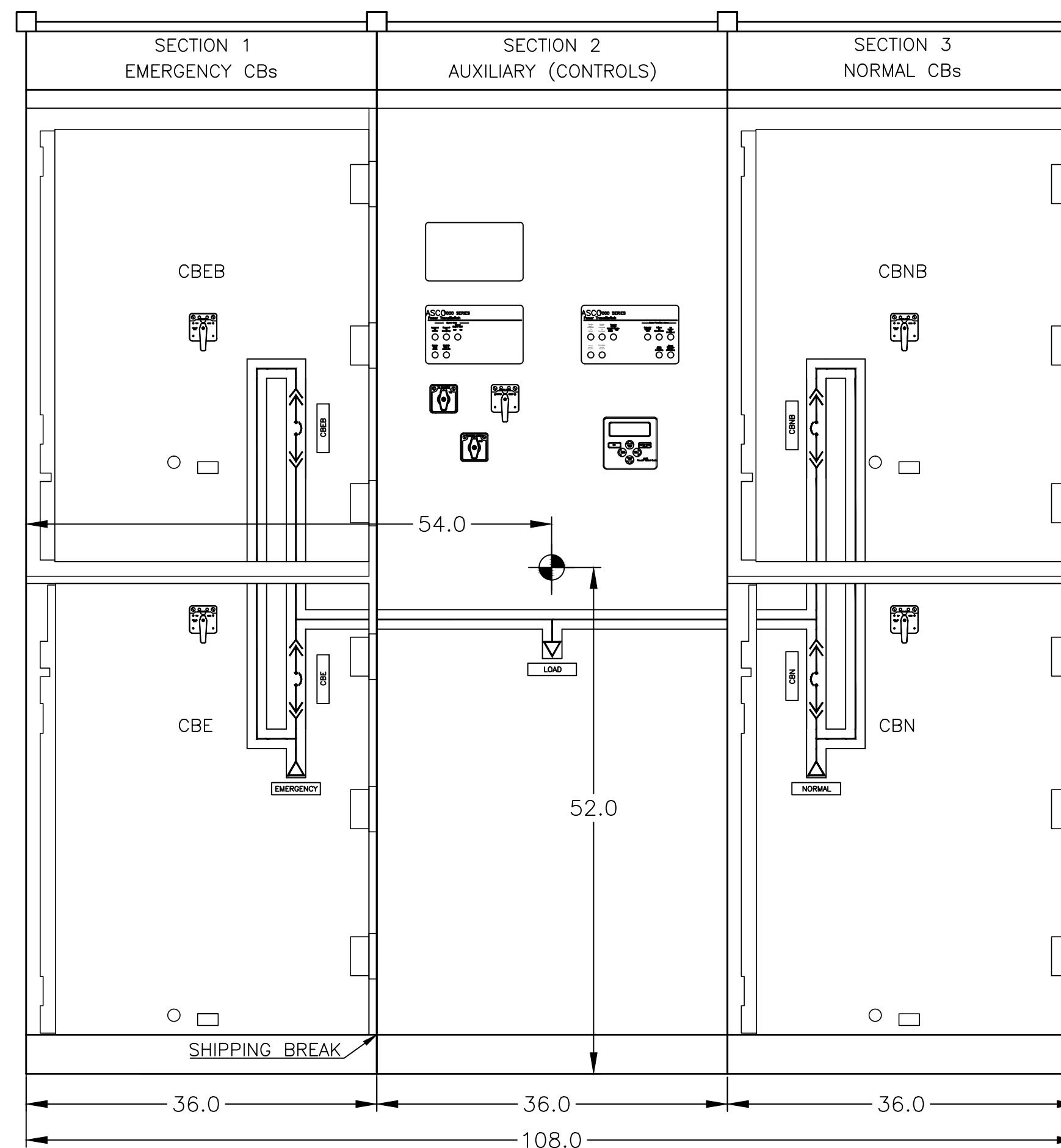


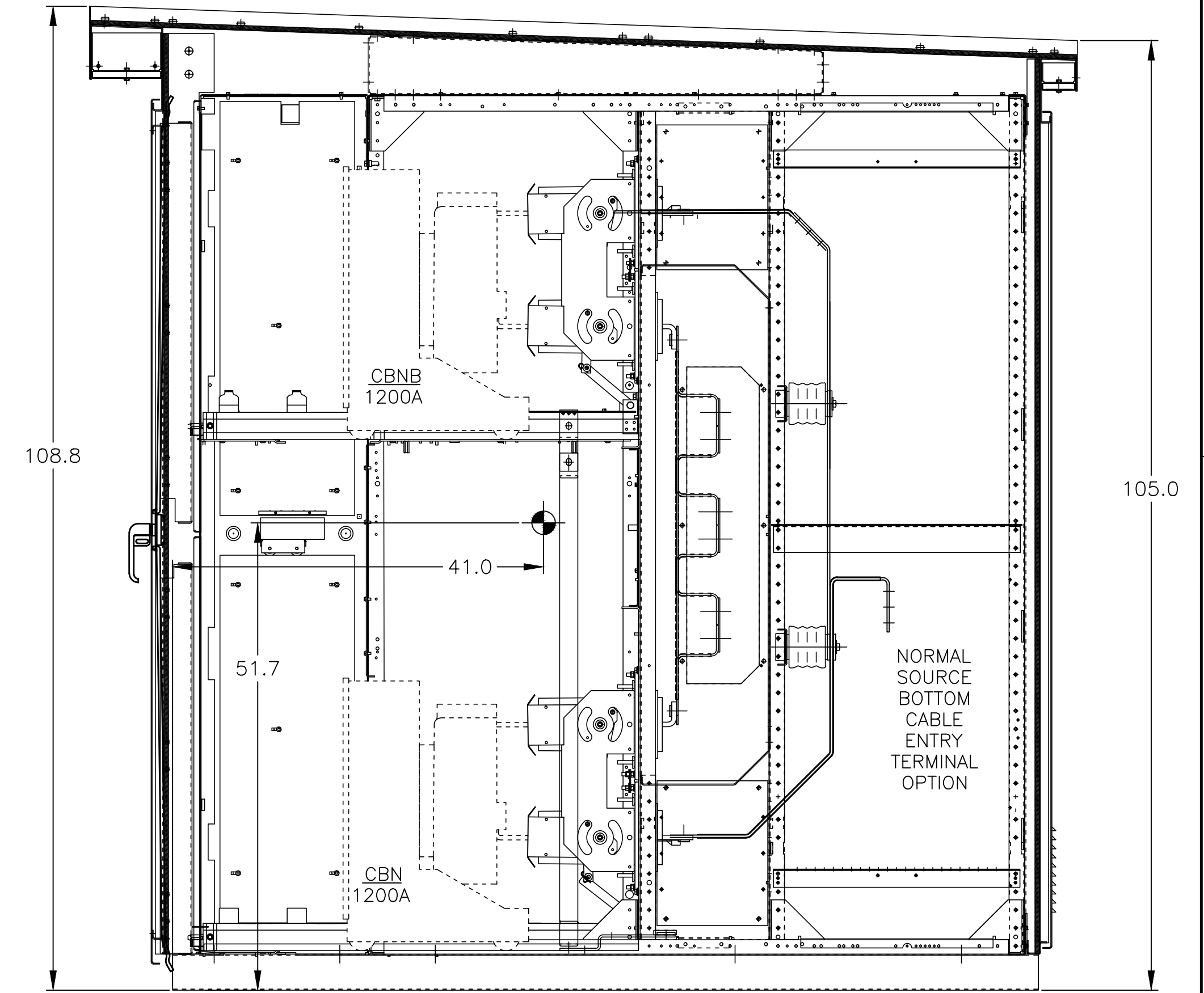
OUTLINE FOR **ASCO**® 7000 SERIES MEDIUM VOLTAGE TRANSFER SYSTEMS WITH BYPASS, RATED 5 & 15kV, 1200 AMPS, 3 PHASE/3 WIRE, TYPE 3R ENCLOSED



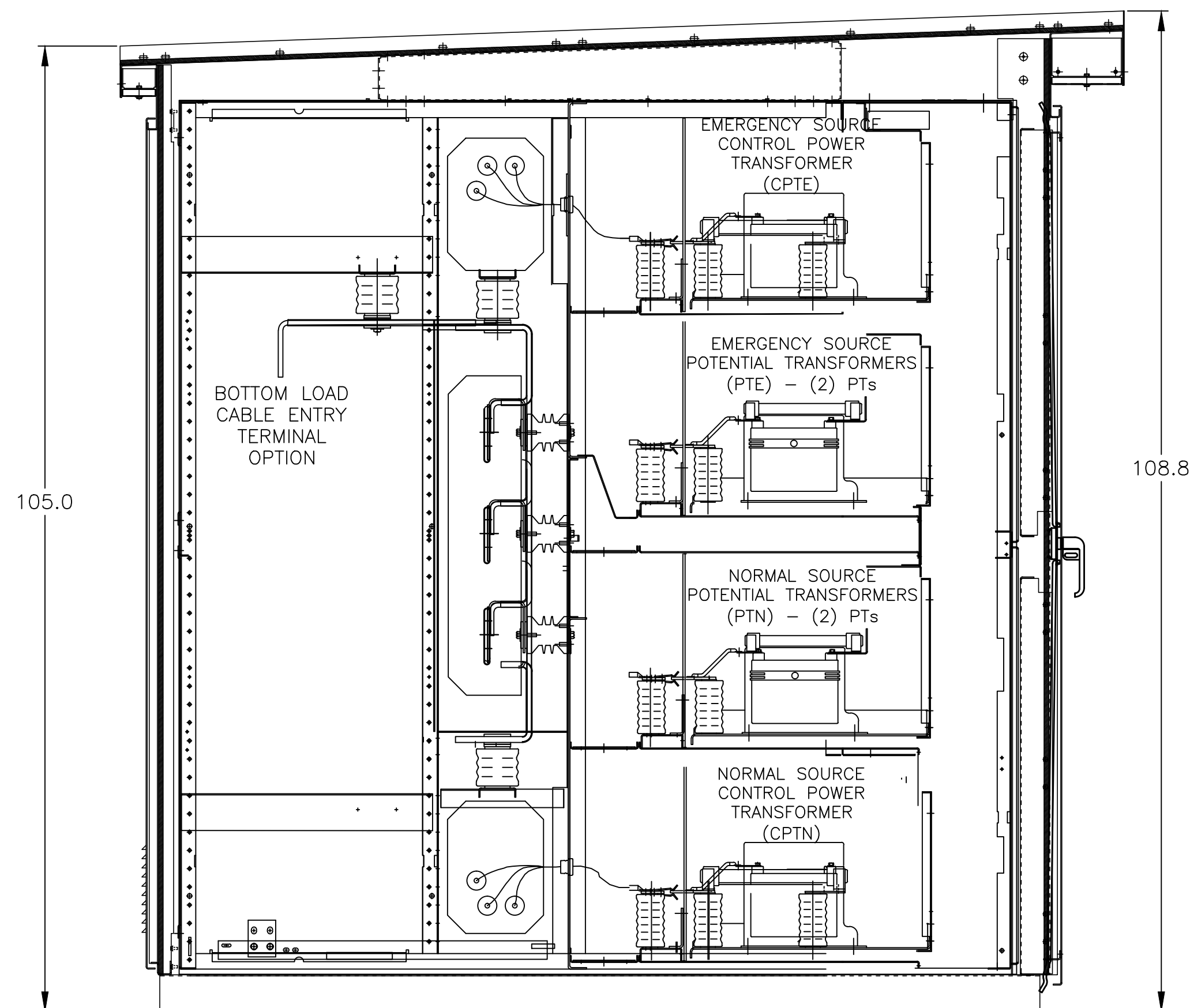
SECTION 1 LEFT SIDE VIEW
EMERGENCY SOURCE CIRCUIT BREAKERS



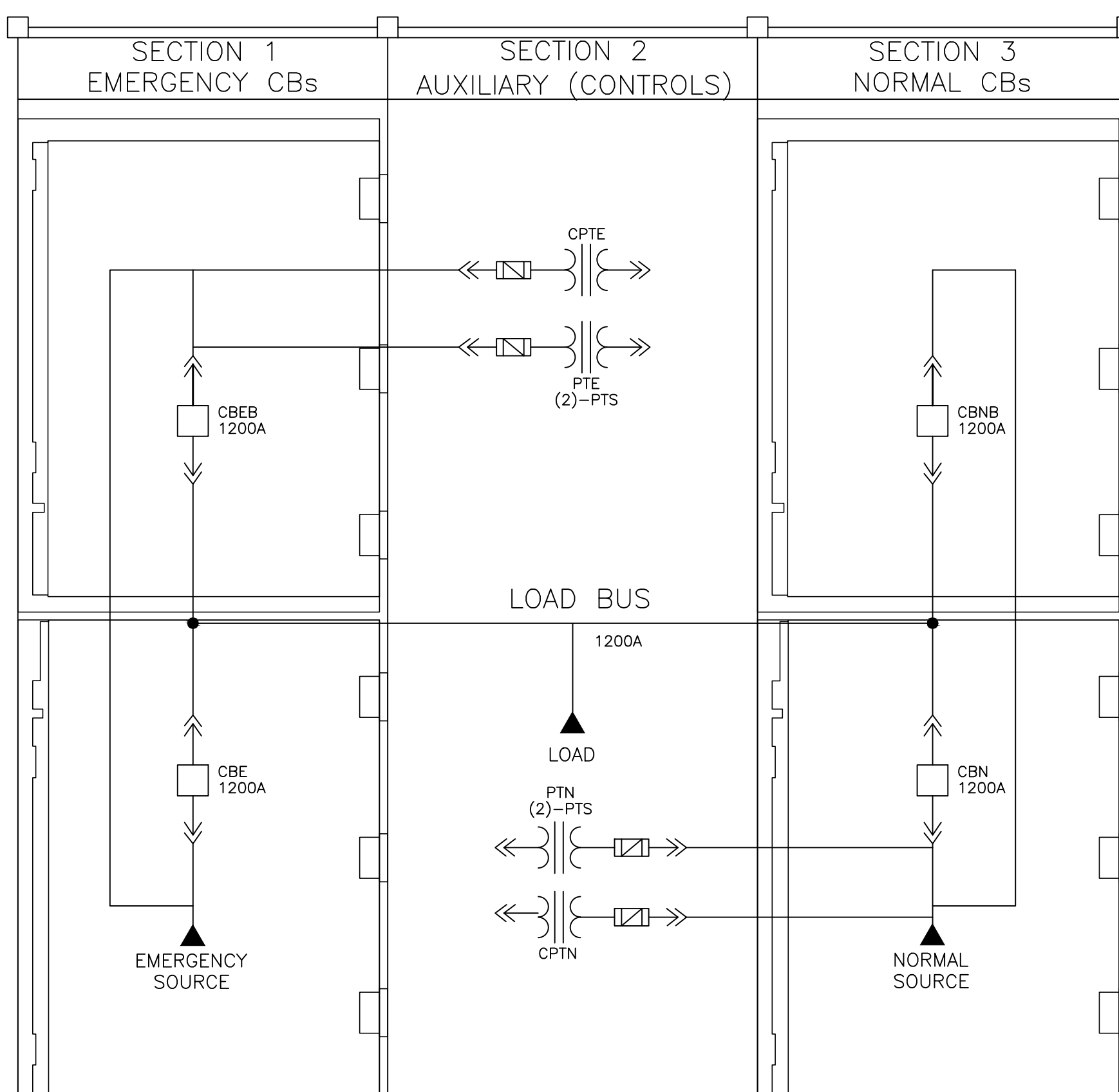
FRONT ELEVATION
(WITHOUT OUTER DOORS)



SECTION 3 LEFT SIDE VIEW
NORMAL SOURCE CIRCUIT BREAKERS



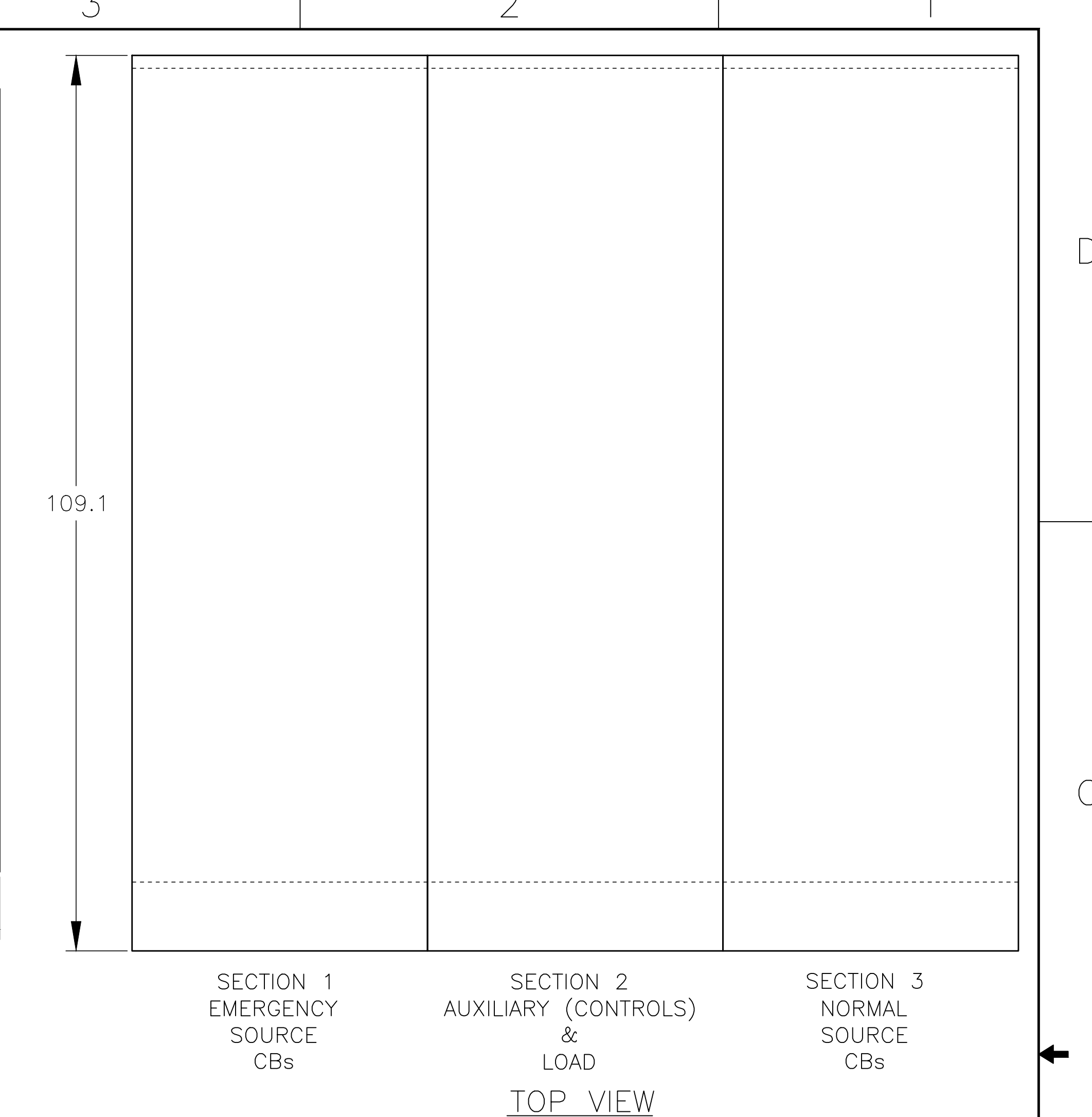
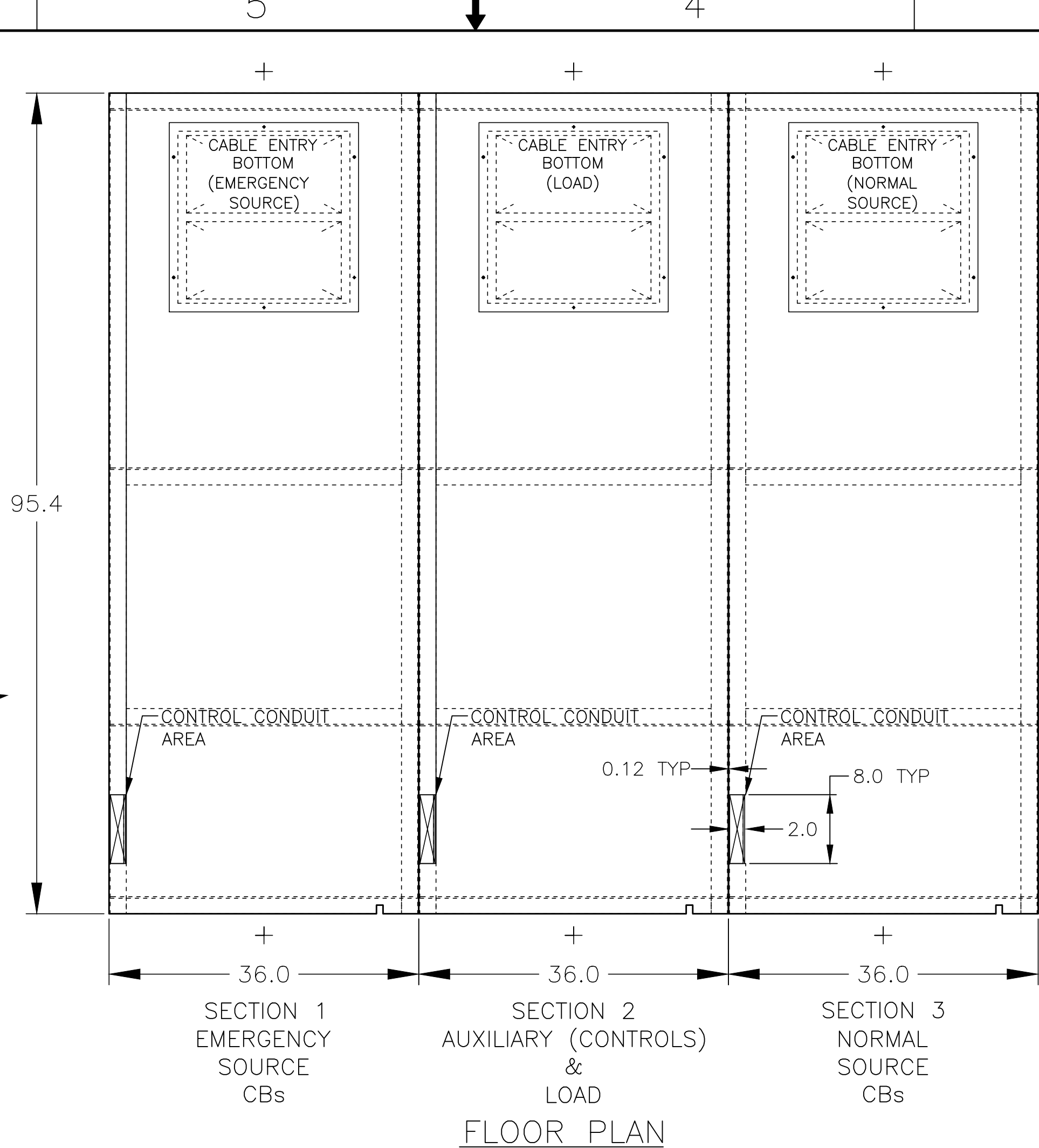
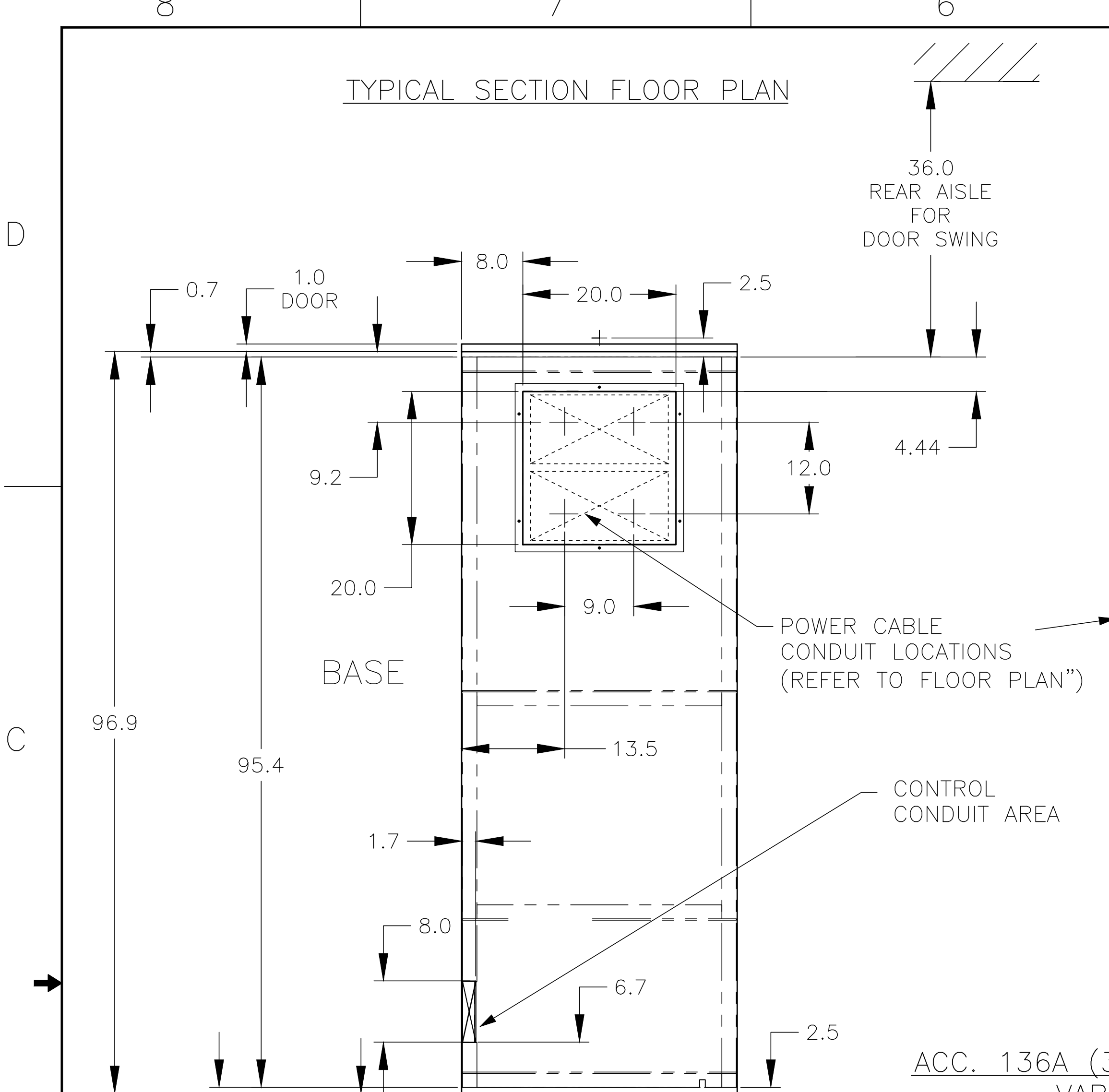
SECTION 2 LEFT SIDE VIEW
AUXILIARY (CONTROLS) & LOAD TERMINAL SECTION



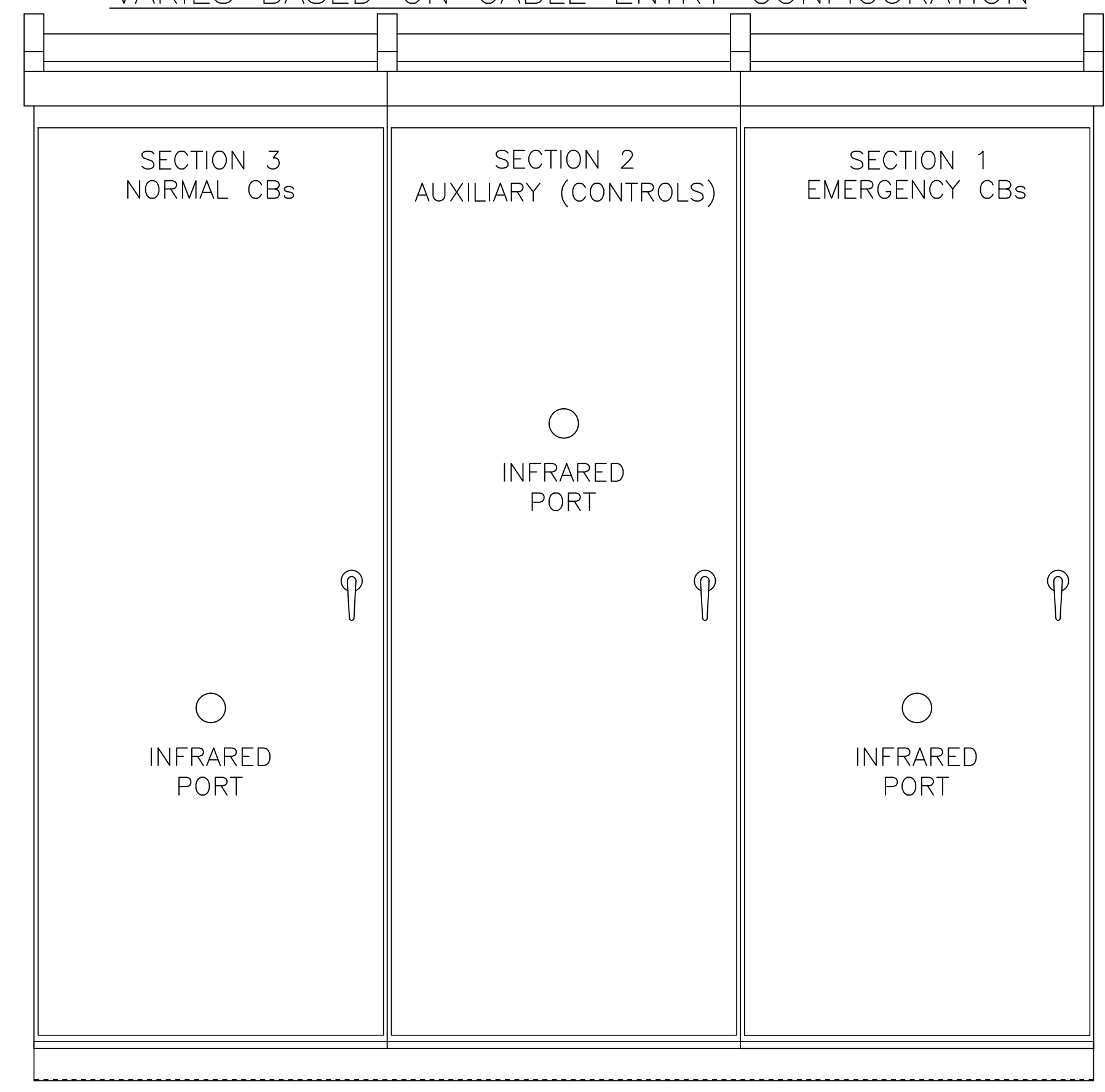
GENERAL NOTES:

- LISTED TO UNDERWRITERS LABORATORY STANDARD UL 1008A, STANDARD FOR TRANSFER SWITCH EQUIPMENT OVER 600 VOLTS. REFER TO PRODUCT MARKING FOR SHORT-CIRCUIT CURRENT RATINGS.
- TYPE 3R NON WALK-IN METAL-CLAD, DRAW-OUT SWITCHGEAR RATED 5 kV OR 15 kV AS SPECIFIED. INDIVIDUALLY GROUNDED, COMPARTMENTALIZED, STEEL STRUCTURES CONFORMING TO ANSI C37.20.2.
- SQUARE-D, 1200 AMP TYPE VR DRAW-OUT VACUUM CIRCUIT BREAKERS WITH MVA RATING AS SPECIFIED.
- FINISH: ANSI #61 FINISH, PROCEDURES: ZINC PHOSPHATE WITH NON-CHROMIC SEAL, RUST INHIBITED TREATMENT WITH BAKED POLYESTER COATING.
- REQUIRED CLEARANCES:
FRONT AISLE: 72.0 INCHES (64.0 INCHES MINIMUM)
REAR AISLE: 36.0 INCHES
- PROVIDED WITH BOTTOM CABLE ENTRANCE FOR NORMAL SOURCE, EMERGENCY SOURCE, AND LOAD.
- BUS SYSTEM DATA: 1200 AMPERES, SILVER PLATED COPPER, EPOXY INSULATED MAIN BUS BRACED FOR 50KA RMS SYMMETRICAL. EPOXY STAND-OFF INSULATORS. GLASS POLYESTER BETWEEN SECTIONS. BUS BARRIER BREAKER BUSHINGS IN CELL ARE POLYESTER. BARE COPPER GROUND BUS
- HANDLING: SWITCHGEAR SECTIONS ARE FURNISHED WITH FOUR LIFTING LUGS. A CRANE SHALL BE USED WITH A SLING AND A SPREADER BAR.

PROJECT NAME:		REV. TO SHEET		ECN NO.	BY	APP.	DATE
OUTLINE		TYPE 3R NON WALK-IN		265966	NS	JPB	03/09/17
ASCO 7000 SERIES MEDIUM VOLTAGE BYPASS TRANSFER SYSTEMS		5 - 15 kV, 1200 AMPS, 3PH/3W ACC.136A/A4(INFRARED PORT)		263110	NS	JPB	09/14/16
DRAWN BY: NS		DATE: 09/14/16		MANUFACTURING TOLERANCES TO BE IN ACCORDANCE WITH ASCO PROCEDURE MP-1-003. FOR PLASTIC PARTS SEE MP-1-035		ASSEM. REF. NO.	
CHECKED: JPB		DATE: 09/14/16		PROPERTY OF ASCO POWER TECHNOLOGIES. USE PERMITTED FOR OUR WORK ONLY. ALL RIGHTS OF DESIGN OR INVENTION ARE RESERVED.		SCALE: NONE	
PROJECT APPROVAL:		FINAL APPROVAL:		ASCO® ASCO POWER TECHNOLOGIES, L.P. FLORHAM PARK, NEW JERSEY 07932 U.S.A.		SIZE: DS	
DRAWING A		ECN 265966		1138697-001		SHEET 1 OF 2	

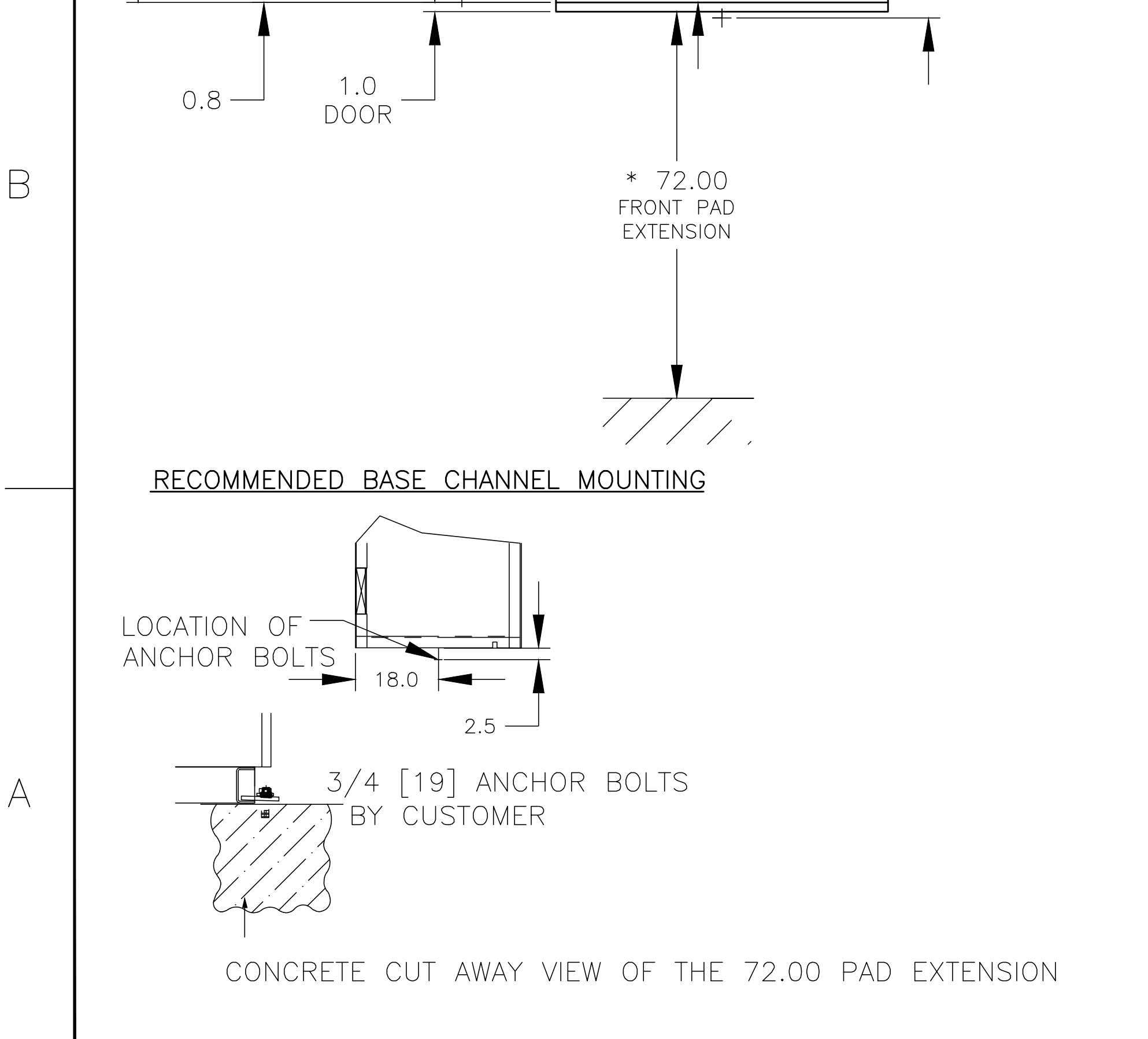


ACC. 136A (3" IR PORT) AND ACC. 136A4 (4" IR PORT) LOCATION VARIES BASED ON CABLE ENTRY CONFIGURATION



INSTALLATION-FOUNDATION REQUIREMENTS

- * LIFT TRUCK IS REQUIRED, 72.00 [1829] FRONT PAD EXTENSION REQUIRED. THE SWITCHGEAR MUST BE INSTALLED ON A FLAT, LEVEL SURFACE. IT IS RECOMMENDED TO INSTALL THE SWITCHGEAR ON A CONCRETE PAD LEVELED TO 1/8 [3] IN ANY SQUARE YARD.
- THE CONCRETE PAD SHOULD EXTEND 72.00 [1829]. IN FRONT OF THE SWITCHGEAR FOR MOVEMENT OF THE BREAKER LIFT TRUCK. THE REAR OF THE PAD SHOULD EXTEND A MINIMUM OF 12.00 [309]. TO ALLOW SPACE FOR THE ANCHOR BOLTS.
- A MINIMUM OF 36.00 [914] IS NECESSARY ON THE RIGHT END FACING THE FRONT OF THE LINE-UP. THIS SPACE IS NECESSARY FOR DOOR CLEARANCE WHEN REMOVING THE CIRCUIT BREAKERS.



REV. TO SHEET	ECN NO.	BY	APP.	DATE
A	265966	NS	JPB	03/09/17
	SEE ECN			
	263110	NS	JPB	09/14/16
	ISSUE			
PROJECT NAME:				
OUTLINE		TYPE 3R NON WALK-IN		
ASCO 7000 SERIES MEDIUM VOLTAGE BYPASS TRANSFER SYSTEMS				
5 - 15 kV, 1200 AMPS, 3PH/3W ACC.136A/A4(INFRARED PORT)				
DRAWN BY	DATE	MANUFACTURING TOLERANCES TO BE IN ACCORDANCE WITH ASCO PROCEDURE MP-1-003. FOR PLASTIC PARTS SEE MP-1-005	ASSEM. REF. NO.	COMPUTER GENERATED DRAWING
NS	09/14/16			SCALE NONE SIZE DS
CHECKED	DATE	PROPERTY OF ASCO POWER TECHNOLOGIES. USE PERMITTED FOR OUR WORK ONLY. ALL RIGHTS OF DESIGN OR INVENTION ARE RESERVED.		DWG. NO.
JPB	09/14/16			1138697-001
PROJECT APPROVAL				DRAWING A
				ECN NO. 265966 SHEET 2 OF 2
FINAL APPROVAL				