

OUTLINE FOR ASCO® 300 SERIES 1000-2000 AMPERE "G" FRAME (3ATS, 3NTS 3ADTS, 3NDTS) FRONT CONNECTED TRANSFER SWITCHES OPEN TYPE

GENERAL NOTES

1. THE STANDARD SWITCH CONFIGURATION IS FOR TOP EMERGENCY & LOAD AND BOTTOM NORMAL. OPTIONALLY, THE SWITCH MAY BE SUPPLIED WITH REVERSE SOURCES AND/OR BOTTOM LOAD. (REFER TO THE WIRING DIAGRAM FURNISHED WITH EACH TRANSFER SWITCH TO DETERMINE TERMINATION POSITIONS).
2. NEUTRAL CONFIGURATIONS:
AN FULL RATED NEUTRAL CONFIGURATION FOR EACH SOURCE AND THE LOAD MAY BE PROVIDED. WHEN EQUIPPED IT IS IN ONE OF THE FOLLOWING FORMATS AS SPECIFIED BY THE CATALOG NUMBER NO. NEUTRAL TYPE:
(A) SOLID (COPPER BUS) NEUTRAL (STANDARD)
(B) SWITCHED NEUTRAL POLE (OPTIONAL)
3. THE STANDARD MECHANICAL (SCREW TYPE) AL/CU TERMINAL LUGS ARE SHOWN FOR REFERENCE.
4. SWITCH NEUTRAL POLE IS SHOWN FOR REFERENCE.
5. WHEN INSTALLING CONDUCTORS, CONNECT TO SIMILARLY MARKED PHASES OF NORMAL, EMERGENCY & LOAD.
6. ALL INTERNAL CONNECTIONS ARE MADE AT FACTORY.
7. MAINTAIN ELECTRICAL CLEARANCE OF 1 INCH (25.4 mm) BETWEEN LIVE METAL PARTS AND GROUNDED METAL.
8. WHEN MOUNTING THE TRANSFER SWITCH IN THE ENCLOSURE, THE CONTROL PANEL(S) AND OPERATOR CONTROLS SHOULD BE MOUNTED ON THE INSIDE, REAR SURFACE OF THE DOOR. 6 IN. MIN. DEPTH TO TRANSFER SWITCH FOR CONTROLS IS REQUIRED.
9. THE CONTROL PANEL(S) IS CONNECTED TO THE TRANSFER SWITCH BY A HARNESS WITH A QUICK DISCONNECT PLUG(S). THE HARNESS EXITS THE TRANSFER SWITCH ON THE RIGHT SIDE. CONSULT FACTORY FOR EXTENSION HARNESSES.
10. OPTIONAL ACCESSORY ADD-ON PANELS.
11. FOR TYPE 1 ENCLOSURE SEE DETAIL A -1 AND DETAIL B -1 FOR CUTOUT DATA.
FOR TYPE 3R, 4, & 12 ENCLOSURE SEE DETAIL A -2 & DETAIL B -2 FOR CUTOUT DATA. GASKETS AND BEZELS ARE PROVIDED FOR TYPE 3R, 4, & 12 ENCLOSURE.
12. CUSTOMER TERMINAL BLOCKS (SEE SHEET 2):
FOR 3ATS, 3NTS, 3ADTS AND 3NDTS THE TB WILL BE MOUNTED ON THE TRANSFER SWITCH.

SIZE	CABLE ACCOMMODATIONS (PER PHASE & NEUTRAL)
1000-1200	SCREW TYPE (STANDARD)- (4) 1/0 - 750 MCM AL/CU
1600-2000	SCREW TYPE (STANDARD)- (6) 1/0 - 750 MCM AL/CU

NOTE : CONSULT FACTORY FOR OTHER CABLING & TERMINATION REQUIREMENTS.

APPROXIMATE SHIPPING WEIGHT, LBS (KG)			APPROXIMATE SHIPPING WEIGHT, LBS (KG)		
AMP SIZE	POLES	WEIGHT	AMP SIZE	POLES	WEIGHT
1000 TO 1200	2	175 (80)	1600 TO 2000	2	505 (229)
	B2	205 (94)		B2	555 (252)
	3	205 (94)		3	555 (252)
	B3	235 (108)		B3	605 (274)

AMP SIZE	DIMENSIONS									
	A	B	C	D	E	F	G	H	J	K
1000 & 1200	33.27 845.1	28.00 711.2	24.00 609.6	31.75 806.5	4.88 124.0	8.56 217.4	6.03 153.2	0.63 15.88	1.75 44.45	1.31 33.3
1600 & 2000	33.27 845.1	28.00 711.2	24.00 609.6	31.75 806.5	4.88 124.0	8.56 217.4	6.03 153.2	0.63 15.88	1.75 44.45	1.31 33.3

AMP SIZE	DIMENSIONS									
	L	M	N	P	Q	R	S	T	U	V
1000 & 1200	1.37 34.80	—	6.50 165.1	2.18 55.37	0.91 23.11	2.43 61.7	18.34 465.8	42.3 1074.4	34.58 878.3	8.40 213.4
1600 & 2000	1.37 34.80	—	6.50 165.1	2.18 55.37	0.91 23.11	2.43 61.7	18.34 465.8	42.96 1091.2	34.58 878.3	8.40 213.4

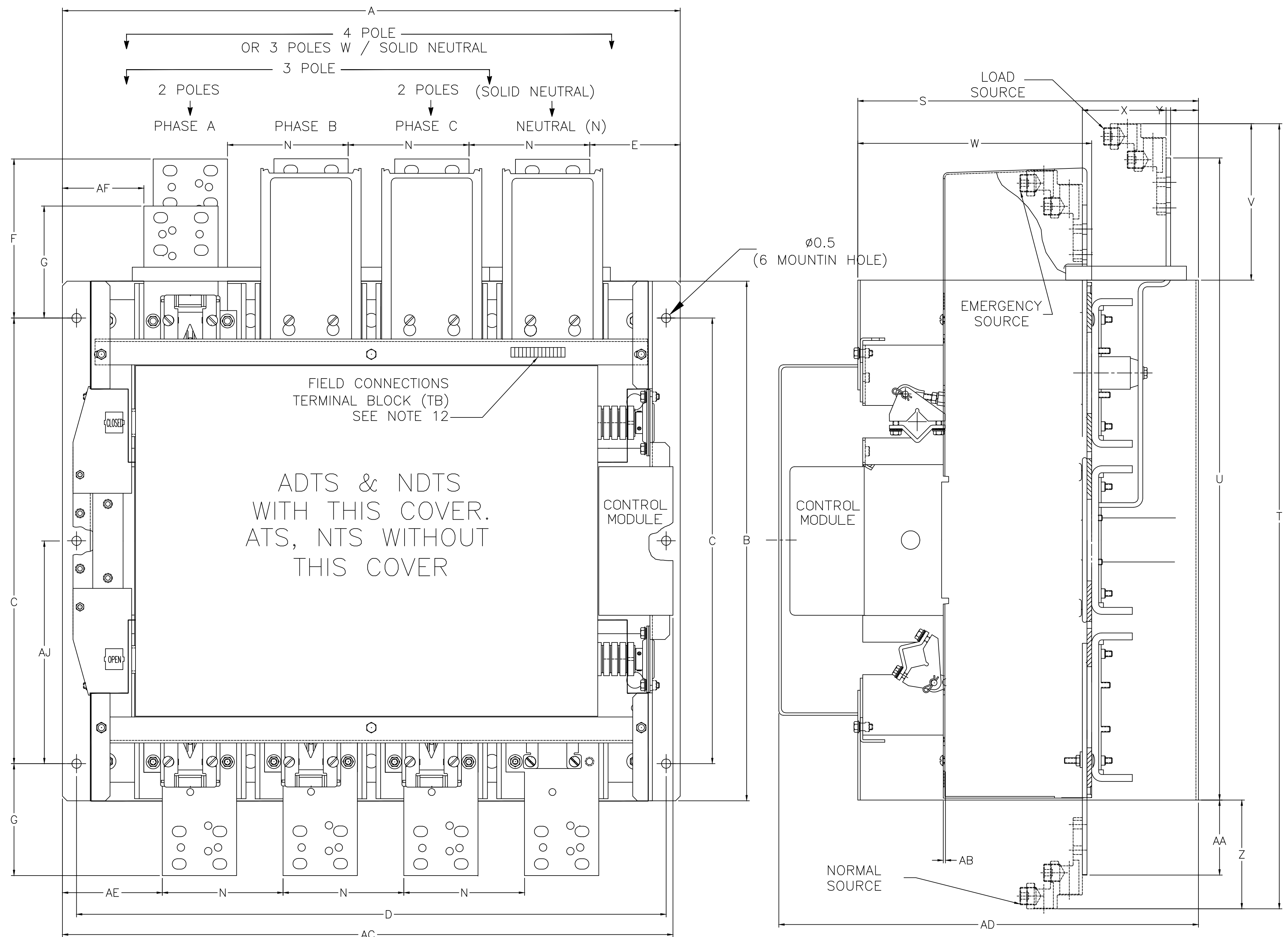
AMP SIZE	DIMENSIONS									
	W	X	Y	Z	AA	AB	AC	AD	AE	AF
1000 & 1200	12.5 317.5	4.50 114.3	1.50 38.1	5.90 150.0	4.04 102.6	0.112 2.85	33.00 838.2	22.25 565.2	5.35 135.9	4.36 111.6
1600 & 2000	12.5 317.5	4.50 114.3	1.25 31.75	6.22 158.0	4.04 102.6	0.112 2.85	33.00 838.2	22.25 565.2	5.35 135.9	4.36 111.6

AMP SIZE	DIMENSIONS		
	AG	AH	AJ
1000 & 1200	—	—	12.00 304.8
1600 & 2000	1.50 38.10	2.00 50.8	12.00 304.8

MINIMUM REQUIRED ENCLOSURE SIZE INCH (mm)

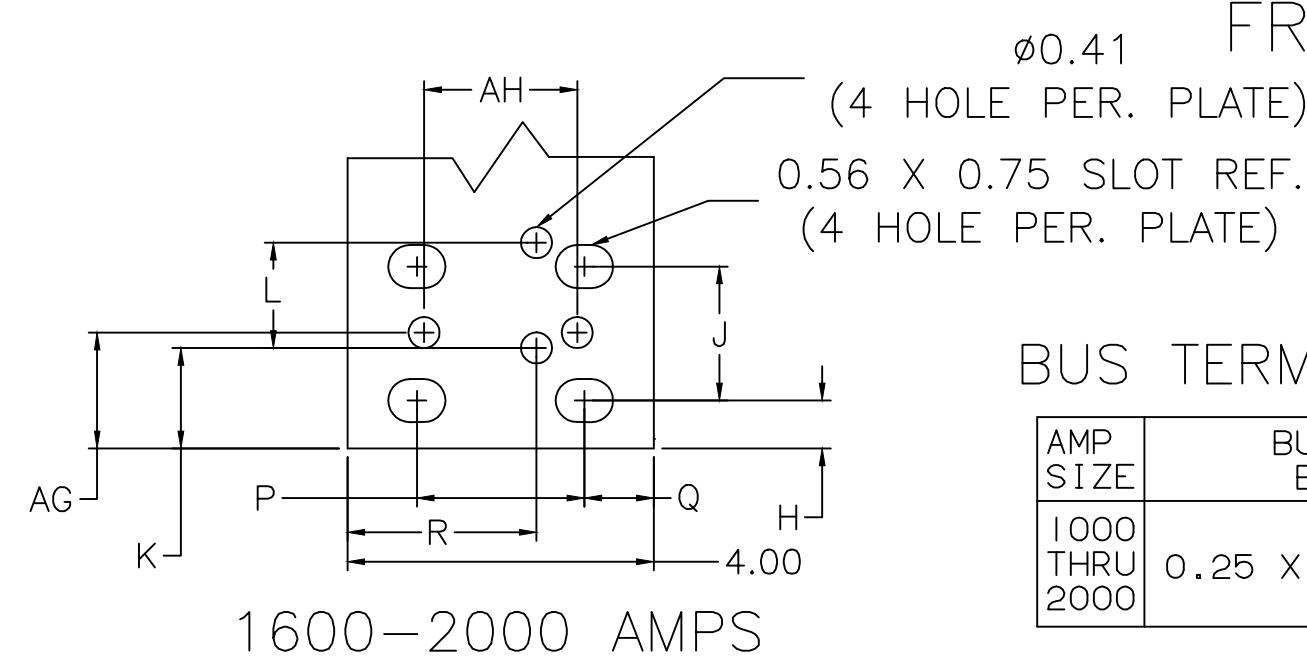
SWITCH RATING (AMPS)	HEIGHT	WIDTH	DEPTH
1000 & 2000	87 (2210)	38 (965)	25 (635)

NOTE: "2000 AMPS" NEEDS VENTILATION TOP AND BOTTOM.



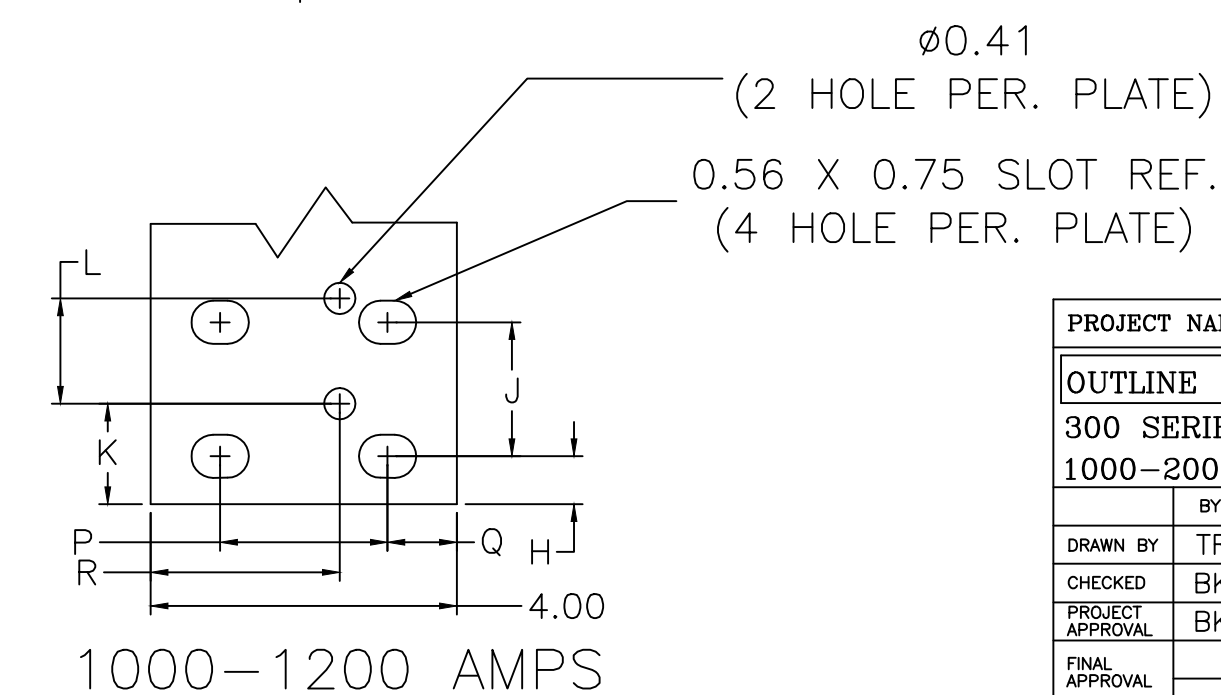
FRONT VIEW

SIDE VIEW



BUS TERMINATION DETAIL (TYP.)

AMP SIZE	BUS BAR PER PHASE BOLTING SURFACE
1000 THRU 2000	0.25 X 4.00 IN. 6.4 X 101.6 MM

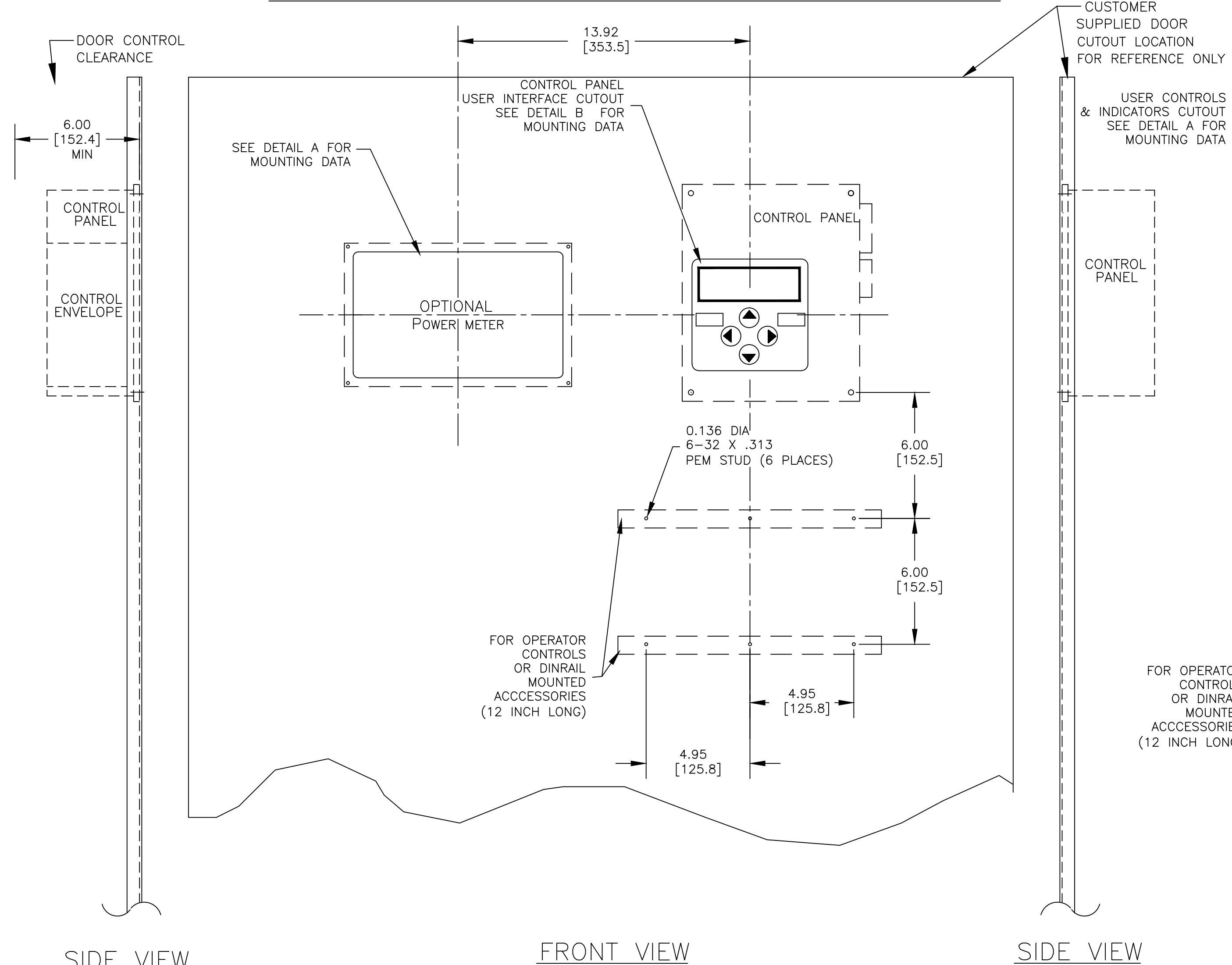


1000-1200 AMPS

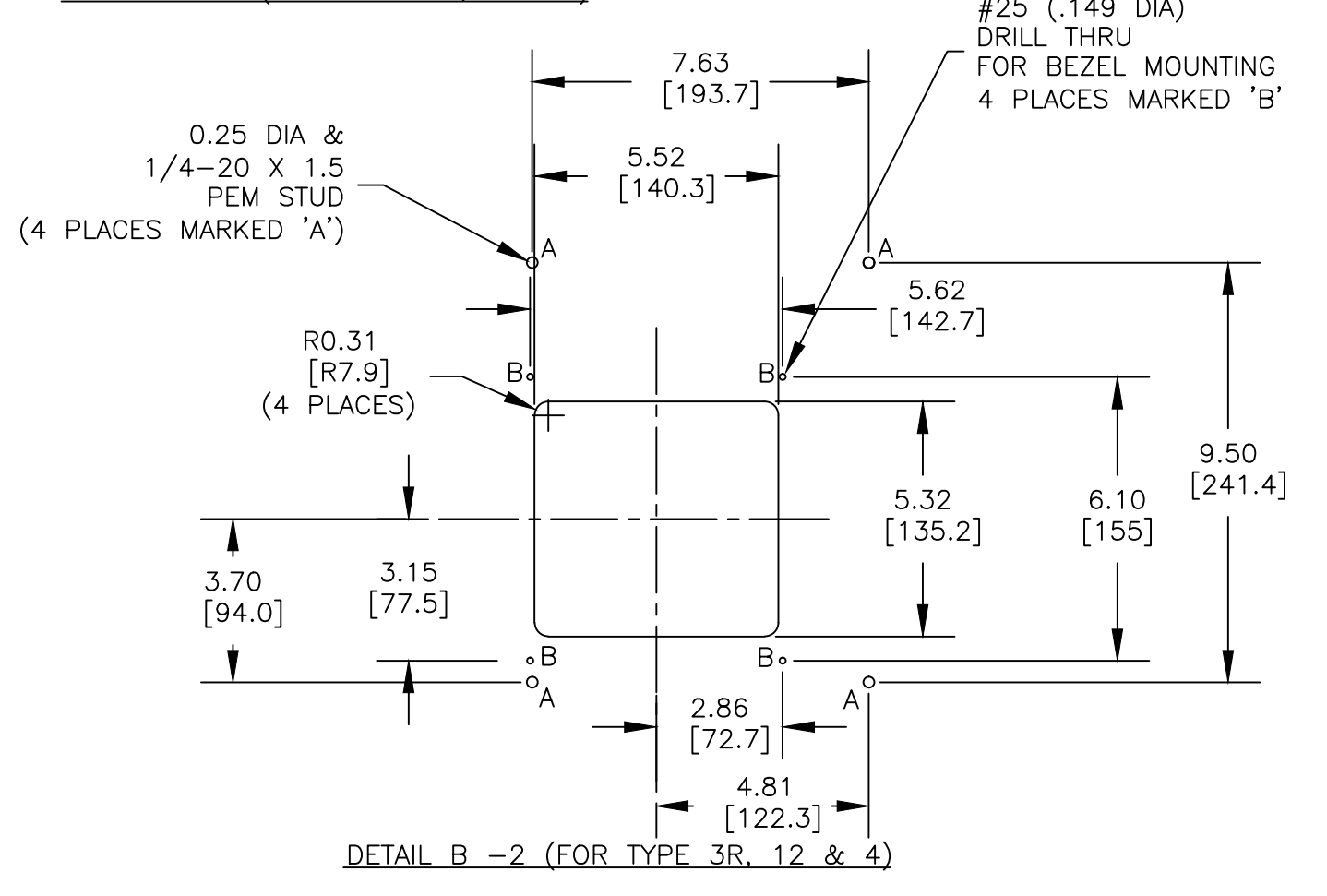
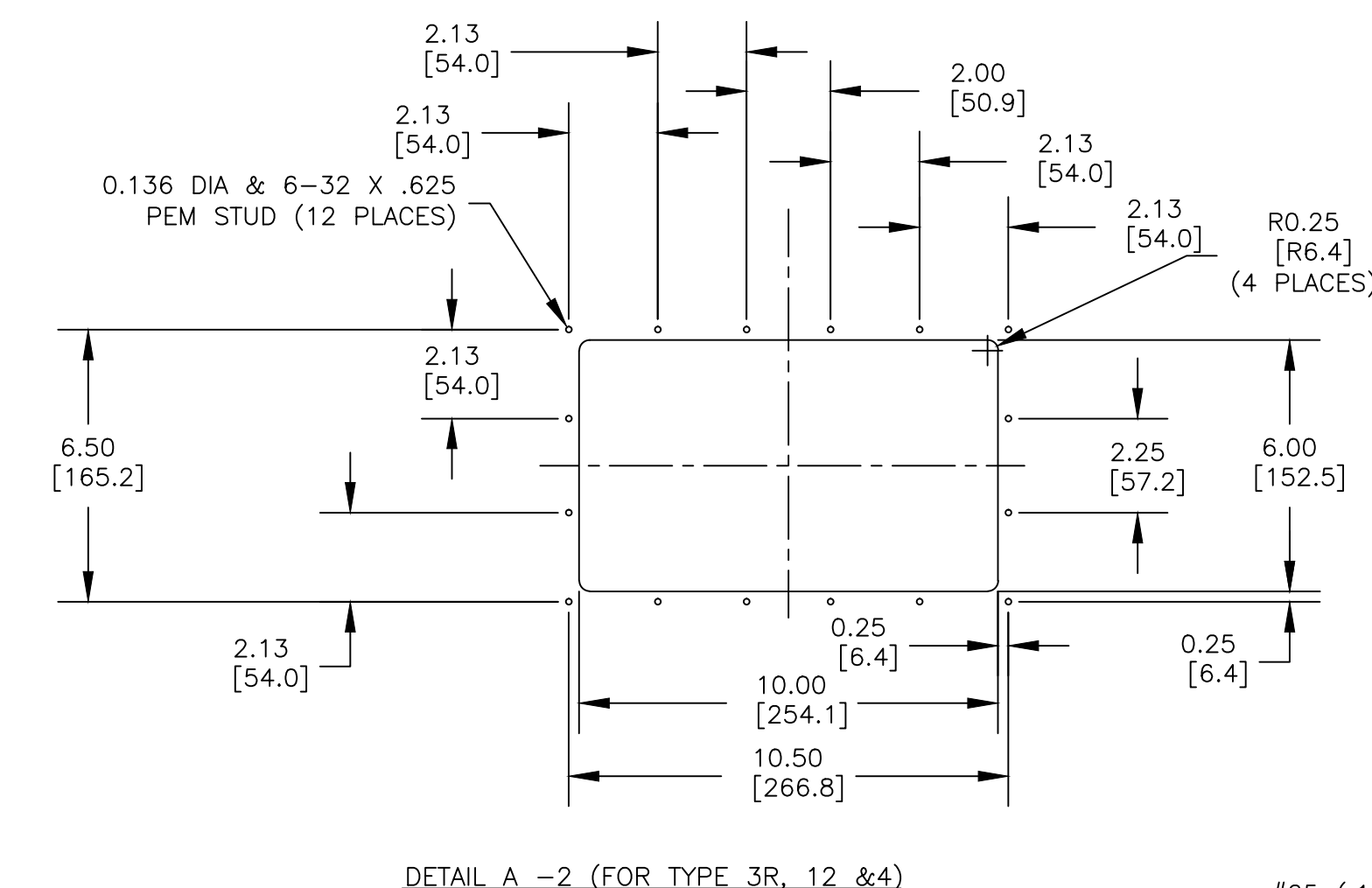
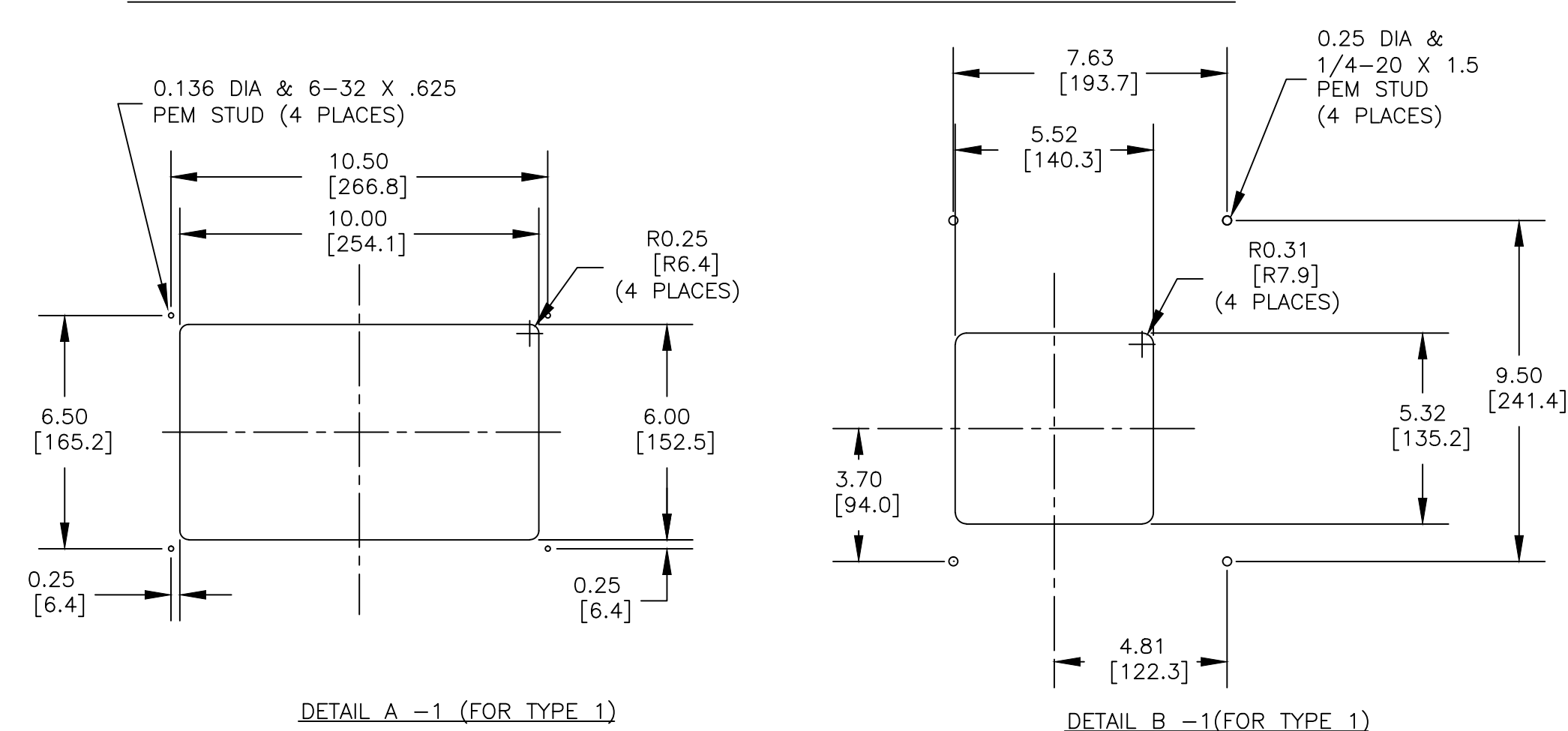
PROJECT NAME:		245977	TR	BK	12/24/13
REV. TO SHEET	ISSUE	ECN NO.	BY	APP.	DATE
OUTLINE 300 SERIES TS "G" 1000-2000 AMPS OPEN TYPE					
DRAWN BY	TR	DATE	12/24/13	ASSEM. REF. NO.	COMPUTER GENERATED DRAWING
CHECKED	BK	DATE	12/24/13	SCALE	1:1 SIZE DS
PROJECT APPROVAL	BK	DATE	12/24/13	PROPERTY OF ASCO POWER TECHNOLOGIES, USE PERMITTED FOR OUR WORK ONLY. ALL RIGHTS OF DESIGN OR INVENTION ARE RESERVED.	DWG. NO. 1001395-004
FINAL APPROVAL				ASCO POWER TECHNOLOGIES, L.P. FLORHAM PARK, NEW JERSEY 07932 U.S.A.	DRAWING - ECN NO. 245977 SHEET 1 OF 2

OUTLINE FOR ASCO® 300 SERIES 1000-2000 AMPERE "G" FRAME (3ATS, 3NTS, 3ADTS, 3NDTS) FRONT CONNECTED TRANSFER SWITCHES OPEN TYPE

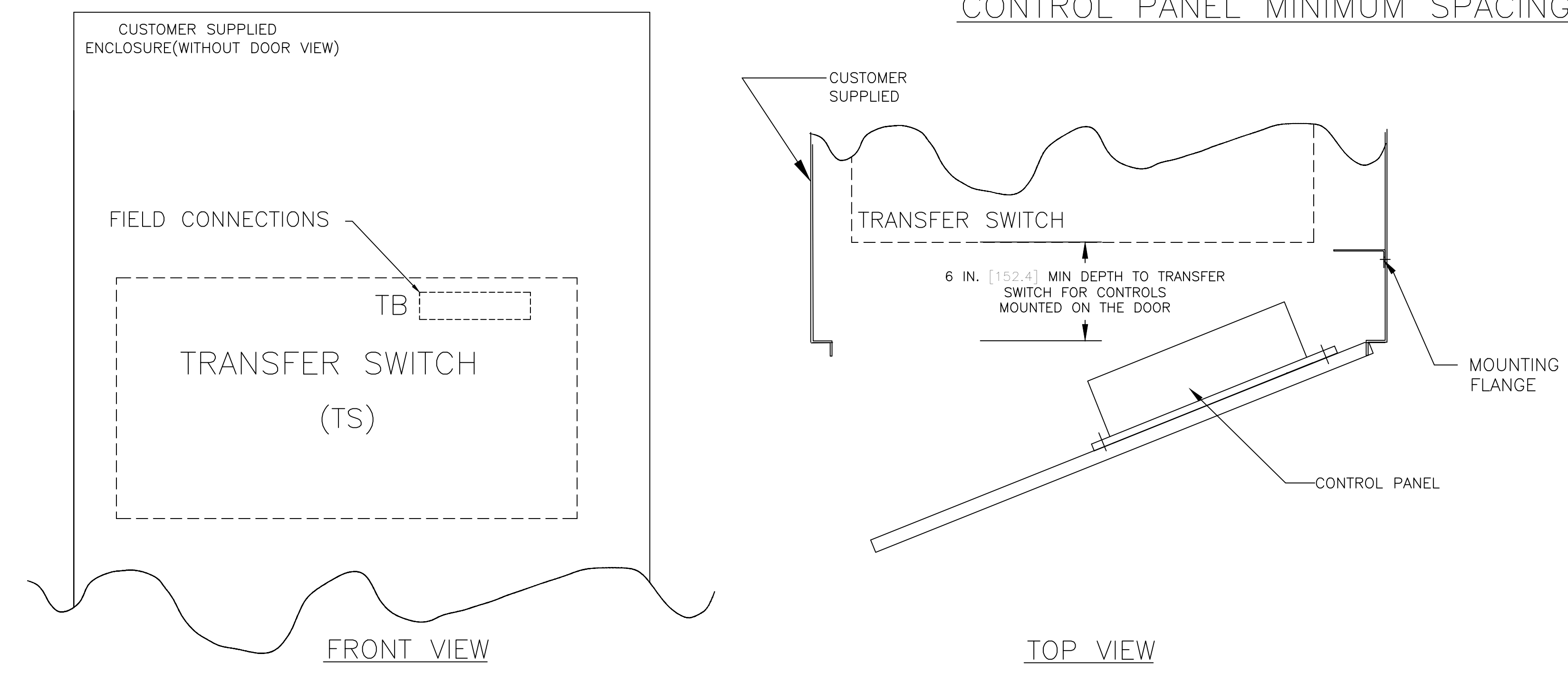
CONTROL PANEL & POWER METER MOUNTING



CONTROL PANEL & POWER METER DATA



CONTROL PANEL MINIMUM SPACING REQUIRED



PROJECT NAME:		245977	TR	BK	12/24/13
REV. TO SHEET	ISSUE	ECN NO.	BY	APP.	DATE
OUTLINE 300 SERIES TS "G" 1000-2000 AMPS OPEN TYPE					
DRAWN BY	TR	DATE	12/24/13	MANUFACTURING TOLERANCES TO BE IN ACCORDANCE WITH ASCO PROCEDURE MP-1-003. FOR PLASTIC PARTS SEE MP-1-005.	ASSEM. REF. NO.
CHECKED	BK	DATE	12/24/13	PROPERTY OF ASCO POWER TECHNOLOGIES. USE PERMITTED FOR OUR WORK ONLY. ALL RIGHTS OF DESIGN OR INVENTION ARE RESERVED.	SCALE
PROJECT APPROVAL	BK	DATE	12/24/13		SIZE
FINAL APPROVAL					DS
			COMPUTER GENERATED DRAWING DWG. NO. 1001395-004 DRAWING - ECN 245977 SHEET 2 OF 2		

