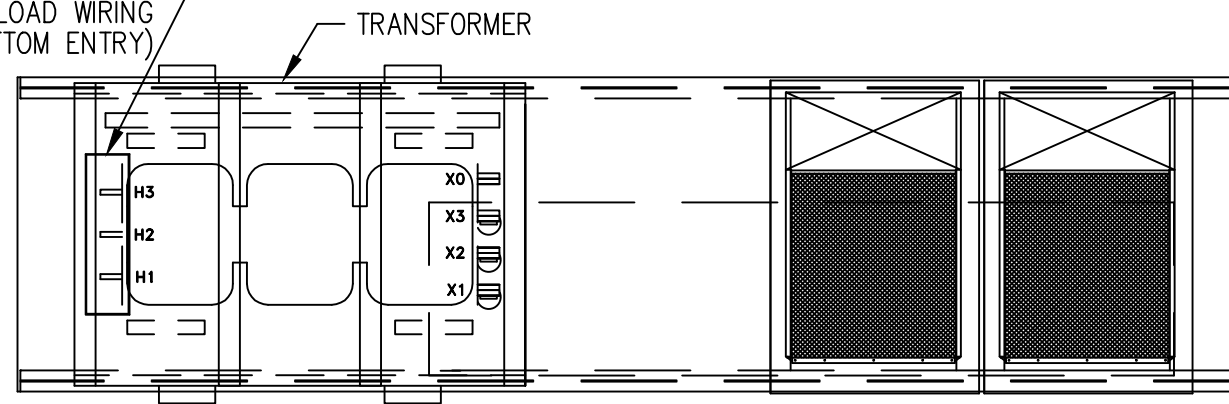
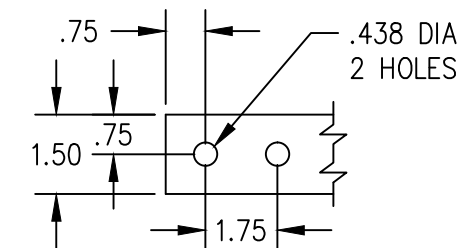
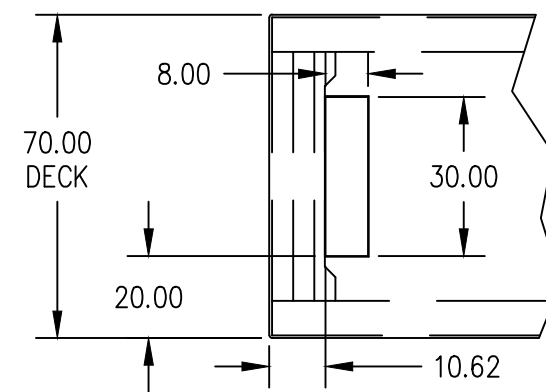


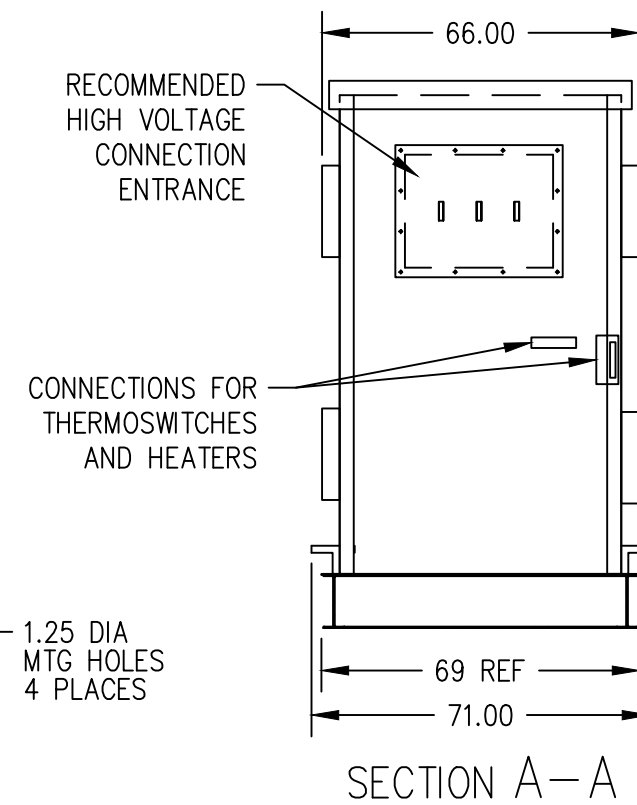
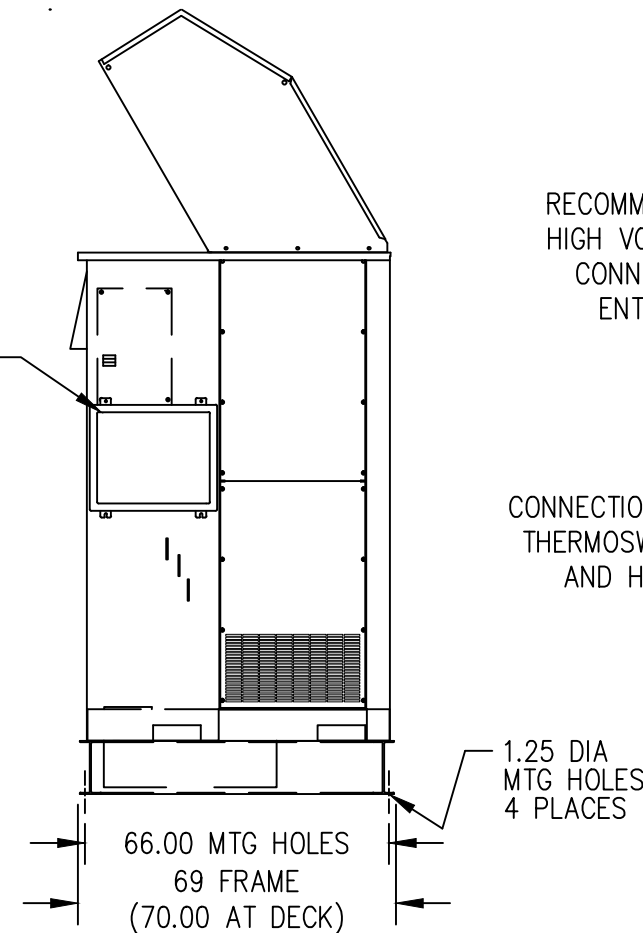
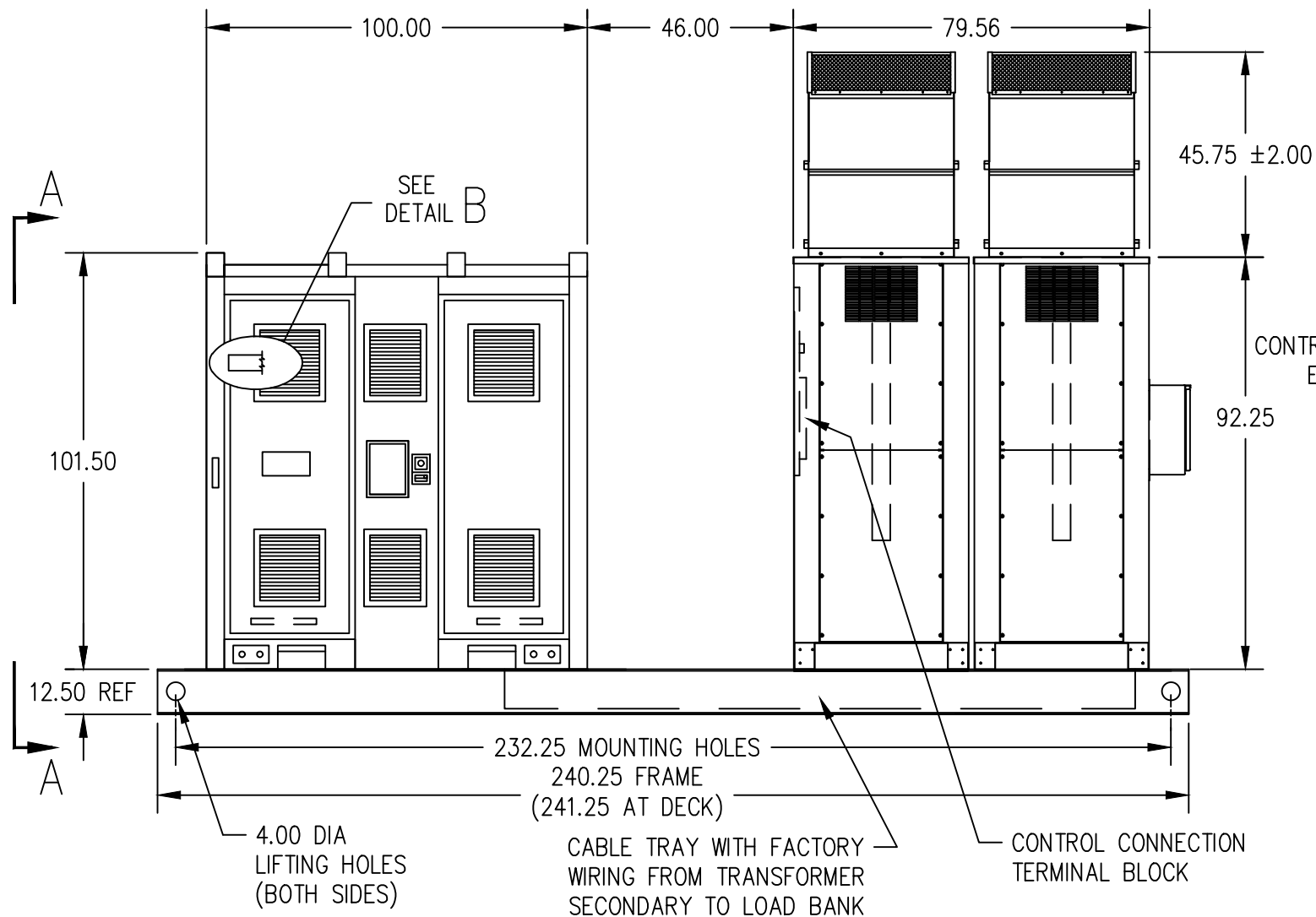
SEE DETAIL C
FOR CUSTOMER LOAD WIRING
(IF BOTTOM ENTRY)



DETAIL C



HV TERMINALS
.25 X 1.50 ALUMINUM
DETAIL B
LINE CONNECTIONS



2. ALL DIMENSIONS ARE APPROX.
1. WEIGHT: 19,000 LBS APPROX

PLEASE NOTE: SAMPLE ONLY.
APPROX. DIMENSIONS AND WEIGHT SHOWN FOR 2 BAY UNIT.
UNIT DIMENSIONS AND WEIGHT ARE KVA DEPENDENT.
OTHER RATED UNITS AVAILABLE. CONSULT FACTORY.

ASCO Power Technologies®

MEDIUM VOLTAGE LOAD BANK - TWO BAY UNIT
GENERAL REFERENCE OUTLINE DRAWING

Model 9820

Rev. -