

TRANSFORMER ELECTRICAL DATA	
Rated power kVA	2500
Temporary overload power at AF kVA	3500
Rated primary voltage kV	11
Rated primary insulation level KV	12
Tapping ranges on HV side(off load)	(+2 ~ -2)x2.5%
HV Applied voltage to industrial frequency kV	35
Impulse B.I.L kV	95
Rated secondary voltage V	433
LV Applied voltage to Industrial frequency kV	3
Rated frequency HZ	50
Rated impedance voltage at 75°C %	6
No-load current %	1.09
No-load losses W	4200
Load losses at 75°C W	18500
Vector group	Dyn11

TRANSFORMER MECHANICAL DATA	
Primary Winding	Aluminium
Secondary Winding	Aluminium
Cooling method (AN/AF)	AN/AF
Acoustic power LwA at 1m dB	71.5
Rated winding temperature rise K	100
Thermal class	F
Environmental behaviour	E2, C2, F
Transformer weight (winding & core) kg	5080

TRANSFORMER ACCESSORIES	
Type of temperature control (240Vac)	BWDK320
Temperature sensors	PT100

Notes:

[1] Quantity : According to the contract

[2] If cooling method AN. The fans and parameters of AF would not provided.

LEGEND	
Item	Material Description
1	Secondary connection busbar
2	Lifting holes
3	Primary connection terminal
4	Earthing terminals #14
5	HV tapping
6	Neutral connection bar
7	Transformer name plate
8	Transformer mounting base
9	Fans

0	ISSUED FOR APPROVAL	David 07-10-2018	FS Meng 07-10-2018	GH4 07-11-2018	
REV	DESCRIPTION	ISSUED SIGN DATE	VERIFIED SIGN DATE	APPROVED SIGN DATE	
CO-ORDINATE SYSTEM:	HEIGHT DATUM:	SCALE: NOT TO SCALE			

This document and any information or descriptive matter set out in are confidential and copyright property and must not be disclosed, loaned, copied or used for any purpose whatsoever without prior written permission from Schneider Electric.

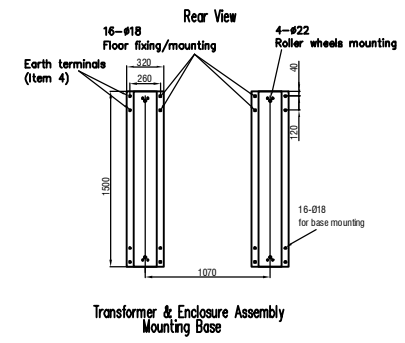
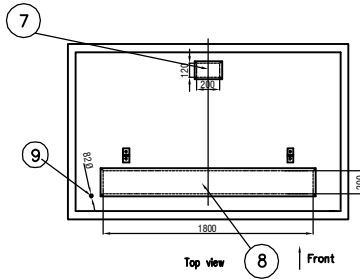
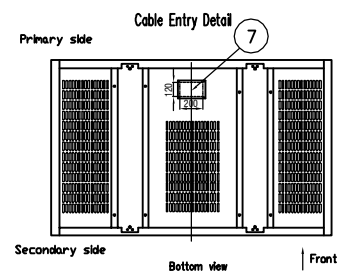
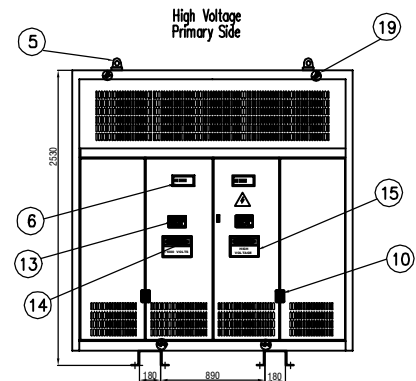
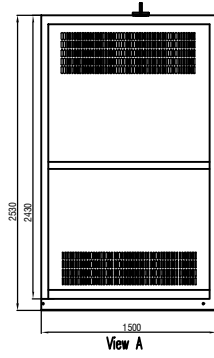
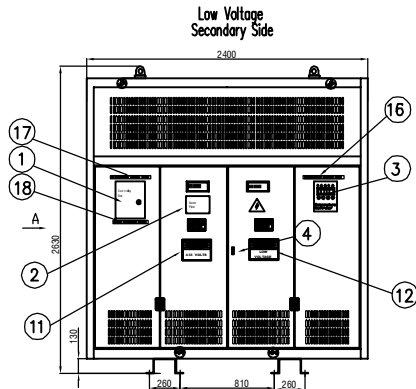
Schneider
Electric

Ecostrux
Innovation At Every Level

DRAWN	David	07.10.20
DESIGNED	David	07.10.20
DRG CHECK	MFS	07.10.20
DESIGN CHECK	MFS	07.10.20
APPROVED	GHL	07.11.20

TRIAL TRANSFORMER
MEDIUM VOLTAGE SUBSTATIONS
11KV/433V TRANSFORMER 2500KV
GENERAL ARRANGEMENT & ELECTRICAL RATINGS

018	FILE No.	SHEET: 1 OF 5	A1
018	STATUS: ISSUED FOR APPROVAL		
018	DRG No.	SALES ORDER No.	
	E250041010	0	



LEGEND	
Item	Material Description
1	Controlling box
2	Transformer nameplate
3	Temperature controlling unit (TCU)
4	Door lock
5	Lifting points (ears)
6	Viewing windows
7	HV gland plate (4mm aluminum plate)
8	LV gland plate (4mm aluminum plate)
9	Auxiliary LV entry for external control wiring
10	Hinged doors

LEGEND	
Item	Material Description
11	Danger-secondary voltage label/sign
12	Danger-secondary voltage label/sign
13	Danger-keep out label/sign
14	Danger-primary voltage label/sign
15	Danger-primary voltage label/sign
16	Device label
17	Auxiliary equipment label
18	Auxiliary warning label
20	Lift point sticker
21	

ENCLOSURE MECHANICAL DATA	
Item	Material Description
1	Protection level: IP31
2	Color: RAL7032
3	Enclosure weight: 500kg

Notes:

[1] Top lifting points (ears) for lifting/removing the enclosure only. Do not use the top lifting points if enclosure is still fixed to the transformer mounting base frame.

[2] Bottom lifting points for lifting the transformer and enclosure as one completed unit. Fork-lift recommended, refer transformer and enclosure weight to determine the lifting requirement.

[3] Quantity : According to the contract

REV	DESCRIPTION	DATE	BY	CHKD	APPD
0	ISSUED FOR APPROVAL	07.10.2018	MPS	GHL	
		07.10.2018	MPS	GHL	
		07.10.2018	MPS	GHL	
		07.10.2018	MPS	GHL	
		07.10.2018	MPS	GHL	

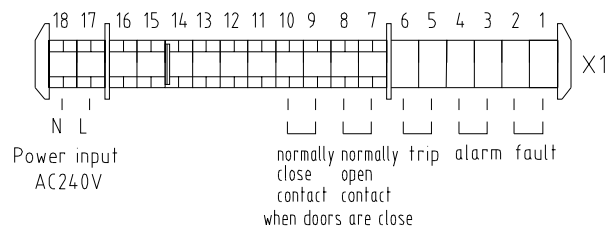
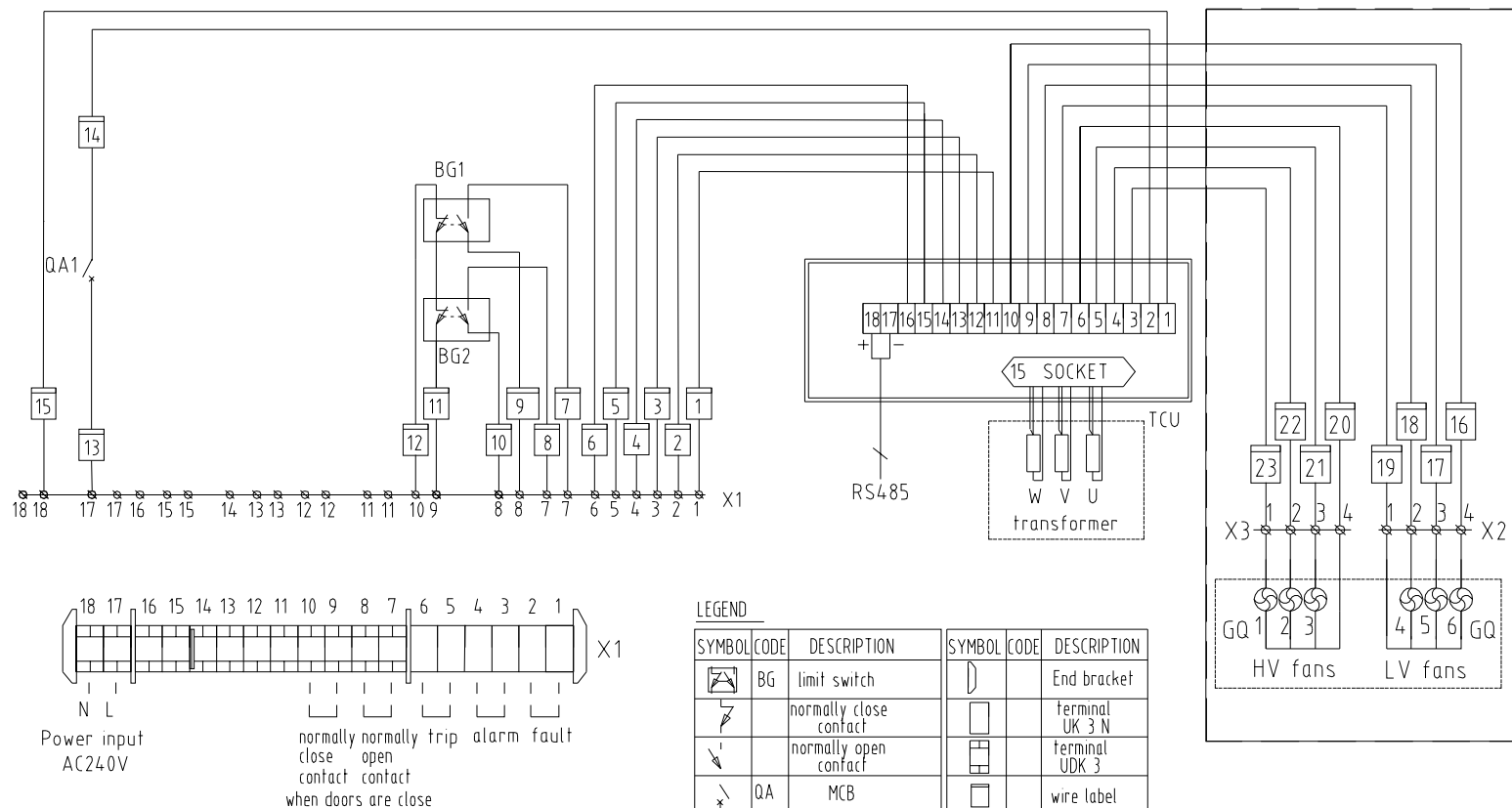
This document and any information or descriptive matter set out in are confidential and copyright property and must not be disclosed, loaned, copied or used for any purpose whatsoever without prior written permission from Schneider Electric.

Schneider Electric

EcoStruxure

Power Distribution

TRIAL TRANSFORMER	
MEDIUM VOLTAGE SUBSTATIONS	
11kV/433V TRANSFORMER 2500kV	
GENERAL ARRANGEMENT & ELECTRICAL RATINGS	
FILE NO.	SHEET 2 OF 5
STATUS	ISSUED FOR APPROVAL
DATE	07.10.2018
PROJECT NO.	P250041010
SCALE	0



Note: 1. TCU terminal 17.18 is optional, and it is not provided when RS232/RS485 communication signals are not required.

2. If cooling method AN. The fans would not be included in the diagram.

LEGEND

SYMBOL	CODE	DESCRIPTION	SYMBOL	CODE	DESCRIPTION
	BG	limit switch			End bracket
		normally close contact			terminal UK 3 N
		normally open contact			terminal UDK 3
	QA	MCB			wire label
	GQ	fan			jumper
		sensor PT100/PTC		TCU	temperature controller
		node			Separating plate TS
		partition plate ATP			

0	ISSUED FOR APPROVAL	David	MFS	GHL
DESIGNER	07.10.2018	07.10.2018	07.11.2018	
VERIFIED	07.10.2018	07.10.2018	07.11.2018	
APPROVED	07.10.2018	07.10.2018	07.11.2018	
CO-ORDINATE SYSTEM:	HEIGHT DATUM:	SCALE:	NOT TO SCALE	

This document and any information or descriptive matter set out in are confidential and copyright property and must not be disclosed, loaned, copied or used for any purpose whatsoever without prior written permission from Schneider Electric.				TRIHAL TRANSFORMER MEDIUM VOLTAGE SUBSTATIONS 11kV/433V TRANSFORMER 2500kV GENERAL ARRANGEMENT & ELECTRICAL RATINGS			
Schneider Electric		DRAWN: David		07.10.2018		SHEET: 3 OF 5	
Ecostruxure		DESIGNED: David		07.10.2018		A1	
		DNG CHECK: MFS		07.10.2018		STATUS: ISSUED FOR APPROVAL	
		DESIGN CHECK: MFS		07.10.2018		DRG No: F250041010	
		APPROVED: GHL		07.11.2018		SALES ORDER No:	

[illegible]