
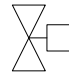



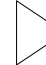


ACSC100-101 - In Row SC, Air Cooled, Self Contained.

Sheet No.	Component /Detail	Description
1	Draw ing Guide	ACSC100-101,200-240V 50 Hz & 60 Hz, Air Cooled, Draw ing guide.
2	Isometric External View	ACSC100-101,200-240V 50 Hz & 60 Hz, Air Cooled, Isometric External View .
3	General Arrangement	ACSC100-101,200-240V 50 Hz & 60 Hz, Air Cooled, General Arrangement.
4	Top & Bottom View	ACSC100-101,200-240V 50 Hz & 60 Hz, Air Cooled, Top & Bottom View
5	Anchoring Details	ACSC100-101,200-240V 50 Hz & 60 Hz, Air Cooled, Anchoring Details.
6	Ceiling Tile Kit Details	ACSC100-101,200-240V 50 Hz & 60 Hz, Air Cooled, Ceiling Tile Kit Details.
7	Isometric Internal View	ACSC100-101,200-240V 50 Hz & 60 Hz, Air Cooled, Isometric Internal View .
8	Internal View	ACSC100-101,200-240V 50 Hz & 60 Hz, Air Cooled, Internal View .
9	Internal Piping	ACSC100-101,200-240V 50 Hz & 60 Hz, Air Cooled, Internal Piping.
10	Pow er Card Connection Details	ACSC100-101,200-240V 50 Hz & 60 Hz, Air Cooled, Pow er Card Connection Details.
11	Control & User Interface	ACSC100-101,200-240V 50 Hz & 60 Hz, Air Cooled, Control & User Interface.

LEGEND			
SYMBOL	DESCRIPTION	SYMBOL	DESCRIPTION
	COMPRESSOR		ELECTRONIC HOT GAS BYPASS VALVE
	REFRIGERENT LIQUID CONTROL DRIER		THERMOSTATIC EXPANSION VALVE
	CONDENSATE PUMP		DISTRIBUTOR

THIS DRAWING AND SPECIFICATIONS HEREIN ARE THE PROPERTY OF SCHNEIDER ELECTRIC AND SHALL NOT BE COPIED, REPRODUCED OR USED IN WHOLE OR IN PART, AS THE BASIS FOR THE MANUFACTURE OR SALE OF ITEMS WITHOUT WRITTEN PERMISSION FROM SCHNEIDER ELECTRIC. THIS DRAWING IS BASED UPON LATEST AVAILABLE INFORMATION AND IS SUBJECT TO CHANGE WITHOUT NOTICE.

Schneider Electric

TITLE: InRow DIRECT EXPANSION
InRow SC, 300mm, AIR COOLED
ACSC100 : 200 - 240V, 60 Hz
ACSC101 : 200 - 240V, 50 Hz
DRAWING GUIDE

DWG NO: ACSC100-101 REV. 0

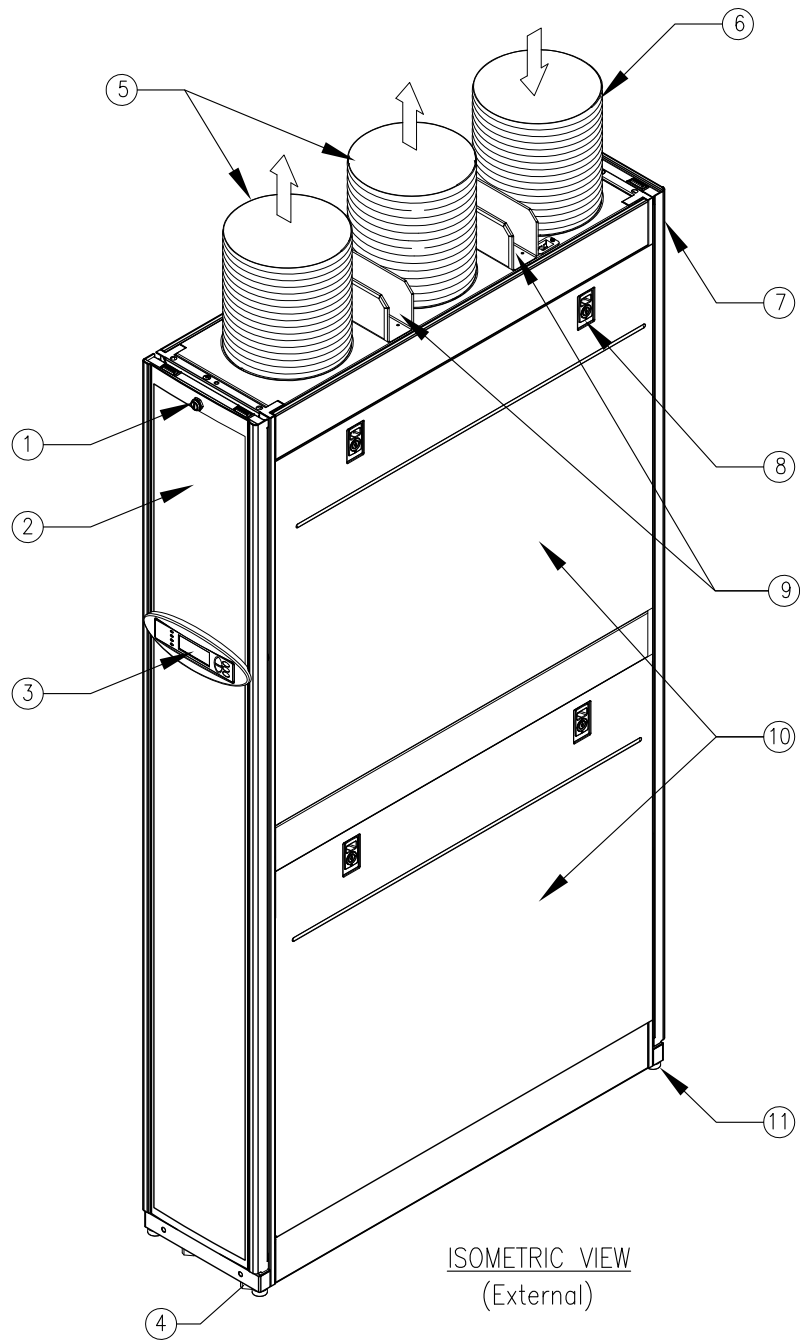
DRAWN: SURAJ P 8-MAR-12 ANGLE

ENGINEER: R.BRAUN/E.KLOSTERMANN 28-MAR-12 PROJECTION: N/A

PROJECT: DRAWINGS SHEET 1 OF 11

APPROVED: C.CUMMISKEY 28-MAR-12

- ① DOOR LOCK
- ② REMOVABLE FRONT DOOR
- ③ DISPLAY INTERFACE
- ④ CASTERS
(FRONT=SWIVELING
REAR=NON-SWIVELING)
- ⑤ EXHAUST AIR DUCTS
- ⑥ INTAKE AIR DUCT
- ⑦ REMOVABLE REAR DOOR
- ⑧ PANEL LATCH LOCK
- ⑨ CABLE TROUGHS (OPTIONAL)
- ⑩ REMOVABLE SIDE PANELS
- ⑪ LEVELING FEET (4-PLACES)



ISOMETRIC VIEW
(External)

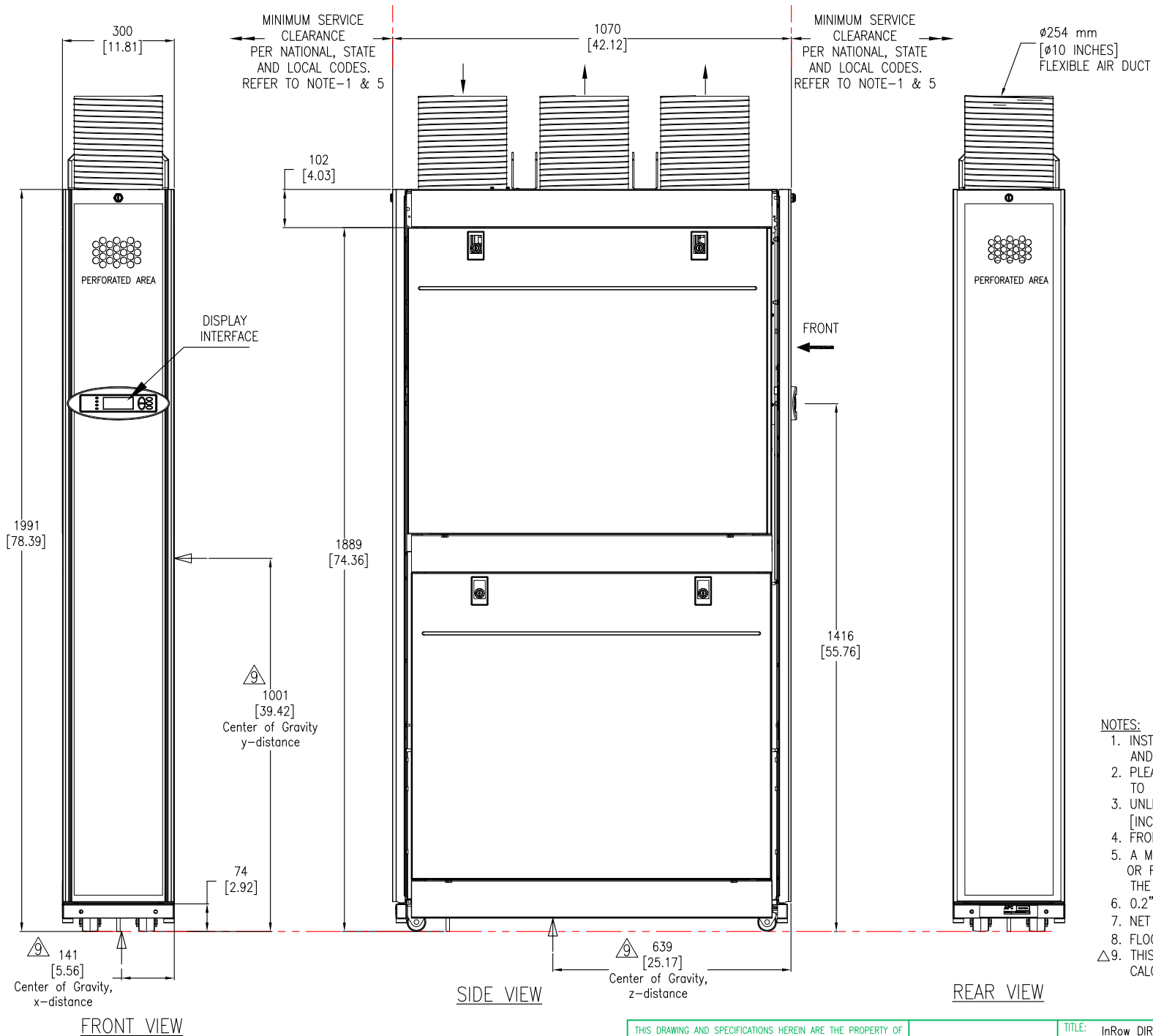
NOTES:
 1. INSTALLATION SHALL COMPLY WITH ALL APPLICABLE NATIONAL, STATE AND LOCAL ELECTRICAL REGULATIONS.
 2. PLEASE REFER TO PRODUCT MANUALS FOR ADDITIONAL DETAILS PRIOR TO INSTALLATION AND SITE PREPARATION WORK.

THIS DRAWING AND SPECIFICATIONS HEREIN ARE THE PROPERTY OF SCHNEIDER ELECTRIC AND SHALL NOT BE COPIED, REPRODUCED OR USED IN WHOLE OR IN PART, AS THE BASIS FOR THE MANUFACTURE OR SALE OF ITEMS WITHOUT WRITTEN PERMISSION FROM SCHNEIDER ELECTRIC. THIS DRAWING IS BASED UPON LATEST AVAILABLE INFORMATION AND IS SUBJECT TO CHANGE WITHOUT NOTICE.



TITLE: InRow DIRECT EXPANSION
 InRow SC, 300mm, AIR COOLED
 ACSC100 : 200 = 240V, 60 Hz
 ACSC101 : 200 = 240V, 50 Hz
 ISOMETRIC EXTERNAL VIEW
 PROJECT: DRAWINGS SHEET 2 OF 11

DWG NO:	ACSC100-101	REV:	0
DRAWN:	SURAJ P	8-MAR-12	ANGLE
ENGINEER:	R.BRAUN/E.KLOSTERMANN	28-MAR-12	PROJECTION:
APPROVED:	C.CUMMISKEY	28-MAR-12	N/A



NOTES:

1. INSTALLATION SHALL COMPLY WITH ALL APPLICABLE NATIONAL, STATE AND LOCAL ELECTRICAL REGULATIONS.
 2. PLEASE REFER TO PRODUCT MANUALS FOR ADDITIONAL DETAILS PRIOR TO INSTALLATION AND SITE PREPARATION WORK.
 3. UNLESS OTHERWISE SPECIFIED, ALL DIMENSIONS ARE IN MILLIMETERS [INCHES].
 4. FRONT AND REAR ACCESS IS REQUIRED FOR SERVICE.
 5. A MINIMUM OF 1200mm [48"] CLEARANCE IS REQUIRED IN FRONT OR REAR OF THE ACSC UNIT IF THE UNIT HAS TO BE REMOVED FROM THE ROW.
 6. 0.2" WC EXTERNAL STATIC PRESSURE DROP IN EXHAUST AIR DUCT.
 7. NET WEIGHT OF UNIT IS 166 kg [365 lb].
 8. FLOOR LOADING: 520 kg/meter² [107 lb/ft²].
- △9. THIS INFORMATION PROVIDED CONSERVATIVE CENTER OF GRAVITY CALCULATION.

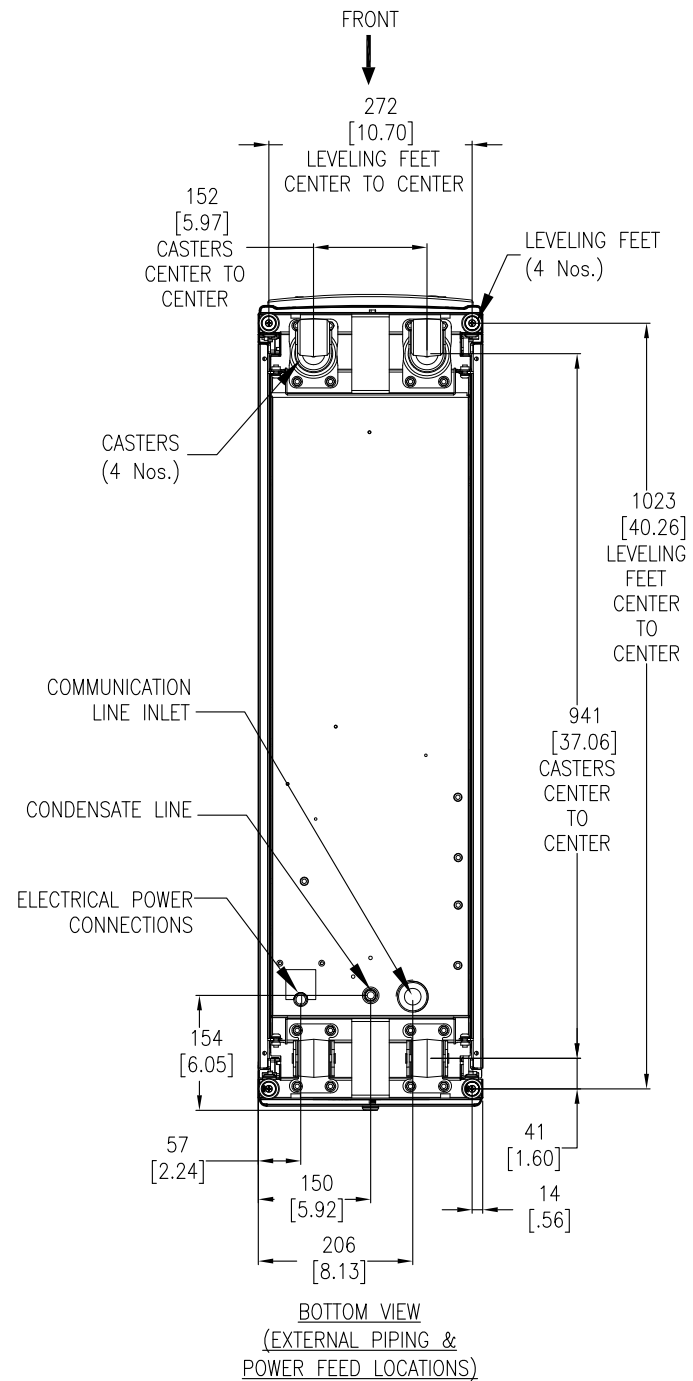
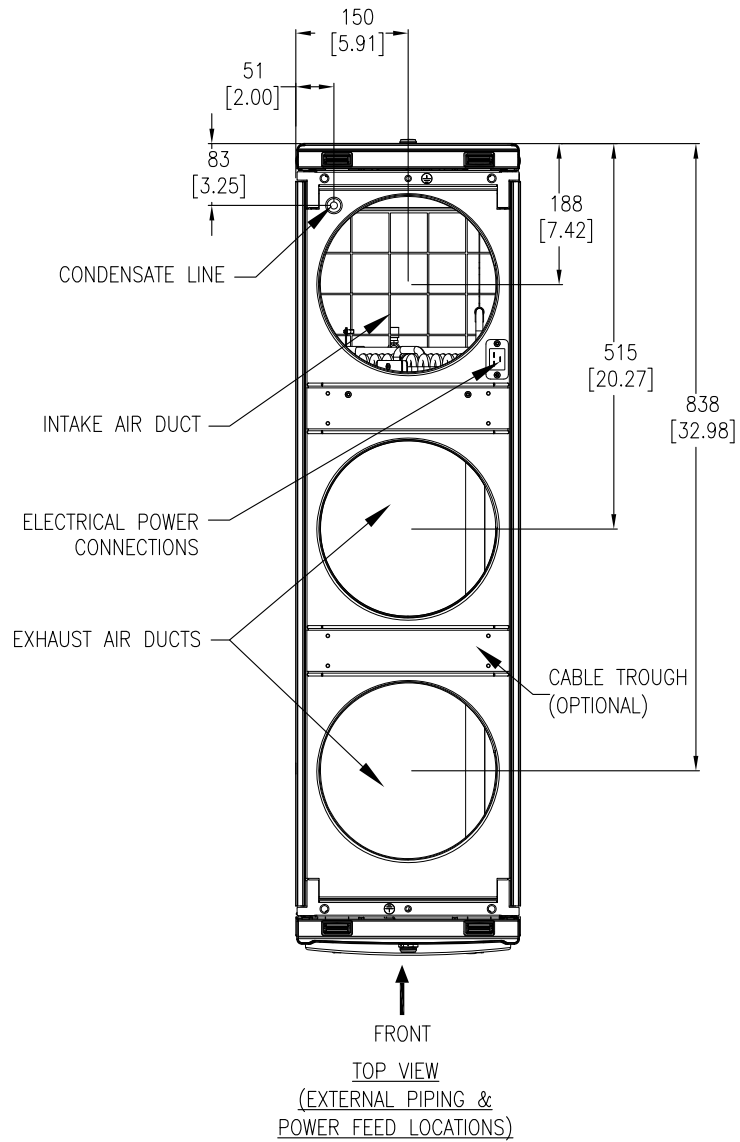
THIS DRAWING AND SPECIFICATIONS HEREIN ARE THE PROPERTY OF SCHNEIDER ELECTRIC AND SHALL NOT BE COPIED, REPRODUCED OR USED IN WHOLE OR IN PART, AS THE BASIS FOR THE MANUFACTURE OR SALE OF ITEMS WITHOUT WRITTEN PERMISSION FROM SCHNEIDER ELECTRIC. THIS DRAWING IS BASED UPON LATEST AVAILABLE INFORMATION AND IS SUBJECT TO CHANGE WITHOUT NOTICE.



TITLE: InRow DIRECT EXPANSION
InRow SC, 300mm, AIR COOLED
ACSC100 : 200 - 240V, 60 Hz
ACSC101 : 200 - 240V, 50 Hz
GENERAL ARRANGEMENT

DWG NO: ACSC100-101 REV. 0

DRAWN: SURAJ P	8-MAR-12	FIRST ANGLE PROJECTION
ENGINEER: R.BRAUN/E.KLOSTERMANN	28-MAR-12	
APPROVED: C.CUMMISKEY	28-MAR-12	



- NOTES:**
1. INSTALLATION SHALL COMPLY WITH ALL APPLICABLE NATIONAL, STATE AND LOCAL ELECTRICAL REGULATIONS.
 2. PLEASE REFER TO PRODUCT MANUALS FOR ADDITIONAL DETAILS PRIOR TO INSTALLATION AND SITE PREPARATION WORK.
 3. UNLESS OTHERWISE SPECIFIED, ALL DIMENSIONS ARE IN MILLIMETERS [INCHES].

THIS DRAWING AND SPECIFICATIONS HEREIN ARE THE PROPERTY OF SCHNEIDER ELECTRIC AND SHALL NOT BE COPIED, REPRODUCED OR USED IN WHOLE OR IN PART, AS THE BASIS FOR THE MANUFACTURE OR SALE OF ITEMS WITHOUT WRITTEN PERMISSION FROM SCHNEIDER ELECTRIC. THIS DRAWING IS BASED UPON LATEST AVAILABLE INFORMATION AND IS SUBJECT TO CHANGE WITHOUT NOTICE.

Schneider Electric

TITLE: InRow DIRECT EXPANSION
InRow SC, 300mm, AIR COOLED
ACSC100 : 200 - 240V, 60 Hz
ACSC101 : 200 - 240V, 50 Hz
TOP VIEW & BOTTOM VIEW

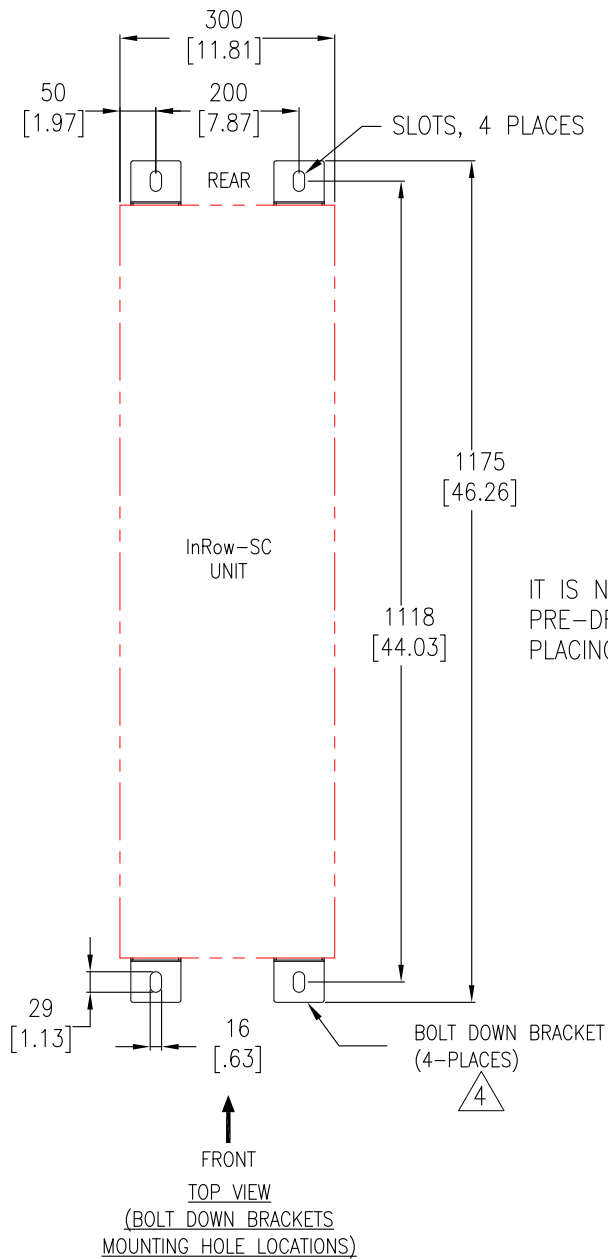
DWG NO: ACSC100-101 REV. 0

DRAWN: SURAJ P 8-MAR-12 FIRST ANGLE PROJECTION

ENGINEER: R.BRAUN/E.KLOSTERMANN 28-MAR-12

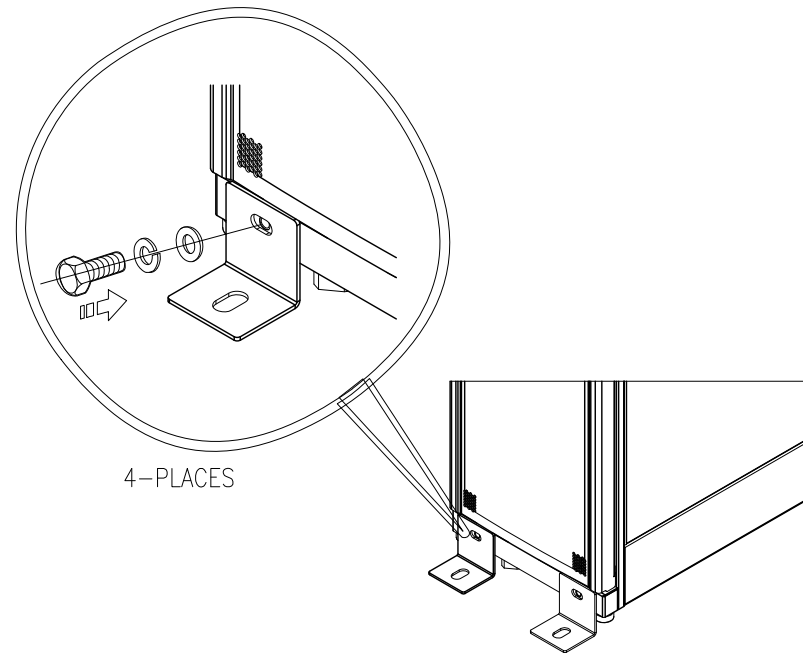
PROJECT: DRAWINGS SHEET 4 OF 11

APPROVED: C.CUMMISKEY 28-MAR-12



IT IS NOT RECOMMENDED TO PRE-DRILL HOLES BEFORE PLACING SC UNITS IN ROW.

STABILIZING THE InRow SC:
TO PREVENT THE ENCLOSURE FROM MOVING FROM ITS FINAL LOCATION (IF NOT JOINED WITH ANOTHER COMPONENT USE AR7701(BOLT-DOWN KIT) ATTACH THE BRACKETS TO THE UNIT AS SHOWN. USE CODE COMPLIANT FASTENERS TO SECURE THE UNIT TO THE FLOOR.



NOTE: RECOMMENDED TORQUE IS 9-11.3 N-m [80-100 LBS-INCHES]

- NOTES:
- 1.INSTALLATION SHALL COMPLY WITH ALL APPLICABLE NATIONAL, STATE AND LOCAL ELECTRICAL REGULATIONS.
 - 2.PLEASE REFER TO PRODUCT MANUALS FOR ADDITIONAL DETAILS PRIOR TO INSTALLATION AND SITE PREPARATION WORK.
 - 3.UNLESS OTHERWISE SPECIFIED, ALL DIMENSIONS ARE IN MILLIMETERS [INCHES].
 - △ 4.BOLT DOWN KIT (#AR7701) IS OPTIONAL AND HAS TO BE ORDERED SEPARATELY.
 - 5.REFER TO "InfraStruXure InRow-SC SEISMIC INSTALLATION GUIDE" FOR ANCHORING DETAILS.

THIS DRAWING AND SPECIFICATIONS HEREIN ARE THE PROPERTY OF SCHNEIDER ELECTRIC AND SHALL NOT BE COPIED, REPRODUCED OR USED IN WHOLE OR IN PART, AS THE BASIS FOR THE MANUFACTURE OR SALE OF ITEMS WITHOUT WRITTEN PERMISSION FROM SCHNEIDER ELECTRIC. THIS DRAWING IS BASED UPON LATEST AVAILABLE INFORMATION AND IS SUBJECT TO CHANGE WITHOUT NOTICE.

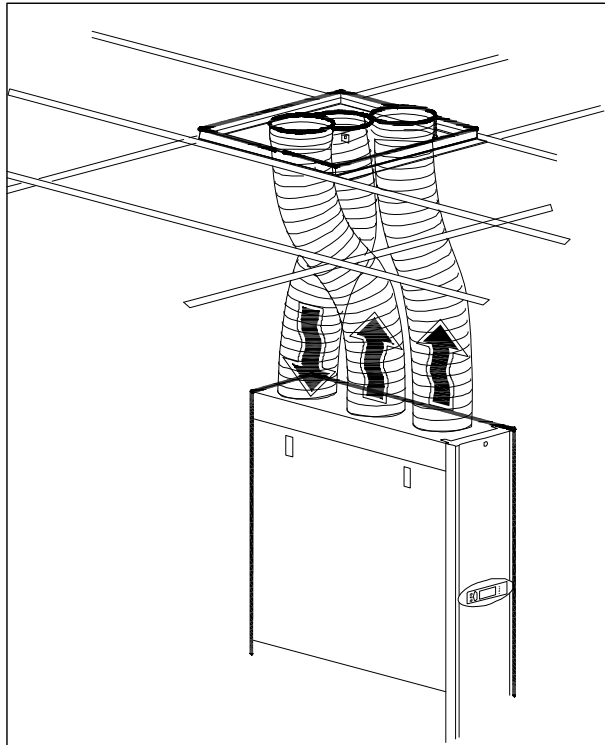
Schneider Electric

TITLE: InRow DIRECT EXPANSION
InRow SC, 300mm, AIR COOLED
ACSC100 : 200 - 240V, 60 Hz
ACSC101 : 200 - 240V, 50 Hz
ANCHORING DETAILS

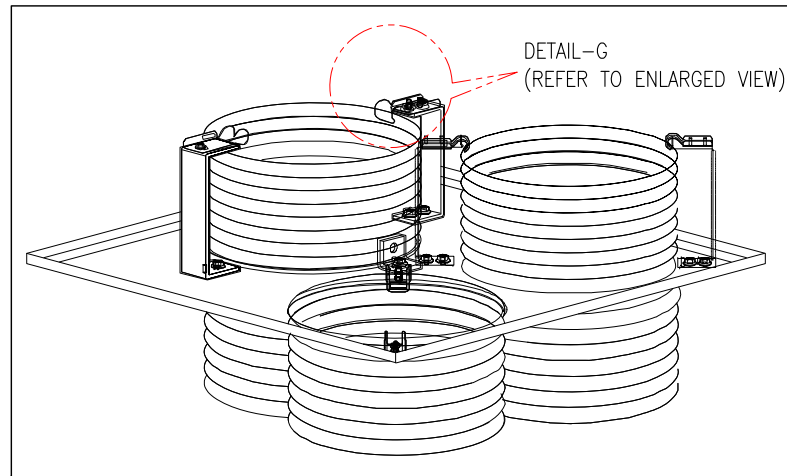
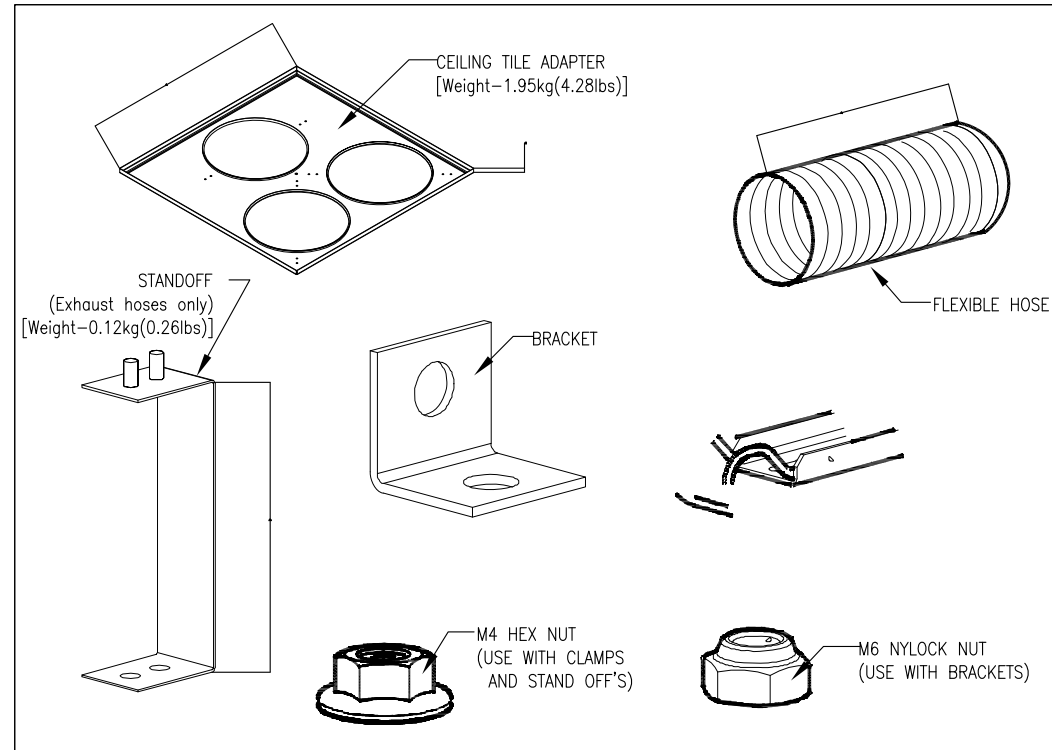
DWG NO:	ACSC100-101	REV:	0
DRAWN:	SURAJ P	8-MAR-12	FIRST ANGLE PROJECTION
ENGINEER:	R.BRAUN/E.KLOSTERMANN	28-MAR-12	
APPROVED:	C.CUMMISKEY	28-MAR-12	

PROJECT: DRAWINGS SHEET 5 OF 11

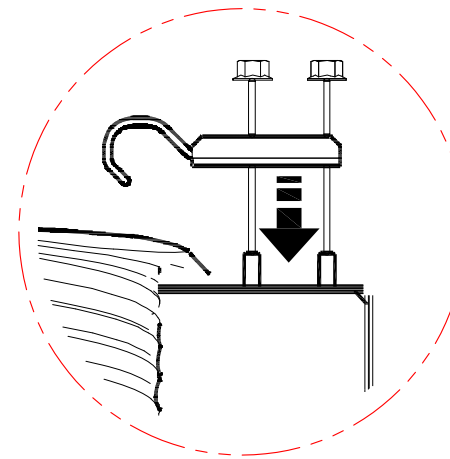
TYPICAL INTAKE AND EXHAUST TUBE CONNECTION



CEILING TILE KIT DETAILS



CEILING KIT ASSEMBLY



DETAIL-G
(ENLARGED VIEW)

- NOTES:
- 1.INSTALLATION SHALL COMPLY WITH ALL APPLICABLE NATIONAL, STATE AND LOCAL ELECTRICAL REGULATIONS.
 - 2.PLEASE REFER TO PRODUCT MANUALS FOR ADDITIONAL DETAILS PRIOR TO INSTALLATION AND SITE PREPARATION WORK.
 - 3.UNLESS OTHERWISE SPECIFIED, ALL DIMENSIONS ARE IN MILLIMETERS [INCHES].

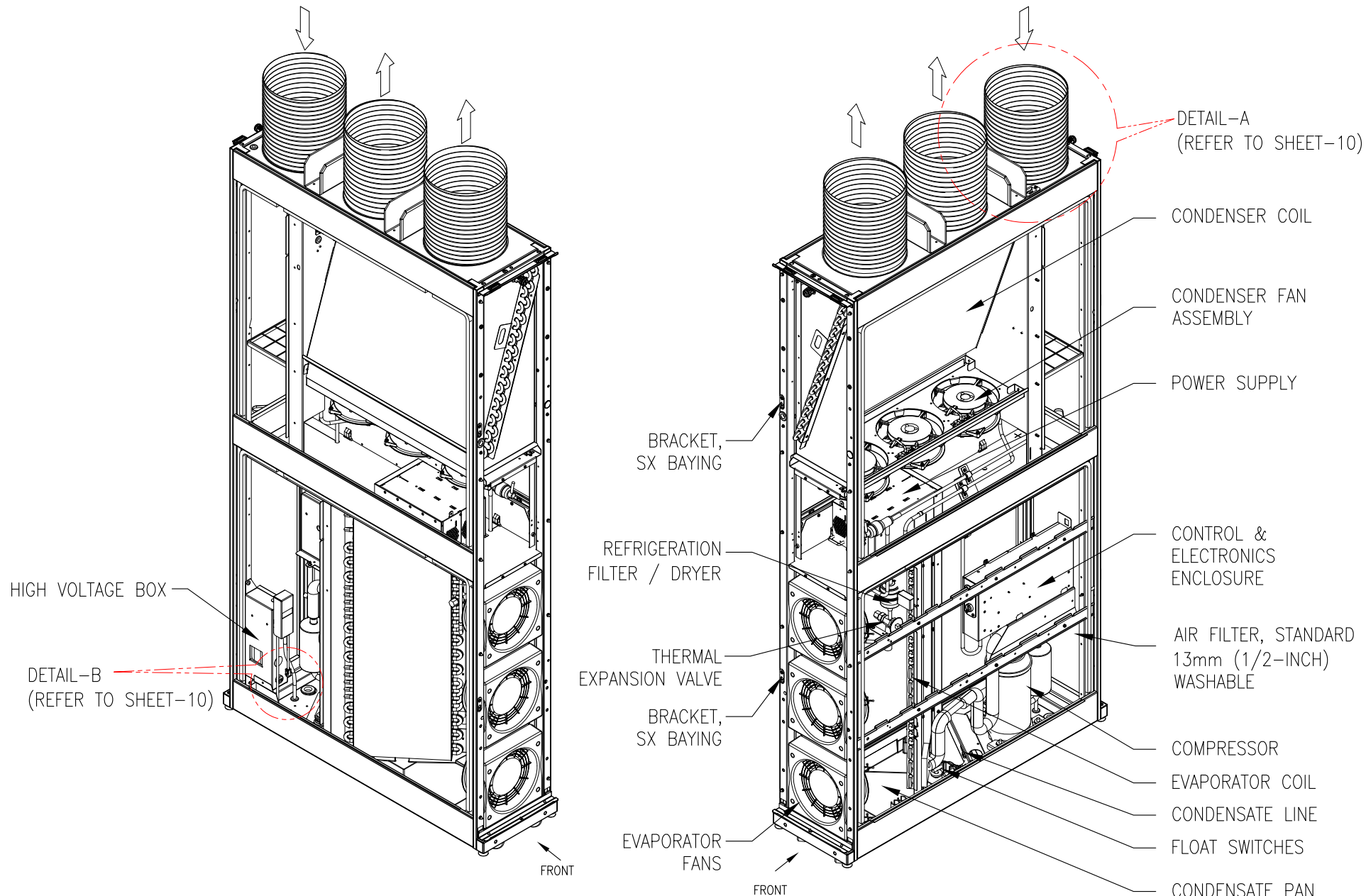
THIS DRAWING AND SPECIFICATIONS HEREIN ARE THE PROPERTY OF SCHNEIDER ELECTRIC AND SHALL NOT BE COPIED, REPRODUCED OR USED IN WHOLE OR IN PART, AS THE BASIS FOR THE MANUFACTURE OR SALE OF ITEMS WITHOUT WRITTEN PERMISSION FROM SCHNEIDER ELECTRIC. THIS DRAWING IS BASED UPON LATEST AVAILABLE INFORMATION AND IS SUBJECT TO CHANGE WITHOUT NOTICE.



TITLE: InRow DIRECT EXPANSION
InRow SC, 300mm, AIR COOLED
ACSC100 : 200 - 240V, 60 Hz
ACSC101 : 200 - 240V, 50 Hz
CEILING TILE KIT DETAILS

PROJECT: DRAWINGS SHEET 6 OF 11

DWG NO:	ACSC100-101	REV:	0
DRAWN:	SURAJ P	8-MAR-12	FIRST ANGLE PROJECTION
ENGINEER:	R.BRAUN/E.KLOSTERMANN	28-MAR-12	
APPROVED:	C.CUMMISKEY	28-MAR-12	



ISOMETRIC VIEWS
(DOORS, SIDE PANELS, AND PIPING INSULATION REMOVED)

- NOTES:
1. INSTALLATION SHALL COMPLY WITH ALL APPLICABLE NATIONAL, STATE AND LOCAL ELECTRICAL REGULATIONS.
 2. PLEASE REFER TO PRODUCT MANUALS FOR ADDITIONAL DETAILS PRIOR TO INSTALLATION AND SITE PREPARATION WORK.

THIS DRAWING AND SPECIFICATIONS HEREIN ARE THE PROPERTY OF SCHNEIDER ELECTRIC AND SHALL NOT BE COPIED, REPRODUCED OR USED IN WHOLE OR IN PART, AS THE BASIS FOR THE MANUFACTURE OR SALE OF ITEMS WITHOUT WRITTEN PERMISSION FROM SCHNEIDER ELECTRIC. THIS DRAWING IS BASED UPON LATEST AVAILABLE INFORMATION AND IS SUBJECT TO CHANGE WITHOUT NOTICE.



TITLE: InRow DIRECT EXPANSION
InRow SC, 300mm, AIR COOLED
ACSC100 : 200 - 240V, 60 Hz
ACSC101 : 200 - 240V, 50 Hz
ISOMETRIC INTERNAL VIEW

DWG NO: ACSC100-101

REV. 1

DRAWN: SURAJ P/S CUNHA 23-OCT-14

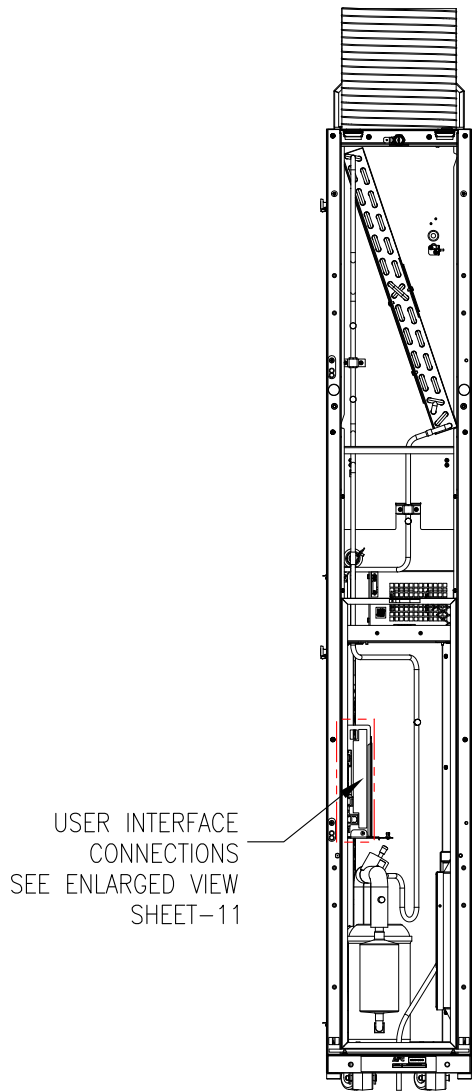
ANGLE PROJECTION

ENGINEER: R. BRAUN/E. KLOSTERMANN 28-MAR-12

APPROVED: C. CUMMISKEY 28-MAR-12

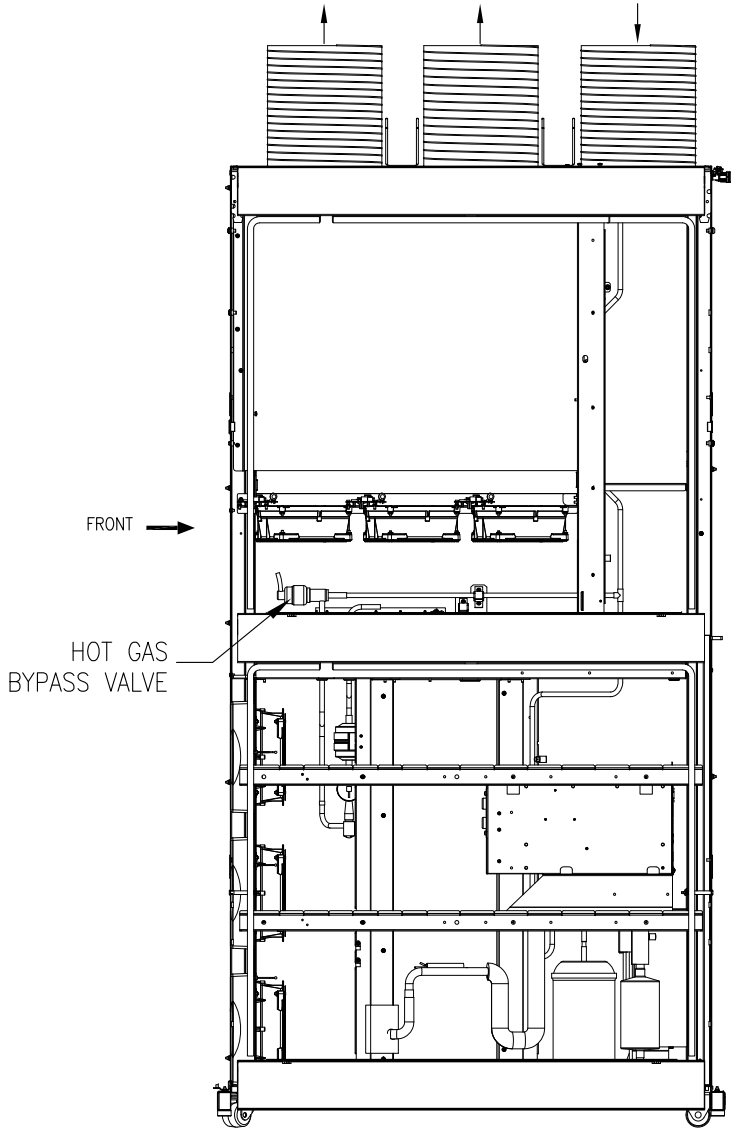
PROJECT: DRAWINGS SHEET 7 OF 11

NA



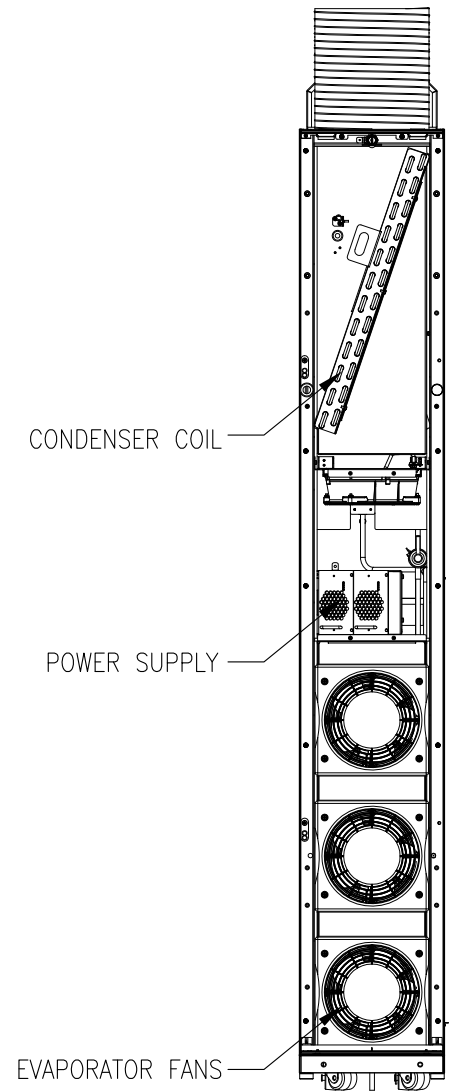
USER INTERFACE CONNECTIONS
SEE ENLARGED VIEW SHEET-11

REAR VIEW
REAR DOOR, FILTERS AND PIPING
INSULATION REMOVED



FRONT →
HOT GAS BYPASS VALVE

SIDE VIEW
SIDE PANELS REMOVED



CONDENSER COIL
POWER SUPPLY
EVAPORATOR FANS

FRONT VIEW
REAR DOOR, FILTERS AND PIPING
INSULATION REMOVED

NOTES:

1. INSTALLATION SHALL COMPLY WITH ALL APPLICABLE NATIONAL, STATE AND LOCAL ELECTRICAL REGULATIONS.
2. PLEASE REFER TO PRODUCT MANUALS FOR ADDITIONAL DETAILS PRIOR TO INSTALLATION AND SITE PREPARATION WORK.

THIS DRAWING AND SPECIFICATIONS HEREIN ARE THE PROPERTY OF SCHNEIDER ELECTRIC AND SHALL NOT BE COPIED, REPRODUCED OR USED IN WHOLE OR IN PART, AS THE BASIS FOR THE MANUFACTURE OR SALE OF ITEMS WITHOUT WRITTEN PERMISSION FROM SCHNEIDER ELECTRIC. THIS DRAWING IS BASED UPON LATEST AVAILABLE INFORMATION AND IS SUBJECT TO CHANGE WITHOUT NOTICE.



TITLE: InRow DIRECT EXPANSION
InRow SC, 300mm, AIR COOLED
ACSC100 : 200 - 240V, 60 Hz
ACSC101 : 200 - 240V, 50 Hz
INTERNAL VIEW

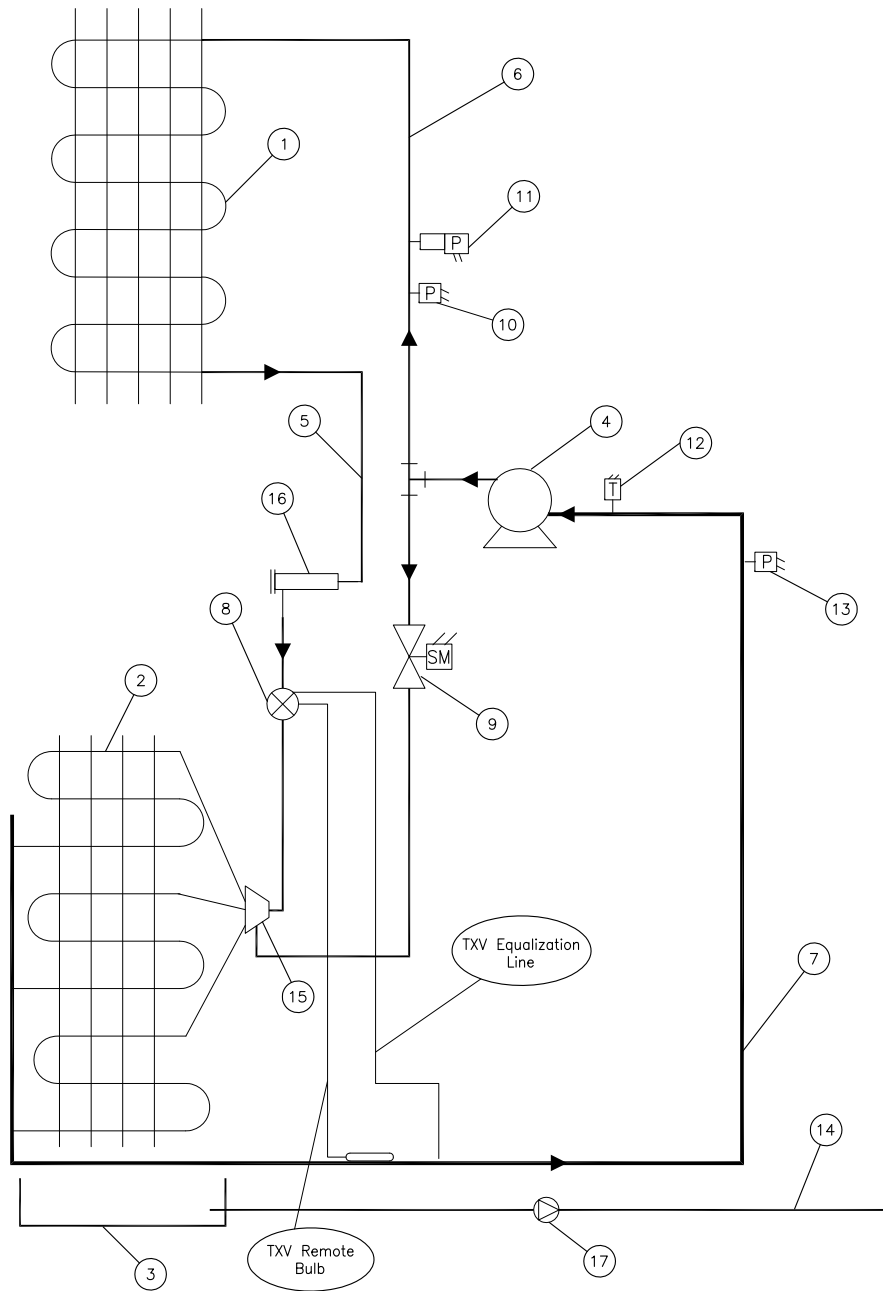
DWG NO: ACSC100-101 REV. 1

DRAWN: SURAJ P/S CUNHA 23-OCT-14
ENGINEER: R.BRAUN/E.KLOSTERMANN 28-MAR-12

PROJECT: DRAWINGS SHEET 8 OF 11

APPROVED: C.CUMMISKEY 28-MAR-12

FIRST ANGLE PROJECTION



- ① CONDENSER COIL
- ② EVAPORATOR COIL
- ③ CONDENSATE PAN
- ④ COMPRESSOR
- ⑤ REFRIGERANT LIQUID PIPING
- ⑥ REFRIGERANT DISCHARGE PIPING
- ⑦ REFRIGERANT SUCTION PIPING
- ⑧ THERMOSTATIC EXPANSION VALVE
- ⑨ ELECTRONIC HOT GAS BYPASS VALVE
- ⑩ DISCHARGE PRESSURE TRANSDUCER
- ⑪ HIGH PRESSURE CUT OUT SWITCH
- ⑫ SUCTION TEMPERATURE SENSOR
- ⑬ SUCTION PRESSURE TRANSDUCER
- ⑭ CONDENSATE DRAIN (ONE DRAIN LINE PROVIDED, CUSTOMER TO ROUTE FOR BOTTOM PLUMB OR TOP PLUMB)
- ⑮ DISTRIBUTOR
- ⑯ REFRIGERANT LIQUID FILTER DRIER
- ⑰ CONDENSATE PUMP

NOTES:

1. INSTALLATION SHALL COMPLY WITH ALL APPLICABLE NATIONAL, STATE AND LOCAL ELECTRICAL REGULATIONS.
2. PLEASE REFER TO PRODUCT MANUALS FOR ADDITIONAL DETAILS PRIOR TO INSTALLATION AND SITE PREPARATION WORK.

THIS DRAWING AND SPECIFICATIONS HEREIN ARE THE PROPERTY OF SCHNEIDER ELECTRIC AND SHALL NOT BE COPIED, REPRODUCED OR USED IN WHOLE OR IN PART, AS THE BASIS FOR THE MANUFACTURE OR SALE OF ITEMS WITHOUT WRITTEN PERMISSION FROM SCHNEIDER ELECTRIC. THIS DRAWING IS BASED UPON LATEST AVAILABLE INFORMATION AND IS SUBJECT TO CHANGE WITHOUT NOTICE.



TITLE: InRow DIRECT EXPANSION
InRow SC, 300mm, AIR COOLED
ACSC100 : 200 - 240V, 60 Hz
ACSC101 : 200 - 240V, 50 Hz
INTERNAL PIPING

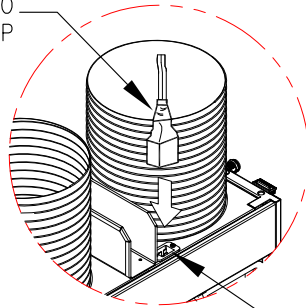
DWG NO: ACSC100-101 REV. 0

DRAWN: SURAJ P	8-MAR-12	ANGLE
ENGINEER: R.BRAUN/E.KLOSTERMANN	28-MAR-12	PROJECTION
APPROVED: C.CUMMISKEY	28-MAR-12	NA

POWER CORD CONNECTIONS

ACSC100, 200-240V, 60Hz

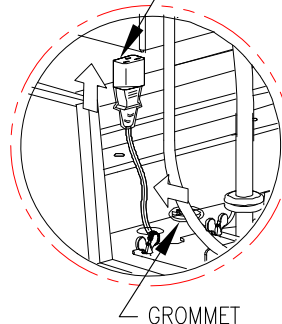
POWER CORD
IEC-C19 TO
NEMA L6-20P



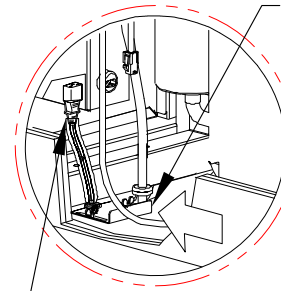
TOP POWER
RECEPTACLE

DETAIL-A (ENLARGED)
TOP CABLE ENTRY

POWER CORD
NEMA L6-20P



GROMMET



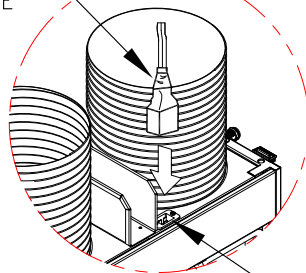
SLIDE COVER PLATE
TO CAPTURE
POWER CORD

PLUG POWER CORD INTO
THE HIGH VOLTAGE BOX

DETAIL-B (ENLARGED)
BOTTOM CABLE ENTRY

ACSC101, 200-240V, 50Hz

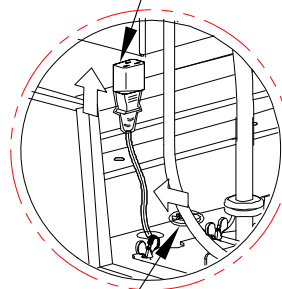
POWER CORD
IEC-C19 TO
IEC 309 16A 2P+E



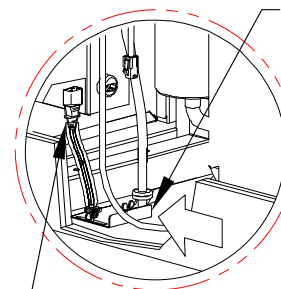
TOP POWER
RECEPTACLE

DETAIL-A (ENLARGED)
TOP CABLE ENTRY

POWER CORD
IEC-C19 TO IEC 309 16A 2P+E



GROMMET



SLIDE COVER PLATE
TO CAPTURE
POWER CORD

PLUG POWER CORD INTO
THE HIGH VOLTAGE BOX

DETAIL-B (ENLARGED)
BOTTOM CABLE ENTRY

NOTES:

1. INSTALLATION SHALL COMPLY WITH ALL APPLICABLE NATIONAL, STATE AND LOCAL ELECTRICAL REGULATIONS.
2. PLEASE REFER TO PRODUCT MANUALS FOR ADDITIONAL DETAILS PRIOR TO INSTALLATION AND SITE PREPARATION WORK.

THIS DRAWING AND SPECIFICATIONS HEREIN ARE THE PROPERTY OF SCHNEIDER ELECTRIC AND SHALL NOT BE COPIED, REPRODUCED OR USED IN WHOLE OR IN PART, AS THE BASIS FOR THE MANUFACTURE OR SALE OF ITEMS WITHOUT WRITTEN PERMISSION FROM SCHNEIDER ELECTRIC. THIS DRAWING IS BASED UPON LATEST AVAILABLE INFORMATION AND IS SUBJECT TO CHANGE WITHOUT NOTICE.



TITLE: InRow DIRECT EXPANSION
InRow SC, 300mm, AIR COOLED
ACSC100 : 200 - 240V, 60 Hz
ACSC101 : 200 - 240V, 50 Hz
POWER CARD CONNECTION DETAILS

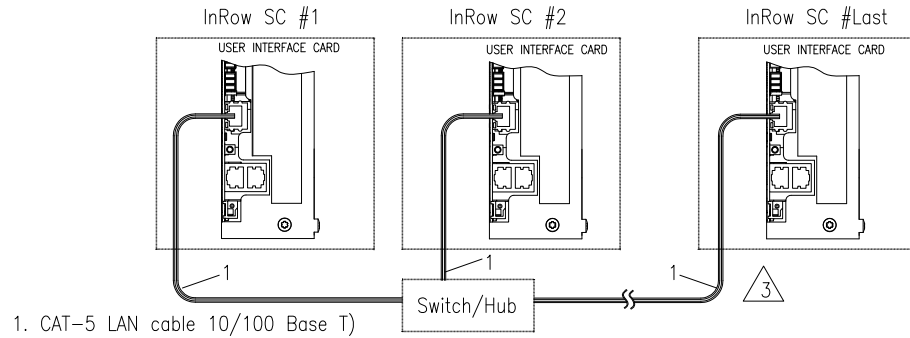
DWG NO: ACSC100-101 REV. 0

DRAWN: SURAJ P	8-MAR-12	ANGLE PROJECTION
ENGINEER: R.BRAUN/E.KLOSTERMANN	28-MAR-12	

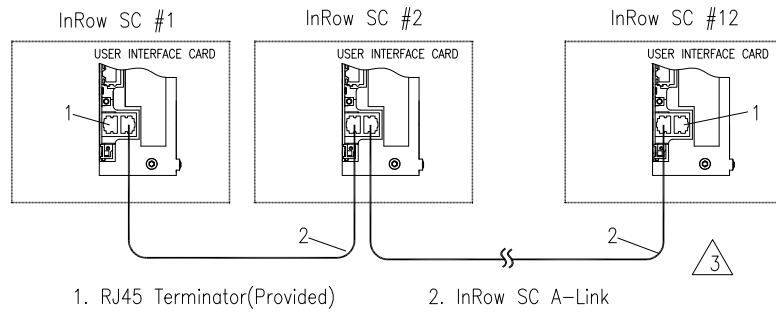
PROJECT: DRAWINGS SHEET 10 OF 11

APPROVED: C.CUMMISKEY 28-MAR-12

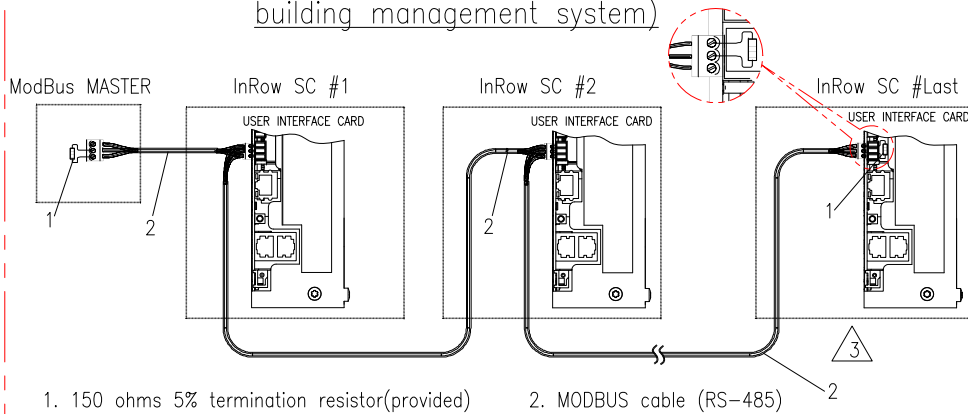
NETWORK PORT CONNECTIONS(Used for ISX Manager or Network connectivity)



A-LINK COMMUNICATION CONNECTIONS(Used for InRow SC group control)



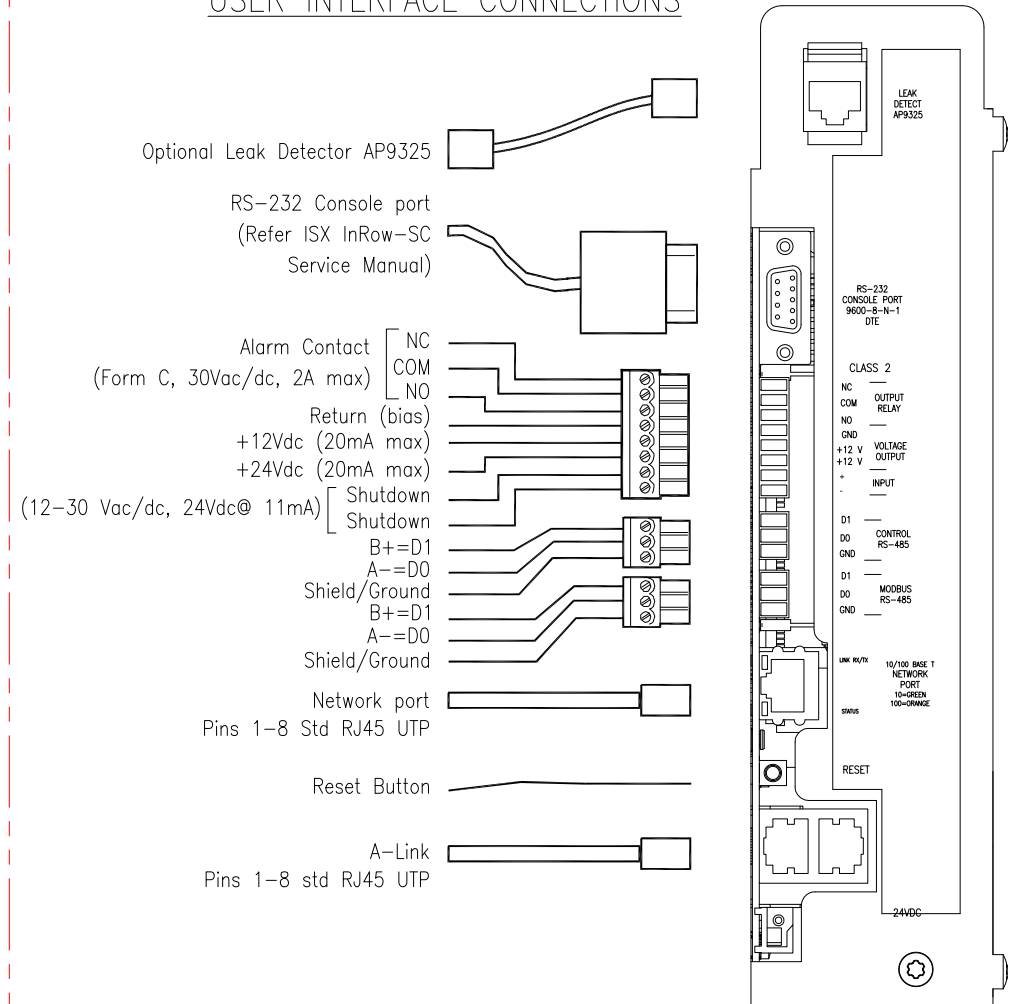
MODBUS CONNECTIONS(Used for Modbus connection to building management system)



NOTES:

1. INSTALLATION SHALL COMPLY WITH ALL APPLICABLE NATIONAL, STATE AND LOCAL ELECTRICAL REGULATIONS.
2. PLEASE REFER TO PRODUCT MANUALS FOR ADDITIONAL DETAILS PRIOR TO INSTALLATION AND SITE PREPARATION WORK.
3. INTER-CONNECTING WIRING IS SUPPLIED AND FIELD INSTALLED BY OTHERS.

USER INTERFACE CONNECTIONS



THIS DRAWING AND SPECIFICATIONS HEREIN ARE THE PROPERTY OF SCHNEIDER ELECTRIC AND SHALL NOT BE COPIED, REPRODUCED OR USED IN WHOLE OR IN PART, AS THE BASIS FOR THE MANUFACTURE OR SALE OF ITEMS WITHOUT WRITTEN PERMISSION FROM SCHNEIDER ELECTRIC. THIS DRAWING IS BASED UPON LATEST AVAILABLE INFORMATION AND IS SUBJECT TO CHANGE WITHOUT NOTICE.

Schneider Electric

TITLE: InRow DIRECT EXPANSION
InRow SC, 300mm, AIR COOLED
ACSC100 : 200 - 240V, 60 Hz
ACSC101 : 200 - 240V, 50 Hz
CONTROL AND USER INTERFACE

DWG NO: ACSC100-101 REV. 0

DRAWN: SURAJ P 8-MAR-12 ANGLE PROJECTION

ENGINEER: R.BRAUN/E.KLOSTERMANN 28-MAR-12

PROJECT: DRAWINGS SHEET 11 OF 11

APPROVED: C.CUMMISKEY 28-MAR-12