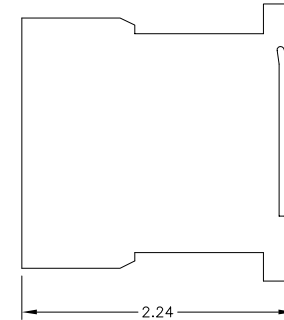
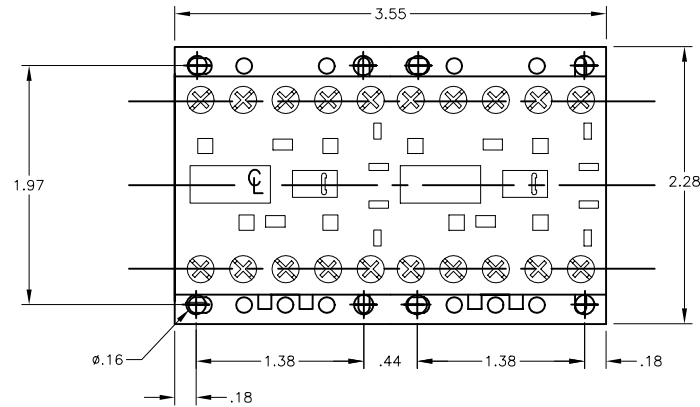


CODE (1)	AUX CONTACTS		TYPE OF CONNECTION	MAX CURRENT		MAXIMUM HORSEPOWER RATINGS					
	NO	NC		INDUCTIVE AC3 (A)	RESISTIVE AC1 (A)	1Ø		3Ø			
						115 V	230 V	200 V	230 V	460 V	575 V
0610	1	—	SCREW-CLAMP	6	15	0.5	1	1.5	1.5	3	3
0601	—	1									
0910	1	—	SCREW-CLAMP	9	20	0.5	1.5	2	3	5	5
0901	—	1									
1210	1	—	SCREW-CLAMP	12	20	0.5	1.5	3	3	7.5	10
1201	—	1									

(LC2 KO) AC CONTACTORS			(LP2 KO) DC CONTACTORS		(LP5 KO) DC LOW CONSUMPTION	
VOLTS 50/60 HZ	AC CODE (2)	DC CODE (2)	VOLTS DC	DC CODE (2)	VOLTS DC	DC CODE (2)
12	J7	12	JD	12	JW3	
24	B7	20	ZD	24	BW3	
36	C7	24	BD	48	EW3	
42	D7	36	CD	72	SW3	
48	E7	48	ED			
110	F7	60	ND			
127	FC7	72	SD			
220/230	M7	100	KD			
230	P7	110	FD			
230/240	U7	125	GD			
380/400	Q7	200	LD			
400	V7	220	MD			
400/415	N7	230	MPD			
440	R7	240	MUD			
500	S7	250	UD			
660/690	Y7					



Catalog Number: LC2 K(1)(2), LP2 K(1)(2), LP5 K(1)(2)  
Ratings: SEE CHART  
UL File/CCN: -  
CSA File/Class: -  
Meets Standards: IEC 947, NF C 63-140, VDE 0660, BS 5424  
Weight: -  
Wire Size: AWG 18-12  
Terminal torque: 7 LB-IN  
Mounting Hwd: 35mm DIN rail, #8 screws

"THE SQUARE D COMPANY HAS PROPRIETARY RIGHTS TO THE INFORMATION CONTAINED HEREON. THIS INFORMATION REMAINS THE PROPERTY OF SQUARE D COMPANY AND MAY BE USED ONLY IN CONFORMANCE WITH INSTRUCTIONS ISSUED BY SQUARE D COMPANY. USER SHOULD VERIFY DRAWINGS ARE TO THE LATEST/CURRENT REVISION PRIOR TO INCORPORATING IN A DESIGN FILE."

**DO NOT SCALE DRAWING**  
UNLESS OTHERWISE SPECIFIED DIMENSIONS ARE IN INCHES

THIRD ANGLE PROJECTION  
TOLERANCES  
UNLESS OTHERWISE SPECIFIED  
2 PLACE DECIMALS ± .01

IEC CONTACTOR  
REVERSING (K-LINE)  
LC2 KO(1)(2), LP2 KO(1)(2), LP5 KO(1)(2)

**SQUARE D COMPANY**

DWG# E0210301-01  
NO.