

MAXIMUM POWER RATINGS FOR 1PH AND 3PH MOTORS  
50/60 HZ AC3 DUTY

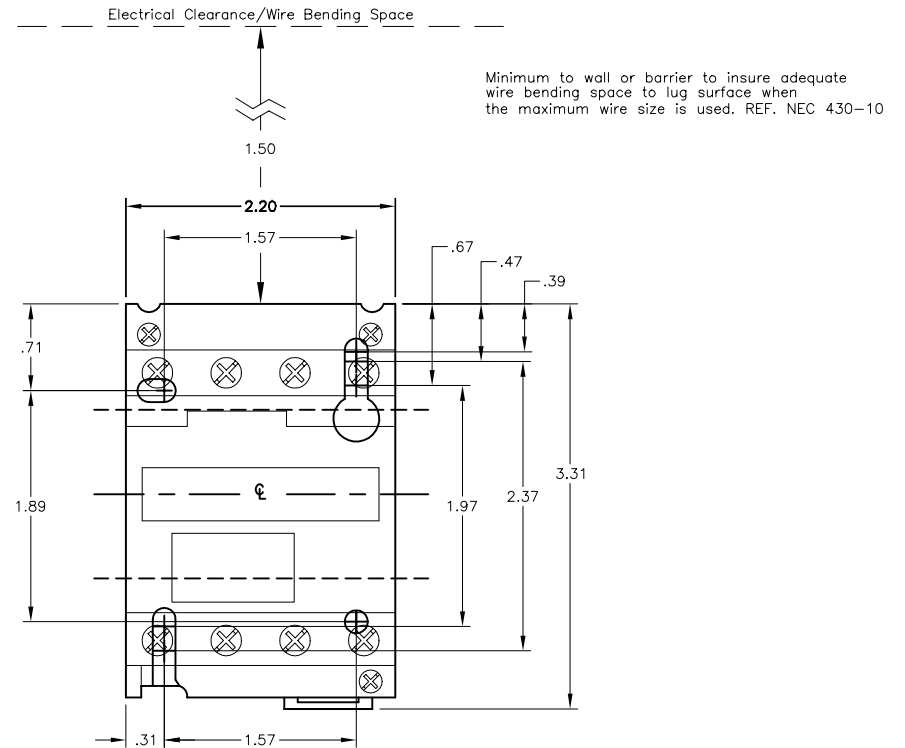
	SINGLE PHASE		THREE PHASE			
	115V	230V	200V	230V	460V	575V
D25	2 HP	3 HP	75 HP	75 HP	15 HP	20 HP
D32	2 HP	5 HP	10 HP	10 HP	20 HP	30 HP

AUXILIARY CONTACTS

CODE (1)	NO	NC
10	1	-
01	-	1

COIL VOLTAGES FOR LC1 D09 TO D80

VOLTS	50 HZ CODE (2)	60 HZ CODE (2)	50/60 HZ CODE (2)
24	B5	B6	B7
110	F5	F6	F7
120	-	G6	-
127	G5	-	-
208	-	L6	-
220	M5	M6	M7
240	U5	U6	U7
277	-	W6	-
380	Q5	Q6	Q7
415	N5	-	N7
440	R5	R6	R7
480	-	T6	-
575	-	S6	-
600	-	X6	-
660	Y5	-	-



Catalog Number: LC1 D25(1)(2), LC1 D32(1)(2)  
 Ratings: LC1 D25 - 600V/25A, LC1 D32 - 600V/32A  
 UL File/CCN: E48539/NLDX  
 CSA File/Class: LR43364/3211 04  
 Meets Standards: IEC 158-1, IEC 947-1, IEC 947-4  
 Weight: .505kg  
 Wire Size: [LC1 D25 Power #8-#18 / Control #10-#18] [LC1 D32 Power #6-#14/Control #10-#18]  
 Terminal torque: [LC1 D25-15 LB-IN] [LC1 D32-20 LB-IN]  
 Mounting Hwd.: 35mm DIN rail, #8 screws

DEPTH: LC1 D25 - 3.66[93]  
 DEPTH: LC1 D32 - 3.86[98]

"THE SQUARE D COMPANY HAS PROPRIETARY RIGHTS TO THE INFORMATION CONTAINED HEREON. THIS INFORMATION REMAINS THE PROPERTY OF SQUARE D COMPANY AND MAY BE USED ONLY IN CONFORMANCE WITH INSTRUCTIONS ISSUED BY SQUARE D COMPANY. USER SHOULD VERIFY DRAWINGS ARE TO THE LATEST/CURRENT REVISION PRIOR TO INCORPORATING IN A DESIGN FILE."

**DO NOT SCALE DRAWING**  
 UNLESS OTHERWISE SPECIFIED DIMENSIONS ARE IN INCHES

THIRD ANGLE PROJECTION

**TOLERANCES**  
 UNLESS OTHERWISE SPECIFIED  
 2 PLACE DECIMALS ± .01

IEC CONTACTOR  
 LC1 D25(1), LC1 D32(1)(2)

**SQUARE D COMPANY**

DWG# E0200301-01  
 No.