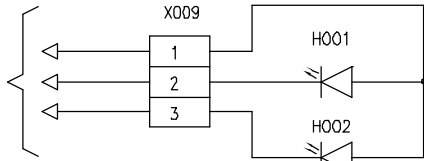
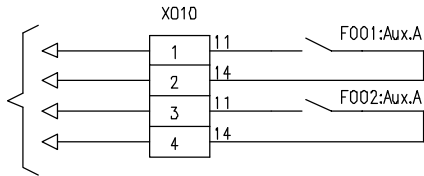


CONTROL CIRCUIT

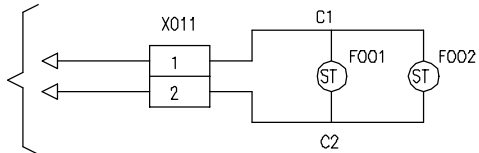
LED signal from UPS
"OK for operating corresponding MCCB"



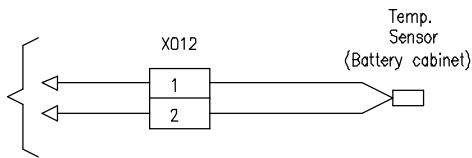
MCCB position signals for UPS



Trip for emergency stop (220-240V AC)



Battery temperature sensing for compensation of charging voltage

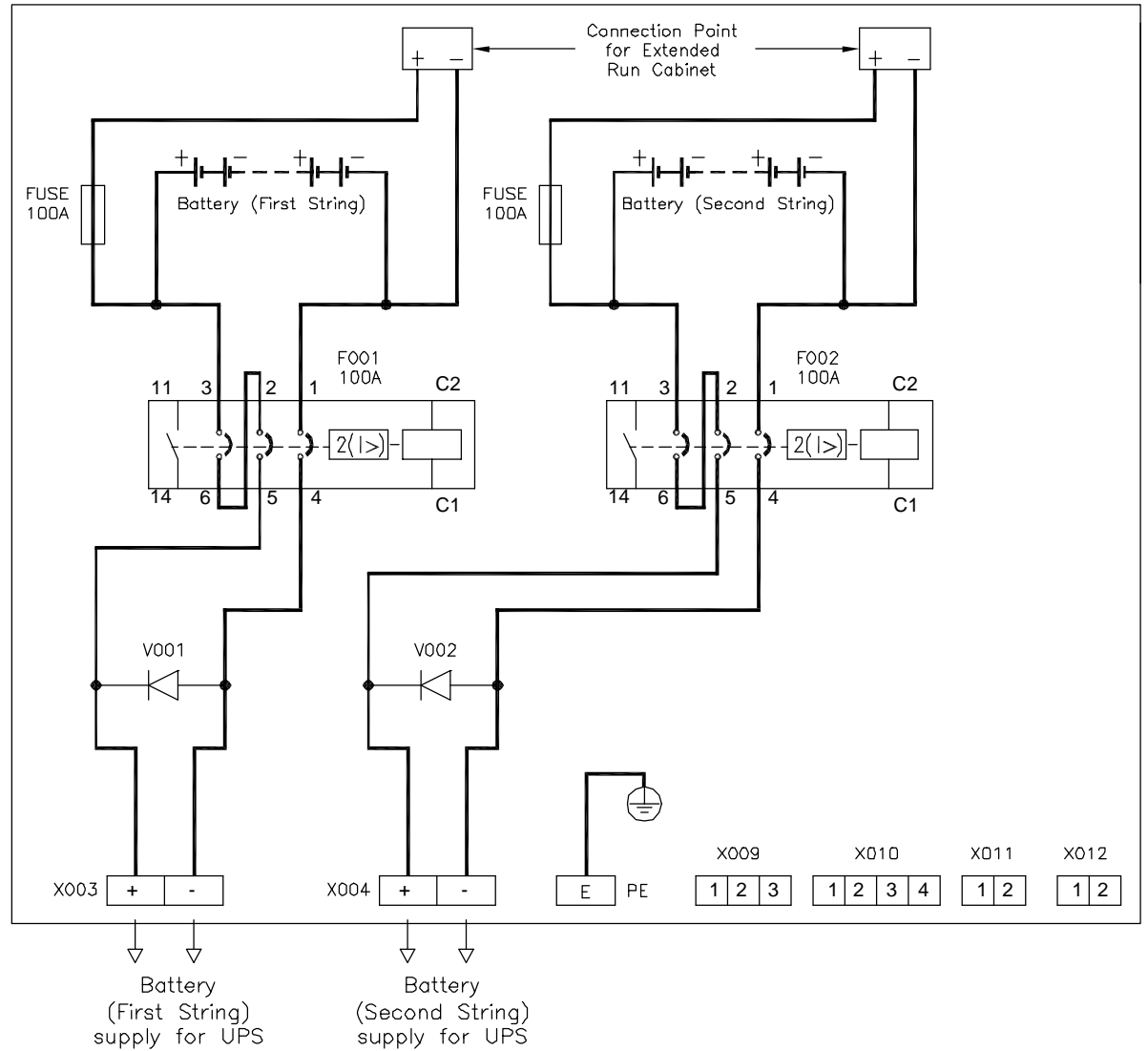


NOTE:

ST : Shunt trip

C1,C2 : Shunt trip coil connections

POWER CIRCUIT



Battery (First String) supply for UPS

Battery (Second String) supply for UPS

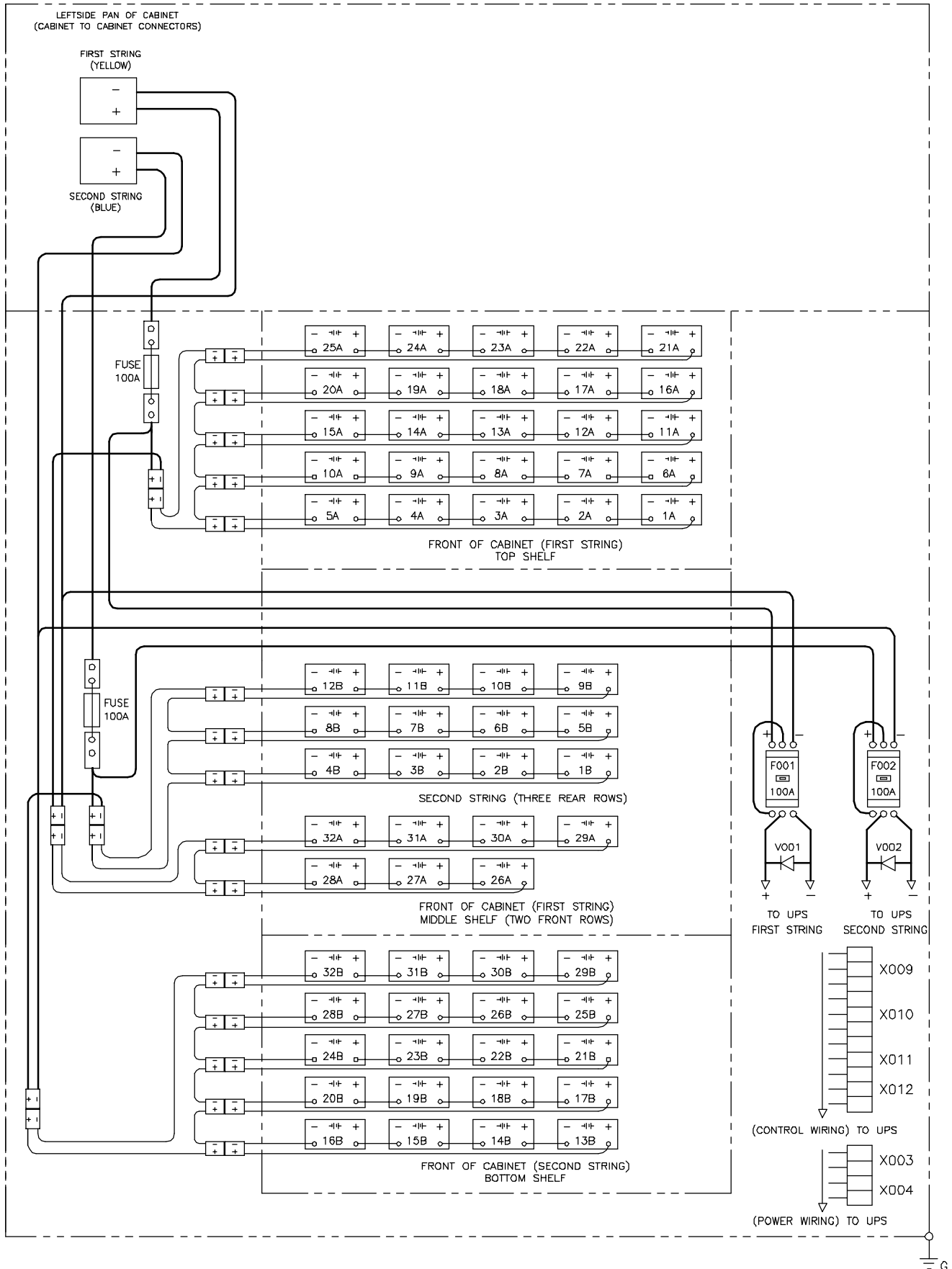
THIS DRAWING AND SPECIFICATIONS HEREIN ARE THE PROPERTY OF AMERICAN POWER CONVERSION AND SHALL NOT BE COPIED, REPRODUCED OR USED IN WHOLE OR IN PART, AS THE BASIS FOR THE MANUFACTURE OR SALE OF ITEMS WITHOUT WRITTEN PERMISSION FROM APC. THIS DRAWING IS BASED UPON LATEST AVAILABLE INFORMATION AND IS SUBJECT TO CHANGE WITHOUT NOTICE.

TITLE: SILCON 40/60kW UPS
BATTERY CABINET
40/60kW, 400V (STYLE: H2)
PROJECT: SUBMITTAL DRAWINGS SHEET 1 OF 4

DWG NO: SLB40K60H2-ES
DRAWN BY: BALAMURUGAN
CHECKED BY: K.ROKOHL
ENGINEER: C.RICHFORD/CJARSEN

REV. 1
24/08/03
24/08/03
24/08/03





NOTES:

1. POWER WIRING AND CONTROL WIRING SHOULD BE SEGREGATED.
2. TO EXTEND THE BACKUP TIME, BATTERY CUBICLES CAN BE PARALLELED.
3. INSTALLATION MUST COMPLY WITH ALL APPLICABLE NATIONAL AND LOCAL CODES.

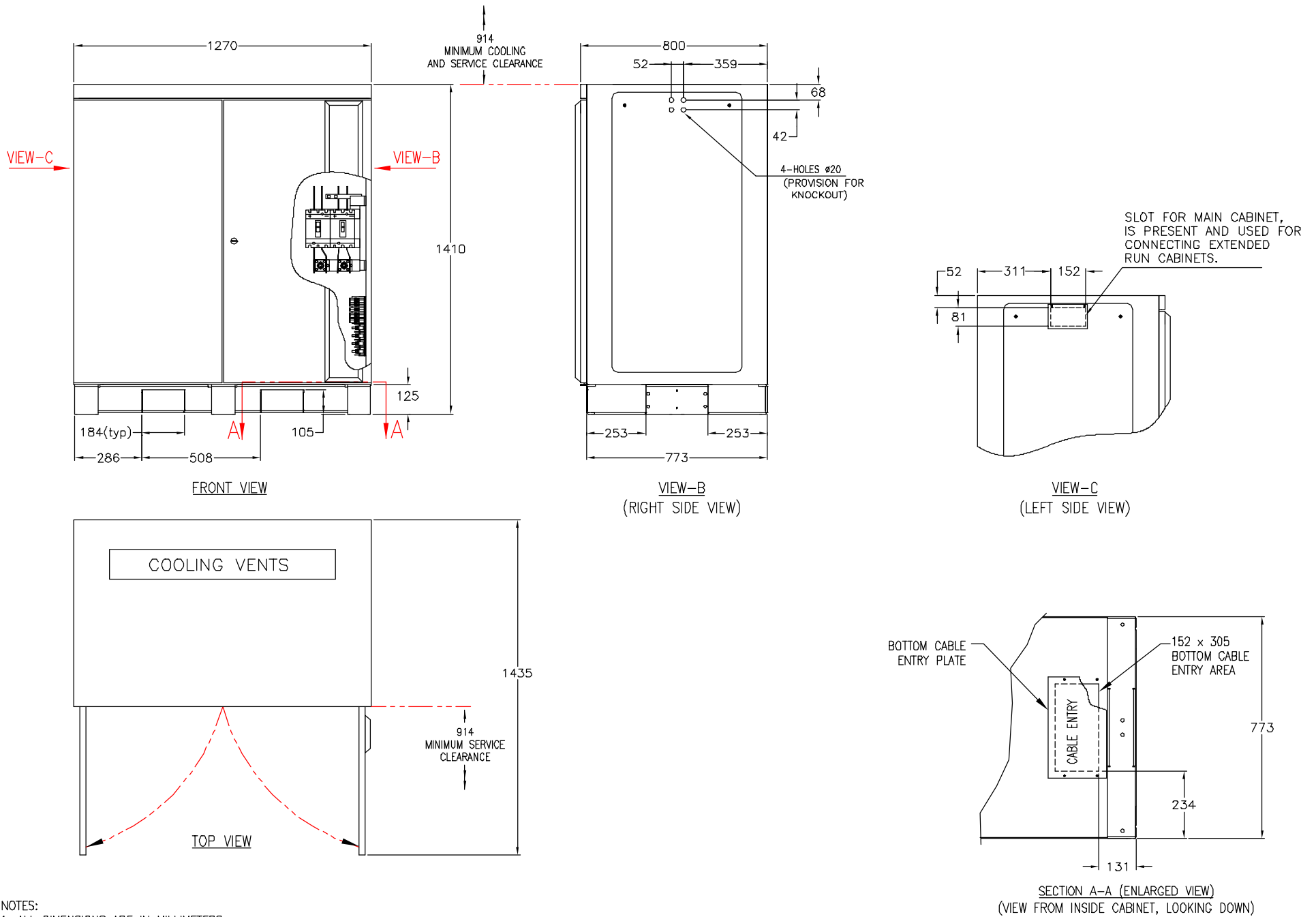
THIS DRAWING AND SPECIFICATIONS HERIN ARE THE PROPERTY OF AMERICAN POWER CONVERSION AND SHALL NOT BE COPIED, REPRODUCED OR USED IN WHOLE OR IN PART, AS THE BASIS FOR THE MANUFACTURE OR SALE OF ITEMS WITHOUT WRITTEN PERMISSION FROM APC. THIS DRAWING IS BASED UPON LATEST AVAILABLE INFORMATION AND IS SUBJECT TO CHANGE WITHOUT NOTICE.

TITLE: SILCON 40/60kW UPS
BATTERY CABINET
40/60kW, 400V (STYLE: H2)
PROJECT: SUBMITTAL DRAWINGS SHEET 2 OF 4

DWG NO: SLB40K60H2-CD
DRAWN BY: Balamurugan
CHECKED BY: Yogesh
ENGINEER: C.Rachford

REV. -
24/10/01
24/10/01
24/10/01

APC
AMERICAN POWER CONVERSION
132 FAIRGROUNDS RD.
WEST KINGSTON, RI 02892



NOTES:

1. ALL DIMENSIONS ARE IN MILLIMETERS.
2. MINIMUM COOLING AND SERVICE CLEARANCE IS 914 mm (FRONT AND TOP).
3. CONDUIT ENTRY IS BOTTOM ONLY.
4. UNIT WEIGHT IS 1430 kg.
5. BOTTOM CABLE ENTRY PLATE IS 203x356x2.67mm. TOP CONNER IS 2.67mm THICK.
6. INSTALLATION MUST COMPLY WITH NATIONAL AND LOCAL CODES.

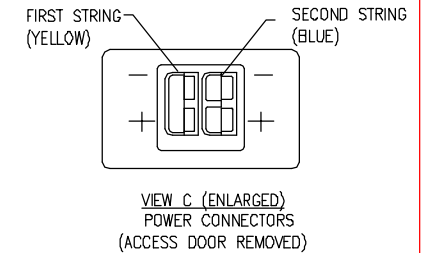
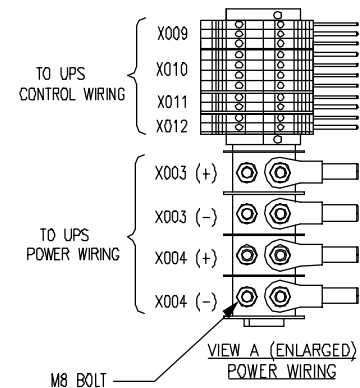
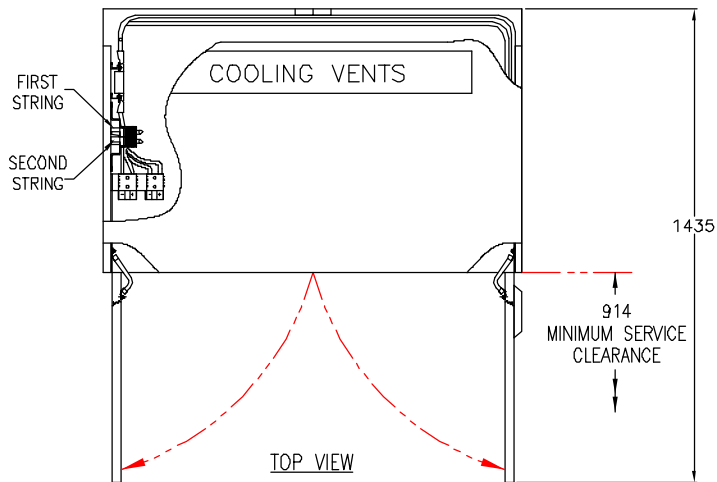
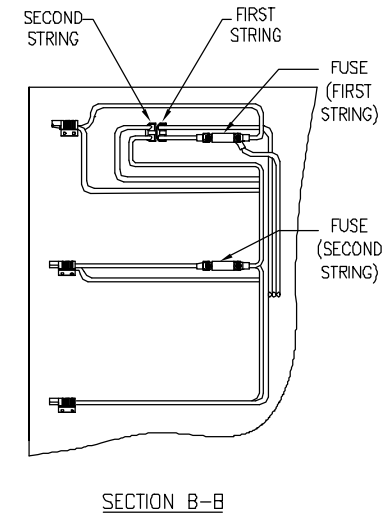
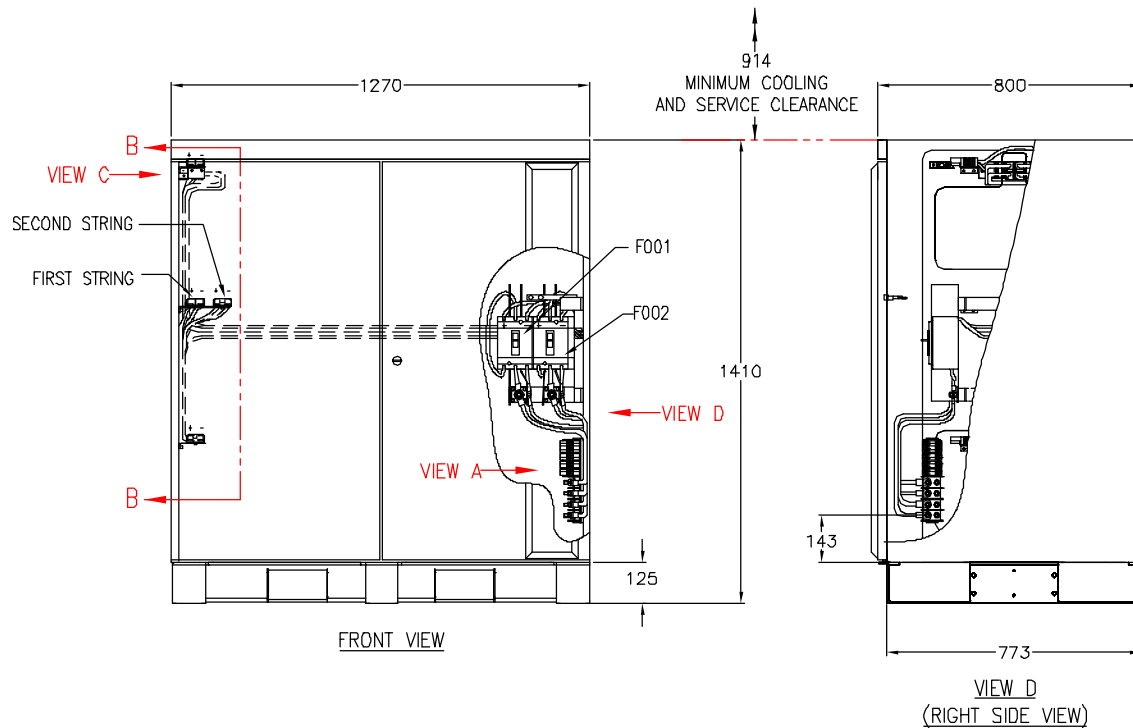
THIS DRAWING AND SPECIFICATIONS HEREIN ARE THE PROPERTY OF AMERICAN POWER CONVERSION AND SHALL NOT BE COPIED, REPRODUCED OR USED IN WHOLE OR IN PART, AS THE BASIS FOR THE MANUFACTURE OR SALE OF ITEMS WITHOUT WRITTEN PERMISSION FROM APC. THIS DRAWING IS BASED UPON LATEST AVAILABLE INFORMATION AND IS SUBJECT TO CHANGE WITHOUT NOTICE.

TITLE: SILCON 40/60kW UPS
BATTERY CABINET
40/60kW, 400V (STYLE: H2)
PROJECT: SUBMITTAL DRAWINGS SHEET 3 OF 4

DWG NO: SLB40K60H2-MM
DRAWN BY: K.Nagendra
CHECKED BY: Yogesh
ENGINEER: C.Rochford

REV. -
24/10/01
24/10/01
24/10/01





NOTES:

1. ALL DIMENSIONS ARE IN MILLIMETERS.
2. BATTERY CABLING VOLTAGE DROP SHOULD NOT EXCEED 1%.
3. CIRCUIT BREAKERS F001,F002 AND FUSES ARE 100 AMP.
4. WIRING CONFIGURATION SHOWN IS FOR REFERENCE ONLY.
5. INSTALLATION MUST COMPLY WITH NATIONAL AND LOCAL CODES.

THIS DRAWING AND SPECIFICATIONS HEREIN ARE THE PROPERTY OF AMERICAN POWER CONVERSION AND SHALL NOT BE COPIED, REPRODUCED OR USED IN WHOLE OR IN PART, AS THE BASIS FOR THE MANUFACTURE OR SALE OF ITEMS WITHOUT WRITTEN PERMISSION FROM APC. THIS DRAWING IS BASED UPON LATEST AVAILABLE INFORMATION AND IS SUBJECT TO CHANGE WITHOUT NOTICE.

TITLE: SILCON 40/60kW UPS BATTERY CABINET 40/60kW, 400V (STYLE: H2)
 PROJECT: SUBMITTAL DRAWINGS SHEET 4 OF 4

DWG NO: SLB40K60H2-ME
 DRAWN BY: BALAMURUGAN
 CHECKED BY: YOGESH
 ENGINEER: C. ROCHFORD

REV. 1
 24/09/03
 24/09/03
 24/09/03

