

NOTES:

1. PLEASE REFER TO APC INSTALLATION GUIDE.
2. UTILITY SOURCE MUST BE WYE 3 PHASE 4 WIRE + GROUND PROVIDED BY OTHERS.
3. ALL AC OUTPUT CABLING FROM UPS IS 3 WIRE + GROUND 400/415 V AC 3-PHASE.
- △ 4. DC CABLING SHOULD BE SEGREGATED FROM AC CABLING.
- △ 5. SEE BATTERY INSTALLATION INFORMATION.
6. UPS OUTPUT CABLES AND INPUT CABLES MUST BE IN SEPARATE CONDUITS.
7. POWER WIRING AND CONTROL WIRING SHOULD BE IN SEPARATE CONDUITS.
8. AC CIRCUIT CABLE LENGTHS (INPUT AND OUTPUT) SHOULD BE EQUAL ON ALL MODULES.
9. DC CIRCUIT CABLE LENGTHS SHOULD BE EQUAL ON ALL MODULES.
10. ----- = CABLING PROVIDED BY OTHERS.
11. INSTALLATION MUST COMPLY WITH NATIONAL AND LOCAL CODES.

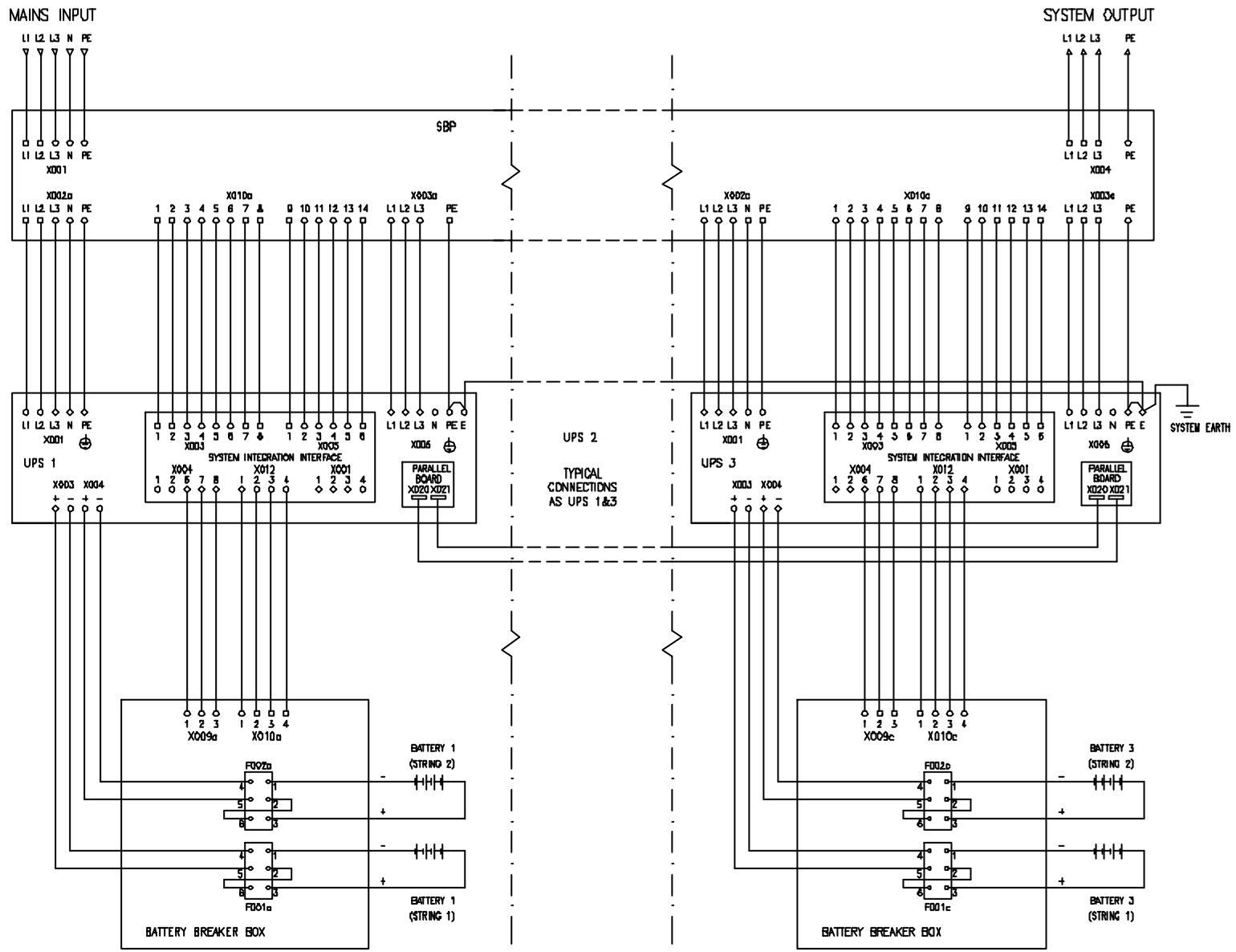
THIS DRAWING AND SPECIFICATIONS HEREBY ARE THE PROPERTY OF AMERICAN POWER CONVERSION AND SHALL NOT BE COPIED, REPRODUCED OR USED IN WHOLE OR IN PART, AS THE BASIS FOR THE MANUFACTURE OR SALE OF ITEMS WITHOUT WRITTEN PERMISSION FROM APC. THIS DRAWING IS BASED UPON LATEST AVAILABLE INFORMATION AND IS SUBJECT TO CHANGE WITHOUT NOTICE.

TITLE: SILICON 480kW UPS
SYSTEM ONE LINE DIAGRAM
480kW, 400/415V AC 3MOD N+1
PROJECT: SUBMITTAL DRAWING SHEET 1 OF 1

DWG NO: SLJ480KHR3-SD
DRAWN: C. KRISHNAMOORTHY 17/10/01
CHECKED: MILIND S/ K KATO 17/10/01
ENGINEER: S WASH 17/10/01

REV. -
SCALE: NTS
PROJECTION





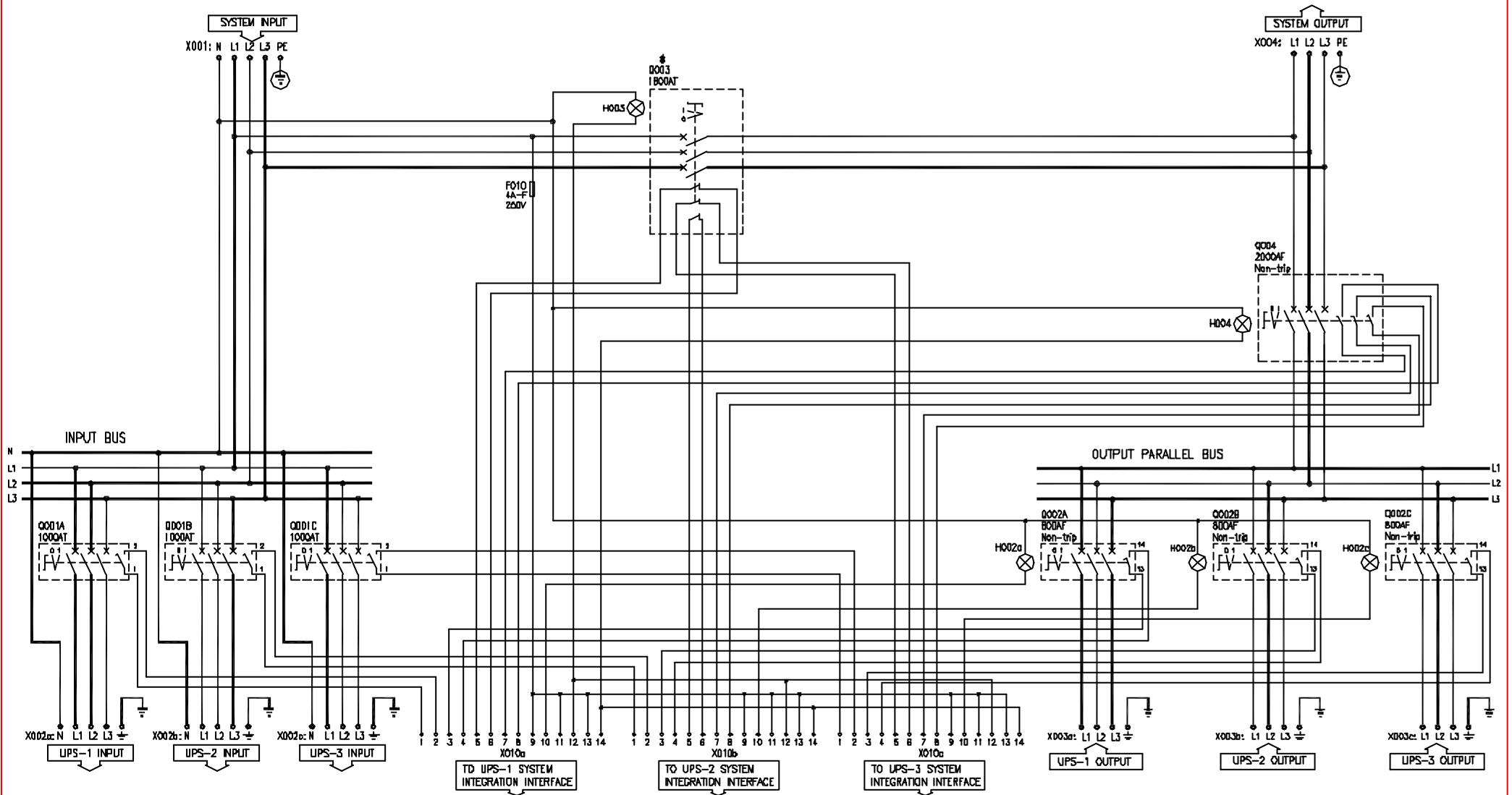
NOTES:-

1. MAINS INPUT MUST BE WYE 3 PHASE 4WIRE + GROUND, PROVIDED BY OTHERS.
2. ALL AC OUTPUT POWER CABLING FROM UPS IS 3 WIRE + GROUND AT 400/415V AC.
3. POWER WIRING AND CONTROL WIRING SHOULD BE IN SEPERATE CONDUITS.
4. CABLING PROVIDED BY OTHERS.
5. INSTALLATION MUST COMPLY WITH NATIONAL AND LOCAL CODES.

THIS DRAWING AND SPECIFICATIONS HEREIN ARE THE PROPERTY OF AMERICAN POWER CONVERSION AND SHALL NOT BE COPIED, REPRODUCED OR USED IN WHOLE OR IN PART, AS THE BASIS FOR THE MANUFACTURE OR SALE OF ITEMS WITHOUT WRITTEN PERMISSION FROM APC. THIS DRAWING IS BASED UPON LATEST AVAILABLE INFORMATION AND IS SUBJECT TO CHANGE WITHOUT NOTICE.

TITLE:	SILCON 480kW UPS SYSTEM WIRING DIAGRAM 480kW, 400/415V AC, 3MOD N+1.	DWG NO:	SLJ480KHR3-WD	REV.	-
PROJECT:	SUBMITAL DRAWING	ENGINEER:	9 MWR	SCALE:	NTS
SHEET	1 OF 1	CHECKED:	MIUND S/K KATO	PROJECTION:	
		DATE:	05/04/02		





NOTES:

1. MAINS INPUT MUST BE WYE 3 PHASE 4 WIRE + GROUND, PROVIDED BY OTHERS.
2. ALL AC OUTPUT POWER CABLING FROM UPS IS 3 PHASE 3 WIRE + GROUND AT 400/415V AC.
3. POWER WIRING AND CONTROL WIRING SHOULD BE IN SEPARATE CONDUITS.
4. INDICATOR LAMPS
 H002a/b/c : OK to operate parallel bus switch Q002A/B/C.
 H003 : OK to operate bypass switch Q003.
 H004 : OK to operate output switch Q004.

5. INSTALLATION MUST COMPLY WITH NATIONAL AND LOCAL CODES.

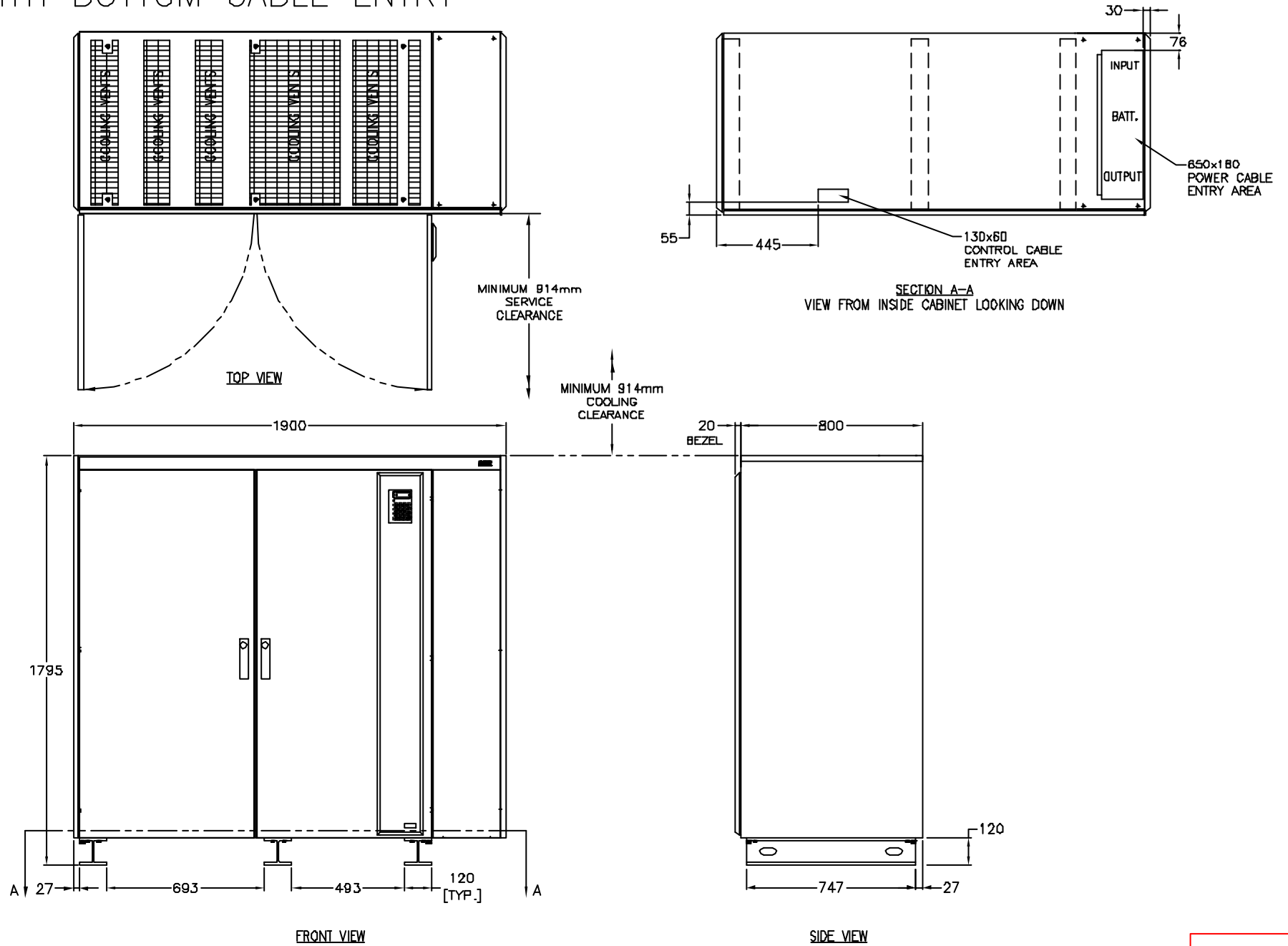
*ONLY Q003 AUXILIARY CONTACTS ARE NORMALLY CLOSED IN OFF POSITION.

THIS DRAWING AND SPECIFICATIONS HEREIN ARE THE PROPERTY OF AMERICAN POWER CONVERSION AND SHALL NOT BE COPIED, REPRODUCED OR USED IN WHOLE OR IN PART, AS THE BASIS FOR THE MANUFACTURE OR SALE OF ITEMS WITHOUT WRITTEN PERMISSION FROM APC. THIS DRAWING IS BASED UPON LATEST AVAILABLE INFORMATION AND IS SUBJECT TO CHANGE WITHOUT NOTICE.

TITLE: SILCON 480kW UPS		DWG NO: SLJSBP480KHR3-ES		REV. --
SERVICE BYPASS PANEL ELECTRICAL SCHEMATIC		DRAWN: JAYAPRAKASH	17/10/01	SCALE: NTS
480kW, 400/415V AC, 3MOD N+1		CHECKED: MUNO S/K KATO	17/10/01	PROJECTION
PROJECT: SUBMITAL DRAWING	SHEET 1 OF 1	ENGINEER: S WASH	17/10/01	



MODEL WITH BOTTOM CABLE ENTRY



NOTES:

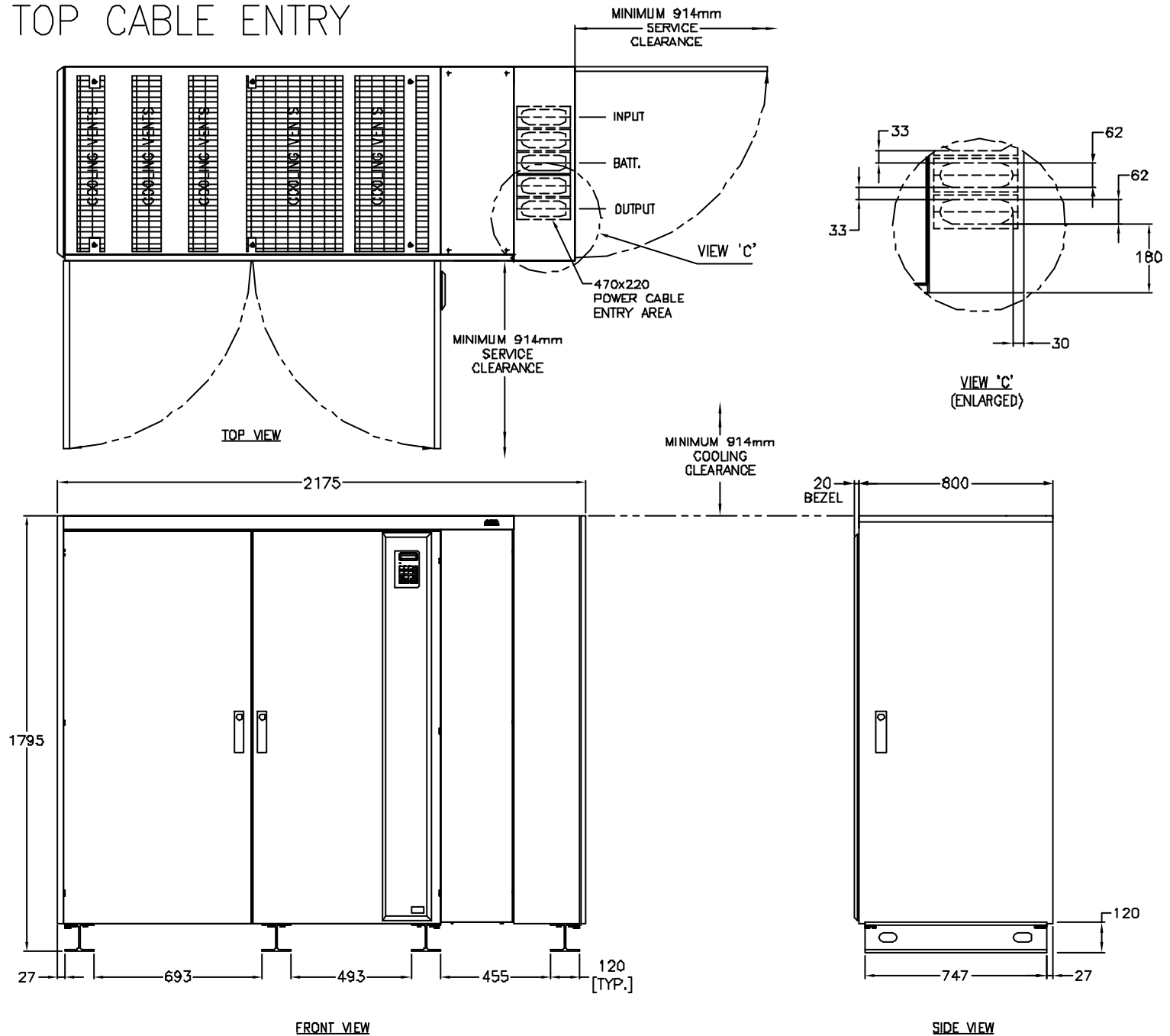
1. ALL DIMENSIONS ARE IN MILLIMETERS
2. MAXIMUM TOLERANCE ± 5 MM
3. UNIT WEIGHT IS = 1800 KG.
4. INSTALLATION MUST COMPLY WITH NATIONAL AND LOCAL CODES

THIS DRAWING AND SPECIFICATIONS HEREIN ARE THE PROPERTY OF AMERICAN POWER CONVERSION AND SHALL NOT BE COPIED, REPRODUCED OR USED IN WHOLE OR IN PART, AS THE BASIS FOR THE MANUFACTURE OR SALE OF ITEMS WITHOUT WRITTEN PERMISSION FROM APC. THIS DRAWING IS BASED UPON LATEST AVAILABLE INFORMATION AND IS SUBJECT TO CHANGE WITHOUT NOTICE.

TITLE:	SILCON 480kW UPS UPS CABINET, MECHANICAL 480kW, 400/415V, 50/60Hz	DWG NO.:	SLJ0480KH-MM	REV.:	-
DRAWN:	JAYAPRAKASH	03/04/02	SCALE:	1:1	
CHECKED:	MILIND S/ K KATO	03/04/02	PROJECTION:		
PROJECT:	SUBMITAL DRAWINGS	SHEET	1 OF 2	ENGINEER:	S WASH
				03/04/02	



MODEL WITH TOP CABLE ENTRY



NOTES:

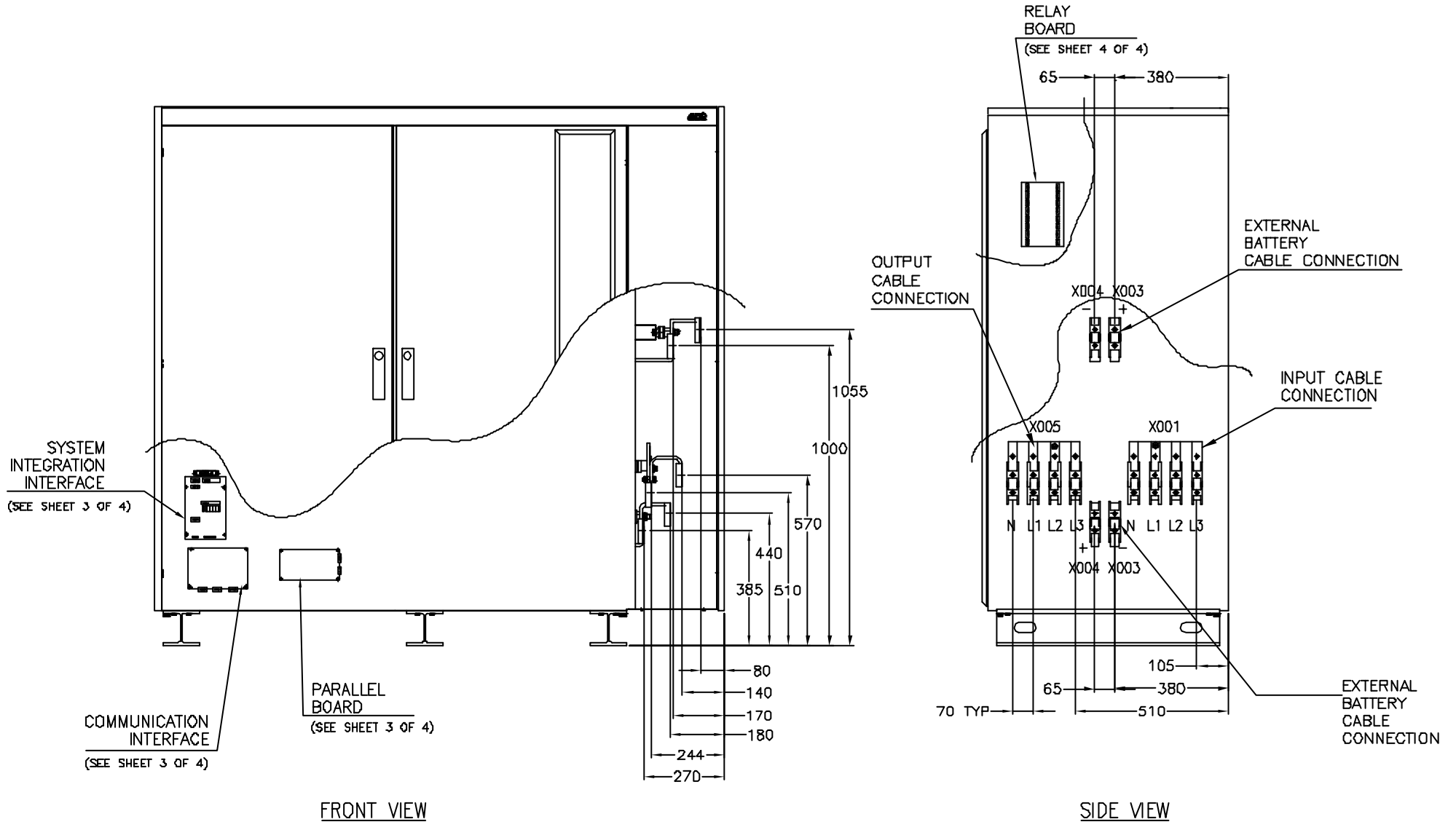
1. ALL DIMENSIONS ARE IN MILLIMETERS
2. MAXIMUM TOLERANCE ± 5 MM
3. UNIT WEIGHT IS = 1900 KG
4. INSTALLATION MUST COMPLY WITH NATIONAL AND LOCAL CODES

THIS DRAWING AND SPECIFICATIONS HEREIN ARE THE PROPERTY OF AMERICAN POWER CONVERSION AND SHALL NOT BE COPIED, REPRODUCED OR USED IN WHOLE OR IN PART, AS THE BASIS FOR THE MANUFACTURE OR SALE OF ITEMS WITHOUT WRITTEN PERMISSION FROM APC. THIS DRAWING IS BASED UPON LATEST AVAILABLE INFORMATION AND IS SUBJECT TO CHANGE WITHOUT NOTICE.

TITLE: SILCON 480kW UPS UPS CABINET, MECHANICAL 480kW, 40D/415V, 5D/60Hz	DWG NO: SLJ0480KH-MM	REV: -
PROJECT: SUBMITTAL DRAWINGS SHEET 2 OF 2	ENGINEER: S WACH	03/04/02
CHECKED: MILIND S/ K KATO	03/04/02	PROJECTION
DRAWN: JAYAPRAKASH	03/04/02	SCALE: 1:1



MODEL WITH BOTTOM CABLE ENTRY



NOTES:

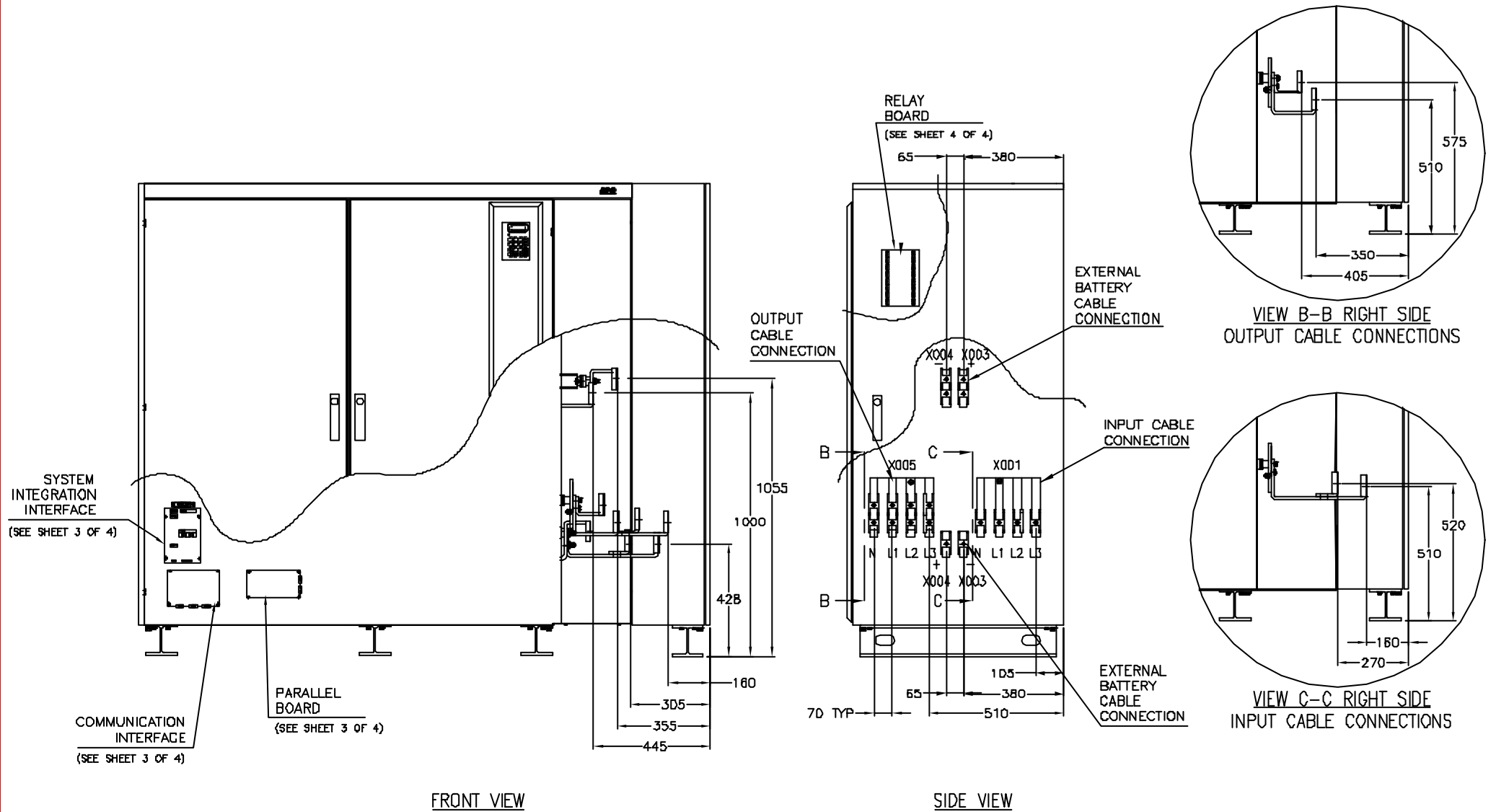
1. ALL DIMENSIONS ARE IN MILLIMETERS
2. MAXIMUM TOLERANCE $\pm 5\text{mm}$
3. LUGS PROVIDED BY OTHERS. SEE INSTALLATION MANUAL FOR SIZES
4. INSTALLATION MUST COMPLY WITH NATIONAL AND LOCAL CODES

THIS DRAWING AND SPECIFICATIONS HEREIN ARE THE PROPERTY OF AMERICAN POWER CONVERSION AND SHALL NOT BE COPIED, REPRODUCED OR USED IN WHOLE OR IN PART, AS THE BASIS FOR THE MANUFACTURE OR SALE OF ITEMS WITHOUT WRITTEN PERMISSION FROM APC. THIS DRAWING IS BASED UPON LATEST AVAILABLE INFORMATION AND IS SUBJECT TO CHANGE WITHOUT NOTICE.

TITLE:	SILCON 480kW UPS UPS CABINET, ELECTRICAL 480kW, 400/415V, 50/60Hz	DWG NO.:	SLJ0480KH-ME	REV.:	-
DRAWN:	JAYAPRAKASH	03/04/02	SCALE:	1:1	
CHECKED:	MILIND S/ K KATO	03/04/02	PROJECTION:		
PROJECT:	SUBMITAL DRAWINGS	SHEET	1 OF 4	ENGINEER:	S WACH
				03/04/02	



MODEL WITH TOP CABLE ENTRY



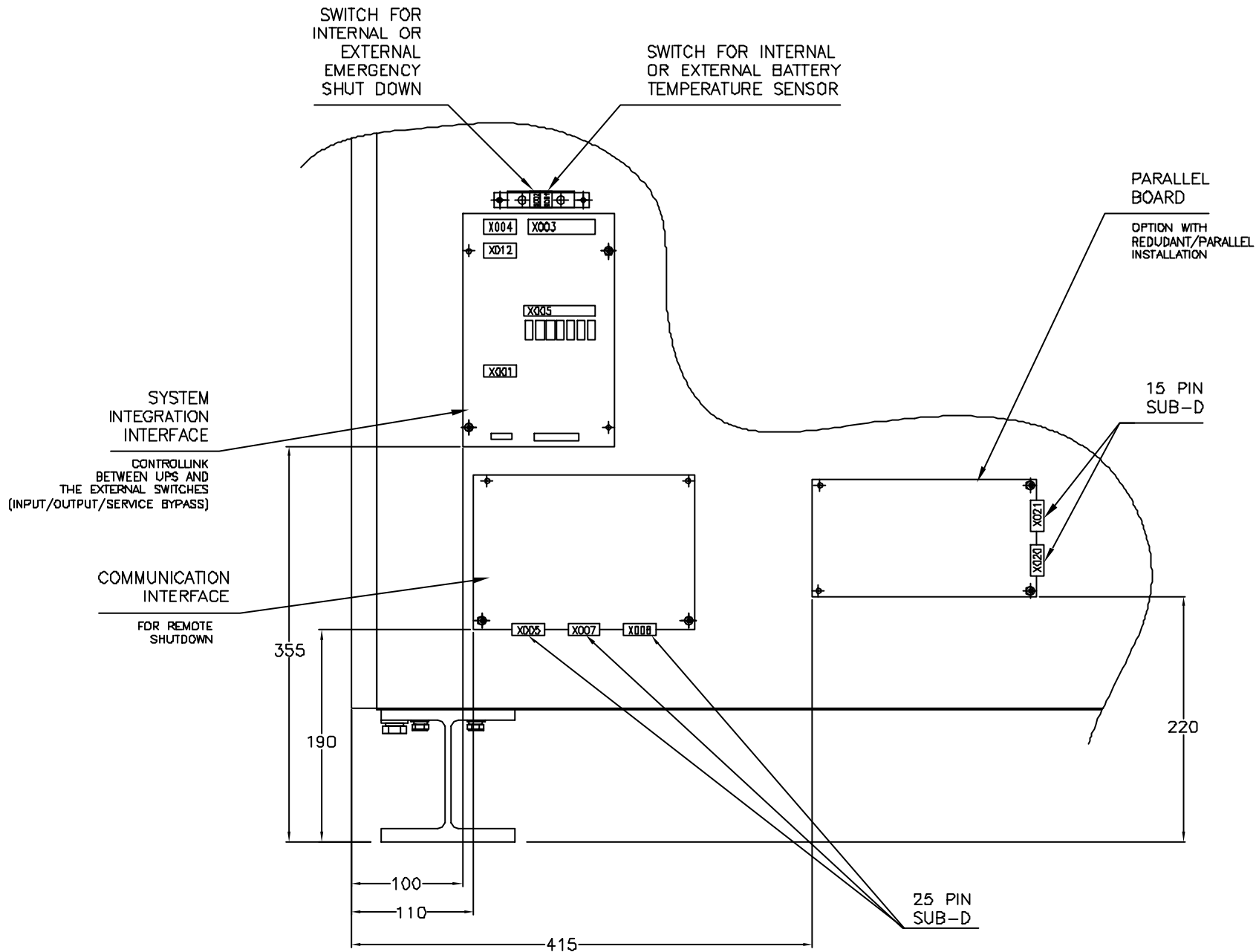
NOTES:

1. ALL DIMENSIONS ARE IN MILLIMETERS
2. MAXIMUM TOLERANCE $\pm 5\text{mm}$
3. LUGS PROVIDED BY OTHERS. SEE INSTALLATION MANUAL FOR SIZES
4. INSTALLATION MUST COMPLY WITH NATIONAL AND LOCAL CODES

THIS DRAWING AND SPECIFICATIONS HEREIN ARE THE PROPERTY OF AMERICAN POWER CONVERSION AND SHALL NOT BE COPIED, REPRODUCED OR USED IN WHOLE OR IN PART, AS THE BASIS FOR THE MANUFACTURE OR SALE OF ITEMS WITHOUT WRITTEN PERMISSION FROM APC. THIS DRAWING IS BASED UPON LATEST AVAILABLE INFORMATION AND IS SUBJECT TO CHANGE WITHOUT NOTICE.

TITLE:	SILCON 480kW UPS UPS CABINET, ELECTRICAL 480kW, 400/415V, 50/60Hz	DWG NO:	SLJ0480KH-ME	REV.	-
DRWNR:	JAYAPRAKASH	DATE:	03/04/02	SCALE:	1:1
CHECKED:	MILIND S/ K KATO	DATE:	03/04/02	PROJECTION:	
PROJECT:	SUBMITAL DRAWINGS	SHEET:	2 OF 4	ENGINEER:	S WACH
				DATE:	03/04/02





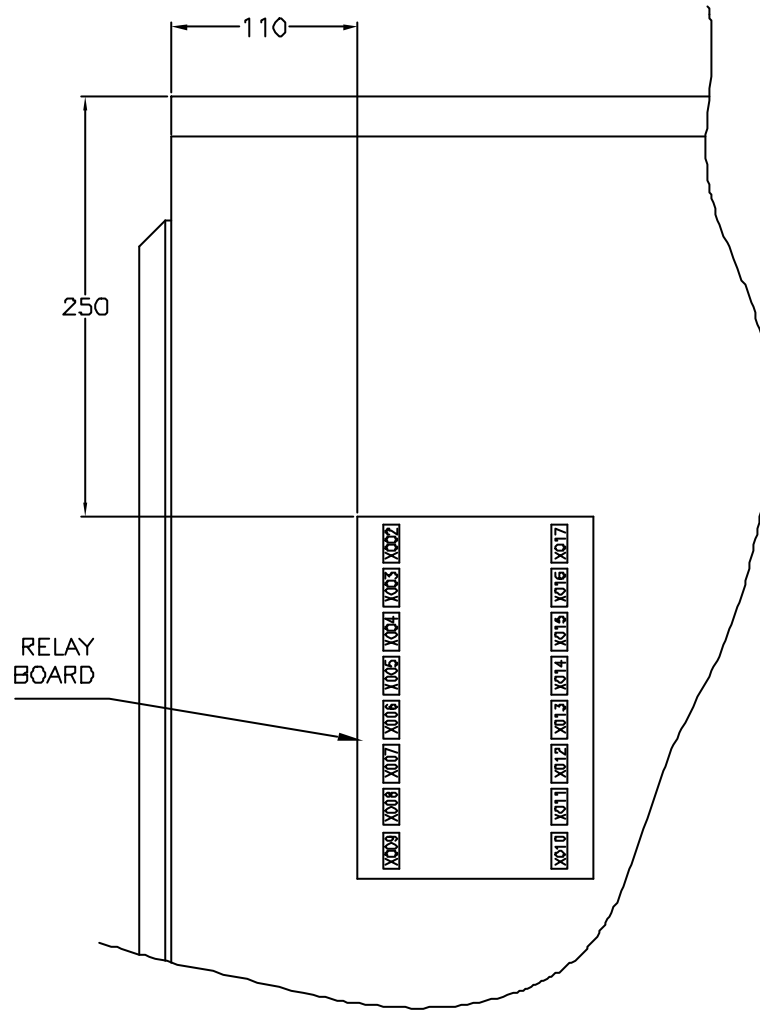
NOTES:

1. ALL DIMENSIONS ARE IN MILLIMETERS
2. MAXIMUM TOLERANCE $\pm 5\text{mm}$
3. LUGS PROVIDED BY OTHERS. SEE INSTALLATION MANUAL FOR SIZES
4. INSTALLATION MUST COMPLY WITH NATIONAL AND LOCAL CODES

THIS DRAWING AND SPECIFICATIONS HEREIN ARE THE PROPERTY OF AMERICAN POWER CONVERSION AND SHALL NOT BE COPIED, REPRODUCED OR USED IN WHOLE OR IN PART, AS THE BASIS FOR THE MANUFACTURE OR SALE OF ITEMS WITHOUT WRITTEN PERMISSION FROM APC. THIS DRAWING IS BASED UPON LATEST AVAILABLE INFORMATION AND IS SUBJECT TO CHANGE WITHOUT NOTICE.

TITLE: SILCON 480kW UPS UPS CABINET, ELECTRICAL 480kW, 400/415V, 5D/60Hz		DWG NO: SLJ0480KH-ME		REV: -
DRWNR: JAYAPRAKASH	03/04/02	SCALE: 1:1		
CHECKED: MILIND S/ K KATO	03/04/02	PROJECTION		
PROJECT: SUBMITAL DRAWINGS	SHEET 3 OF 4	ENGINEER: S WACH	03/04/02	





NOTES:

1. ALL DIMENSIONS ARE IN MILLIMETERS
2. MAXIMUM TOLERANCE $\pm 5\text{mm}$
3. LUGS PROVIDED BY OTHERS. SEE INSTALLATION MANUAL FOR SIZES
4. INSTALLATION MUST COMPLY WITH NATIONAL AND LOCAL CODES

THIS DRAWING AND SPECIFICATIONS HEREIN ARE THE PROPERTY OF AMERICAN POWER CONVERSION AND SHALL NOT BE COPIED, REPRODUCED OR USED IN WHOLE OR IN PART, AS THE BASIS FOR THE MANUFACTURE OR SALE OF ITEMS WITHOUT WRITTEN PERMISSION FROM APC. THIS DRAWING IS BASED UPON LATEST AVAILABLE INFORMATION AND IS SUBJECT TO CHANGE WITHOUT NOTICE.

TITLE: SILCON 480kW UPS
UPS CABINET, ELECTRICAL
480kW, 400/415V, 50/60Hz

DWG NO: SLJ0480KH-ME	REV. -
DRAWN: JAYAPRAKASH	03/04/02 SCALE: 1:1
CHECKED: MILIND S/ K KATO	03/04/02 PROJECTION
ENGINEER: S WASH	03/04/02



PROJECT: SUBMITTAL DRAWINGS **SHEET** 4 OF 4