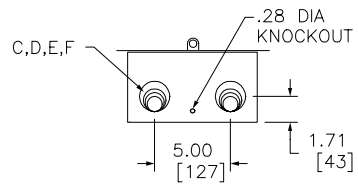
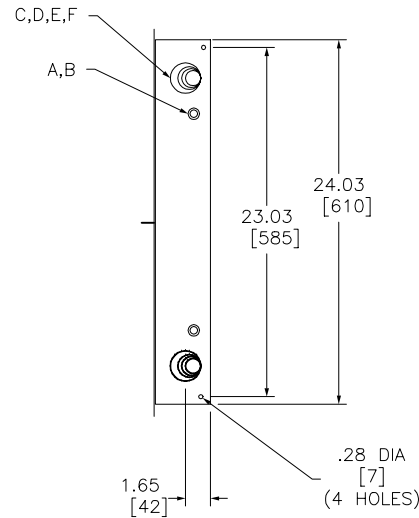
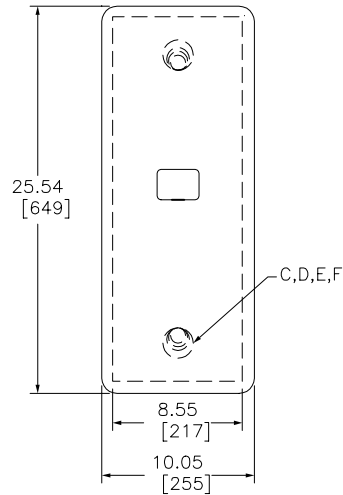
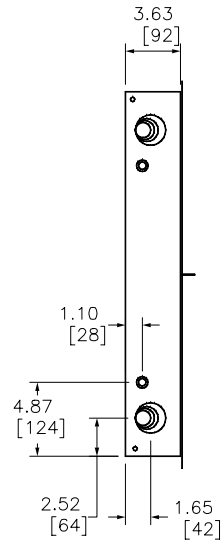


KNOCKOUTS

SYMBOL	CONDUIT SIZE		DIAMETER	
	IN	MM	IN	MM
A	.50	13	.88	22
B	.75	19	1.13	29
C	1.00	25	1.38	35
D	1.25	32	1.75	45
E	1.50	38	2.00	51
F	2.00	51	2.50	64

TERMINAL LUG DATA ‡

CATALOG NUMBER	AMPERE RATING	NUMBER OF TERMINALS	WIRE SIZE (AWG/KCMIL)		WIRE TYPE
			MIN	MAX	
QOM2	100-225A	4	#4	250	AL OR CU
NEUTRAL	225A	2	#4	250	AL OR CU
		4	#12	2/0	AL
PKOGTA-2	-	2	#14	2/0	CU
			#10	2/0	CU
			#6	2/0	AL



QOM2-2225NF
NEMA TYPE 1

DUAL DIMENSIONS: INCHES
MILLIMETERS

FIELD INSTALLABLE CIRCUIT BREAKER DATA

CATALOG NUMBER PREFIX	WIRING DIAGRAM	AMPERE RATING	UL LISTED AIR RATING
QOM2	A	100-225A	22K

NOTES:
FINISH - GRAY BAKED ENAMEL ELECTRODEPOSITED OVER CLEANED PHOSPHATIZED STEEL.
UL LISTED - FILE **E-136861**
SUITABLE FOR USE AS SERVICE EQUIPMENT.
22,000 RMS SYM AMPERE SHORT CIRCUIT CURRENT RATING
NEUTRAL FACTORY INSTALLED.
GROUND BAR PKOGTA-2 INCLUDED.
‡ LUGS SUITABLE FOR 60°C OR 75°C CONDUCTORS.

CIRCUIT BREAKER ENCLOSURES
100-225 AMPERE
NEMA TYPE 1 GENERAL PURPOSE ENCLOSURE

SQUARE D COMPANY

DWG# 3222
NO.