

## ASCO 5150 Connectivity Module (Acc 72E) - Technical Specification

### **Specification**

Power Source:

ASCO Controllers Group 5, Group 1 or Power Manager

Communication ports:

- 1 RJ 45 10BaseT
- 1 RS-485 (4 Wire)
- 2 TTL ports

External Power:

24VDC nominal

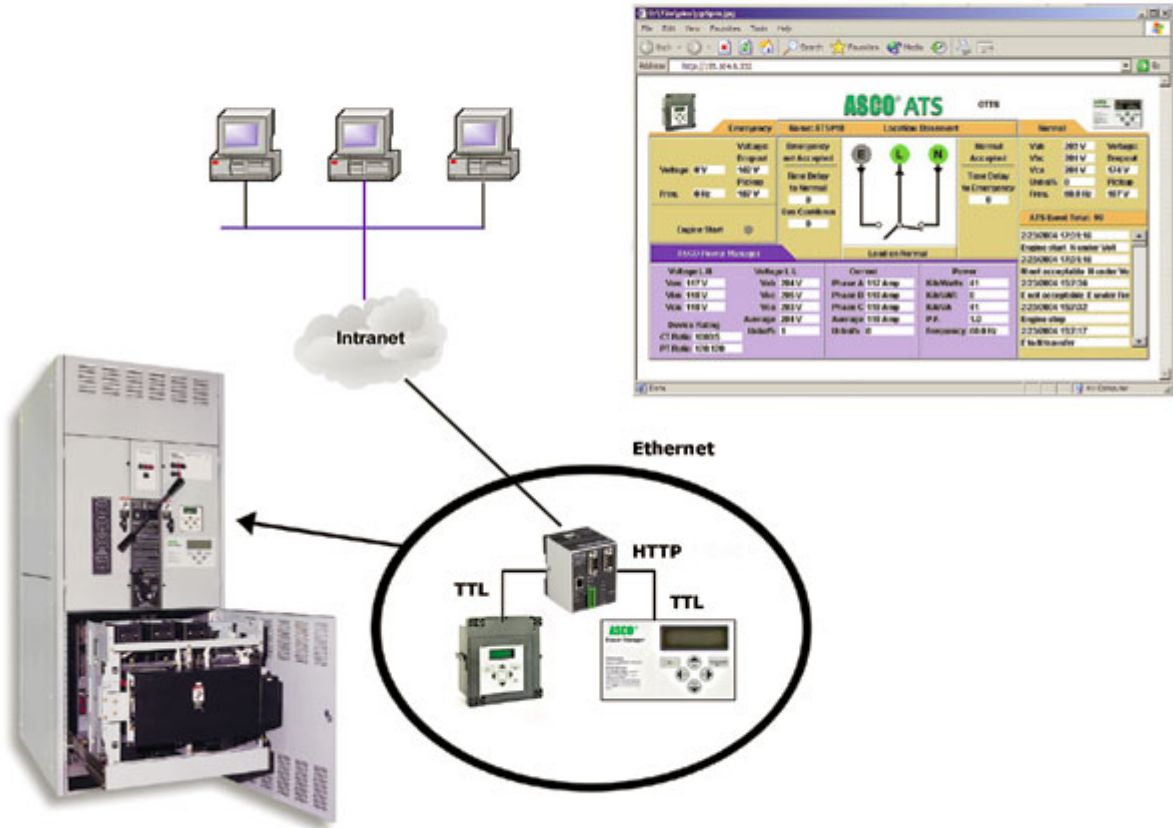
Operating Temperature:

32-140°F (0-60°C)

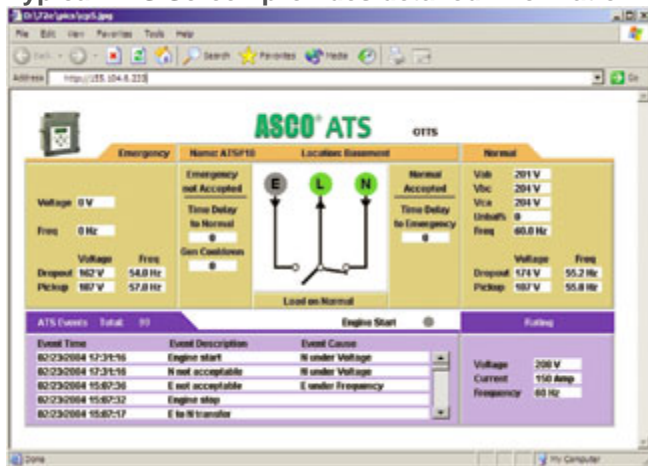
Size: 2 ¾ in W, 3 ½ in H, 3 in D

(7 cm W, 8.9 cm, 7.62 cm D)

### **Typical Transfer Switch and Power Manager Monitoring Application**

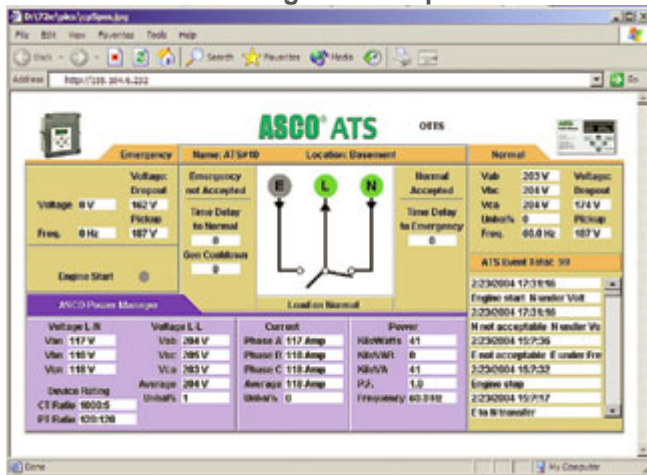


Typical ATS Screen provides detailed information on each switch



- One line diagram showing transfer switch and load status
- Voltage and frequency of both power sources
- Time Delay Settings
- Voltage and frequency pickup and dropout settings
- Switch name tags and installation locations
- Event log details, including date and time stamp
- Engine start signal annunciation

**ATS with Power Manager screen provides additional detailed information**



- Phase voltage and current readings
- Average and voltage unbalance
- KW, KVAR, KVA, and Power Factor data
- Name assignment and status of eight digital inputs and for relay outputs
- CT and PT ratios