

# SPW 100 Series



## Product Description

SPW Differential Wet Pressure Transmitters utilise well proven ceramic technology. They have a low sensitivity to change in temperature and a high resistance to extreme temperatures.

Total of linearity, hysteresis and repeatability  $\pm 1.25\%$  fs max. in accordance with DIN EN 60770-1.

Supplied complete with mounting bracket, screws and female connector with seal.

## Features

- Ceramic sensor technology
- Very low temperature sensitivity
- High resistance to extreme temperatures
- No mechanical creepage
- Optional LCD display models
- Suitable for liquids and neutral gases

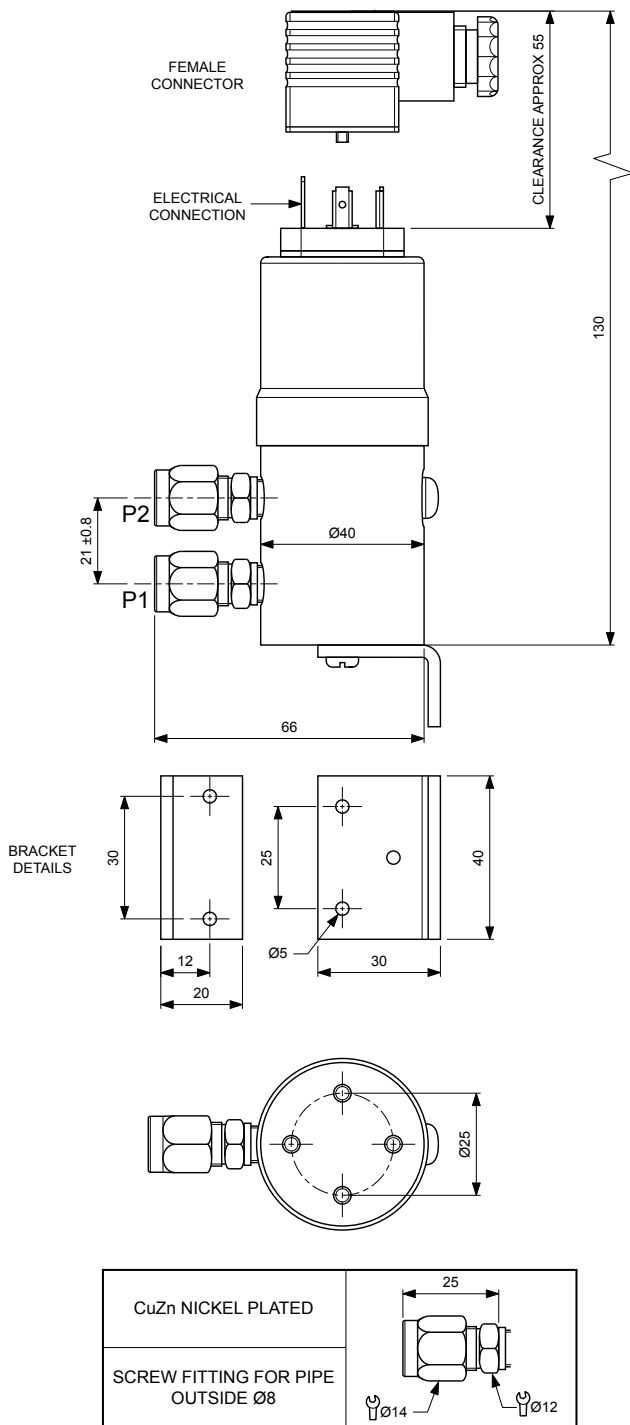
## Available Products

Part Number	Model Number	LCD Display	Differential Pressure	Tolerable Overload on One Side	
				P1 Max	P2 Max
6552047000	SPW100	No	0 to 0.5 bar	3 bar	3 bar
6552059000	SPW100-D	Yes	0 to 0.5 bar	3 bar	3 bar
6552048000	SPW102	No	0 to 1.0 bar	5 bar	5 bar
6552060000	SPW102-D	Yes	0 to 1.0 bar	5 bar	5 bar
6552049000	SPW104	No	0 to 1.6 bar	12 bar	12 bar
6552061000	SPW104-D	Yes	0 to 1.6 bar	12 bar	12 bar
6552050000	SPW106	No	0 to 2.5 bar	12 bar	12 bar
6552062000	SPW106-D	Yes	0 to 2.5 bar	12 bar	12 bar
6552051000	SPW108	No	0 to 4.0 bar	12 bar	12 bar
6552063000	SPW108-D	Yes	0 to 4.0 bar	12 bar	12 bar
6552052000	SPW110	No	0 to 6.0 bar	12 bar	12 bar
6552064000	SPW110-D	Yes	0 to 6.0 bar	12 bar	12 bar
6552053000	SPW112	No	0 to 10 bar	20 bar	20 bar
6552065000	SPW112-D	Yes	0 to 10 bar	20 bar	20 bar
6552054000	SPW114	No	0 to 16 bar	32 bar	32 bar

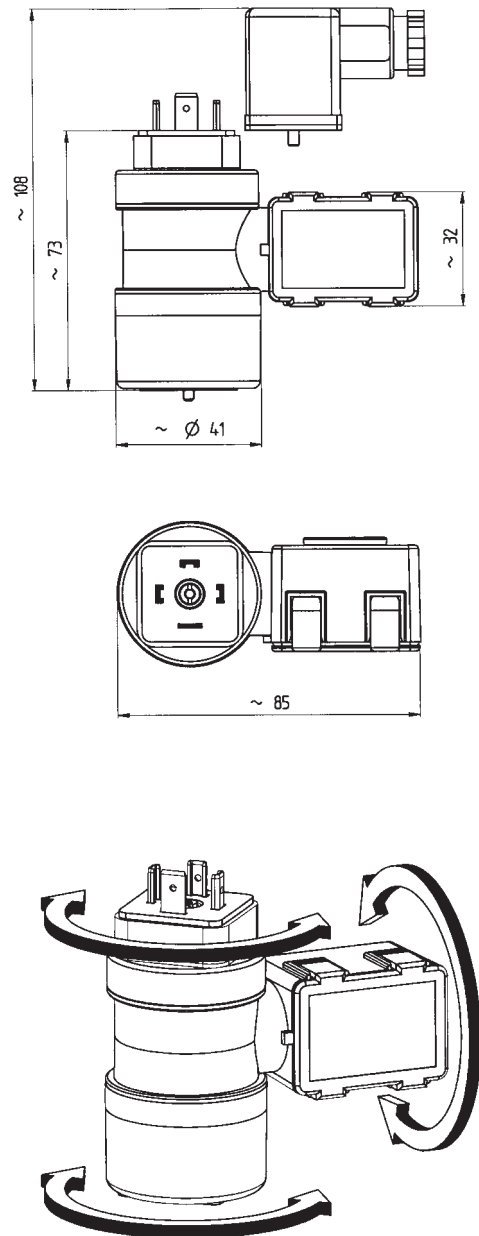
## Specifications

Input voltage	18 ... 33 Vdc, 24 Vac $\pm 15\%$
Output	0 ... 10 Vdc, 3-wire cable
Load	>10K Ohms
Current consumption	<5 mA
Plug accessory	DIN EN 175301-803-A
Pipe connection	CuZn nickel plated for pipe outside diameter 8 mm
Case	Stainless steel 1.4305
Enclosure rating	IP65 (when fitted with seal)
Medium	Liquid and neutral gases
Sealing material	FPM fluoro-elastomer

Dimensions (mm)



LCD Display (mm)



**NOTICE**

- This product is not intended for life or safety applications.
- Do not install this product in hazardous or classified locations.
- Read and understand the instructions before installing this product.
- Turn off all power supplying equipment before working on it.
- The installer is responsible for conformance to all applicable codes.

No responsibility is assumed by Schneider Electric for any consequences arising out of the use of this material.