

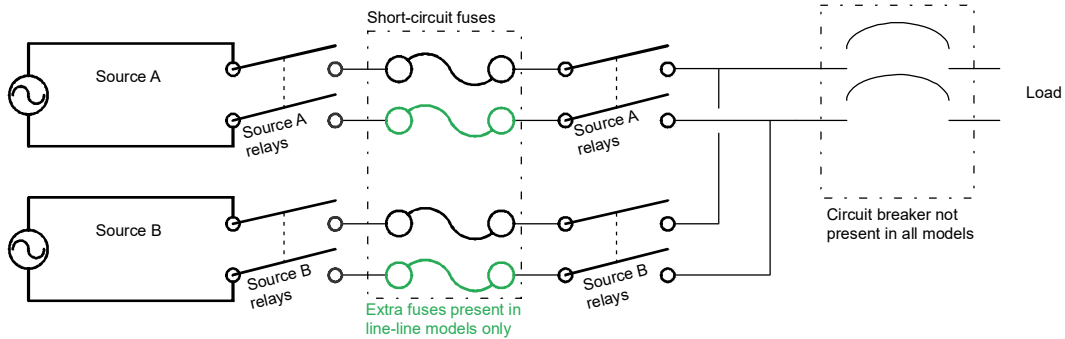
Automatic Transfer Switch AP4424

Overview

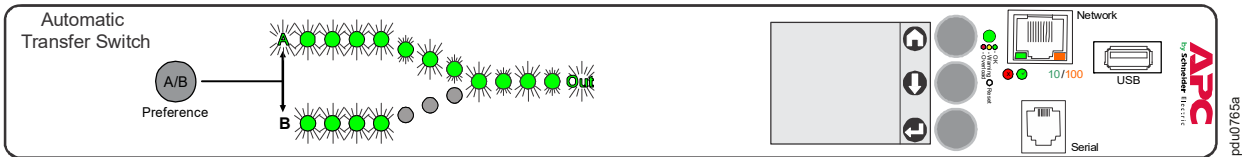
The APC by Schneider Electric Rack Automatic Transfer Switch (ATS) provides reliable, redundant power to single-corded equipment loads, such as servers. The Rack ATS has two input power cords supplying power to the connected loads. If the primary source becomes unavailable or out of the selected range, the Rack ATS will seamlessly source power from the secondary source without interrupting critical loads.

The Rack ATS has built-in network connectivity, which allows for remote management via Web, Telnet, SNMP, SSH or StruxureWare Data Center Expert® interfaces.

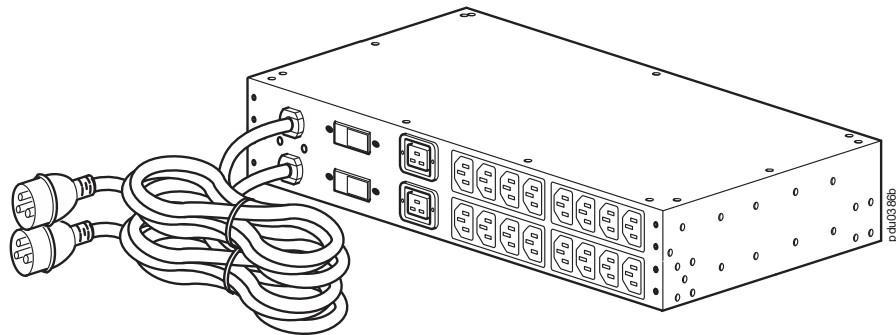
ATS schematic



Front



Rear



Input power cords: The two cords connect the ATS to two separate power sources (A, B). The switch draws power from the preferred source and automatically switches to the secondary source when necessary. The two (2) 2.44-m (8-ft) power cords have IEC-309 32 A plugs.

Outlets: The outlets connect the ATS to equipment in the rack or enclosure, providing a redundant source of power to the connected equipment. Each switch has sixteen (16) C13 outlets and two (2) C19 outlets.

Circuit breakers: The ATS is protected by two (2) 16 A single-pole circuit breakers.

Specifications

Electrical	
Nominal input voltage	230 Vac
Acceptable input voltage	±10% of nominal
Input frequency	50/60 Hz
Input connectors	Two (2) 2.44-m (8-ft) IEC-309 32 A power cords
Output connectors	Sixteen (16) C13 outlets, Two (2) C19 outlets
Maximum output current	10 A–C13 outlets
	16 A–C19 outlets
	16 A–bank
	10 A–gang
Maximum output/input current	32 A
Overload protection	
Internal	Two (2) 16 A single-pole circuit breakers
External (recommended)	32 A facility provided
Transfer time	10 ms maximum (high sensitivity, 50–60 Hz) 12 ms maximum (low sensitivity, 50–60 Hz)
Short circuit current rating	10 kA
Physical	
Dimensions (H x W x D)	88.1 x 431.8 x 236.2 mm (3.47 x 17.00 x 9.30 in)
Shipping dimensions (H x W x D)	209.5 x 584.2 x 355.6 mm (8.25 x 23.00 x 14.00 in)
Weight	6.94 kg (15.30 lb)
Shipping weight	9.43 kg (20.80 lb)
Environmental	
Maximum elevation (above MSL)	
Operating	0 to 3000 m (0 to 10,000 ft)
Storage	0 to 15 000 m (0 to 50,000 ft)
Temperature	
Operating	–5 to 45°C (23 to 113°F)
Storage	–25 to 65°C (–13 to 149°F)
Humidity	
Operating	5 to 95%, non-condensing
Storage	5 to 95%, non-condensing
Compliance	
EMC	EMC Directive 2014/30/EU
Safety	UL - EU / CE UL/EN/IEC 62368-1 LVD 2014/35/EU
Approved for IT Power Systems	Yes

Customer support and warranty information are available on the website, www.apc.com.