

## **Read Me**

### **eXLhoist Configuration Software V4.0.14**

**Please read the complete document before you start the installation and operation of the product.**

Schneider Electric assumes no responsibility for any errors that may appear in this document. If you have any suggestions for improvements or amendments or have found errors in this publication, please notify us. No part of this document may be reproduced in any form or by any means, electronic or mechanical, including photocopying, without express written permission of Schneider Electric. All pertinent state, regional, and local safety regulations must be observed when installing and using this product. For reasons of safety and to help ensure compliance with documented system data, only the manufacturer should perform repairs to components. When devices are used for applications with technical safety requirements, the relevant instructions must be followed. Failure to use Schneider Electric software or approved software with our hardware products may result in injury, harm, or improper operating results. Failure to observe this information can result in injury or equipment damage.

**© 2016 Schneider Electric. All rights reserved.**

## 1. eXLhoist Configuration Software V4.0.14

eXLhoist Configuration Software is user-friendly setup software for PCs, for setting up of Schneider Electric ZART remote devices. eXLhoist Configuration Software incorporates various functions for the remote setup phases, such as Configuration preparation, Start-up and Maintenance.

### Products supported

ZART8L, ZART8D and ZART12D

## 2. System Platforms

eXLhoist Configuration Software can be installed on different Windows® platforms using the same setup package. The setup will detect the platform and the specific installation requirements automatically. The following Windows® platforms are supported:

- Windows® 7 32/64-Bit
- Windows® Server 2012 R2 32/64-Bit
- Windows® 10 32/64-Bit

## 3. Minimum Resource Requirements

Please verify that the target system meets the following minimum requirements:

- Dual core processor
- RAM: 2 GB
- Required disk space: 2 GB
- Windows® 7 Pro 32 bits

## 4. Software Pre Requisites

Following pre-requisites are installed when you start the setup.exe, if they are not present on the computer.

- **Microsoft.NET Framework 3.5 SP1**
- **Microsoft.NET Framework 4.0**
- **VC++ 2005 SP1 Runtime**
- **Modbus Driver Suite V14.9**

**Adobe version 8.0** and above recommended for viewing the generated data file.

## 5. Child Installations

### 5.1 Schneider Electric eXLhoist DTM Library V4.0.14

Schneider Electric eXLhoist DTM Library is a child installer of eXLhoist Configuration Software, software component for eXLhoist DTM.

### Program Group

The installation will not add any folder in the Programs group off the Start menu because the eXLhoist DTM Library can only be used inside an FDT Frame Application

### Directories

By default, eXLhoist DTM Library will be installed in the directory.

- <CommonProgramFiles>
- Schneider Electric Shared
- Schneider Electric eXLhoist DTM Library

## 5.2 Modbus Communication DTM Library V 2.6.0

Schneider Electric Modbus DTM Library is a child installer of eXLhoist Configuration Software, software component for Modbus COM DTM.

ModbusDtmLibrary V 2.6.0  
- MB Serial Communication DTM V 2.6.0  
- MB TCP Communication DTM V 2.6.0

### Program Group

The installation will not add any folder in the Programs group of the Start Menu because the Modbus Communication DTM Library can only be used inside an FDT Frame Application.

### Directories

By default, Modbus Communication DTM Library will be installed in the directory.

- <CommonProgramFiles>
- Schneider Electric Shared
- Modbus Communication DTM Library
  - Modbus Serial Line CommDTM
  - Modbus TCP CommDTM

where <CommonProgramFiles> depends on the settings of your computer. In a default system installation, this directory is usually "C:\Program Files\Common Files\ ". The default setting can be modified at the time of installation to meet your specific requirements.

## 6. Installation Preparation

Executing the setup file will extract the appropriate set of files on the local hard drive. It will then start the installation automatically. Before starting the installation, perform the following checks and preparations:

- Close running FDT applications before starting the setup program.
- You must be logged in with a user ID having administrator/equivalent privileges in order to install the eXLhoist Configuration Software.

## 7. Uninstall, Repair

Invoking the installation procedure of the eXLhoist Configuration Software again will result in a slightly different way of presentation offering to uninstall or to repair the existing setup.

## 8. Functions

- Create offline project with the decentralized ZART device
- Connect to the remote device
- Save Project
- Open saved project
- Configuration export to PDF file
- Printing
- Upload configuration
- Download configuration

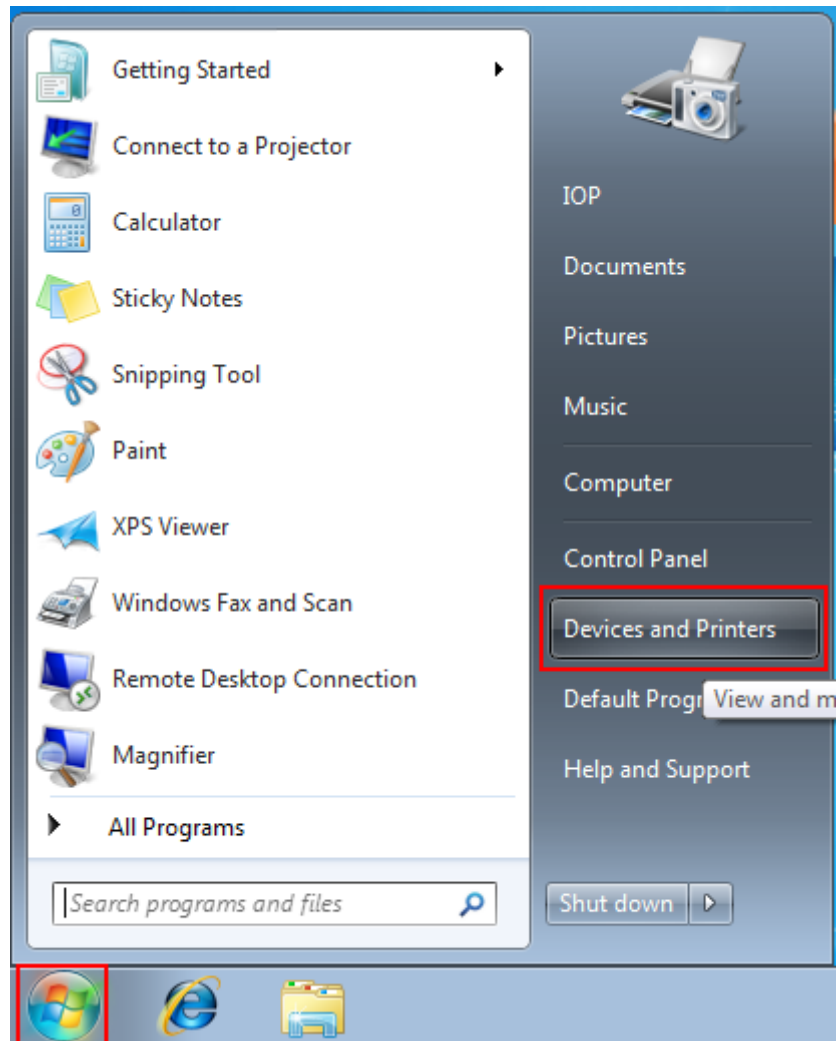
## 9. TCSMCNAM3M002P Cable Installation on Windows 7 32bits and 64 bits



By default, Windows 7 automatically installs drivers for the devices that are connected to the computer. When TCSMCNAM3M002P Cable is connected for the first time, it takes more than 5 minutes to install the drivers and create the virtual USB ports.

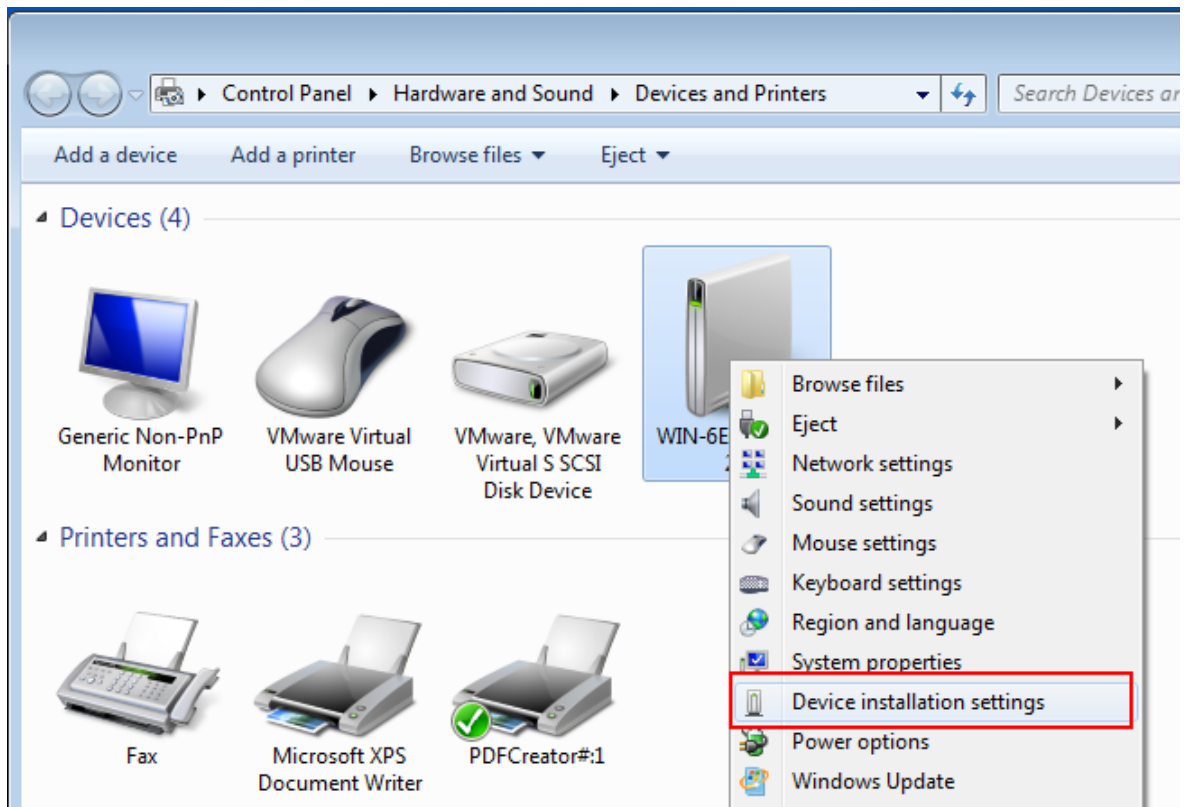
To improve the installation and creation time of the virtual COM port, please follow the bellow instruction:

1. Do not connect the cable in the USB port of the PC before installation of the “eXLhoist Configuration Software” is finished. Cable driver is installed automatically during the “eXLhoist Configuration Software” installation.
2. Install the “eXLhoist Configuration Software” by launching the setup.exe from the installation media.
3. Click **Start**, Click **Devices and Printers** from the **Start** menu.



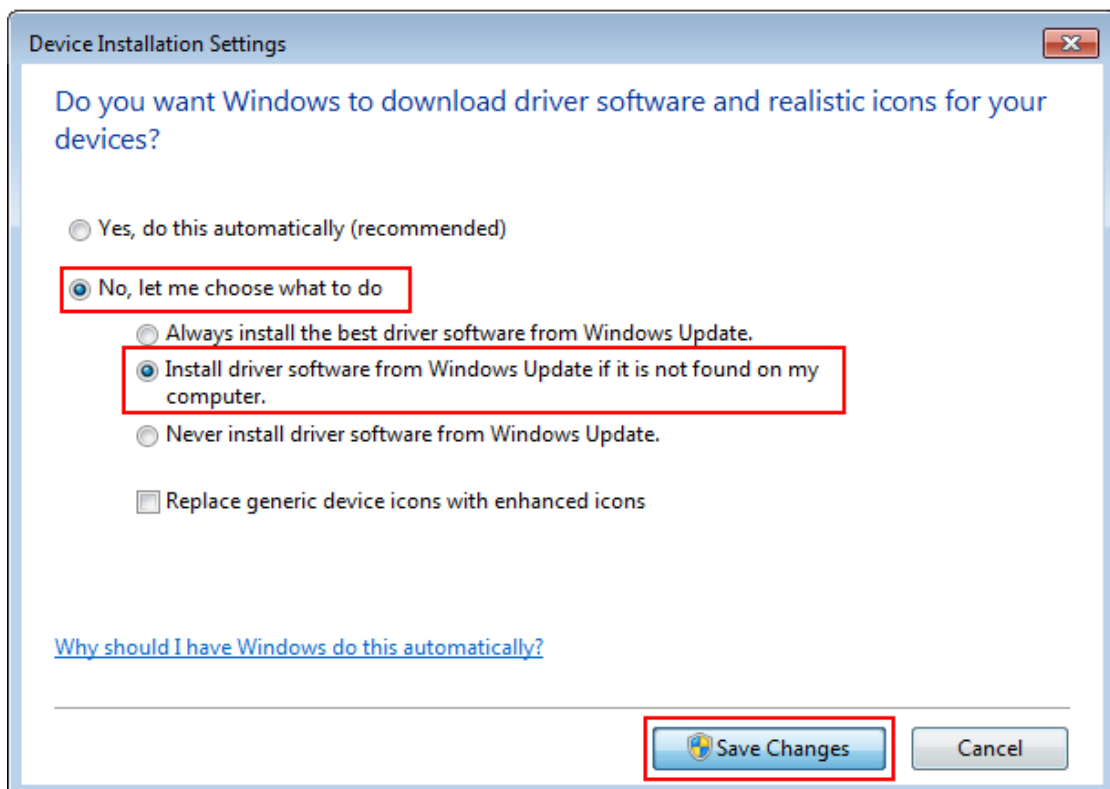
4. All the devices connected to the computer are listed, including monitor, keyboard, mouse, printer, and so on.

Under **Devices**, right-click the icon for the computer, and then click **Device installation settings**.



5. A new window pops up asking you whether you want Windows to download driver software.

Click to select **No, let me choose what to do**, select **Install driver software from Windows Update if it is not found on my computer.** and then click **Save Changes**.

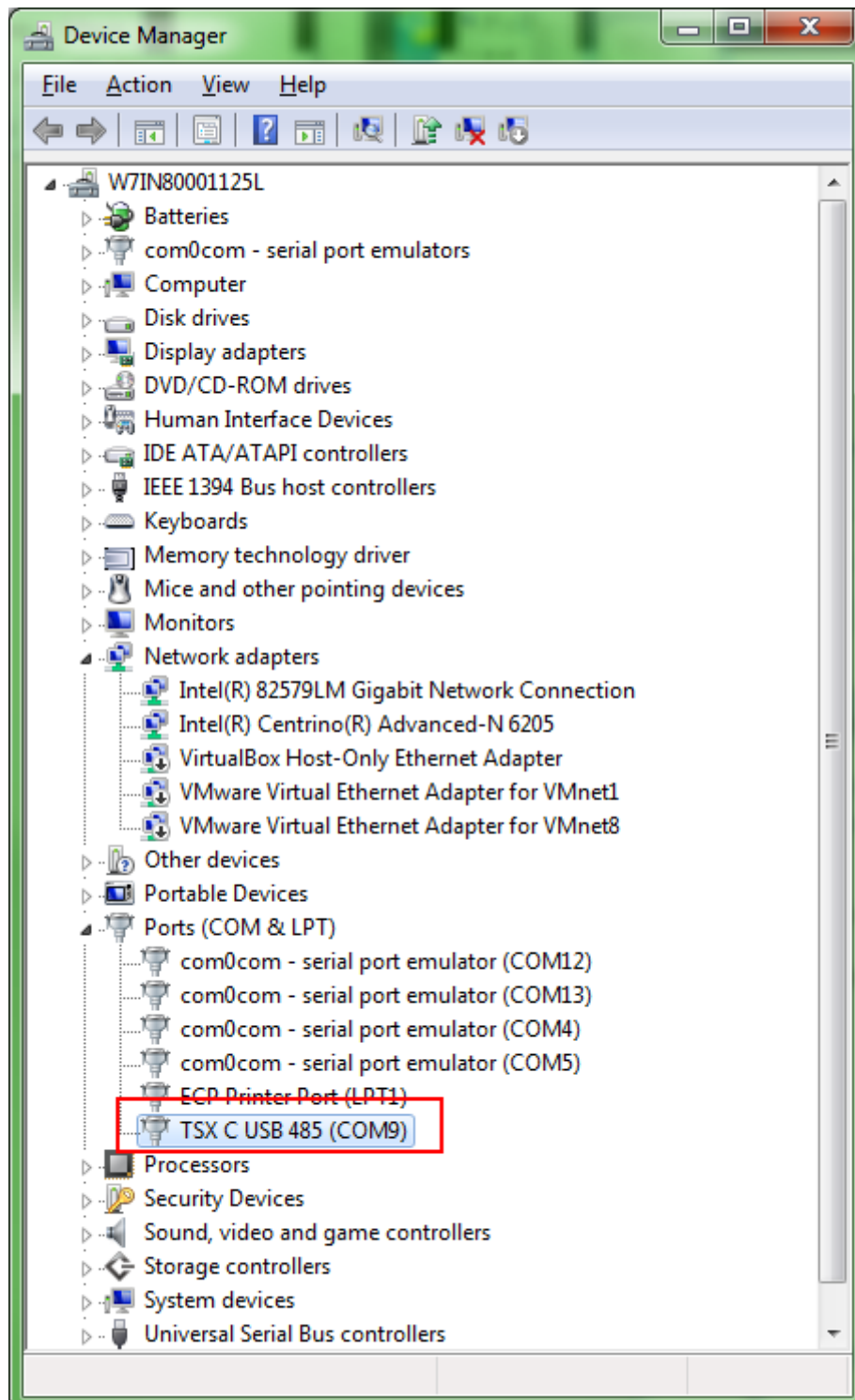


6. Click **Yes** when you are prompted for confirmation
7. Once the “eXLhoist Configuration Software” installation is complete, connect the TCSMCNAM3M002P Cable to the USB port of the PC. Check the COM Port created in the **Device Manager**

Click **Start**, type **Device Manager** in the search box, and then click the **Device Manager**.

Device Manager lists all the device's installed on the PC.

Check in the **Ports (COM & LT)** section to identify the created virtual COM Port [ TSX C USB 485 (COMxx) ] In following screen shot the COM number is 10 as an example but it can be any other number.



## 10. Restrictions

eXLhoist Configuration Software will not run properly if Chinese fonts are not available in the system. You need to relaunch the application and the language will be English by default.