

EcoStruxure Machine Expert V1.1 SP1 Release Notes

10/2019



RN0000000001.01

www.schneider-electric.com

Schneider
Electric™

The information provided in this documentation contains general descriptions and/or technical characteristics of the performance of the products contained herein. This documentation is not intended as a substitute for and is not to be used for determining suitability or reliability of these products for specific user applications. It is the duty of any such user or integrator to perform the appropriate and complete risk analysis, evaluation and testing of the products with respect to the relevant specific application or use thereof. Neither Schneider Electric nor any of its affiliates or subsidiaries shall be responsible or liable for misuse of the information contained herein. If you have any suggestions for improvements or amendments or have found errors in this publication, please notify us.

You agree not to reproduce, other than for your own personal, noncommercial use, all or part of this document on any medium whatsoever without permission of Schneider Electric, given in writing. You also agree not to establish any hypertext links to this document or its content. Schneider Electric does not grant any right or license for the personal and noncommercial use of the document or its content, except for a non-exclusive license to consult it on an "as is" basis, at your own risk. All other rights are reserved.

All pertinent state, regional, and local safety regulations must be observed when installing and using this product. For reasons of safety and to help ensure compliance with documented system data, only the manufacturer should perform repairs to components.

When devices are used for applications with technical safety requirements, the relevant instructions must be followed.

Failure to use Schneider Electric software or approved software with our hardware products may result in injury, harm, or improper operating results.

Failure to observe this information can result in injury or equipment damage.

© 2019 Schneider Electric. All rights reserved.

Table of Contents



	Safety Information	5
	About the Book	7
Chapter 1	Product Information	9
	Product Information	10
	Installation Instructions	12
Chapter 2	Hardware/Firmware Information	13
	Hardware/Firmware Information	14
	Mitigated Anomalies	16
	Known Operational Anomalies	18
Chapter 3	Library Information	25
	Library Information	26
	Mitigated Anomalies	28
	Known Operational Anomalies	29
Chapter 4	Software Information	31
	Software Information	32
	Compatibility EcoStruxure Machine Expert	33
	Mitigated Anomalies	34
	Known Operational Anomalies	36
Chapter 5	Additional Information	39
	Mitigated Anomalies	40
	Known Operational Anomalies	41
Chapter 6	Release Notes History	43
6.1	EcoStruxure Machine Expert V1.1	44
	Hardware/Firmware Information	45
	New Features	47
	Mitigated Anomalies	53
	Known Operational Anomalies	55
	Library Information	60
	New Features	62
	Mitigated Anomalies	68
	Known Operational Anomalies	69
	Software Information	70
	New Features for Machine Expert Installer and Online Help	71
	New Features EcoStruxure Machine Expert	72
	New Features for EcoStruxure Machine Expert - Safety	75

Compatibility EcoStruxure Machine Expert	76
Compatibility EcoStruxure Machine Expert - Safety	82
Mitigated Anomalies	84
Known Operational Anomalies	96
Documentation - Mitigated Anomalies	101
Documentation - Known Operational Anomalies	102

Safety Information



Important Information

NOTICE

Read these instructions carefully, and look at the equipment to become familiar with the device before trying to install, operate, service, or maintain it. The following special messages may appear throughout this documentation or on the equipment to warn of potential hazards or to call attention to information that clarifies or simplifies a procedure.



The addition of this symbol to a “Danger” or “Warning” safety label indicates that an electrical hazard exists which will result in personal injury if the instructions are not followed.



This is the safety alert symbol. It is used to alert you to potential personal injury hazards. Obey all safety messages that follow this symbol to avoid possible injury or death.

DANGER

DANGER indicates a hazardous situation which, if not avoided, **will result in** death or serious injury.

WARNING

WARNING indicates a hazardous situation which, if not avoided, **could result in** death or serious injury.

CAUTION

CAUTION indicates a hazardous situation which, if not avoided, **could result in** minor or moderate injury.

NOTICE

NOTICE is used to address practices not related to physical injury.

PLEASE NOTE

Electrical equipment should be installed, operated, serviced, and maintained only by qualified personnel. No responsibility is assumed by Schneider Electric for any consequences arising out of the use of this material.

A qualified person is one who has skills and knowledge related to the construction and operation of electrical equipment and its installation, and has received safety training to recognize and avoid the hazards involved.

About the Book



At a Glance

Document Scope

This document contains important information about the hardware/firmware/software delivery of the product EcoStruxure Machine Expert V1.1 SP1, and the history of previous Release Notes. Read the complete document before you use the product or products that are described in here.

NOTE: EcoStruxure Machine Expert V1.1 SP1 is not a full product installation. It can only be installed as an enhancement if a full installation of EcoStruxure Machine Expert V1.1 is available on your PC.

Validity Note

The information in this Release Notes document is applicable only for EcoStruxure Machine Expert compatible products.

This document has been updated for the release of EcoStruxure™ Machine Expert V1.1 SP1.

The technical characteristics of the devices described in the present document also appear online. To access the information online:

Step	Action
1	Go to the Schneider Electric home page www.schneider-electric.com .
2	In the Search box type the reference of a product or the name of a product range. <ul style="list-style-type: none">● Do not include blank spaces in the reference or product range.● To get information on grouping similar modules, use asterisks (*).
3	If you entered a reference, go to the Product Datasheets search results and click on the reference that interests you. If you entered the name of a product range, go to the Product Ranges search results and click on the product range that interests you.
4	If more than one reference appears in the Products search results, click on the reference that interests you.
5	Depending on the size of your screen, you may need to scroll down to see the datasheet.
6	To save or print a datasheet as a .pdf file, click Download XXX product datasheet .

The characteristics that are presented in the present document should be the same as those characteristics that appear online. In line with our policy of constant improvement, we may revise content over time to improve clarity and accuracy. If you see a difference between the document and online information, use the online information as your reference.

Chapter 1

Product Information

What Is in This Chapter?

This chapter contains the following topics:

Topic	Page
Product Information	10
Installation Instructions	12

Product Information

Overview

EcoStruxure Machine Expert

EcoStruxure Machine Expert is a unique solution software for developing, configuring, and commissioning the entire machine in a single software environment, including logic, motion control, HMI, and related network automation functions.

EcoStruxure Machine Expert - Safety

EcoStruxure Machine Expert - Safety is a component of EcoStruxure Machine Expert. It is an engineering tool used to develop safety-related applications for the Safety Logic Controller TM5CSLC•00FS.

The application is based on the standard IEC 61131-3 and meets the applicable safety-related requirements of IEC 61508. It provides the components necessary for the different development phases of a Safety Logic Controller application.

Product Identification

Reference	Description
EcoStruxure Machine Expert	V1.1 SP1
EcoStruxure Machine Expert - Safety V1.1 Safety Plugin (SafeLogger, Safety Offline Help)	V1.1.33.6454 (5.1.35.6507)

Release History

Version	Release Date	Description
V1.1	July 2019	EcoStruxure Machine Expert V1.1
V1.1 SP1	October 2019	EcoStruxure Machine Expert V1.1 SP1

System Requirements

NOTE: EcoStruxure Machine Expert V1.1 SP1 is not a full product installation. It can only be installed as an enhancement if a full installation of EcoStruxure Machine Expert V1.1 is available on your PC.

EcoStruxure Machine Expert can be installed on a personal computer with the following hardware:

- Processor Core 2 Duo or greater
- RAM Memory 4 GB minimum, 8 GB recommended or greater
- Hard disk 8 GB for typical and 15 GB for full software installation
- Display 1280 x 1024 resolution or greater
- Mouse or compatible pointing device

- USB interface
- Internet access

EcoStruxure Machine Expert V1.1 SP1 can be installed on the following operating systems:

- Microsoft Windows 7 SP1 Professional Edition (64 Bit)
- Microsoft Windows 8.1 Professional Edition (64 Bit)
- Microsoft Windows 10 (64 Bit)

NOTE: Some components still support 32 Bit operating systems (see the following table).

Software	Supported OS
EcoStruxure Machine Expert	64 Bit
EcoStruxure Machine Expert - Safety	32 Bit & 64 Bit
Machine Expert Installer	32 Bit & 64 Bit
SQL gateway	32 Bit & 64 Bit
Gateway	32 Bit & 64 Bit
Device Assistant	32 Bit & 64 Bit
Diagnostics	32 Bit & 64 Bit
Controller Assistant	32 Bit & 64 Bit
Motion Sizer	32 Bit & 64 Bit

Microsoft.NET Framework

EcoStruxure Machine Expert requires the .NET Framework 4.7.2. Therefore, it is required to have a current Windows version on your system. If a previous version is found on your current Windows version, EcoStruxure Machine Expert will install the required version.

EcoStruxure Machine Expert was tested using the following Windows versions:

Version	Version Name
6.1.7601	Windows 7 SP1
6.3.9600	Windows 8.1
10.0.14393	Windows 10

EcoStruxure Machine Expert - Safety, DTM and Cognex require the Microsoft.NET Framework 3.5 Service Pack 1 with the latest updates.

This package is not installed with Windows 8.1 or Windows 10. An internet connection is required to install Microsoft.NET Framework 3.5.

For information on how to install it, refer to <https://msdn.microsoft.com/en-US/library/hh506443>.

The .NET Framework 3.5 Service Pack 1 is included in Windows 7 Service Pack 1 or later.

Installation Instructions

Overview

The Machine Expert Installer is used for configuring and installing the EcoStruxure Machine Expert software. For information on the installation procedure, refer to the Machine Expert Installer User Guide (*see Machine Expert Installer, User Guide*).

Limitations on USB Driver Installation for M241/M251 Controllers

In some cases, this driver installation is incomplete. The controller is shown with a yellow triangle in the **Device Manager**.

You can solve this issue by manually installing the USB driver for the marked device. The driver is available in directory *C:\Program Files (x86)\Schneider Electric\EcoStruxure Machine Expert\Tools\Gateway\Driver\USB PLC Driver\Win7_x64 for x64 systems* and in directory *C:\Program Files (x86)\Schneider Electric\EcoStruxure Machine Expert\Tools\Gateway\Driver\USB PLC Driver\Win7_x86 for x86 systems*.

Limitations on Installation with Vijeo-Designer

If you update Vijeo-Designer to version 6.2 SP8.1, it will be no longer possible to use SoMachine or SoMachine Motion and Vijeo-Designer together. Inside the new Vijeo-Designer version, some obsolete Magelis devices are no longer supported.

Limitations on EcoStruxure Machine Expert - Safety Installation

Installing the Safety component via Machine Expert Installer requires at minimum to select and install one available controller (Modicon or PacDrive) component to get a full usable system environment (refer to Machine Expert Installer User Guide (*see Machine Expert Installer, User Guide*)).

Make sure that during the installation of EcoStruxure Machine Expert - Safety, no instance of a possibly installed former SoSafe programmable V2.x is running.

Licensing Information

Refer to the [Online help](#).

Chapter 2

Hardware/Firmware Information

What Is in This Chapter?

This chapter contains the following topics:

Topic	Page
Hardware/Firmware Information	14
Mitigated Anomalies	16
Known Operational Anomalies	18

Hardware/Firmware Information

Version Identification

Description	Firmware Version
M218	5.0.0.3
M241	5.0.7.23
M251	5.0.7.23
M262	5.0.3.2
TMSES4	1.0.0.8
TM3BCEIP	1.2.1.1
TM3•HSC202•	2.0
TM3DI16	2.0
TM3DI16G	2.0
TM3DI16K	2.0
TM5NS31	2.74
LXM32S•••M2 drive	1.06.03
LXM32S•••M2 Sercos	1.08.04
LXM32S•••N4 drive	1.06.03
LXM32S•••N4 Sercos	1.08.04
LXM52••••C••••	1.54.26.0
ILM••••••••••	1.54.26.0
LXM62••••C••••	<ul style="list-style-type: none"> ● 1.60.0.0 for hardware revision RS1• ● 1.54.27.0 for hardware revision RS0•
LXM62••••D••••	<ul style="list-style-type: none"> ● 1.60.0.0 for hardware revision RS1• ● 1.54.27.0 for hardware revision RS0•
LXM62••••E••••	1.54.27.0
LXM62••••F••••	1.54.27.0
LXM62••••G••••	1.60.1.0
LMC Eco	1.61.0.1
LMC Pro	1.61.0.1
LMC Pro2	1.61.0.1

Description	Safety-Related Firmware Version
LXM62••••E••••	1.2.4.0
LXM62••••F••••	1.2.4.0

Description	Safety-Related Firmware Version
VW3E702200000 safety option module	1.2.4.0
TM5CSLC100FS	2.52
TM5CSLC200FS	2.52
BWU2984 SWID	134253
BWU2984 Safe CPU A	135115
BWU2984 Safe CPU B	135116
ASIMON360	3.2.6.7

Contact your local Schneider Electric representative in case you need specific information for your intended machine architecture.

Mitigated Anomalies

PacDrive LMC Controls & I/Os

ID	Description
OEM00078652 / OEM00077643	The function <code>SystemInterface.FC_DrvEncSetPosition</code> cannot write the encoder position of an ILM.

M241/M251

ID	Description
OEM00076481	Crafted HTTP request on web visualization could lead to information leakage or unintended controller behavior.
OEM00078382	Missing input validation in Web interface.
OEM00078535	Crafted HTTP request on web visualization could lead to unintended controller behavior.
PEP0536708R	ASCII frames dropped when serial connection was configured with low baudrate and disturbances were applied on the line.

M262

ID	Description
OEM00078089	After several hundred of 'Reset Cold', an error could appear. Internal error was detected on the controller, the ERR LED fast flashing and the application removed.
OEM00078072	Some controller tasks were stopped without information (no error detected) in debug mode.
OEM00078057	SSI encoder: Value was temporarily outdated (each 20 ms) - same value during two SSI cycle times.
OEM00077980	M262: Unintended stop of operation under specific denial of service, causing internal error on controller with the ERR LED fast flashing and the application removed.
OEM00077977	When the connection was interrupted during the transfer phase download FTP over TLS, the controller task stopped without information (no error message).
OEM00077940	When an OPC UA client was connected on the M262 server and an online modification was performed with a download, an internal error on the controller with ERR LED fast flashing was detected and the application was removed.
OEM00077909	If a TMS4 was configured and available, approximately every 6 s the serial communication was interrupted for approximately 3 s.
OEM00077889	When access to variables not available in the controller was requested through Machine Expert Protocol, an internal error was detected on the controller with 'Led ERR Fast flashing' and the application was removed.

ID	Description
OEM00076813	No hardware fallback if the controller was non-responsive after a watchdog Hardware timeout (1.6 s).
OEM00074451	After one week of operation, the controller time was ahead of local time (approximately 4 s).
OEM00077207	M262: If an M262 was used as an EtherNet/IP Scanner and as an EtherNet/IP Adapter simultaneously, some devices were temporarily disconnected.
OEM00076721	M262: If a Modicon M262 Logic/Motion Controller was connected via a USB interface, a restart was required to allow a connection to the controller after a network scan has been performed.

M262 - Motion

ID	Description
MK-833	Lexium 32S <code>CaptureEdge</code> (Cap1, Cap2, and Cap3) offline parameter value was not applied after download.
MK-817	Controller task suspended after a reset of the encoder error.
MK-804	The Sercos service channel stopped operating after several hours.
MK-790	Unstable SSI encoder movement of Position/Vel/Acc.
MK-778	Safety Logic Controller integration - parameter editor: The information about which function blocks to use was incorrect.
MK-767	An axis with <code>CustomJob</code> without master could not be master for another axis.
MK-764	<code>MC_Power</code> error did not reset properly in some special cases.
MK-734	It was not possible to reach Sercos phase 4 when Sercos bus coupler TM5NS31 with safety slices was set to simulated working mode.
MK-699	<code>xIsHomed</code> flag was not reset properly on encoder axis.
MK-631	Improved performance while performing Sercos phase up.
MK-249	<code>SLC.OutputActiveSet</code> offline parameter value was not applied after download.
MK-223	Sercos master <code>DesiredPhase</code> offline parameter value was not applied after download.

Known Operational Anomalies

PacDrive LMC Controls & I/Os

ID	Description
OEM00054944	It is not possible to establish an EtherNet/IP connection when the EtherNet/IP device (ATV32/IL•) is connected directly to the controller. Workaround: You must add a switch between the controller and the EtherNet/IP device.
OEM00070704	If EcoStruxure Machine Expert and previous SoMachine Motion versions are installed in parallel on the local PC, the Controller Assistant provides a firmware version for selection that does not match.
OEM00072576	One of two EtherNet/IP adapters does not work when C2C master is enabled by default. Workaround: Disable the EtherNet/IP adapter by default and enable it with Reconfigure FB (CAA Device Diagnosis library).
OEM00076369	Modifications are detected for persistent variables, although the persistent variables were not modified. This occurs if a 128 Mb Compact Flash (CF) memory card is used.
OEM00076650	Too many fieldbus participants with too much data can lead to the following error message: EtherCAT Master: Download busconfiguration to NetX....

Lexium 32

ID	Description
MK-733	Using the LXM32S do not map more than 6 additional IDNs to the cyclic data. NOTE: Lexium32S TouchProbe is counted as 4 IDNs and diagnostic message S-0-0390 is counted as 2 IDNs.

Lexium 52 / 62 / 62 ILM

ID	Description
OEM00063956	ILM motor: If the Kendrion brake is used, the voltage value for the holding brake is set to the minimum value required by the brake. This minimum value is monitored. Deviations during measuring can cause malfunctions of the brake. NOTE: See important hazard message after the table.
OEM00065793	If you use a Lexium 62 drive (LXM62) in open-loop control and set <code>RefVelocity = 0</code> , a current value is displayed in the monitoring trace diagram, even though no current value was expected in open-loop control.
OEM00069062	Diagnostic code 8123 is reported for one of the axes at standstill: An application containing a master axis with a Cam and other axes at standstill reports the diagnostic code 8123 when testing under specific conditions.
OEM00069830	A Sercos run-up with a double-line topology is not possible for Lexium 62 drives.

ID	Description
OEM00070988	The Lexium 52 drive does not boot after firmware update (version 1.54.10 -> 1.54.23).
OEM00072092	Your application contains a Lexium 62/ILM 62 drive with safety-related modules (LXM62/ILM62 Safety Module). If you reboot the Sercos network, the diagnostic message 8169 Sercos Slave comm. disturbance detected is displayed in the message logger.
OEM00073627	Using an MH3 motor with a Sinus/Cosinus encoder connected to a Lexium 52/62 drive triggers the diagnostic message 8908 Unintended motor operation detected.
OEM00074275	Lexium 62 Plus: After online modification of parameters and then a phase down and phase up in a different topology, modification of parameters of type ES is no longer possible.
OEM00075885	Lexium 62 Plus: Flashing of state LED during device identification on single drives and advanced drives is slower (2 Hz) than on double drives.
OEM00077378 (OEM00073129)	Lexium 62 Plus: A sequence of Sercos topology modifications may lead to a Sercos error message.
-	Lexium 62 Plus: The diagnostic message 8503 Service service channel error detected is triggered at phase up if one of the following parameters is configured as a real-time parameter: UserDefinedStopJerk, UserDefinedStopDeceleration, TrackingDeviationLimit.
-	Lexium 62 Plus: Firmware update using the device assistant inside virtual machines may not update all drives. Repeated updates may be required.
-	Lexium 62 Plus: Writing the motor type plate for sensorless motors into advanced drives (variant G) triggers an error message, that type plate has not been written. Nevertheless the type plate is available after a reboot of the drive.
-	Lexium 62 Plus: Machine encoder data is not actualized after change of encoder and reinitialization. A power cycle is required.
OEM00078751	If Lexium 62 Advanced is configured to use machine encoder and no machine encoder is connected, no diagnostics message is triggered.
OEM00078419	For asynchronous motors used in combination with Lexium 52 / Lexium 62, the sign of the current value does not match with the direction of the motor.
OEM00078784	Changing the filter time in combination with torque limitation triggers a Sercos parameter channel error.

⚠ WARNING

UNINTENDED EQUIPMENT OPERATION

- Verify that movements without braking effect cannot cause injuries or equipment damage.
- Verify the function of the holding brake at regular intervals.
- Do not use the holding brake as a service brake.
- Do not use the holding brake for safety-related purposes.

Failure to follow these instructions can result in death, serious injury, or equipment damage.

M241/M251

ID	Description
OEM00074965	M251: Reading the PLC_R structure via the Symbol Configuration triggers a system watchdog error message.
OEM00077573	Opening a project archive of a SoMachine V4.3 project triggers an error message on the TM4PDPS1 (PROFIBUS).
OEM00075411	M251MESC: For Modicon M251MESC Logic Controllers, the cloning operation to an empty SD memory card (and other scripts like upload and download) does not operate.
OEM00074655	M241/M251: The Online → Multiple Download command is not performed correctly for Modicon M241 / M251 Logic Controllers: When an application with two controllers has been modified and the Multiple Download command is executed, the application is not downloaded to one of the controllers. Workaround: Execute the Build → Clean All command before executing the Online → Multiple Download command.
OEM00074733	The default values of cartridge outputs are not applied in the same way during RUN->STOP and RUN->RESET WARM transitions.
OEM00077573	An error message is displayed for the TM4PDPS1 library (Profibus) after opening a project archive generated with SoMachine V4.3. Workaround: Set the correct version (legacy version) manually in the Library Manager .
OEM00072286	Default values remain enabled during RUN->STOP transition even if removed from the application.
OEM00077925	During migration of an application from SoMachine V4.3 (with user rights enabled) to EcoStruxure Machine Expert, the user rights are not automatically converted before being downloaded to controller. You cannot log in into the controller. Workaround: Use a script stored on the SD card executing the command <code>delete /usr/*</code> or performing a firmware update from the SD card.
OEM00078373	Insufficient session ID length in cookie.
OEM00078372	Sensitive information stored in cookie.
OEM00078369	Session password is transmitted in clear text.
OEM00078368	Webserver is vulnerable to cross-site request forgery attack.

M262

ID	Description
OEM00077150	TcpUdpCommunication library: At first startup after firmware update, the certificate store is not ready. An application that includes TLS communication needs a second startup.
OEM00076809	M262 Motion Controllers do not support the EtherNet/IP Scanner if used on the same port as the Sercos devices.
OEM00071051	Tasks of type Freewheeling must have a minimum cycle time of 3 ms.
OEM00072876	NVL/GVL (Network Variable List/Global Variable List) only works if an Ethernet cable is plugged in the Ethernet port 1.
OEM00073787	WebVisualization with trace objects significantly increases the processor load.
OEM00074101	The Sercos master does not provide network configuration parameters for Sercos slaves (IP address, subnet mask, gateway).
OEM00074106	TM5NS31 scan time on the TM5 bus is only taken into account after the next power cycle of TM5NS31.
OEM00074841	SSL connection is noticeably slow if client has chosen a cipher suite that uses DHE/ECDHE key exchange.
OEM00075485	Adding a TM5NS31 and I/O modules to a Sercos network impacts the M262 cycle task.
OEM00075670	WebVisualization: SelfAwareness variables cannot be used directly inside a WebVisualization.
OEM00076315	The diagnostic structures of PLCSystem/PLCSystemBase library (for example <code>PLC_R</code>) cannot be accessed directly from external monitoring devices through the Symbol Configuration . They first must be copied to local variables.
OEM00076939	All nodes in a ring topology need to support RSTP (rapid spanning tree protocol).
OEM00076940	EtherNet/IP Scanner: A "stateful" firewall keeps in its memory the connections flow. If such a firewall is defined, the EtherNet/IP traffic from slaves sending their assemblies in multicast may be blocked. So this firewall mode must not be used in this case.
OEM00077157	OTB devices may not respect the scanner RPI (Requested Packet Interval) when TM3 analog modules are configured.
OEM00077199	After transferring an application using an SD card, a TM3XHSC module may restart with an error message. A power cycle restores the correct operation.
OEM00077237	User rights: You are asked twice to enter the default administrator credentials at activation.
OEM00077280	Using the <code>PLCO.MC_TouchProbe</code> with an invalid argument for <code>ifTrigger</code> is not managed as expected.
OEM00077663	If a firmware update using an SD card completes with a steady yellow SD card LED, repeat the firmware update operation.
OEM00077713	When you are modifying the user rights, ensure that no external equipment are trying to access M262 variables with former credentials.
OEM00077807	TM3 bus cycle time must not be set to a value greater than 200 ms when TM3XHSC modules are configured.

ID	Description
OEM00077830	NbOfIncs and NbOfUnits values must be < 2,147,483,647 (2 ³¹), else the capture is invalid.
OEM00077839	The boot time of a controller increases when the number of files increases.
OEM00077915	The PWR LED turns to red when the internal temperature is > 80° (instead of > 100°).
OEM00076745	If EcoStruxure Machine Expert is running in a Virtual Machine (VMware), M262-USB may conflict with the VMware: <ul style="list-style-type: none"> ● USB communication is inoperable. ● The controller is not discovered in: <i>My Controller/Communication setting</i>. Install EcoStruxure Machine Expert directly on the PC or use Ethernet for PC connection to the controller.
OEM00077894	If SoMachine V4.3 or an earlier version was installed on the computer, the IP address used by the PC is not correct. Thus, the USB communication is not operational. Workaround: You have to select the network interface SE RNDIS PSX M262 connection under <i>Control Panel/Network and Internet/Network and Sharing Center</i> and set the IP address manually to 192.168.200.2.
OEM00077911	An M262 is not discovered by USB and cannot be connected to EcoStruxure Machine Expert. Workaround: You have to restart the USB by the gateway. Select the gateway tray application and restart the gateway.
OEM00077737	When unplugging and plugging an M262 cable (Eth2-RJ45), there was Modbus IO-scanner application loss on the ATV340.

M262 - Motion

ID	Description
MK-823	When working with 16 LXM32S and 23 TM5 BC and 1 SLC with multiple MC_CamIn running on all LXM32S, and when using a MAST task at 5 ms, the controller reports an overload of the task. Workaround: When working with big configurations, ensure that you use a proper cycle time for your controller task by verifying the load of your task during commissioning. Also, configure a Watchdog on your task to ensure that there is no overload during run time.
MK-835	MC_TouchProbe reports no error when the drive is disconnected. When you execute an MC_TouchProbe on an LXM32S and you disconnect the drive, the function block does not report an error. The output Busy stays active. Workaround: Make sure to cancel the running MC_TouchProbe using MC_AbortTrigger.
MK-847	Starting MC_CamIn with non-connected SSI-encoder as master results in the ErrorID : Unexpected Feedback. Workaround: If starting an MC_CamIn with an SSI-encoder as master, and this SSI-encoder is not connected to the M262, the ErrorId reported is Unexpected Feedback when it should be MasterDataInvalid.

HMISCU Controllers

ID	Description
OEM00046432	HMISCU controller Panels: Sporadically, the communication between the HMI and the controller is interrupted without displaying an error message. You have to restart the HMISCU to re-establish the communication.
OEM00077527	The EcoStruxure Machine Expert Logic Builder command Refactoring → Rename is not available for HMISCU controllers. You must rename HMISCU controllers manually without the Refactoring feature.

Chapter 3

Library Information

What Is in This Chapter?

This chapter contains the following topics:

Topic	Page
Library Information	26
Mitigated Anomalies	28
Known Operational Anomalies	29

Library Information

Version Identification

Description	Version
ApplicationLogger	1.1.2.0
AsyncManager	1.0.5.0
AutoTune	1.3.14.0
Booster Pumping	5.0.0.5
CommonMotionTypes	1.0.1.0
CrankModule	1.3.4.0
EMailHandling	2.0.4.0
EtherNetIP Explicit Messaging	1.1.7.0
EtherNetIP Remote Adapter	1.0.10.0
FileFormatUtility	1.2.6.0
FtpRemoteFileHandling	1.2.4.0
GMC Independent Altivar	1.2.4.0
GMC Independent Lexium	1.1.7.0
GMC Independent PLCopen	1.2.3.0
HttpHandling	1.0.11.0
M262 Encoder	1.0.0.2
M262 PLCSystem	1.0.0.19
M262Diagnostics	1.0.1.0
MotionInterface	1.1.75.12
MqttHandling	2.0.6.0
PackML	1.2.3.0
PD_AxisModule	1.6.2.0
PD_EDesignAxisModule	2.3.2.0
PD_EdesignCore	2.2.6.0
PD_EdesignCrankModule	1.5.2.0
PD_ETest	1.3.6.0
PD_GlobalDiagnostics	1.3.1.0
PD_MultiBelt	1.4.3.0
PD_MultibeltModule	1.4.1.0
PD_PacDriveLib	1.8.7.0
PD_SmartInfeed	1.4.3.0

Description	Version
PD_SmartInfeedModule	1.3.1.0
PD_SoMotionGenerator	1.5.1.0
PD_Template	1.6.1.0
PLCopen MC part 1	1.1.69.12
PreventaSupport	1.1.1.0
Robotic	2.12.1.0
RoboticModule	2.8.0.0
SchneiderElectricRobotics	2.8.0.0
SchneiderElectricRobotics Parameters	2.9.0.0
SchneiderElectricRobotics Toolbox	1.2.0.0
SercosCommunication	1.0.1.0
SercosDriveUtility	1.1.1.0
SercosMaster	1.1.75.12
SlcRemoteController	1.3.6.0
SnmpManager	1.2.1.0
SqlRemoteAccess	1.1.2.0
TcpUdpCommunication	2.0.11.0
TeSys island	1.1.0.0
TimeSync	1.1.2.0
Toolbox	3.0.1.0
TwidoEmulationsupport	1.2.2.0
Unwinder	1.2.3.0
UnwinderModule	1.1.0.0
UserMotorTypePlate	1.3.9.0
UserTorqueFeedForward	1.1.2.0

Version Identification Safety Libraries

Description	Version
EnableSwitch_SE_SF	V0.99 from 10/28/15
PLCopen_SF	V1.00 from 09/14/07
Preventa_SafeMotion	V0100.0100 from 02/08/16

Mitigated Anomalies

Libraries

ID	Description
OEM00077455	FB_FtpClient: Communication interruption during file transfer is now detected.

Known Operational Anomalies

Libraries

ID	Description
OEM00056474	<p>AxisModule library: The command <code>ET_Cmd.StartTrigWaitInPos</code> is sent to the <code>FB_AxisModule</code> to perform a positioning while the command is active, the input <code>iq_diCmd</code> is overwritten by the value 0.</p> <p>In this situation, the <code>FB_AxisModule</code> triggers the diagnostic message <code>UnexpectedProgramBehavior</code> (<code>DiagExt = UnknownCase</code>).</p> <p>Workaround: Re-enable the function block to quit the diagnostic message.</p>
OEM00072319	<p>SmartInfeed library: Using the <code>ET_TargetGeneratorMode.External</code> in combination with the <code>FB_VelocityRatioAlgorithm</code> and defining an invalid target position triggers a page fault exception.</p>
OEM00073262	<p>MultiBelt library: If the start station is defined as a <code>PassBy</code> station, the second train remains in arriving state (<code>ET_TrainState.Arriving</code>).</p>
OEM00073263	<p>MultiBelt/MultiBeltModule library: Under certain conditions, after stop and warmstart of a <code>MultiBelt</code> module, the <code>ET_DiagExt</code> message <code>TrainMovesBackward</code> is displayed.</p>
OEM00074810	<p>Unwinder library, precontrol movement by an external master (bobbin radius changes): The <code>Setpos</code> value for this movement is incorrect if <code>DRV_WinderRight.Direction = left</code>.</p>
OEM00075899	<p>MultiBelt/MultiBeltModule library: The <code>q_xHomeOk</code> bit of all trains is set to <code>TRUE</code> in homing mode <code>HomeOnTp</code>, even if the homing procedure was stopped due to missing <code>TouchProbe</code> signals.</p>
OEM00076350	<p>Unwinder/UnwinderModule library: A basic load is required when the unwinder is empty. The basic load value is replaced by the calculated value but the calculated value should be added to the basic load value.</p>
OEM00076417	<p>MultiBelt/MultiBeltModule library: Under certain conditions, a train starts moving backwards after a coldstart, but is stopped immediately. An error message is displayed.</p>
OEM00074744	<p>SystemInterface library: Calling the <code>FC_TPEdge</code> triggers the diagnostic message <code>8902 Software error (page fault)</code> in the RTP (Real Time Process) task, and the controller displays a hardware watchdog message.</p>
OEM00077150	<p>TcpUdpCommunication library: At first startup after firmware update, the certificate store is not ready. An application that includes TLS communication needs a second startup.</p>
OEM00077914	<p>TcpUdpCommunication library: If more than one secure (Transport Layer Security) TCP server is active at the same time, a system watchdog may occur due to a higher system load. Therefore, only one instance of a secure (TLS) TCP server must be active.</p>
OEM00078797	<p>Writing a nameplate by use of <code>FB_InitMachineEncoder</code> results in high tracking deviation.</p> <p>Workaround: Restart Sercos bus after the nameplate is written.</p>

ID	Description
OEM00078768	Leaving multibelt OpMode and restarting to automatic mode by executing a warm start may trigger a page fault.
OEM00078224	A stop of the multibelt followed by a restart may cause an incorrect SetPos.
OEM00078541	Robotic: The EcoStruxure Machine Expert installation does not include the library ARMIO.

Chapter 4

Software Information

What Is in This Chapter?

This chapter contains the following topics:

Topic	Page
Software Information	32
Compatibility EcoStruxure Machine Expert	33
Mitigated Anomalies	34
Known Operational Anomalies	36

Software Information

Version Identification

Description	Version
Machine Expert Installer	11.19.16801
Diagnostics	18.1.1.0
Controller Assistant	18.1.1.0
Device Assistant	18.1.1.0
DiffViewer	18.1.1.0
Gateway	18.1.1.0
Launcher	18.1.1.0
OPCServer	3.5.12.70
SoftSPS	3.5.12.80
SVN	4.2.4.0
Logic Builder ⁽¹⁾	1.1
Vijeo-Designer	6.2.8.4008
CoDeSys	V3.5 SP12 Patch8 HF2
SQL Gateway	18.0.1.0
Motion Sizer	4.1.0.0
(1) If using a virtual machine, the download of the online help operates correctly only if the option Accelerate 3D graphics is deactivated in the VM settings.	

Compatibility EcoStruxure Machine Expert

Overview

EcoStruxure Machine Expert can be installed in parallel to other Schneider Electric software products, such as SoMachine and SoMachine Motion.

For general information on compatibility of EcoStruxure Machine Expert, refer to the Compatibility and Migration Guide (*see EcoStruxure Machine Expert Compatibility and Migration, User Guide*).

EcoStruxure Machine Expert V1.1 SP1 updates the existing EcoStruxure Machine Expert V1.1 installation.

Mitigated Anomalies

Controller Assistant

ID	Description
OEM00078093 / SI-4431	The command line from the Controller Assistant did not support a command to list the available Sercos slave versions.

EcoStruxure Machine Expert

ID	Description
OEM00078173	EcoStruxure Machine Expert did not stop monitoring from variables in online mode even if the variable was not visible. In some cases, this caused high memory load and slow down of online monitoring in specific or huge projects.
OEM00078040 / OEM00077799	If Execute program was selected as the behavior for outputs in Stop mode and an exception occurred in the controller (e.g. a division by 0), the communication between EcoStruxure Machine Expert and the controller stopped if the POUs for implicit checks were active in the project and a new Application download was executed.
OEM00078036 / OEM00077749	In the event of some specific or huge projects it could happen that EcoStruxure Machine Expert froze periodically every few minutes. In these cases the used RAM from the EcoStruxure Machine Expert went from 6 GB to 4 GB.
OEM00077971 / OEM00077799	The communication between EcoStruxure Machine Expert and the controller stopped with an error detected in <code>GlobalInit</code> if the function block input was assigned via direct addressing (AT%).
OEM00077962 / OEM00077791	In big projects expanding an array in online mode (watchlist, declaration editor) EcoStruxure Machine Expert could freeze for up to 10 seconds.
OEM00077833	It was not possible to execute an online change after modifying a variable of an FBD program which contains structs, arrays, etc.
OEM00076607 / OEM00077711	When modifying the trace configuration (insertion, deletion, display / hiding) of variables, the cursor went to the beginning of the configuration.
OEM00075276	When a trace was shown in Logic Builder, the values were not displayed properly and the next value on the left-hand side was displayed. It was necessary to select the variable itself to see the exact value from the cursor.
OEM00077734 / OEM00074209/P LAT-98	When using direct addressing in the EcoStruxure Machine Expert project, an advisory message was displayed everytime you performed a build (F11) of the project. This dialog box had to be confirmed by pressing Alt + F.
OEM00078553/SI -4555	The sub-objects (Methods, Properties, ...) were locked in SVN when the parent object (POU) was modified.
OEM00078290/SI -4457	The project update changed the offline parameter value of <code>ControlMode</code> .
SI-4261	Sometimes an unhandled exception occurred (...HWND...) in combination with DTMs.

ID	Description
SI-4514	EcoStruxure Machine Expert shell did sporadically not work with controllers in simulation mode (unsuccessful login).
OEM00078509	EcoStruxure Machine Expert opened the SLC Remote Controller example instead of the Quick Motion Programming.
OEM00077162	A CSV export did not contain all data in case of a 2-dimensional array of DUT.
OEM00078358	LibDoc scripting transformation is not working
IECLIB-2187	Function Template for HttpClient has been implemented

Known Operational Anomalies

EcoStruxure Machine Expert

ID	Description
OEM00064709	Motion Sizer: The torque/speed curve of the SH205/30360 with an external fan is calculated incorrectly.
OEM00067341	Motion Sizer: The performance of the Motion Sizer with large projects is slow while entering axis names and descriptions (slow refreshing).
OEM00072759	Motion Sizer: It is not possible to add Lexium 62 ILM drives of different sizes to the same connection module. The rounding operation for the cycle time does not provide suitable values.
OEM00069953	To display different comments for libraries you can enter the key <code>LibDocContent</code> . Using <code>LibDocContent</code> with <code>DocsOnly</code> or <code>CommentsAndDocs</code> , the same results are displayed.
OEM00073945	Accessing a variable name of the TM5 module I/O mapping is not possible with Python scripting using an ARRAY.
OEM00075351	You log in to a project (FBD code) and put the focus on a network (which is not the last one) in an action/program. If you log out and log in again, the focus will be on the last network in the action/program. The same behavior is shown up, if you switch between two actions.
OEM00075726	A Cam switch task sporadically triggers the diagnostic message <code>8317 Program cycle time overrun</code> , although the Cam switch task is configured with a higher prior than the RTP (Real Time Process) cycle.
OEM00063214	TCP socket communication is delayed sporadically when the programming software is connected to the controller.
OEM00075185	When you attempt to upload a Harmony ZBRN1 DTM running under Modbus TCP IO Scanner , EcoStruxure Machine Expert is no longer operational (APPCRASH).
OEM00077196	Vijeo-Designer: The communication between an M262 controller and the Vijeo-Designer HMI is interrupted after several days. Workaround: Power cycle the HMI. The communication is re-established.
SI-3439	While converting a device during Update Project , you may be asked to delete internal data of persistent variable lists. Depending on the number of devices to be converted, this question may occur several times. Confirming it will avoid asking again for devices of the same controller.
SI-3971	When you convert a controller, for example, an M262L20 to an M262M35, the module configuration of the TM5/TM7 interface is not converted and is no longer available after conversion.
SI-3727	For ATV-DTM with activated control panel, the Disconnect command does not have any effect when the motor accelerates (ACC), turns constantly (RUN) or decelerates (DEC). To stop the motor, press the Stop button. Nevertheless, the control panel is not updated and still displays the state that was active before. You can execute the Online → Logoff command, but this may have the effect that EcoStruxure Machine Expert is being closed.

ID	Description
-	Context sensitive help (F1) is not available for POUs declared with namespace.
-	If you are using a Virtual Machine (VM) you must deactivate the option Accelerate 3D graphics in the VM settings before downloading the online help.
SI-4244	ATV340: The DTM is not available.
OEM00070927	Depending on the circumstances, when the project is connected to SVN, it is no longer possible to save (autosave included). The message the process cannot access the file...because it is being used by another process appears. Workaround: Activate the option Execute cleanup on project save in Tools -> Options -> SVN Settings (Advanced) .
OEM00078357IE CLIB-1707	Control_ATV - Drive moves on if controller is in stop.
OEM00078790	Machine Expert Installer closes unexpectedly during modification of an existing installation. The modification is not completed.
OEM00078543	When searching for an element of the structure, the <code>CrossReferenceList</code> did not search in the complete project.

EcoStruxure Machine Expert - Safety

ID	Description
OEM00078219	For TM7SDI8DFS and TM5SDI20DFS It is not possible to map a variable for <code>SafeTwoChannelOkxxyy</code> channel from EcoStruxure Machine Expert Logic Builder to EcoStruxure Machine Expert - Safety. If the variable is added in Logic Builder, the Safe Configuration Change window is displayed in EcoStruxure Machine Expert - Safety but the variable is not displayed in the parameter grid after the confirmation. Workaround: -
OEM00078801	Exchanging data between an M262 controller and an SLC is not operable if not both directions are configured. Workaround: Configure at least one exchange data in both directions, then the data exchange becomes operable.

Chapter 5

Additional Information

What Is in This Chapter?

This chapter contains the following topics:

Topic	Page
Mitigated Anomalies	40
Known Operational Anomalies	41

Mitigated Anomalies

Documentation

The online help is updated with the following documentation:

- M262 Diagnostics Library Guide
- M262 Logic/Motion Controller - Programming Guide
- M262 Logic/Motion Controller - Hardware Guide
- TM3 Expert Modules - Hardware Guide
- TMS Expansion Modules - Hardware Guide

ID	Description
OEM00077576	M262 documentation of cloning procedure wrongly said that the ERR Led flashes at the end of successful cloning procedure.
OEM00077931	Incorrect encoder transmission speed list and default value in M262 documentation.
OEM00077981	M262 documentation must inform that the network name modification is applied at next power ON.
OEM00077984	M262 industrial plug and work documentation did not include the information that the locate button must be used to well identify the target device.
OEM00077991	M262 documentation did not include an explanation on how to remove user rights using a script with command format .
OEM00078056	M262 Programming Guide: Incorrect link to Modicon M262 Logic/Motion Controller Sercos Configuration.
OEM00078083	TM3 Expert I/O Modules Hardware Guide: Incorrect description of LEDs state when a TM3X•HSC• module is not configured.
OEM00078297	M262 Programming Guide contained several minor incorrect descriptions.
OEM00078298	Incorrect ISO standard reference for CAN characteristics of the TMSCO1 module.
OEM00072944	M262 documentation did not contain the information that Reset origin command makes the web visu files erased.

Known Operational Anomalies

Documentation

ID	Description
OEM00032469	Detailed information required for WD (watchdog) of the logic motion controller LMC •01. Documentation needs to be enhanced.
OEM00045026	Some dimension values provided by the hardware guides and the CAD files on the Schneider Electric homepage are slightly different for LXM 52 drives, LXM 62 drives and LMC Eco Motion Controllers. Documentation needs to be enhanced.
OEM00058892	In the Online Help, the chapter <i>TM5 / TM7 System - Load Breaking (TM5/TM7 System Planning and Installation Guide)</i> needs to be enhanced.
OEM00071212	The Online Help for the TM5SEAISG module (<i>Modicon TM5, Expansion Modules Configuration, Programming Guide</i>) provided incorrect ranges for the analog input register.
OEM00076210	The information on the TM5SPS1 power supply module needs to be enhanced in the Online Help.
OEM00077834	Lexium 62 Plus: The encoder output frequency is limited to 1 MHz, interpolation factor is set to 16 increment cycles per Sinus/Cosinus period of the analog encoder.
—	PLCopen MC part 1: The following text and warning need to be added to the library documentation. If the position value of the master leaves the defined cam position range, the cam signals that the end of the cam profile has been reached. This implies that a buffered job is activated, regardless of whether the master has left the cam position range in a positive or a negative direction. The master can also leave the cam position range as a result of jitter if the master is at a standstill at a position sufficiently close to the positive or negative limit of the cam position range. See important safety information at the end of this table.
—	PLCopen MC part 1: A hazard message needs to be added to the library documentation. See important safety information at the end of this table.
OEM00077321	Event Task: A remark is needed that only internal IEC variables and values of onboard touchprobes and digital inputs (controller) are permitted.
SI-4252	The project update with HMI has been changed, as some HMI devices are not supported by Machine Expert.
IECLIB-2162	HttpHandling library guide: An example is needed on how to send an HTTP <code>Get</code> request using the property <code>State</code> as state variable of the state machine.
IECLIB-1713	TcpUdpCommunication library guide: An example is needed on how to implement <code>UDPMulticast</code> with <code>FB Method JoinMulticastGroup</code> in the <code>TcpUdpCommunication</code> library.
OEM00077826	Remove in the online help the statement that for the <code>AccelerationTorqueLimit</code> and <code>DecelerationTorqueLimit</code> parameters the value zero deactivates the torque limit.
OEM00078341	Maximum number of files in the Message Logger must be documented.

ID	Description
OEM00078342	M262 Programming Guide: Incorrect information for Reset origin command. It removes part of the system logs.
OEM00078593	M262 Hardware Guide: Contains a not accurate graphic: the size of M262 controller is different to TM3 size.
OEM00078594	M262 Hardware Guide: Missing link to the TM5 fieldbus interface Hardware Guide.
OEM00078595	M262 Hardware Guide: Incorrect link for SetRTCDrift documentation.
OEM00078598	M262 Hardware Guide: Incomplete description of Run/Stop sources.
OEM00078607	M262 Hardware Guide: Incorrect links to I/O status LEDs.
OEM00078608	M262 Hardware Guide: No description about LED of SL yellow blink.
OEM00078610	M262 Hardware Guide: Incorrect links for Ethernet 1 and Ethernet 2 ports of TM262M15MESS8T/TM262M25MESS8T/TM262M35MESS8T.
OEM00078629	The memory size of M262 is different between Programming Guide and Hardware Guide.
OEM00078630	M262 Programming Guide: Item 4 is not included in Files Transfers in Memory graphic.
OEM00078691	Missing note on TMSSES4 not to interconnect embedded Ethernet port and TMSSES4 (or interconnect TMSSES4 module).

 WARNING

UNINTENDED EQUIPMENT OPERATION

Implement all measures required to ensure that a job is only buffered if a sufficient distance from the position value to the end of the cam position range can be respected.

Failure to follow these instructions can result in death, serious injury, or equipment damage.

 WARNING

UNINTENDED EQUIPMENT OPERATION

Implement a filter for the master velocity and acceleration if you have an axis that follows a feedback axis master.

Failure to follow these instructions can result in death, serious injury, or equipment damage.

Chapter 6

Release Notes History

Section 6.1

EcoStruxure Machine Expert V1.1

What Is in This Section?

This section contains the following topics:

Topic	Page
Hardware/Firmware Information	45
New Features	47
Mitigated Anomalies	53
Known Operational Anomalies	55
Library Information	60
New Features	62
Mitigated Anomalies	68
Known Operational Anomalies	69
Software Information	70
New Features for Machine Expert Installer and Online Help	71
New Features EcoStruxure Machine Expert	72
New Features for EcoStruxure Machine Expert - Safety	75
Compatibility EcoStruxure Machine Expert	76
Compatibility EcoStruxure Machine Expert - Safety	82
Mitigated Anomalies	84
Known Operational Anomalies	96
Documentation - Mitigated Anomalies	101
Documentation - Known Operational Anomalies	102

Hardware/Firmware Information

Version Identification

Description	Firmware Version
M218	5.0.0.3
M241	5.0.7.20
M251	5.0.7.20
M262	5.0.2.1
TMSES4	1.0.0.8
TM3BCEIP	1.2.1.1
TM3•HSC202•	2.0
TM3DI16	2.0
TM3DI16G	2.0
TM3DI16K	2.0
TM5NS31	2.74
LXM32S•••M2 drive	1.06.03
LXM32S•••M2 Sercos	1.08.04
LXM32S•••N4 drive	1.06.03
LXM32S•••N4 Sercos	1.08.04
LXM52••••C••••	1.54.26.0
ILM••••••••••	1.54.26.0
LXM62••••C••••	<ul style="list-style-type: none"> ● 1.60.0.0 for hardware revision RS1• ● 1.54.27.0 for hardware revision RS0•
LXM62••••D••••	<ul style="list-style-type: none"> ● 1.60.0.0 for hardware revision RS1• ● 1.54.27.0 for hardware revision RS0•
LXM62••••E••••	1.54.27.0
LXM62••••F••••	1.54.27.0
LXM62••••G••••	1.60.1.0
LMC Eco	1.60.3.3
LMC Pro	1.60.3.3
LMC Pro2	1.60.3.3

Description	Safety-Related Firmware Version
LXM62••••E••••	1.2.4.0
LXM62••••F••••	1.2.4.0

Description	Safety-Related Firmware Version
VW3E702200000 safety option module	1.2.4.0
TM5CSLC100FS	2.52
TM5CSLC200FS	2.52
BWU2984 SWID	134253
BWU2984 Safe CPU A	135115
BWU2984 Safe CPU B	135116
ASIMON360	3.2.6.7

Safety-Related Products

Additional information on the Safety Option Module VW3E702200000 for Lexium 62 ILM:

Lexium ILM070, ILM100 and ILM140 motors must have a certain hardware revision of the electronic unit and a new FPGA (field-programmable gate array) to be compatible with the Safety Option Module for Lexium 62 ILM.

The new revision is included in Lexium ILM motors with the following S/N and DOM:

- ILM070: S/N \geq 2506064503 (DOM \geq 11.09.2015)
- ILM100: S/N \geq 2506058831 (DOM \geq 18.08.2015)
- ILM140: S/N \geq 2506059644 (DOM \geq 21.08.2015)
- New FPGA version: CB0013_D010_0109_00_04

When using earlier versions of the Lexium ILM, the Safety Option Module is not recognized, and the drive does not start.

For PacDrive architectures the AS-i/Sercos III Safety Gateway BWU2984 is integrated. For more information, refer to the [AS-i/Sercos III Safety Gateway BWU2984 for Embedded Safety System - Bihl+Wiedemann Integration Guide](#).

Performance and System Limitations of New TM5CSLC•00FS Firmware Version

The new TM5CSLC•00FS firmware version delivered with EcoStruxure Machine Expert V1.1 has some performance improvements in relation to previous TM5CSLC•00FS firmware versions.

The total number of safety axis and safety I/Os in a system depends on several factors such as, for example, Sercos cycle time, activated/simulated devices, configured devices in the architecture, and local device configurations using additional IDNs, local I/Os on drives, etc. When the system limit is reached, a C1D C30F 0109 hex is triggered.

The supported axis in a system running on the edge of device limitations can vary between boot up by ± 1 . Therefore, it is a good practice to stay two axis away from the detected system limit.

For more information on performance refer to System Limitations (*see Embedded Safety for M262, Integration Guide*).

Contact your local Schneider Electric representative in case you need specific information for your intended machine architecture.

New Features

M218

- Support of TM3 modules:
TM3 DI/DO modules (includes TM3RDM16/32R) and AI/AO modules will be supported through the adaptor module (TM2DOCKN).
- SL1 & SL2 Modbus polarization default setting
The polarization setting of SL1/ SL2 Modbus communication is by default **enable** when the port addressing is selected as **Master**.

M241/M251

- Support of CoDeSys V3.5 SP12
- Default login/password changed when user rights are not activated.
- User right management adapted to CoDeSys V3.5 SP12
- Support of TM3BCEIP TM3 EtherNet/IP bus coupler for distributed I/O architectures
- Behavior of outputs in STOP mode: default value applies after application download, controller power cycle, reset cold/warm
- Behavior of outputs during the transitions from RUN to STOP, and from RUN to EXCEPTION also sets default output values
- Support of TM3DI16/G and TM3DI16K renewal modules (latch and filter functions are only configurable with modules of software version 2 or greater).
- Support of `FC_GetFreeDiskSpace`, `FC_GetLabel`, `FC_GetTotalDiskSpace`
- Extended Motion Function Blocks to allow the configuration of 4 `JerkRatio` parameter settings.

M262

Modicon M262 Logic/Motion Controller offer is made for performance - demanding machines.

- M262 controllers are ready for IIoT, (MQTT, AMQP, OPC UA, TLS,...) and combine logic, motion and safety-related control applications:
 - TM262L: for the logic control of multiple input and output configurations
 - TM262M: for the motion control of up to 16 synchronized axes
In combination with a TM5CSLC•00FS for safety-related control applications up to SIL3.
- Modicon M262 Logic/Motion Controller embed 4 fast digital inputs and 4 fast digital outputs, connected to the controller with the use of screw terminals on the front face of controllers.
- Modicon M262 Logic/Motion Controllers (TM262M•••) embed an encoder input (SSI or incremental).
- Modicon M262 Logic/Motion Controllers can be combined with Modicon TM3, Modicon TM5, and Modicon TM7 offers using Sercos III, EtherNet/IP and CANopen bus couplers.
- Modicon M262 Logic/Motion Controllers have a Dual Core processor:

- Core 1: is dedicated exclusively to managing program tasks and offers the maximum resources for real-time execution of the application code.
- Core 2: is dedicated to executing communication tasks, which then have no further impact on the application execution performance.
- Performance:
 - 256 MByte RAM memory
 - 128 MByte Flash memory
 - 3-5 ns/ instruction
- A slot for an industrial memory card is available on the front face of the controllers:
 - SD-card up to 2 GB, or
 - SDHC-card up to 32 GB
- A QR-code, printed on the front face of the controllers and Smart Communication modules, provides a link to the Schneider Electric maintenance page of the product.
- A TMS bus port allows the connection of Smart Communication modules, assembled by simple interlocking on the left-hand side of the controllers.
- A TM3 bus port allows the connection of TM3 expansion modules, assembled by simple interlocking on the right-hand side of the controllers.

PacDrive LMC Controls

- Watchdog supervision during I/O-update:
 - Watchdog was deactivated during the cyclic execution when I/Os were updated. Now the watchdog stays active during I/O-updates.
 - If a given limit for I/O updates is exceeded, a watchdog is triggered.
- PROFINET:
 - The consumer and provider statuses (CS and PS) are now available in the application. The provider status appears in the tab **PNIO Module I/O Mapping**.

NOTE: Verify the direct call of % addresses in your application. The preferred solution to access the % addresses in your application is to map variables to all the % addresses.

Accessories TMS

The TM262 Logic/Motion Controllers allows to connect 3 TMS communication modules.

TM3 EtherNet/IP Bus Coupler

TM3 EtherNet/IP Bus Coupler is a distributed architecture solution, which enables the creation of distributed islands of industrial TM3 I/Os managed by a master controller M241, M251 or M262 via Ethernet fieldbus.

New features:

- The TM3 EtherNet/IP bus coupler supports TM3 and TM2 I/O modules:
 - Up to 14 TM3 I/O modules
 - Up to 7 TM2 I/O modules
 - Up to 7 TM2 I/Os mixed with TM3
- The TM3 EtherNet/IP bus coupler has an embedded webserver which supports:
 - User rights management
 - BOOTIP, DHCP, fixed IP-configuration
 - Bus coupler firmware update
- The TM3 EtherNet/IP bus coupler has an embedded switch with isolated RJ45 ports to support daisy chaining and ring topologies (RSTP/SNMP).
- The TM3 EtherNet/IP bus coupler provides cyber security protection features supporting Achilles level 1.

Limitations:

- Latch feature is not supported for TM3DI16, TM3DI16G, TM3DI16K.
- TM3 expert I/O are not supported.
- Only single user can modify the firmware update or write values through embedded webserver.
- The maximum number of TM3 I/O modules will be validated by software and may result in a lower number, depending on the number of analog I/O modules used.

TM3 Expert I/O

The TM262 Logic/Motion Controller supports 4 types of high speed counting modules:

- TM3XFHSC202
- TM3XFHSC202G
- TM3XHSC202
- TM3XHSC202G

These modules are connected on the right side of the controller and allow management of 2 counting channels with / without reflex output.

TM3XFHSX202 / TM3XFHSX202G can be configured to raise events in the controller to manage fast actions.

The firmware of the I/O module can be updated by the controller.

Limitations:

The TM3XFHSC202 / TM3XFHSC202G and TM3XHSC202 / TM3XHSC202G high speed counting modules are not supported by M241/M251 logic controllers nor the TM3 EtherNet/IP bus coupler

TM3 Standard I/O

New hardware revision for TM3DI16, TM3DI16G, TM3DI16K.

These new TM3 I/O modules are supported by M241, M251, M262 and TM3 EtherNet/IP bus coupler and support new features:

- Configurable input filter
 - The input acquisition time filter can be adjusted to allow fast input signals (0.3 - 12 msec).
- Input latch function
 - The input latch function allows to capture input signals with short durations and memorize the state till the next controller task execution.
 - This feature is not supported by the TM3 EtherNet/IP bus coupler.
- Firmware upgrade
 - The firmware of the I/O-module can be updated by the controller.

LXM32S Servo drives

The Lexium 32 product family consists of various servo drive models that cover different application areas. Together with Lexium BMH servo motors or Lexium BSH servo motors, as well as a comprehensive portfolio of options and accessories, the drives are suited to implement compact, high-performance drive solutions for a wide range of power requirements.

New features:

- Sercos module firmware update with Device Assistant
- Diagnostic object S-0-0390 can be mapped to the realtime data, showing C1D / C2D with corresponding error number
- IP-settings coming from Sercos become valid without powercycle
- DS402 statusword P-0-3027.0.2 can be mapped to the real-time data.
- Support of ProfileTorque mode with target value via parameter
- Support of PTI/PTO Torque mode
- Support of index pulse with SinCos1Vpp as machine encoder
- Controlled ramp down when drive will be disabled
- Locate device function by commissioning the SoMove configuration software
- SIN/COS values are traceable
- Error class for error A344 can be defined when using machine encoder for position control.

LXM32S Firmware Version Requirements

The LXM32S firmware is not automatically updated from M262. Therefore, the following firmware version requirements must be met:

- Drive firmware: V1.06.03 or later
- Sercos module firmware: V1.08.04 or later

If the firmware does not meet these requirements, it must be updated. For performing the firmware update, please contact your local Schneider Electric representative.

Lexium 62 Standard Plus and Advanced Plus System Integration

- System integration of the LXM62 Standard Plus and Advanced plus drive within the basic object Lexium LXM62 Drive.
- New configuration tab **Feature Configuration** to select the **DeviceVariant** within the drive object.

DeviceVariant for Lexium 62:

DeviceVariant type	Description
Standard	Standard Lexium 62 functions are available. No additional user functions.
Standard Plus	Additional Standard Plus user functions are supported.
Advanced Plus	Additional Advanced Plus user functions are supported.
Application defined	<ul style="list-style-type: none"> • Selection of the available user functions. • Possibility to create a generic project. • Configuration of the device variant type via IEC before the Sercos phase-up check.

During Sercos phase-up, PacDrive LMC Pro, PacDrive LMC Pro2 and PacDrive LMC Eco verifies if the configuration matches with the connected physical devices.

User functions

The new concept allows you to select the new drive-specific features with EcoStruxure Machine Expert inside the **Lexium LXM62 Drive** object. After selecting the **DeviceVariant** type in the **Feature Configuration** tab, the supported user functions are visible in the user interface and can be activated with the check box or using the IEC application. After the activation of a user function, the corresponding parameters appear in the parameter editor and can be used in the IEC application.

Supported features of LXM62 Standard Plus:

Feature	Description
Brake check functions (new system interface library functions)	<ul style="list-style-type: none"> • FC_BrakeCheckGetState(...) • FC_BrakeCheckSet(...) <p>Verify whether the coupled brake is able to hold its specified torque.</p>
Encoderless velocity control	<ul style="list-style-type: none"> • Support of BMP servo motors without encoder • Open-loop control for low velocity. The current is pre-defined by the drive and displayed by the object parameter <code>StartingRefCurrent</code>. You can adjust it with object parameter <code>UserStartingRefCurrent</code>. • Closed-loop position control for high velocity. The required velocity for the closed-loop control is displayed by the object parameter <code>MinimalOperatingVelocity</code>.

Feature	Description
Torque limitation	<p>Two new modes available: acceleration-dependent torque limitation and mechanical overload protection.</p> <ul style="list-style-type: none"> ● Both configurations allow to limit the torque on load side. ● The functionality is enabled and switched with the object parameter <code>TorqueLimitationMode</code>. ● The torque levels are set by the user with two object parameters <code>AccelerationTorqueLimit</code> and <code>DecelerationTorqueLimit</code>. ● In mechanical overload protection mode, the motor is switched to torque free, when the adjusted torque is exceeded on the load side. It can be filtered to adjust the sensitivity. ● In acceleration-dependent torque limitation mode, the torque on the load side is limited.

Supported features of LXM62 Advanced Plus:

- All features for LXM62 Standard Plus
- Incremental Encoder Output
Encoder signal reflection of motor encoder or machine encoder.
- Machine Encoder Input
The Machine Encoder Input is only used for the position control in the drives control loop.

Supported features of the `UserMotorTypePlate` library:

- `FB_InitMachineEncoder`
POU to initialize the machine encoder type plate for LXM62 Advanced Plus.

Fast Device Replacement

- Support of the new Lexium LXM62 Drive Standard Plus and Advanced Plus with fast device replacement.
- A message logger entry is added if the configuration and physical device do not match.

Lexium ILM62 Integrated Servo Drives

Multiaxis integrated servo drives from 0.31 to 1.91 kW for automation solutions based on PacDrive 3.

Mitigated Anomalies

PacDrive LMC Controls & I/Os

ID	Description
OEM00069352	For the TM5 modules TM5SE1IC20005 and TM5SE1MISC20005, the counter data type is corrected (DWORD).
OEM00069411	Functions returning a large amount of data (for example, with an ARRAY[0..1023] OF STRING[255]) triggered a watchdog error message.
OEM00070481	After a project download, the EtherNet/IP scanner started with the diagnostic message: <code>Module not found</code> .
OEM00071401	TM5CSLCx00FS (Safety Logic Controller) did not start if the SLC was the first device in the Sercos ring.
OEM00071989	A <code>Not enough memory on device</code> exception detected in a Logic Motion Controller during download triggered a watchdog error message.
OEM00074169	An OPC UA server detected a <code>page fault</code> in the Logic Motion Controller when an OPC UA client initialized an OPC UA item with the value <code>OPC_Quality_BadWaitingForInitialData</code> .
OEM00076495	The internal function <code>TranslateBrowsePathsToNodeIds</code> of the OPC UA server terminated with an error and returned the diagnostic code <code>BadNoMatch</code> during a client request.

Lexium52 / 62 / 62 ILM

ID	Description
OEM00055840	Lexium 62 Double Drive with two different <code>InverterEnable</code> : A rising edge on the <code>InverterEnable</code> input for drive B caused a peak current in drive A. The diagnostic message <code>8107 Overcurrent</code> was displayed and a jerk was detected in drive A.
OEM00074423	A new Lexium 62 firmware was successfully updated with a legacy Device Assistant . Nevertheless, the drive did not operate after the update. No diagnostic message was displayed.

M241/M251

ID	Description
OEM00060178	Different versions of the <code>IoDrvModbusSerial</code> library were added to the Library Manager when using the Modbus IO Scanner with different controllers.
OEM00063394	After disconnecting the CANbus connection of a J1939_ECU device, the device in the Devices tree was still displayed in green color and the status of the J1939_ECU device was still displayed as running.

ID	Description
OEM00066740	The Task Configuration → Monitor tab displayed more tasks than the number of tasks that had been configured.
OEM00068203	The Input Assistant did not provide instances of the HSCSimple counter.
OEM00068334	Configuring fast outputs (pulse generators) for an M241 controller caused a shutdown of the programming software.
OEM00069524	The Relocation Table editor allowed to assign variables outside of the dynamic memory area (read and write).
OEM00069581	Relocation Table : Downloading an application was possible even though the relocation table provided invalid values.
OEM00071569	The NetManage tool provided incorrect information when connected to an M241 controller by a TM4ES4 Ethernet communication module.
OEM00073294	Using a PTO (Pulse Train Output) with an M241 controller configured in homing mode <code>ShortReference_Reversal</code> did not operate correctly. The movement did not end as intended.
OEM00075330	FDR (Fast Device Replacement) service authentication is successful now when IP mode is set to DHCP.
OEM00072090	Using the Modbus TCP IO Scanner , the inputs no longer keep the former values after an application download.
OEM00076970	EtherNet/IP Scanner is more stable now after an online change (no timeout).
OEM00077608	The file system is no longer corrupted after multiple manually executed HTTP requests with long URL addresses.
OEM00077471	Using the <code>FB_ControlClone</code> (to control cloning of a M241 controller) is possible now when the user rights are activated.
OEM00072657	X-Frame-Options header is now protected against clickjacking (user interface redress attack).
PEP0502989R	Communication with Festo motor controller CMMO/CMMP devices can be established now.
PEP0310789R	The Modbus TCP connection timeout is adjusted now.
PEP0351007R	The Ethernet connection is interrupted no longer when receiving Modbus TCP requests not written correctly.
PEP0439107R	The communication between the Controller Assistant and an M241 controller is possible now when connecting to the second ETH2 network interface.
PEP0408448R	Misleading error log messages in the M241 controller log file are removed.
PEP0428747R	The status of the homing function block is correct now when using homing mode 20.
PEP0444388R	Loading/storing of data parameters table in the webserver is improved.

Known Operational Anomalies

PacDrive LMC Controls & I/Os

ID	Description
OEM00054944	It is not possible to establish an EtherNet/IP connection when the EtherNet/IP device (ATV32/IL*) is connected directly to the controller. You must add a switch between the controller and the EtherNet/IP device.
OEM00070704	If EcoStruxure Machine Expert and previous SoMachine Motion versions are installed in parallel on the local PC, the Controller Assistant provides a firmware version for selection that does not match.
OEM00072576	One of two EtherNet/IP adapters does not work when C2C master is enabled by default. Workaround: Disable the EtherNet/IP adapter by default and enable it with Reconfigure FB (CAA Device Diagnosis library).
OEM00076369	Modifications are detected for persistent variables, although the persistent variables were not modified. This occurs if a 128 Mb Compact Flash (CF) memory card is used.
OEM00076650	Too many fieldbus participants with too much data can lead to the following error message: EtherCAT Master: Download busconfiguration to NetX...

Lexium 32

ID	Description
MK-733	Using the LXM32S do not map more than 6 additional IDNs to the cyclic data. NOTE: Lexium32S TouchProbe is counted as 4 IDNs and diagnostic message S-0-0390 is counted as 2 IDNs.

Lexium 52 / 62 / 62 ILM

ID	Description
OEM00063956	ILM motor: If the Kendrion brake is used, the voltage value for the holding brake is set to the minimum value required by the brake. This minimum value is monitored. Deviations during measuring can cause malfunctions of the brake. NOTE: See important hazard message after the table.
OEM00065793	If you use a Lexium 62 drive (LXM62) in open-loop control and set <code>RefVelocity = 0</code> , a current value is displayed in the monitoring trace diagram, even though no current value was expected in open-loop control.
OEM00069062	Diagnostic code 8123 is reported for one of the axes at standstill: An application containing a master axis with a Cam and other axes at standstill reports the diagnostic code 8123 when testing under specific conditions.
OEM00069830	A Sercos run-up with a double-line topology is not possible for Lexium 62 drives.

ID	Description
OEM00070988	The Lexium 52 drive does not boot after firmware update (version 1.54.10 -> 1.54.23).
OEM00072092	Your application contains a Lexium 62/ILM 62 drive with safety-related modules (LXM62/ILM62 Safety Module). If you reboot the Sercos network, the diagnostic message 8169 Sercos Slave comm. disturbance detected is displayed in the message logger.
OEM00073627	Using an MH3 motor with a Sinus/Cosinus encoder connected to a Lexium 52/62 drive triggers the diagnostic message 8908 Unintended motor operation detected.
OEM00074275	Lexium 62 Plus: After online modification of parameters and then a phase down and phase up in a different topology, modification of parameters of type ES is no longer possible.
OEM00075885	Lexium 62 Plus: Flashing of state LED during device identification on single drives and advanced drives is slower (2 Hz) than on double drives.
OEM00077378 (OEM00073129)	Lexium 62 Plus: A sequence of Sercos topology modifications may lead to a Sercos error message.
-	Lexium 62 Plus: The diagnostic message 8503 Service service channel error detected is triggered at phase up if one of the following parameters is configured as a real-time parameter: UserDefinedStopJerk, UserDefinedStopDeceleration, TrackingDeviationLimit.
-	Lexium 62 Plus: Firmware update using the device assistant inside virtual machines may not update all drives. Repeated updates may be required.
-	Lexium 62 Plus: Writing the motor type plate for sensorless motors into advanced drives (variant G) triggers an error message, that type plate has not been written. Nevertheless the type plate is available after a reboot of the drive.
-	Lexium 62 Plus: Machine encoder data is not actualized after change of encoder and reinitialization. A power cycle is required.

WARNING

UNINTENDED EQUIPMENT OPERATION

- Verify that movements without braking effect cannot cause injuries or equipment damage.
- Verify the function of the holding brake at regular intervals.
- Do not use the holding brake as a service brake.
- Do not use the holding brake for safety-related purposes.

Failure to follow these instructions can result in death, serious injury, or equipment damage.

M241/M251

ID	Description
OEM00074965	M251: Reading the PLC_R structure via the Symbol Configuration triggers a system watchdog error message.
OEM00077573	Opening a project archive of a SoMachine V4.3 project triggers an error message on the TM4PDPS1 (PROFIBUS).
OEM00075411	M251MESC: For Modicon M251MESC Logic Controllers, the cloning operation to an empty SD memory card (and other scripts like upload and download) does not operate.
OEM00074655	M241/M251: The Online → Multiple Download command is not performed correctly for Modicon M241 / M251 Logic Controllers: When an application with two controllers has been modified and the Multiple Download command is executed, the application is not downloaded to one of the controllers. Workaround: Execute the Build → Clean All command before executing the Online → Multiple Download command.
OEM00074733	The default values of cartridge outputs are not applied in the same way during RUN->STOP and RUN->RESET WARM transitions.
OEM00076481	Malformed frame within WebVisualization communication could cause a reboot of M241/M251.
OEM00077573	An error message is displayed for the TM4PDPS1 library (Profibus) after opening a project archive generated with SoMachine V4.3. Workaround: Set the correct version (legacy version) manually in the Library Manager .
OEM00072286	Default values remain enabled during RUN->STOP transition even if removed from the application.
OEM00077925	During migration of an application from SoMachine V4.3 (with user rights enabled) to EcoStruxure Machine Expert, the user rights are not automatically converted before being downloaded to controller. You cannot log in into the controller. Workaround: Use a script stored on the SD card executing the command <code>delete /usr/*</code> or performing a firmware update from the SD card.

M262

ID	Description
OEM00077150	TcpUdpCommunication library: At first startup after firmware update, the certificate store is not ready. An application that includes TLS communication needs a second startup.
OEM00077207	M262: If an M262 is used as an EtherNet/IP Scanner and as an EtherNet/IP Adapter simultaneously, some devices may be temporarily disconnected. Workaround: Do not use an M262 as a scanner and an adapter simultaneously. Use Modbus or OPC-UA as adapter.
OEM00076809	M262 Motion Controllers do not support the EtherNet/IP Scanner if used on the same port as the Sercos devices.

ID	Description
OEM00076721	M262: If a Modicon M262 Logic/Motion Controller is connected via a USB interface, a restart is required to allow a connection to the controller after a network scan has been performed. Workaround: After the M262 has been commissioned via a USB interface, unplug the USB interface and restart the M262.
OEM00076657	M262: When a network scan is performed, the EtherNet/IP connection to the Modicon M262 Logic/Motion Controller is sporadically disconnected without any message indicating the loss of connection.
OEM00071051	Tasks of type Freewheeling must have a minimum cycle time of 3 ms.
OEM00072876	NVL/GVL (Network Variable List/Global Variable List) only works if an Ethernet cable is plugged in the Ethernet port 1.
OEM00073473	TM5NS31 requires the firmware version 2.74 or greater.
OEM00073787	WebVisualization with trace objects significantly increases the processor load.
OEM00074101	The Sercos master does not provide network configuration parameters for Sercos slaves (IP address, subnet mask, gateway).
OEM00074106	TM5NS31 scan time on the TM5 bus is only taken into account after the next power cycle of TM5NS31.
OEM00074841	SSL connection is noticeably slow if client has chosen a cipher suite that uses DHE/ECDHE key exchange.
OEM00075485	Adding a TM5NS31 and I/O modules to a Sercos network impacts the M262 cycle task.
OEM00075670	WebVisualization: SelfAwareness variables cannot be used directly inside a WebVisualization.
OEM00076315	The diagnostic structures of PLCSystem/PLCSystemBase library (for example <code>PLC_R</code>) cannot be accessed directly from external monitoring devices through the Symbol Configuration . They first must be copied to local variables.
OEM00076939	All nodes in a ring topology need to support RSTP (rapid spanning tree protocol).
OEM00076940	EtherNet/IP Scanner: A "stateful" firewall keeps in its memory the connections flow. If such a firewall is defined, the EtherNet/IP traffic from slaves sending their assemblies in multicast may be blocked. So this firewall mode must not be used in this case.
OEM00077157	OTB devices may not respect the scanner RPI (Requested Packet Interval) when TM3 analog modules are configured.
OEM00077199	After transferring an application using an SD card, a TM3XHSC module may restart with an error message. A power cycle restores the correct operation.
OEM00077237	User rights: You are asked twice to enter the default administrator credentials at activation.
OEM00077280	Using the <code>PLCO.MC_TouchProbe</code> with an invalid argument for <code>ifTrigger</code> is not managed as expected.
OEM00077663	If a firmware update using an SD card completes with a steady yellow SD card LED, repeat the firmware update operation.

ID	Description
OEM00077713	When you are modifying the user rights, ensure that no external equipment are trying to access M262 variables with former credentials.
OEM00077807	TM3 bus cycle time must not be set to a value greater than 200 ms when TM3XHSC modules are configured.
OEM00077830	NbOfIncs and NbOfUnits values must be $< 2,147,483,647 (2^{31})$, else the capture is invalid.
OEM00077839	The boot time of a controller increases when the number of files increases.
OEM00077915	The PWR LED turns to red when the internal temperature is $> 80^\circ$ (instead of $> 100^\circ$).
OEM00076745	<p>If EcoStruxure Machine Expert is running in a Virtual Machine (VMware), M262-USB may conflict with the VMware:</p> <ul style="list-style-type: none"> • USB communication is inoperable. • The controller is not discovered in: <i>My Controller/Communication setting</i>. <p>Install EcoStruxure Machine Expert directly on the PC or use Ethernet for PC connection to the controller.</p>
OEM00077894	If SoMachine V4.3 or an earlier version was installed on the computer, the IP address used by the PC is not correct. Thus, the USB communication is not operational. You have to select the network interface SE RNDIS PSX M262 connection under <i>Control Panel/Network and Internet/Network and Sharing Center</i> and set the IP address manually to 192.168.200.2.
OEM00077911	An M262 is not discovered by USB and cannot be connected to EcoStruxure Machine Expert. You have to restart the USB by the gateway. Select the gateway tray application and restart the gateway.
OEM00077940	When OPC UA is configured in the application, the application must be downloaded using the menu command Online → Login (instead of the menu command Online → Download).

HMISCU Controllers

ID	Description
OEM00046432	HMISCU Controller Panels: Sporadically, the communication between the HMI and the controller is interrupted without displaying an error message. You have to restart the HMISCU to re-establish the communication.
OEM00077527	The EcoStruxure Machine Expert Logic Builder command Refactoring → Rename is not available for HMISCU controllers. You must rename HMISCU controllers manually without the Refactoring feature.

Library Information

Version Identification

Description	Version
ApplicationLogger	1.1.2.0
AsyncManager	1.0.5.0
AutoTune	1.3.14.0
Booster Pumping	5.0.0.5
CommonMotionTypes	1.0.1.0
CrankModule	1.3.4.0
EMailHandling	2.0.4.0
EtherNetIP Explicit Messaging	1.1.7.0
EtherNetIP Remote Adapter	1.0.10.0
FileFormatUtility	1.2.6.0
FtpRemoteFileHandling	1.2.3.0
GMC Independent Altivar	1.2.4.0
GMC Independent Lexium	1.1.7.0
GMC Independent PLCopen	1.2.3.0
HttpHandling	1.0.11.0
M262 Encoder	1.0.0.2
M262 PLCSystem	1.0.0.19
M262Diagnostics	1.0.1.0
MotionInterface	1.0.69.5509
MqttHandling	2.0.6.0
PackML	1.2.3.0
PD_AxisModule	1.6.2.0
PD_EDesignAxisModule	2.3.2.0
PD_EdesignCore	2.2.6.0
PD_EdesignCrankModule	1.5.2.0
PD_ETest	1.3.6.0
PD_GlobalDiagnostics	1.3.1.0
PD_MultiBelt	1.4.2.0
PD_MultibeltModule	1.4.1.0
PD_PacDriveLib	1.8.7.0
PD_SmartInfeed	1.4.3.0

Description	Version
PD_SmartInfeedModule	1.3.1.0
PD_SoMotionGenerator	1.5.1.0
PD_Template	1.6.1.0
PLCopen MC part 1	1.0.69.5509
PreventaSupport	1.1.1.0
Robotic	2.12.1.0
RoboticModule	2.8.0.0
SchneiderElectricRobotics	2.8.0.0
SchneiderElectricRobotics Parameters	2.9.0.0
SchneiderElectricRobotics Toolbox	1.2.0.0
SercosCommunication	1.0.1.0
SercosDriveUtility	1.1.1.0
SercosMaster	1.0.69.5509
SlcRemoteController	1.3.6.0
SnmpManager	1.2.1.0
SqlRemoteAccess	1.1.2.0
TcpUdpCommunication	2.0.11.0
TeSys island	1.1.0.0
TimeSync	1.1.2.0
Toolbox	3.2.1.0
TwidoEmulationsupport	1.2.2.0
Unwinder	1.2.2.0
UnwinderModule	1.1.0.0
UserMotorTypePlate	1.3.9.0
UserTorqueFeedForward	1.1.2.0

Version Identification Safety Libraries

Description	Version
EnableSwitch_SE_SF	V0.99 from 10/28/15
PLCopen_SF	V1.00 from 09/14/07
Preventa_SafeMotion	V0100.0100 from 02/08/16

New Features

ApplicationLogger

The controller related dependencies are deleted. The library is now also working on M2•• controllers.

AsyncManager

Offers the functionality to call time-intensive jobs asynchronously to help prevent cycle time overruns without the need to create additional tasks separately.

CommonMotionTypes

This library supports common motion data types independent of the controller platform.

EmailHandling

- The function block `FB_SendEmail` provides parameters for recipients of type CC and BCC.
- Improved online modification behavior:
 - All function blocks in the library can detect an online modification of the application. In the event of a detected online modification while the function block is in progress, all input parameters of type REFERENCE TO and POINTER TO are updated.
 - New global variable `SE_Email.GCL.G_xOnlineChangeAllowed` indicates if an online modification can be performed in executed function blocks out of the EmailHandling library.

FileFormatUtility

- Added function block `FB_CreateJsonFormattedString` which is used to facilitate the creation of a text STRING in JavaScript Object Notation (JSON) format.
- Added function block `FB_WriteFile` which is used to write or append content into a new or existing file on the file system of the controller.
- Improved online change behavior:
 - All function blocks in the library can detect an online modification of the application. In the event of a detected online modification while the function block is in progress, all input parameters of type REFERENCE TO and POINTER TO are updated.
 - New global variable `FFU.GCL.G_xOnlineChangeAllowed` indicates if an online modification can be performed in executed function blocks out of the FileFormatUtility library.

GMC Independent Altivar

- Support for ATV32 and ATV71 are removed.
- Improvement of the function blocks `SetDriveRamp_ATV` and `SetFrequencyRange_ATV`: Errors resulting from write requests inside the function block abort subsequent write commands and will no longer cause communication deadlock.

GMC Independent Lexium

- Integration of LXM32 and ILX CANopen drives.
- Improvement of the function blocks `SetDriveRamp_LXM` and `SetDriveRamp_ILX`: Errors resulting from write requests inside the function block abort subsequent write commands and will no longer cause communication deadlock.
- Integration of Lexium SD328A (CANopen).

GMC Independent PLCopen

`ET_DeviceType` to use this Enum together with the `AxisRefBase` to identify the added axis type.

HttpHandling

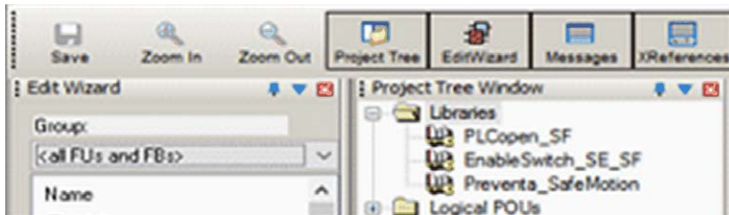
New library providing HTTP client with GET and POST commands.

Library EnableSwitch_SE_SF

The safety-related `SF_EnableSwitch` function block evaluates the signals of a manually actuated three-stage enable switch (in accordance with EN 60204) to identify its switching stage and direction.

Library PLCopen_SF

The safety-related functions or function blocks described within this library are solely intended for creating safety-related code for suitable Safety Logic Controllers using EcoStruxure Machine Expert - Safety software. You can only combine your safety-relevant tasks within the safety-related control system if the tasks are integrated into the execution process in a correct and functionally safe manner as defined in the applicable standards.



Library Preventa_SafeMotion

The safety-related `SF_SafeMotionControl` function block acts as an interface between the Safety Logic Controller and the Safety Module (option module) which is the safety-related component of the ILM62 or LXM62 standard drive.

M262Diagnostics

Library added to gather system information on the M262 controller application and the configured devices in it.

M262 Encoder

Library added to support standard encoder input service for M262 controller.

M262 PLCSystem

Library added to provide read & write services for M262 controller.

MachineAssistantServices

Library added to provide functionality to discover Ethernet devices connected to the controller and to perform commands to detected devices.

MotionInterface

Library added to affect low level access for motion control for M262M•5 controllers.

MqttHandling

- Library added to provide the MQTT client functionality to exchange data with other devices over the network through an MQTT message server.
- Includes feature to establish an encrypted connection to a TCP server.

PackML

- Library is updated to support the ANSI/ISA TR88.00.02-2015.
 - Two new POU's, `FC_SetWarning` and `FC_GetDateTimeAsArray`, are provided accordingly.
 - Five new frame visualizations, `FR_StateDisabled`, `FR_AlarmSingleLine`, `FR_Alarm-HistorySingleLine`, `FR_DateTimeDisplay` and `FR_Warning`, are provided accordingly.
- The variable `GPL.Gc_uiNumberOfMaterials` has been removed.
- The background colors for offline mode in the provided visualizations corresponds now to the color which becomes effective in online mode.
- `FB_ModeManager`:
 - In the event of a detected error during execution (`q_xError = TRUE`) the output `q_xError` is reset.
 - The values of the inputs `i_diUnitMode` and `i_diStateCurrent` are verified only upon a rising edge of `i_xUnitModeChangeRequest`.

- A rising edge of the inputs `i_xUnitModeChangeRequest` and `i_xModeChangeDone` is detected only if output `q_xReady` is TRUE.
- Upon a falling edge of the input `i_xUnitModeChangeRequest`, a detected error during latest execution is reset. A restart of the function block is no longer required.

PD_PacDriveLib

The PacDriveLib Homing functions and function blocks are prepared for use with MachineEncoder. If the MachineEncoder is active, then the EncoderPosition from the MachineEncoder is used for homing.

PLCopen MC part 1

Library added to provide motion control according to PLCopen Motion Control Part 1 v2.0 (formerly parts 1 and 2) for M262M*5 controller.

PreventaSupport

Library added to support diagnostic and maintenance tasks for Preventa safety-related modules.

Robotic

Library added to provide a collection of POUs for controlling robot kinematics.

The following kinematics can be controlled:

- Triaxial delta robot - `IF_RobotConfiguration.Delta3Ax`
- Triaxial cartesian robot - `IF_RobotConfiguration.Cartesian3Ax`
- Biaxial cartesian robot - `IF_RobotConfiguration.Cartesian2Ax`
- Biaxial delta robot - `IF_RobotConfiguration.Delta2Ax`
- Biaxial articulated robot - `IF_RobotConfiguration.Articulated2Ax`
- Four axial SCARA robot - `IF_RobotConfiguration.Scara4Ax`
- Up to triaxial user-defined robot - `IF_RobotConfiguration.User3Ax`

Motion interpolation in order to move to a point in two or three-dimensional space:

- Linear interpolation - `IF_RobotMotion.MoveL`
- Circular interpolation - `IF_RobotMotion.MoveC`
- Spline interpolation - `IF_RobotMotion.MoveS`
- Joint interpolation - `IF_RobotMotion.MoveJ`

RoboticModule

Library added containing the equipment module for the default PacDrive 3 template and auxiliary functions. It includes the functionality of the Robotic library.

- The interfaces of the provided equipment module enable an integration into the default PacDrive 3 template.
- RoboticModule provides the operation modes Auto, Homing, Manual and BrakeRelease.

SchneiderElectricRobotics

Library added containing function blocks to parametrize a Schneider Electric robot.

SchneiderElectricRobotics Parameters

Library added containing the parameters for a Schneider Electric robot.

SchneiderElectricRobotics Toolbox

Library added to provide provides structures, functions and function blocks for the following purposes:

- Read the protocol of a camera.
- Send data, for example, to simulate the protocol of a camera.
- Generate random Cartesian poses.
- Parameterize and generate a list of targets.

SercosDriveUtility

Library added to read and write drive configurations using the Sercos III fieldbus network.

SercosMaster

Library added to provide low level access to the Sercos master for M262M+5 controllers.

SlcRemoteController

- The command `ET_UserCommand.SetSafeKeyPassword` added for the function block `FB_RemoteController`, to allow setting or modifying the password on the SafeKey. Execute this command to set a password before downloading the application using the function block `FB_DownloadApplication`.
- The library is compatible with M262 by substitution of `PacDriveLib` dependency with generic `AsyncManager`.

TcpUdpCommunication

- Fix of an anomaly in buffer handling on receiving messages with fill level greater than 65535 bytes.
- Corrected behavior: In case of an interruption of the connection while sending or receiving data, the property `State` indicates `ShutDown` and the property `Result` indicates `ClosedByPeer`.
- The property `IsReadable` is reset if the connection is interrupted.
- The function block `FB_TcpClient` provides the property `SocketOpt_CustomPort` which is used to specify the port used by the client for the next connection.
- The function block `FB_TcpServer` provides the property `SocketOpt_LingerEnabled`. This property is used to enable or disable the socket option `Linger` influencing the behavior on closing a connection.

- The processing of methods is no longer influenced by online monitoring of certain properties at the same time.
- The library offers functionality to establish TLS encrypted TCP connections.

TeSys Island

- Library added to provide function blocks to develop applications for TeSys island.
- The function blocks manage the digital functional object known as Avatar by:
 - controlling Avatars.
 - reading diagnostic information from Avatars.
 - reading energy data from Avatars.
 - reading asset data from individual modules of TeSys island.

UserMotorTypePlate

The function block `FB_InitMachineEncoder` is included to initialize the machine encoder with a typeplate (the machine encoder object is available on Lexium 62 Advanced Plus).

Examples

New example projects:

- XML file handling example
- CSV file handling example
- Email handling example
- MQTT example using JSON format
- Machine Advisor communication example

Updated example projects:

- PackML example updated according to the library update
- RTC TimeZone example with SNTP client
- SLC remote controller example

New function template:

- HTTP client

Mitigated Anomalies

Libraries

ID	Description
OEM00052518	MTP.FB_MotorDataRead: Improved diagnostic message if no type plate is stored in the drive.
OEM00071708	PacDriveLib library: After disabling the function blocks FB_HomeForce and FB_HomeTorque, all outputs are reset.
OEM00071904	MultiBelt Library: The parameter xLeaveStation of ST_Station is now compatible with indexed stations.
OEM00075161	SmartInfeed library: After SI.FB_Infeed.i_xStart := FALSE, the state machine is now finished correctly. To achieve this, a new GPL parameter was added: Gc_lrMasterMotionActiveVelLimit Internal velocity limit parameter to verify in FB_Infeed if the master of the InfeedBelt is in motion.
OEM00060445	TcpUdpCommunication library: You can access the properties of the FB_TcpServer function block from different tasks. The InputOutOfRange message is no longer reported.
OEM00069263	EMailHandling library: By setting GVL.Gc_udiMaxNumberOfAttachmentPaths to a value greater than one, the function block can receive more than one email.
OEM00064768	GMC Independent Altivar library and GMC Independent Lexium library: You can use now ET_DeviceType together with AxisRefBase to identify an added axis type.
OEM00043940	IoDrvModbusSerial library: It is now possible to write a single register and to initialize a slave.
IECLIB-1708	GMC Independent Altivar library: Active movements of Altivar drives are stopped now if the application is set to stop.

Known Operational Anomalies

Libraries

ID	Description
OEM00056474	<p>AxisModule library: The command <code>ET_Cmd.StartTrigWaitInPos</code> is sent to the <code>FB_AxisModule</code> to perform a positioning while the command is active, the input <code>iq_diCmd</code> is overwritten by the value 0.</p> <p>In this situation, the <code>FB_AxisModule</code> triggers the diagnostic message <code>UnexpectedProgramBehavior</code> (<code>DiagExt = UnknownCase</code>).</p> <p>Workaround: Re-enable the function block to quit the diagnostic message.</p>
OEM00072319	<p>SmartInfeed library: Using the <code>ET_TargetGeneratorMode.External</code> in combination with the <code>FB_VelocityRatioAlgorithm</code> and defining an invalid target position triggers a page fault exception.</p>
OEM00073262	<p>MultiBelt library: If the start station is defined as a <code>PassBy</code> station, the second train remains in arriving state (<code>ET_TrainState.Arriving</code>).</p>
OEM00073263	<p>MultiBelt/MultiBeltModule library: Under certain conditions, after stop and warmstart of a <code>MultiBelt</code> module, the <code>ET_DiagExt</code> message <code>TrainMovesBackward</code> is displayed.</p>
OEM00074810	<p>Unwinder library, precontrol movement by an external master (bobbin radius changes): The <code>Setpos</code> value for this movement is incorrect if <code>DRV_WinderRight.Direction = left</code>.</p>
OEM00075899	<p>MultiBelt/MultiBeltModule library: The <code>q_xHomeOk</code> bit of all trains is set to <code>TRUE</code> in homing mode <code>HomeOnTp</code>, even if the homing procedure was stopped due to missing <code>TouchProbe</code> signals.</p>
OEM00076350	<p>Unwinder/UnwinderModule library: A basic load is required when the unwinder is empty. The basic load value is replaced by the calculated value but the calculated value should be added to the basic load value.</p>
OEM00076417	<p>MultiBelt/MultiBeltModule library: Under certain conditions, a train starts moving backwards after a coldstart, but is stopped immediately. An error message is displayed.</p>
OEM00074744	<p>SystemInterface library: Calling the <code>FC_TPEdge</code> triggers the diagnostic message <code>8902 Software error (page fault)</code> in the RTP (Real Time Process) task, and the controller displays a hardware watchdog message.</p>
OEM00077150	<p>TcpUdpCommunication library: At first startup after firmware update, the certificate store is not ready. An application that includes TLS communication needs a second startup.</p>
OEM00077914	<p>TcpUdpCommunication library: If more than one secure (Transport Layer Security) TCP server is active at the same time, a system watchdog may occur due to a higher system load. Therefore, only one instance of a secure (TLS) TCP server must be active.</p>
MK-778	<p>The namespace has changed from S3M to SLCD (contrary to the editor description). The following function blocks are affected: <code>FB_ReadSlcBootState</code>, <code>FB_ReadOpenSafetyState</code>, <code>FB_ReadSafeOsState</code>.</p>

Software Information

Version Identification

Description	Version
Machine Expert Installer	11.19.16801
Diagnostics	18.0.10.0
Controller Assistant	18.0.10.0
Device Assistant	18.0.10.0
DiffViewer	18.0.10.0
Gateway	18.0.10.0
Launcher	18.0.10.0
OPCServer	3.5.12.70
SoftSPS	3.5.12.80
SVN	4.2.4.0
Logic Builder ⁽¹⁾	1.1
Vijeo-Designer	6.2.8.1016
CoDeSys	V3.5 SP12 Patch8 HF1
SQL Gateway	18.0.1.0
Motion Sizer	4.1.0.0
(1) If using a virtual machine, the download of the online help operates correctly only if the option Accelerate 3D graphics is deactivated in the VM settings.	

New Features for Machine Expert Installer and Online Help

Machine Expert Installer

The Machine Expert Installer provides an intuitive user interface to perform an online installation. During installation phase, you can select required sets which will be automatically downloaded and installed.

You can also use the Machine Expert Installer to customize an existing installation of the EcoStruxure Machine Expert product.

Online Help

With EcoStruxure Machine Expert, the online help is published as HTML5 help only on a Web server. You can download a local copy of the online help using Machine Expert Installer.

Known restrictions on different browsers used with the HTML5 help:

Browser and Version	Restriction	Workaround
Internet Explorer V11	<p>Poor graphic / display quality</p> <p>If the HTML5 help is located on a local PC, then:</p> <ul style="list-style-type: none"> ● Contents are blocked. ● Help pages cannot be opened. <p>NOTE: When the HTML5 help is located on the Web, the restrictions do not exist.</p>	<p>–</p> <ol style="list-style-type: none"> 1. Open the Internet Explorer and go to Tools -> Internet Options. 2. Click the Advanced tab and scroll down to the Security section. 3. Enable the check box Allow active content to run in files on My computer.
Chrome V63	<p>If the HTML5 help is located on a local PC, then:</p> <ul style="list-style-type: none"> ● Printing subtopics is not supported. ● Changing the topic language is not supported. <p>NOTE: When the HTML5 help is located on the Web, the restrictions do not exist.</p>	<p>–</p>
Edge V40	<p>If the HTML5 help is located on a local PC, then:</p> <ul style="list-style-type: none"> ● The contextual help opens only the individual topic, but not the HTML5 GUI. <p>NOTE: When the HTML5 help is located on the Web, the restrictions do not exist.</p>	<p>–</p>

New Features EcoStruxure Machine Expert

Project Update

- Project update categories are separated in single pages.
- Overview page summarizes the update actions: sufficient in most cases.
- Details for update of different parts of the system in separate tabs.
- Update of visualization styles added.
- Detailed information on library update enhanced by presenting the updated list of libraries.
- Display of progress status added.

NOTE: When you update a SoMachine project which contains solution libraries (Pumping, Packaging, Hoisting) to EcoStruxure Machine Expert, the solution libraries will not be updated. You have to replace the Pumping library manually by the Booster Pumping library. Hoisting and Packaging libraries are not supported by EcoStruxure Machine Expert V1.1.

Functional View

- A view has been introduced to group the project objects by logical machine units.
- These groups can be saved and re-used in other projects.

Smart Template

The Smart Template has been conceptually redesigned to open the framework beyond Robotics functionality.

The benefits of the revised version of Smart Template are:

- You can start to program with a default project and can add smart template functionality afterwards. Robotics projects can now be under SVN control and support folder structures.
- Can be used for more than one controller in a project. Smart Template functions or modules can be added to several controllers in a project.
- Supported SVN-functionality. Smart Template modules are handled in SVN (commit, update...) like any other POU in the system. Sub-elements (configuration, methods, ...) are considered appropriately.
- Smart Template is open for new IEC-frameworks. The modules are self-describing and no longer limited to a specific infrastructure like PacDrive Template. Basically any IEC-environment can be used from zero to maximum.

Supported Features:

- **Modules** view

Smart Template module instances can be added in an own view called **Modules**.

- **Add module / Add object**

Modules can be added using the **Add module** dialog providing more information and flexibility in terms of versioning, etc. Currently the following modules and objects are usable:

- Camera module
- Camera configuration
- Module interface

- Method
- Action
- Transition
- Notes
- **Module manager**
 - Key element to manage several modules, their version and their referenced libraries.
 - Modules can be updated as easy as libraries.
 - The user code, the user configuration and the resolved library version are used to generate the code for smart template
- **Camera Module**
 - Supports the known functionality to connect vision systems - generic cameras and specific for Cognex cameras.
 - Online views allow to see the camera status, the position of products identified.

Migration Strategy of Smart Template

As the old Robotics for SmartTemplate-Framework is not supported any longer, the code and configuration has to be transferred to a new **Standard** project.

1. Create a new empty project in EcoStruxure Machine Expert.
2. Copy and paste the source code.
3. Add the modules to the new project via **Add module** and adapt the configuration according to the old project.

Code Analysis

Code Analysis add-on was improved and stabilized.

- New metrics (cyclomatic complexity)
- Compile messages as part of the convention results output.
- Analysis of libraries (POU-space analysis) is supported now.
- User interface and scripting API for machine advisor code analysis connection to upload snapshots and queries

ETEST

ETEST improves the usability and the handling of integration in Continuous Integration systems, especially when working with big and/or long running test projects.

- Optional test case methods
 - The ETEST standard methods (**Prepare, Execute, Finalize, CleanUp**) are optional for test cases and test resources
- Test duration
 - The test results view shows the duration of each executed test case.
 - The exported result file contains the start, end time and duration of each test case.
- Test progress:

- The result of each test case will be printed to the shell console, if executed via scripting.
- You always know which tests are already finished in long-running test-series.

Diagnostics

- Diagnostics supports the Safe Logger for safety-related devices.
- Support for Lexium 62 Standard Plus and Advanced Plus.

Controller Assistant

Support for Lexium 62 Standard Plus and Advanced Plus.

Device Assistant

Support for Lexium 62 Standard Plus and Advanced Plus.

New Features for EcoStruxure Machine Expert - Safety

Overview

- EcoStruxure Machine Expert - Safety component distribution / installation using Machine Expert Installer together with the EcoStruxure Machine Expert components (Install new Software (Online) (*see Machine Expert Installer, User Guide*)).
- Floating licenses: New license type for EcoStruxure Machine Expert - Safety and BWU2984 AS-i safety gateway available.
- Embedded Safety integration into TM262M• controller architectures. (TM5CSLCx00FS, TM5/TM7 Safety I/Os).
- Online Help:
 - HTML 5
 - Online help (safety and non-safety parts)
 - Offline help (safety)
- Support of context-sensitive help in EcoStruxure Machine Expert - Safety.
- Integration of latest help and documentation content.
- Update to EcoStruxure Machine Expert product changes.
- Fixed documentation issues of previous versions.
- Lexium 62 with new hardware revision is supported (no change on safety functionality).
- Updated EULA (End User License Agreement)

Compatibility EcoStruxure Machine Expert

Overview

EcoStruxure Machine Expert can be installed in parallel to other Schneider Electric software products, such as SoMachine and SoMachine Motion.

For general information on compatibility of EcoStruxure Machine Expert, refer to the Compatibility and Migration Guide (*see EcoStruxure Machine Expert Compatibility and Migration, User Guide*).

Behavior Modifications in EcoStruxure Machine Expert compared to SoMachine / SoMachine Motion Versions

NOTE: For a list of compiler versions included in EcoStruxure Machine Expert, SoMachine and SoMachine Motion versions indicated in the following table, refer to the Compatibility and Migration Guide appendices (*see EcoStruxure Machine Expert Compatibility and Migration, User Guide*).

ID	Description
OEM00071037	Firewall: The file name Firewall is case sensitive. Only a default firewall file, named FirewallDefault.cmd , is recognized.
OEM00071000	I/O Mapping: Modified behavior of Default Value . If the compiler version is EcoStruxure Machine Expert V1.1or later: You can edit this field only, when mapping an input/output to a new created variable. When mapping to an existing variable, the initialization value of the variable is used as the default value. Selecting a compiler version earlier than EcoStruxure Machine Expert V1.1 , the default values can also be edited and are applied in case of mapping to an existing variable or to no variable. When importing projects from SoMachine / SoMachine Motion, default values are still imported for the cases above, but are not visible and not applied, as long as the compiler version is \geq EcoStruxure Machine Expert V1.1. See also OEM00072811.
OEM00071094	Trace: Multi-selection of variables in the Trace Record part of the Trace Configuration dialog is not supported.
OEM00071748	Tabular Declaration: The number of variables in online mode is limited to 1000.
OEM00071929	Online Change: Adding a library opens the Online Change dialog, even if nothing was used out of this library. After confirming this dialog, the message Code has not changed. No online change necessary is generated.
OEM00072060	Auto-Declare: Using a statement like <code>IF Var_0 OR Var_1 THEN</code> triggers an auto-declaration proposal of INT instead of BOOL.
OEM00072474	SVN: After checking out a project from SVN and closing the project, an entry is created in the Recent files menu, even though the corresponding file has not been saved. Selecting this entry will fail to open the project with an error message.
OEM00072745	Compiler: Bool is not supported as a base type in enumerations and causes a compiler error message. Only Integer data types are supported.

ID	Description
OEM00072811	<p>I/O Mapping: Reset Mapping does not delete default values. Reset Mapping deletes the variables in the I/O Mapping. If a Default variable was associated with such a deleted variable, this is no longer shown and applied. However, creating a new variable for the same I/O will bring back the old Default value. Note, that you can only modify the Default value, when you have created a new variable first. See also OEM00071000.</p>
OEM00073255	<p>Find: The Find command is associated to the shortcut Ctrl+F. The shortcut only works, when an editor window is open.</p>
OEM00073314	<p>FBD: If the FBD option Connect boxes with straight lines is selected, connection lines (links) between function blocks may overlap.</p>
OEM00074431	<p>Auto-Declare Using a statement like <code>ptVar := ADR(var);</code>, where <code>ptVar</code> is declared a <code>POINTER TO INT</code>, will lead to an auto-declaration proposal of <code>POINTER TO INT</code> for <code>var</code>, instead of <code>INT</code>.</p>
OEM00074574	<p>Auto-Declare: Using a statement like <code>GVL.toto := bool_1;</code>, where <code>bool_1</code> is declared as <code>BOOL</code> and <code>GVL</code> is the name of a <code>GVL</code>, causes an autodeclaration proposal of <code>INT</code> for <code>toto</code> instead of <code>BOOL</code>.</p>
OEM00074609	<p>Reset Cold/ Reset Warm: Breakpoints that were activated before executing the commands are still active after the execution of the command. (In <code>SoMachine / SoMachine Motion</code> they were deactivated).</p>
OEM00074647	<p>Auto-Declare: Using Auto-Declare from a POU will not offer an already existent <code>PersistentVars</code> as object, except if selecting in the following order: PERSISTANT and RETAIN followed by VAR_GLOBAL as scope.</p>
OEM00074787	<p>SysTimeRtc: The actual behavior of functions <code>SysTimeRtcConvertHighResToLocal</code>, <code>SysTimeRtcConvertLocalToHighRes</code>, <code>SysTimeRtcConvertUtcToLocal</code> and <code>SysTimeRtcConvertLocalToUtc</code> is compliant to the defined <code>TimezoneInformation</code> (struct) definition of member <code><iBias></code> (which itself is based on Windows Definition), where <code>UTC = localtime + bias</code>. Therefore, the bias for eastern longitude is negative and the bias for western longitude is positive.</p>
OEM00076496	<p>Project Compare: New menu command Project - Commit t accepted changes. The command is also available as toolbar button and allows to commit already accepted differences from the project comparison to the current project. Thus, you are no longer limited to committing differences accepted in one compare view only. Instead you can determine the time and extent of the Commit.</p>
OEM00076869	<p>Project Export/Import: After exporting modules, when importing the modules are reordered alphabetically by module name.</p>
OEM00071445	<p>ProfiNetIO-Controller (Master): New parameters on the General tab: I/O provider/consumer status. Parameter Application stop > Substitute values : When the user stops the application, the provider state is set to BAD. The slaves then set the inputs and outputs to predefined substitute values. For more details refer to the Online Help.</p>

ID	Description
OEM00074786	<p>SFC - Init step: For the compiler version of EcoStruxure Machine Expert V1.1 or later the <code>Init</code> step counts from the program start moment (not from the system start moment. Additionally, triggering <code>SFCInit</code> or <code>SFCReset</code> flag resets the <code>Init</code> step time to zero.</p>
SP12CDS-57549	<p>Compiler, I/O Mapping: Task deployment for function blocks used in initial values. For the compiler version of EcoStruxure Machine Expert V1.1 or later: only these tasks will be used as update task for function block instances with I/Os, in which an access to the I/Os can be detected, or in which the instance is called directly. This behavior may lead to a smaller number of output updates. For example, if a function block instance is declared in a program, but there is no direct call of this instance, there will be no update in the task in which the program is called. Direct call means, that calls via interface are not considered. You can manually edit the tasks in which to update I/Os in the I/O configuration.</p>
SP12CDS-56915	<p>Compiler: A Bit-located Bool variable assigned to a <code>REFERENCE TO BOOL</code> variable generates a compiler error. For the compiler version of EcoStruxure Machine Expert V1.1 or later, a compiler error is generated when assigning a <code>BOOL</code> variable located on a bit address to a <code>REFERENCE TO BOOL</code> variable. Workaround: assign the bit located variable to a Boolean variable first and assign the latter to the <code>REFERENCE</code> variable.</p>
SP12CDS-59141	<p>Compiler: Unexpected online change related to the usage of the <code>PersistentVars</code> object with attributes. For the compiler version of EcoStruxure Machine Expert V1.1 or later, the order of attributes in a <code>PersistentVars</code> list object is always fix (sorted lexically). Opening projects without update, that contain a compiler version earlier than EcoStruxure Machine Expert V1.1 and attempting to login may request an online change in the above-mentioned case. Project Archive: Sending a project archive via mail directly from the Save Archive dialog is not supported in EcoStruxure Machine Expert V1.1 (64-bit) due to MAPI limitations.</p>
SP11CDS-35119	<p>Trace: flexible assignment of variables to diagrams. EcoStruxure Machine Expertsupports configuring one or more diagrams within the trace and displaying one or more variables, allowing a flexible arrangement of these variables within the diagrams. All diagrams share the same time axis, but the appearance including the Y-axis can be configured separately for each diagram. Download and Upload diagram configurations to the PLC and Save and load diagram configurations in the trace.csv format are not supported. When opening projects containing Single-/Multichannel traces, they will be displayed in an equivalent way. The former menu command Multichannel (changing the view only) was replaced by two new commands Convert to Single/Multi Channel, which modify the configuration accordingly.</p>
SP11CDS-52137	<p>Compiler: Compiler Error message for libraries with invalid namespace. For the compiler version of EcoStruxure Machine Expert V1.1 or later, a compiler error will be generated for library namespaces that are not valid identifiers according to IEC 61131-3.</p>

ID	Description
SP11CDS-47465	<p>Runtime: Default values: STOP to STOP over Reset behaves differently than RUN to STOP over Reset.</p> <p>Default values for direct addressed outputs are set, if application is in stop, and a reset is executed. Previously, the direct addressed outputs were not reset in this scenario.</p>
SP10P10CDS-50882	<p>ScriptEngine: IronPython behavior regarding reading files.</p> <p>Within IronPython, Byte Order Marks (BOM) at the start of files are not implicitly skipped any more, which may lead to a different behavior of scripts parsing files, for example using the ConfigParser module. Open these files using <code>codecs.open()</code>.</p>
SP10CDS-43667	<p>Compiler: Initialization (order) of DUT structures</p> <p>For the compiler version of SoMachine Motion V4.4 or later, the initialization order of arrays of Data Unit Types..</p> <p>Example:</p> <pre>arr : ARRAY [0..1] OF DUT := [(a := 1), (a := 2)];") is: FOR i := 0 TO 1 DO arr[i].FB_Init; END_FOR arr[0].a := 1; arr[1].a := 2; Where the order for compiler version < V4.4 Motion was: arr[0].FB_Init(); arr[0].a := 1; arr[1].FB_Init(); arr[1].a := 2; Additionally, if a DUT variable is initialized by assigning another variable, as in: xx : DUT := yy; with compiler version SoMachine Motion V4.4 or later, there will also be a FB_Init call in this case.</pre>
SP10CDS-47295	<p>Compiler: C0405 multiple assignments to interfaces variables not allowed.</p> <p>For compiler versions of SoMachine Motion V4.4 or later, a compiler error is generated for constructs like:</p> <pre>itfVar1 := itfVar2 := 0;</pre>
SP10CDS-49943	<p>Symbol Configuration: Properties with monitoring type variable.</p> <p>For the compiler version of SoMachine Motion V4.4 or later, properties with monitoring type variable are exported read-only in the Symbol Configuration.</p>
SP10CDS-49852	<p>Project User Management: Settings: New hash format for passwords.</p> <p>Hashes for user passwords can now be stored with a new format, which supports salt and a new hash algorithm, improving the security of a password against guessing and brute-force. The password hash of a user is converted with the first login after the setting was changed.</p> <p>The project loses its backward compatibility with the conversion to the new password hashes. You can convert the new password hashes back by disabling the setting and re-login of every user, which logged in during the time the setting was enabled. Another option is to set a new password for every user (that logged in while the setting was enabled).</p>
SP10CDS-49093	<p>Online Change: Programming system with .Net 4.6 Framework.</p> <p>In projects using Webvisualization it might not be possible to login without an Online Change, if the project contains an Imagepool object, referencing the same image more than once.</p>

ID	Description
SP10CDS-25116	<p>Gateway, RTS: nodeName limitation to 50 characters: The nodeName of controllers (as displayed in the Communication Settings dialog) is now limited to 50 wide-char characters (including NULL termination). If a controller with a longer node name is updated to a SoMachine Motion V4.4 version or later, the node name is cut to this limit. Clients like PLCHandler or OPC Server cannot connect when using the old, longer nodeName. In this case, you need to update the connection parameters of the affected clients and/or rename your controller.</p>
SP9CDS-47453 / OEM00061201	<p>Online Change: Handle out of memory exception For compiler versions of SoMachine Motion V4.4 or later, in the case of memory outage during online change, a compiler error C0398 will be generated.</p>
SP9CDS-46022	<p>Compiler: AT declaration in VAR_TEMP, VAR_IN_OUT and VAR_CONSTANT. For compiler versions of SoMachine Motion V4.4 or later, a compiler error C0392 is generated if an AT declaration is used inside one of the following blocks: VAR_TEMP, VAR_IN_OUT and VAR_CONSTANT.</p>
SP9CDS-45977	<p>Compiler: Assignment of function block outputs to interfaces. For compiler versions of SoMachine Motion V4.4 or later, the assignment is not supported, a type mismatch error is reported for the following case: fbUser(fbOut => iMain);</p>
SP9CDS-43812	<p>Compiler: __ISVALIDREF returns TRUE for check of interface instance with value zero. __ISVALIDREF is a special operator that can now only be used for checking references. A compiler error gets generated in case __ISVALIDREF is used with any other type than REFERENCE types. Interfaces and pointers can be checked via interf <> 0, pointer <> 0.</p>
SP9CDS-44576	<p>Compiler / Online Change: AT declarations If an address is moved from one variable to another variable, an online change will not be possible; a compiler error will be generated. Example: var1 : BYTE; -> var1 AT %MB0 : BYTE; var2 AT %MB0 : BYTE; var2 : BYTE;</p>
SP9CDS-45776	<p>Compiler: Array with length 0. For compiler versions of SoMachine Motion V4.4 or later, a compiler error will be generated for arrays like: arr[0..unsigned_const-1], if the unsigned_const is 0. The upper limit is evaluated as an unsigned operation and would result in a too large number for any signed array limit. Use a signed constant instead, or cast the constant to a signed type: arr[0..TO_INT(unsigned_const)-1]</p>
SP9CDS-45575	<p>Compiler: PRIVATE, PROTECTED not allowed for FB_Init, FB_Exit, FB_ReInit. For compiler versions of SoMachine Motion V4.4, a compiler error will be generated, if an FB_Init, FB_Exit or FB_ReInit method is declared as PRIVATE or PROTECTED.</p>

ID	Description
SP9CDS-45684	Compiler: Writing to %I* input variables. For compiler versions of SoMachine Motion V4.4, a compiler error will be generated, when writing to variables located at %I* addresses
SP9CDS-383	Compiler: FB_Exit is called to destroy local instances. For compiler versions of SoMachine Motion V4.4, FB_EXIT is now called for instances allocated on the stack before the owning scope returns. A warning informs you about the changed semantics in these cases. In order to suppress the warning, decorate the POU declaring the local instance with the warning disable macro for warning code C0394 (<code>{warning disable C0394}</code>).

NOTE: If you are extracting a project archive in EcoStruxure Machine Expert that has been created with SoMachine or SoMachine Motion, and **Options** are selected in the **Extract Project Archive** dialog box, your EcoStruxure Machine Expert installation may be altered and it may appear the devices are missing.

CAUTION

INOPERABLE EQUIPMENT

When you extract a project archive that has been created with a different programming software, deselect the **Options** check box in the **Extract Project Archive** dialog box.

Failure to follow these instructions can result in injury or equipment damage.

To restore your EcoStruxure Machine Expert installation, execute the **Tools → Options** command and select the **Directories (Devices, Libraries,...)** option. From the **Directories (Devices, Libraries,...)** dialog box, click the **Reset repository locations** button and the devices are restored.

NOTE:

- If a SoMachine or SoMachine Motion project with HMIs is loaded, it may occur that Vijeo-Designer must be started by the update. In this case, it may occur that Vijeo-Designer is only started in the background.
Vijeo-Designer must be opened manually to continue the update.
- If a SoMachine or SoMachine Motion project with obsolete HMIs is loaded, it may occur that Vijeo-Designer is started and you are prompted to enter a reference number.
If the reference number is not available, click **No** and the device is updated automatically to a preprogrammed type.
- If a SoMachine or SoMachine Motion project with obsolete HMIs (with control) is loaded, the HMI is converted in Vijeo-Designer to a supported HMI.

Compatibility EcoStruxure Machine Expert - Safety

Overview

Former SoSafe Programmable versions cannot be started from EcoStruxure Machine Expert environment anymore and can only be installed and used if the related SoMachine Motion version is installed.

However, the former SoSafe Programmable projects - starting from V2.1 - can be imported, re-used, and updated in EcoStruxure Machine Expert - Safety V1.1.

In almost all cases, the update works without impact on the overall safety application and the resulting project CRC (cyclic redundant checksum) value stays the same and there is no recertification needed.

However, EcoStruxure Machine Expert - Safety with this release does not support reusing a project built on EcoStruxure Machine Expert - Safety with LMCx01 system to EcoStruxure Machine Expert - Safety with M262 system or vice-versa.

Identified Incompatible Project Updates

The CRC of the safety project done before SoSafe Programmable V2.21 is changed if the old project contains the following safety devices:

- TM5SAI4AFS
- TM5STI4ATCFS

In this case, the safety project must be compiled again and downloaded to the TM5CSLCx00FS and the related safety function must be validated and recertified.

It is still possible to install former SoSafe Programmable versions in parallel to EcoStruxure Machine Expert - Safety as long the compatible SoMachine Motion package is available on the PC. Thus, you can maintain old projects using previous compatible engineering tool chains.

Overview of the validated safety-related software with the appropriate safety-related firmware.

Device	Safety-related firmware version for SoSafe Programmable version				
	1.0	2.0	2.1	2.2	2.21 ⁽¹⁾
TM5CSLC100FS	1.10	2.36	2.41	2.44	2.47
TM5CSLC200FS	1.10	2.36	2.41	2.44	2.47
TM5SAI4AFS	–	–	302	302	322
TM5SDC1FS	–	–	302	302	302
TM5SDI20DFS	–	–	301	305	305
TM5SDI2DFS	281	281	301	305	305
TM5SDI4DFS	281	281	301	305	305
TM5SDM4DTRFS	281	281	301	305	305
(1) EcoStruxure Machine Expert - Safety V1.1 is compatible with the same component versions as SoSafe Programmable V2.21.					

Device	Safety-related firmware version for SoSafe Programmable version				
	1.0	2.0	2.1	2.2	2.21 ⁽¹⁾
TM5SDM8TBFS	–	–	301	305	305
TM5SDO2DTRFS	–	–	300	300	300
TM5SDO2TAFS	280	280	280	280	280
TM5SDO2TFS	280	280	280	280	280
TM5SDO4TAFS	280	280	280	280	280
TM5SDO4TFS	280	280	280	280	280
TM5SDO6TBFS	–	295	295	295	295
TM5SPS10FS	–	–	320	320	320
TM5STI4ATCFS	–	–	–	–	322
TM7SDI8DFS	–	–	301	305	305
TM7SDM12DTFS	280	280	301	305	305
(1) EcoStruxure Machine Expert - Safety V1.1 is compatible with the same component versions as SoSafe Programmable V2.21.					

Mitigated Anomalies

Machine Expert Installer

ID	Description
OEM00073838	SoMachine Motion installation on a Windows system with Turkish language is operational.

Online Help

ID	Description
OEM00060935	Missing information on the safety-related characteristics of the Safe Logic Controller TM5CSLCx00FS and the TM5/TM7 I/O safety-related modules added in the Online Help.
OEM00067912	Missing information on the safety-related parameters in the configuration window of safety-related drives added in the Online Help.
OEM00069590	In the German Online Help, the links of the chapters <i>Lexium 62 Single/Double Drive Embedded Safety</i> and <i>Lexium 62 ILM Safety Option Module</i> are operational.
OEM00069710	In the Online Help, the link to the <i>PacDrive TM5/TM7 Safety System Planning and Installation Guide</i> is operational.
OEM00070505 OEM00070510	In the Online Help, the description of some LED indicators of the TM5CSLCx00FS is present. The following was enhanced: <ul style="list-style-type: none"> ● Missing module detected. ● Boot phase. ● Debug state (RUN, STOP, HALT).
OEM00070844	In the Online Help, the parameter information on the encoder resolution of motors (<i>EncoderResolutionRotary</i>) is present.
OEM00071262	In the Online Help, the description for the TM5CSLCx00FS cycle time parameter provides sufficient information.

EcoStruxure Machine Expert

ID	Description
OEM00055804	In simulation mode, you can assign the application to the same node name as the Soft PLC. The Vijeo-Designer Simulation Runtime on the same Windows PC will connect to the simulated PLC.
OEM00061672	The diagnostic message <code>Program name or function block instance expected instead of IoMgr...</code> no longer is displayed at the first login or after the Update → Build → Generate code procedure.

ID	Description
OEM00067034	When converting an M251 controller to an M241 controller, the modules of an Ethernet OTB slave are no longer arranged in reverse order.
OEM00067403	In online mode, the parameters for Modbus TCP slaves can no longer be edited or modified.
OEM00068030	It is now possible to install Sercos III EtherCAT bridge devices without losing parameters in the device description.
OEM00070178	McAfee security analysis no longer incorrectly declares the <i>Clean_all.exe</i> files as Trojans.
OEM00071130	In the Add Device dialog box, the iPC Series is now available.
OEM00071816	The <i>SiteManagerEmbedded.exe</i> file (used for Vijeo-Designer) is available in the <i>Tools</i> folder.
OEM00062595	Motion Sizer: In the Device selection dialog, the Inertia ratio column can be sorted.
OEM00006868	Smart Coding no longer displays incorrect icons for POU's or actions in the SFC (Sequential Function Chart) editor.
OEM00010333	GlobalImagePool: After embedding an image into a project, the image has become part of the project and the referenced file is no longer needed. The embedded image without referenced file is no longer displayed in red.
OEM00012125	Source Download: If you execute the Source Download command, your project is no longer automatically saved without first prompting you to confirm.
OEM00016215	Variable declaration: The declaration of variables in the tabular declaration editor no longer automatically adds an additional pair of keywords (VAR, END_VAR) to the textual declaration editor.
OEM00019426	For Visualization elements, user-defined colors are retained.
OEM00022360 OEM00033901	The size of project files no longer increase over time due to precompile and auxiliary files for shared strings.
OEM00025211	When there is no memory space available on the file system of the controller, the <code>Create boot application</code> command can not be executed successfully, but no message is displayed indicating the reason. Workaround: The message can be created by the function <code>CAL_SysFileWrite</code> with the return value <code>ERR_DISK_FULL</code> .
OEM00026350	Behavior of outputs for STOPPED state (from Addendum SoM V3.1): All outputs initially assume their configured state (Keep current values or Set all outputs to default). The subsequent state of the outputs depends on the value of the Update IO while in stop setting, or the state dictated by output forcing if used and on commands received from remote devices. NOTE: The initial assumption of state of the outputs is for the equivalent of one controller cycle. After this, the subsequent state takes effect. For detailed information, refer to the <i>Programming Guide</i> specific to your controller, chapter <i>Controller States Description</i> .

ID	Description
OEM00027910	Opening the preview of project documentation no longer leads to overflow of GDI (Graphics Device Interface) objects.
OEM00028990	When function <code>DirList</code> out of the CAA File library was used to read files and folders from the controller file system the first file/folder is no longer missing.
OEM00030446	When the Tools → Options dialog box was closed with the X button, the settings are no longer saved (as if the OK button was clicked).
OEM00030618	Variable declaration: The order of the variables copied from one GVL to another GVL is correct.
OEM00031906	CANopen, DTM: If the CANopen option Block SDO, DTM and NMT access while application is running is set, after the application is running and subsequently stopped, the DTM (Device Type Manager) can be synchronized.
OEM00035324	Case sensitive renaming a POU is possible.
OEM00035704	In online mode, you can no longer add a POU to the MAST task by drag-and-drop in the Device Editor .
OEM00035785	Library Manager → Add Library → Placeholder : Placeholders defined in the library profile (like for the Standard** library) are present in the placeholder list.
OEM00037183	Addressing bits in variables: Compiler error message is now generated indicating that bit access is only possible on integer variables.
OEM00038122	A cut-and-paste operation is now possible for a POU in an application if a device with the same name exists.
OEM00038656	When adding a POU to the MAST task by using the contextual menu, the entered comment is now taken into account.
OEM00038866	Creating an <code>ARRAY OF BOOL</code> located on a bit address, Build → Generate Code no longer generates an internal error message.
OEM00039266	Adding an FB (function block) to an LD (Ladder Diagram) no longer results in an undefined FB when clicking outside the FB edit dialog box instead of confirming the name with the Enter key.
OEM00041670	Downloading a project which included a visualization trace for which a <code>DWORD</code> variable was specified in the Load trace from a file → FileName property, no longer cause connection issues.
OEM00041917	If you used the 3S CanOpenStack library in your project, a build error is no longer generated when using a POU named <code>START</code> or <code>STOP</code> .
OEM00042160	If you disconnect an Ethernet cable from a device for a short time and reconnected it, is now recognized that the device was reconnected.
OEM00042331	The <code>%I</code> and <code>%Q</code> addresses of a project are organized during code generation. Less time is required to manage a large number of <code>%I/%Q</code> addresses existing in a project, when the option Always update variables is activated.
OEM00042591	The correct message is now displayed when trying to connect to a device with an incompatible firmware version.

ID	Description
OEM00042732	Symbol Configuration: The symbols from Symbol Configuration can now be exported to Vijeo-Designer after a second modification.
OEM00043711	When outputs have default values configured and are driven by an external task and the external task has not been executed at least once, the default values are now not applied when the controller mode changes from RUN to STOP.
OEM00043954	WebVisualization: The configured background color is now used for the complete website.
OEM00044255	In EcoStruxure Machine Expert Logic Builder under Project → Project Settings → Security → Enable project file encryption → Password , you are no longer prompted for the present password and the new password if the security settings have never been enabled. You are now asked only for the new password.
OEM00044349	WebVisualization: The controller no longer transitions to STOP mode when you open a tab of the WebVisualization.
OEM00044785	WebVisualization: Connecting to WebVisualization with a tablet or a smartphone now consistently returns the addressed page.
OEM00044844	CAA_File.library: The function <code>FILE.DirList</code> now provides information about the file size and date when <code>xDone=TRUE</code> and the directory is empty.
OEM00045192	Resolution of a DTM (Device Type Manager) communication issue now allows FDT (Field Device Tool) information to be saved.
OEM00045337	SysDir Library: <code>CreateFolderTransfer</code> now calls <code>CAL_SysDirClose</code> when the directory is invalid.
OEM00045442	The Symbol Configuration object can now be used/configured for a Turkish localization.
OEM00045474	Symbols created with the Symbol Configuration editor can now be shared with the Vijeo-Designer after upgrading the programming software.
OEM00045495	When you cancel the closing of a project, the message: <code>Could not save project. Object reference not set to an instance of an object.</code> is no longer presented and you can login to the controller.
OEM00045521	An unhandled exception no longer occurs during Project → Export when changing the message categories.
OEM00046210	Variables of large POUs in a CFC program can now be monitored online.
OEM00046215	If you attach two addresses to one contact/coil, a build error message is displayed.
OEM00046286	In the communication elements list of the Add Device dialog box, one version is now displayed for the Modbus devices.
OEM00046718	The message <code>Assertion Failed</code> is no longer displayed during the build process when you use a function of the Conveying library or the Conveying Templates library and afterwards remove the libraries from the project.
OEM00046780	A runtime system shutdown during operation no longer occurs when using a large number of network adapters.
OEM00046838	Toolbar and toolbox no longer disappear while using drag-and-drop of elements/operators in an undocked POU editor.

ID	Description
OEM00047072	Elements of an <code>ARRAY [x . .y] OF STRUCT</code> can now be read by Vijeo-Designer.
OEM00047248	In EcoStruxure Machine Expert Logic Builder under Tools → Options → International Settings , the option to select English as language appears now only once in the list.
OEM00047320	Online with an extensive WebVisualization: you can now run an additional stand-alone visualization in parallel.
OEM00047399	In the Tools tree and the Applications tree, the green (+) button is now visible when the width of the Tools tree or the Applications tree is small.
OEM00047586	In the GUI of the programming software, some French translations are no longer missing and French characters are now displayed correctly.
OEM00047786	If you now reduce the size of the Visualization Manager dialog box, buttons are displayed proportionally, and can now be read.
OEM00047962	If you now delete an operator or function block from the LD or FBD editor, and attempt to drag-and-drop another, different element, the correct element will appear as opposed to the element which was deleted.
OEM00048174	The Modbus channel dialog of the Modbus I/O scanner is now translated to Italian.
OEM00048226	The removing of the CANopen connection cable from an Altivar drive (ATV61/ATV71) is now detected.
OEM00048337	<code>SysSockGetRecvSizeUdp</code> now returns <code>ERR_FAILED</code> if a timeout occurs.
OEM00048341	In the Project → Project Settings dialog box, some Italian words were not translated.
OEM00048342	The Tools → Library Repository dialog is now translated to Italian.
OEM00048605	When clicking the Export groups for global visualization button in the Visualization Manager → User Management → Groups tab), the error message <code>Unhandled exception</code> is no longer displayed.
OEM00049190	In the GUI of the programming software, there is no longer some Chinese translations missing.
OEM00049405	By converting an XBTGC HMI Controller to an HMISCU Controller, the build error message <code>Out of code memory</code> is no longer displayed.
OEM00049576	The operating modes Circular and Stop when full for the log file of the data log manager now operate correctly. The entries are added at the correct position and the log file is not limited to a fixed size.
OEM00050567	When you add a Visualization to a project and perform an Undo and then a Redo , the navigators (Devices tree, Applications tree, ...) of the programming software now continue to operate correctly.
OEM00050997	DTM dialog message boxes now display the correct icons.
OEM00051067	Index variable values are now displayed correctly when the index variable is of type <code>UINT</code> .
OEM00051333	WebVisualization: When you modified the WebVisualization property Best Fit from Use specified client size to Best fit in online mode , this modification is now taken into account.

ID	Description
OEM00051955	Lexium 23 (LXM23) drive: It is no longer necessary to execute the <code>MC_Reset</code> function block twice to bring the status (PLCopen) from <code>ErrorStop</code> to <code>StandStill</code> when a limit switch (AI14, AI15) is released.
OEM00052042	WebVisualization: The displayed content is now more consistent depending on the browser or smartphone used.
OEM00052458	Performance has been improved when opening a project which includes a CANbus network.
OEM00052907	Now you can close the editor of drive DTMs which control and run a motor, or go offline before the motor is stopped.
OEM00053685	NVL (Network Variables List): During creation of an NVL receiver list, it is now possible to add NVL senders to NVL receiver lists.
OEM00053715	The FDT (Field Device Tool) frame application now verifies whether a DTM (Device Type Manager) is in state <code>Configured</code> before executing import/export and copy/paste operations.
OEM00053859	The time to perform the Build → Clean All command is now more consistent across projects.
OEM00053917	Unsupported libraries are no longer delivered in the Category: Test Versions .
OEM00053925	The time it takes to add a Logic Motion Controller (LMC078) to a project for the first time has been improved.
OEM00054730	Configuring the hotkeys in the VisualizationManager window now operates correctly.
OEM00055008	It is now possible to import a device to a connector which is configured with the attribute <code>explicit=true</code> .
OEM00055516	In a project which contains the Lexium 32i library and the Lexium 28 library, the structured view in the Input Assistant now displays the correct sorting of the function blocks.
OEM00055707	You can now attach several Groups to the same position in your visualization, select the groups, and move them to a new position without an error message being displayed.
OEM00057166	Using the Input Assistant in a visualization no longer causes a shutdown of the programming software.
OEM00057461	When a contact or a coil was added to an LD network and you attempt to attach a variable, the Input Assistant now proposes a BOOL instead of an INT.
OEM00057572	When using Project → Compare , a null reference exception message is no longer displayed and the compare feature operates.
OEM00057670	The attempt to edit the HMI Application object of a Vijeo-Designer device while the Cross Reference List is open no longer causes a shutdown of the programming software.
OEM00058078	If you select several function blocks in an FBD (Function Block Diagram) and delete them, all of them are now deleted.
OEM00058877	For a PGN (Parameter Group Number) inserted into a J1939_ECU device (CANbus), all the parameter values are now sent.

ID	Description
OEM00059249	The attempt to open Project → Project Information , no longer results in the errant display of the message: Object reference not set to an instance of an object.
OEM00059361	After importing an EDS file (device description), the Hardware Catalog is now updated and the added device is available.
OEM00059847	WebVisualization: When you modify the WebVisualization settings, the settings are now taken into account for download.
OEM00059965	After deleting the first TX Signal of a J1939_ECU device (CANbus), the I/O mapping of the associated PGN (Parameter Group Number) is now correct.
OEM00060184	SVN: Modifications on a CANopen node in the first instance of a project are recognized by SVN and are now also taken into account for the second instance of the project.
OEM00060617	After saving and reopening a project, the I/O Mapping tab of a J1939_ECU device now displays the Unit column for the TX/RX signals.
OEM00060712	SVN: The time stamps now displayed by SVN provide the local time of the computer running the programming software.
OEM00061003	Replacing an element in an LD network by drag-and-drop from the ToolBox now operates correctly.
OEM00061075	Devices can now be added, copied and pasted, and then deleted from a project without provoking an error message when you execute the Build command.
OEM00061639	SVN: Modifications on the first instance of a project are now taken into account by SVN for the second instance of the project.
OEM00062014	After executing the Convert Device command, a GVL (Global Variable List) is no longer missing in the project.
OEM00062211	Using Project → Export , the prompt to overwrite the already existing project now appears only once.
OEM00062593	Trying to log in to a controller no longer results in an internal error message displayed and the need to execute the Clean all command in order to log in.
OEM00063335	After disconnecting the CANbus connection of a J1939_ECU device, all devices in the Devices tree now display the appropriate color and the status of the J1939_ECU device is now displayed correctly.
OEM00063354	The status LEDs (CAN_R , CAN_E) of the J1939_ECU device are no longer turned off in all operating modes.
OEM00063414	SVN: Under Project Settings → Security → Enable project file encryption → Password , you can add a password to your project. After checking in the project to SVN and checking it out again, the password is now retained.
OEM00063623	SVN: After checking out a project from SVN, save the project and then reopen it again, objects are now highlighted or not as is appropriate.
OEM00063640	In a Ladder Diagram, inserting a function block into a parallel contact branch is now possible.
OEM00063811	SVN: After checking out a project from SVN, the time stamps are now synchronized with the working copy.

ID	Description
OEM00065365	Using the Input Assistant to attach a global variable out of the TcpUdpCommunication library to an application, the name space is now only added once (TCPUDP.GVL.G_stDefault).
OEM00065836	Unforce and Restore all Selected Values now affects %QX0.0 outputs.
OEM00065955	Performance was improved when mapping variables to bits using Modbus TCP slaves.
OEM00066218	In connected mode, the tooltip of a variable with mapping to %IX is now correct.
OEM00066295	Variable address mapping can now be deleted in the table view of the declaration section.
OEM00066930	IntelliSense now operates for actions.
OEM00067143	SVN: Performance improvement when calculating the SVN_Version_INFO.
OEM00067152	AS-i Sercos Gateway: During an update procedure, the configured non-safety-related submodules are no longer replaced by default modules.
OEM00067216	Clicking the Ignore button to the error message <code>Out of global data memory</code> no longer causes a shutdown of the programming software when logging in to a controller.
OEM00067283	After performing multiple online changes on a project with an HMISCU Controller, the connection to the controller is no longer interrupted.
OEM00067382	PLCopenXML import: Importing files (Sercos slaves) exported from projects created with earlier software versions is improved.
OEM00067384	PLCopenXML import: Importing files (controllers) exported from projects created with earlier software versions is improved.
OEM00067452	Whenever a Source Upload (after an upload and download of Users and Groups) is performed, a user logon is no longer displayed.
OEM00067621	VisualizationManager → User Management : After deleting a RemoteTargetVisualization or a WebVisualization , a build error message is no longer displayed when activating the user rights.
OEM00067743	An incorrect declaration of the initial value of an INT variable no longer causes a shutdown of the programming software.
OEM00067888	Using the Cut command in an FBD (Function Block Diagram) no longer causes a shutdown of the programming software.
OEM00067935	Modifications in the Recipe Manager are now managed correctly during Online Change .
OEM00068130	SVN: Each server polling no longer increases the number of available updates.
OEM00068211	SVN: Server polling now updates the locked-by-other-user icon.
OEM00068219	In an FBD (Function Block Diagram), it is now possible to search for a variable used in an Execute box.
OEM00068229	Symbol Configuration : Modifying the access rights of an object in the Symbol Configuration Editor no longer causes a shutdown of the programming software.
OEM00068383	SVN: Including external objects (<code>svn.include_external(URL)</code>) is now compatible with Python scripting.

ID	Description
OEM00068449	OPC DA (Open Platform Communications Data Access): The communication between OPC clients and the OPC server of controllers no longer stops after one of the OPC clients sends a request for one or more variables of a <Controller> PLCSystem library.
OEM00068458	Running a Trend Recording and starting and stopping the application no longer results in a watchdog exception.
OEM00068537	Symbol Configuration : The variable list of the Symbol Configuration Editor is now updated correctly.
OEM00068562	The Diff Viewer no longer displays misleading information on unmodified objects.
OEM00068649	In the Diff Viewer , it is now possible to accept the detected modifications with the related button. The new command Project → Commit accepted changes , was added. This command is also available as a button in the toolbar.
OEM00068767	Auto Declare no longer proposes a Type without namespace.
OEM00068847	Program simulation is now possible when a POU contains ARRAY variables and where a variable and an arithmetic operator are used for addressing the ARRAY (Example: <code>slider[sli_index+1]:=55</code>).
OEM00068853	Python Scripting: Setting a new value via <code>IScriptDriverInfo.always_update_variables</code> now operates correctly.
OEM00068954	PLCopenXML import: Some objects, such as <code>SoftMotion General Axis Pool</code> , can now be imported.
OEM00068970	PLCopenXML import: Some objects, such as <code>PowerDistribution</code> , <code>DM72F0</code> , <code>DM72F1</code> , and <code>TM5_Manager</code> , can now be imported.
OEM00069258	SVN: A CANbus device is no longer erroneously highlighted as modified.
OEM00069291	SVN: Each instance of the application now independently updates the parameter values without first being closed.
OEM00069359	In an LD (Ladder Diagram), inserting a function block into a contact branch no longer causes an incorrect diagram.
OEM00069424	It no longer takes long time to close a project while View → Hardware Catalog → Devices & Modules was open.
OEM00069603	Updating the programming software to the latest version: During update, implicit tasks (related to modules) are no longer added to the application when they are already available in the application.
OEM00069634	PLCopenXML import: All importable objects can now be imported.
OEM00069976	Tables in Visualization objects have been made more stable.
OEM00070615	When sending a UDP packet of size 0 to destination port 1740, the communication with the controller is no longer stopped.
OEM00071356	PLCopenXML import: After an import and an export, an output of <code>SR_Main</code> is no longer missing.
OEM00071386	Cross References (locations where variables are used within a project) now operates without generating spurious error messages.

ID	Description
OEM00071389	Using Auto declare for commands in an FBD network no longer cause an unhandled exception.
OEM00071445	PROFINET I/Os are now updated when the application program is stopped.
OEM00071842	Dynamically created recipes are now loaded during download.
OEM00071886	It is now possible to edit parameter lists of libraries in the Library Manager of the POUs tree.
OEM00072172	If an edge detection is used at an output of an object in FBD, this edge detection is now retained after PLCopenXML export and PLCopenXML import of the POJ.
OEM00072392	Using Auto declare for an Execute box in an FBD network no longer causes an unhandled exception.
OEM00072417	Using Refactoring → Rename (project-wide renaming of object names and variable names) no longer results in the message: Index was outside the bounds of the array.
OEM00072810	If you select a visualization style that differs from the default, the programming software no longer requests an online change at login after the programming software has been closed and reopened.
OEM00073327	Copy-and-paste of variables in the trace configuration, no longer causes an unhandled exception.
OEM00073465	SVN: The time it takes to update a function block to the latest revision of SVN has been improved.
OEM00073690	The default resolution of the following placeholders is now correct: SysSocket2, CmpTls, CmpX509Cert.
OEM00074493	As the compile process consumes a large amount of memory size, a download or online change is now performed after the compile process has been finished.
OEM00074646	A Clean all operation led to a peak in memory usage and kept the automatic memory management from collecting garbage memory.
OEM00074872	Access to the filesystem no longer negatively influences the real-time behavior of the system.
OEM00075100	Comparing different versions of a project is now improved.
OEM00075449	PLCopenXML import: After a PLCopenXML export and subsequent import, an additional output (Out1) is no longer added to an action.
OEM00075456	PLCopenXML import: If a function (FC) with assignment but without variable is exported, the assignment is no longer lost after import.
OEM00075518	Go To Definition command: The command now operates correctly for enumerations in the online view.
OEM00075789	Selecting a variable in the Trace Configuration dialog no longer "freezes" the application.
OEM00075950	Python Scripting: ScriptDriverInfo.driver_info now operates correctly for fieldbus devices.
OEM00069264	SVN: Reverting project modifications on a controller now operates correctly.

ID	Description
OEM00075591	Opening a SoMachine Motion V4.41 project with EcoStruxure Machine Expert, the correct visualization profile is used now.
OEM00070437	Trying to export the SafeLogger messages to a storage device (for example, an USB device) that does not provide enough memory space, no longer causes a shutdown of the programming software.
OEM00070681	In the Dependency View of the Code Analysis Manager , the German translation is corrected for specific objects.
OEM00071201	The French and German localization of the User Management dialog (Visualization Manager) has been adapted to the English version.
OEM00072358	The Vijeo-Designer no longer shuts down with HMI Connection Mode → IP Address (Fast TCP) .
OEM00072397	The Controller Assistant now loads the firmware of drives. Thus, FDR (Fast Device Replacement) may now operate for drives.
OEM00073151	SVN: There is now an option to revert a complete project to a specific revision.
OEM00073371	Firmware update with the Controller Assistant: The Sercos device firmware version dialog was improved. Now the Sercos files from the selected firmware version are used.
OEM00073417	The programming software no longer shuts down after opening and closing a project several times.
OEM00075268	An unhandled exception is no longer caused by copying and pasting a variable inside the trace configuration.
OEM00075412	Graphics added to the WebVisualization in the programming software are now displayed in the web browser.
OEM00075624	CheckLRangeSigned and CheckLRangeUnsigned (CheckLibs = POU for implicit checks) now trigger a reaction on PacDrive controller.
OEM00074309	If you modify the Logic Motion Controller settings or the fieldbus device settings, the fieldbus now continues to operate after a program download.
OEM00075265	The CanL2 communication now operates even after performing several project downloads.
OEM00070192	NetManager Server service no longer causes communication traffic issues. The automatic refresh behavior was modified.
OEM00076105	Using the Project → Convert Device command to convert the Magelis GTUX HMIG3X device to an HMIG2U device, the screen resolution is now adapted correctly.
OEM00074658	DTM - TM5/TM7: Using an *.eds file for a TM5/TM7 island without activating the Create all SDOs check box no longer results in an incorrect I/O mapping.

EcoStruxure Machine Expert - Safety

ID	Description
OEM00063913	Applications with an LMC Pro2 controller and many safety-related devices no longer have safety-related axes reporting incorrect reference values which lead to Sercos issues and system shutdown.
OEM00070603	Phase-up of Sercos with the largest possible safety-related application and a specific device sequence is now possible.
OEM00068174	STO (Safe Torque Off) is stabilized and a communication error is no longer detected.
OEM00069176	A web-based installation of the EcoStruxure Machine Expert - Safety is now available.
OEM00071263	In the Online Help, the description for the TM5CSLCX00FS cycle time has been enhanced and more detailed information is provided.
OEM00072267	In the SafeLogger, a safety-related message is not displayed if the TM5CSLCx00FS is not in operational state due to an incorrect encoder resolution.

Known Operational Anomalies

Limitations for the Release of TM262M**

- Disabling of Safety slices is not supported.
- There are restrictions on the simulation feature of devices in some use cases for machine options.
- The Safety Logic Controller will switch to SafeOS state SAFERUN in case Sercos state NRT is active. This is normal behavior and is used to debug the Safety Logic Controller application in case no TM262M is connected.
- Validation of file name is not performed when a new application file is saved in the local directory: If a file with the same name is in a folder and the user confirms to save in dialog, then the existing file is overwritten without further notification to the user.

Limitations for the Release of TM262**

The minimum required firmware version is 5.0.2.1. If the product has an earlier firmware version, firmware update is mandatory. Update can be executed via SD-card or the Controller Assistant.

Limitations for the Release of PacDrive Controllers

Validation of file name is not performed when a new application file is saved in the local directory. If a file with the same name is in a folder and the user confirms to save in the dialog, then the existing file is overwritten without further notification to the user.

Immediate Addressing

EcoStruxure Machine Expert allows you to program instructions using either a direct or indirect method of parameter usage. The direct method is called Immediate Addressing where you use direct address of a parameter, such as %IWx or %QWx for example. The indirect method is called Symbolic Addressing where you first define symbols for these same parameters, and then use the symbols in association with your program instructions.

Both methods are valid and acceptable, but Symbolic Addressing offers distinct advantages, especially if you later make modifications to your configuration. When you configure I/O and other devices for your application, EcoStruxure Machine Expert automatically allocates and assigns the immediate addresses. Afterward, if you add or delete I/O or other devices from your configuration, EcoStruxure Machine Expert will account for any changes to the configuration by reallocating and reassigning the immediate addresses. This necessarily will change the assignments from what they had once been from the point of the change(s) in the configuration.

If you have already created all or part of your program using immediate addresses, you will need to account for this change in any program instructions, function blocks, etc., by modifying all the immediate addresses that have been reassigned. However, if you use symbols in place of immediate addresses in your program, this action is unnecessary. Symbols are automatically updated with their new immediate address associations provided that they are attached to the address in the I/O Mapping dialog of the corresponding Device Editor, and not simply an 'AT' declaration in the program itself.

WARNING

UNINTENDED EQUIPMENT OPERATION

Inspect and modify as necessary any immediate I/O addresses used in the application after modifying the configuration.

Failure to follow these instructions can result in death, serious injury, or equipment damage.

NOTE: Systematically use symbols while programming to help avoid extensive program modifications and limit the possibility of programming anomalies once a program configuration has been modified by adding or deleting I/O or other devices.

EcoStruxure Machine Expert

ID	Description
OEM00064709	Motion Builder: The torque/speed curve of the SH205/30360 with an external fan is calculated incorrectly.
OEM00067341	Motion Sizer: The performance of the Motion Sizer with large projects is slow while entering axis names and descriptions (slow refreshing).
OEM00072759	Motion Sizer: It is not possible to add Lexium 62 ILM drives of different sizes to the same connection module. The rounding operation for the cycle time does not provide suitable values.
OEM00069953	To display different comments for libraries you can enter the key <code>LibDocContent</code> . Using <code>LibDocContent</code> with <code>DocsOnly</code> or <code>CommentsAndDocs</code> , the same results are displayed.
OEM00073945	Accessing a variable name of the TM5 module I/O mapping is not possible with Python scripting using an ARRAY.
OEM00075351	You log in to a project (FBD code) and put the focus on a network (which is not the last one) in an action/program. If you log out and log in again, the focus will be on the last network in the action/program. The same behavior is shown up, if you switch between two actions.
OEM00075726	A Cam switch task sporadically triggers the diagnostic message <code>8317 Program cycle time overrun</code> , although the Cam switch task is configured with a higher prior than the RTP (Real Time Process) cycle.
OEM00063214	TCP socket communication is delayed sporadically when the programming software is connected to the controller.
OEM00075185	When you attempt to upload a Harmony ZBRN1 DTM running under Modbus TCP IO Scanner , EcoStruxure Machine Expert is no longer operational (APPCRASH).
OEM00077196	Vijeo-Designer: The communication between an M262 controller and the Vijeo-Designer HMI is interrupted after several days. Workaround: Power cycle the HMI. The communication is re-established.

ID	Description
SI-3439	While converting a device during Update Project , you may be asked to delete internal data of persistent variable lists. Depending on the number of devices to be converted, this question may occur several times. Confirming it will avoid asking again for devices of the same controller.
SI-3971	When you convert a controller, for example, an M262L20 to an M262M35, the module configuration of the TM5/TM7 interface is not converted and is no longer available after conversion.
SI-3727	For ATV-DTM with activated control panel, the Disconnect command does not have any effect when the motor accelerates (ACC), turns constantly (RUN) or decelerates (DEC). To stop the motor, press the Stop button. Nevertheless, the control panel is not updated and still displays the state that was active before. You can execute the Online → Logout command, but this may have the effect that EcoStruxure Machine Expert is being closed.
–	Context sensitive help (F1) is not available for POU's declared with namespace.
–	If you are using a Virtual Machine (VM) you must deactivate the option Accelerate 3D graphics in the VM settings before downloading the online help.
SI-4244	ATV340: The DTM is not available.

EcoStruxure Machine Expert - Safety

ID	Description
OEM00060343	In the SafeLogger you can read that the status of an input/output of a safety-related module has changed. Detailed information on the reason can be decoded out of the additional <code>info0</code> and <code>info1</code> information. (Refer to the SafeLogger User Guide).
OEM00060774	The communication state between the Safe Logic Controller TM5CSLCx00FS and a drive is not indicated by a message in the SafeLogger: Under certain conditions, a drive is treated as a non-working drive but this is not recognized by the SafeLogger or by the drive. You have to restart the Safe Logic Controller TM5CSLCx00FS to recover.
OEM00067842	The configuration of an additional Sercos IDNs (identification number) is not working for safety-related drives in case the SLC (Safety Logic Controller) is not assigned to the last topological address.
OEM00068735	If you set the <code>MaxDataTransportTime</code> and <code>CommunicationWatchdog</code> parameters to significantly greater values than proposed by the calculator (for example, 6500 ms), this can result in an unstable system because these parameters influence the timeouts and restart timing of the safety-related system. In this case, the <code>ModuleOK</code> status for some safety-related modules is not reached or is unstable. Use the values calculated by the Response Time Calculator . Do not increase the parameters by more than factor two.
OEM00068980	If you set the value for <code>MinDataTransportTime</code> to a value less than the value calculated by the Response Time Calculator , a build error message may be displayed. The <code>MinDataTransportTime</code> must be set to the calculated value.

ID	Description
OEM00069079	<p>System limitation on number of drives with 1 ms Sercos time setting: With TM5CSLCx00FS firmware version 2.47 and earlier, up to 22 safety-related drives can be handled with 1 ms Sercos time setting.</p> <p>The maximum number of slaves depends on different factors:</p> <ul style="list-style-type: none"> ● The number of physical connected devices. ● The configured additional real-time parameters. ● The data exchanged between LMC and TM5CSLCx00FS. ● The number of additional safety-related devices (I/O modules, safety-related gateways...). <p>Workaround: When the error message <code>C1D 0x010A</code> is displayed, the system limit is reached. In this case, the system must be optimized on the influencing factors. Another possibility to increase the number of supported safety-related drives is to split the machine into several modules, with each one having a TM5CSLCx00FS and an LMC inside.</p>
OEM00069082	<p>TM5CSLCx00FS displays the internal error message <code>BF86</code>: This occurs when <code>SafeModuleOK</code> parameter is not used in all safety-related modules in the system.</p> <p>Workaround: Use the <code>SafeModuleOK</code> parameter in all safety-related modules.</p>
OEM00070294	<p>The channel of a safety-related module goes to FALSE if an unsuitable cycle time value is configured: The <code>CycleTime</code> value must be greater than the processing time for the safety-related application. If the <code>CycleTime</code> parameter value is less than or too close to the processing time, a cycle time violation may occur.</p> <p>The cycle time configured for TM5CSLCx00FS must be an integer multiple of the Sercos cycle time.</p> <p>You must configure an appropriate TM5CSLCx00FS cycle time:</p> <ul style="list-style-type: none"> ● Set a greater cycle time value for the TM5CSLCx00FS. ● Download and run the safety-related application. ● Open the SafePLC control dialog and click the info button: The present processing time is displayed. ● Set the TM5CSLCx00FS cycle time to a value \geq processing time + 1 ms.
OEM00070390	<p>No information could be found for the SafeLogger entry <code>0x9406</code>. This entry indicates a cross communication issue in the network processing engine.</p>
OEM00070466	<p>When the <code>MaxDataTransportTime</code> value is set to a value that is too small, the TM5CSLCx00FS does not change its status to RUN.</p> <p>Workaround: Use the value from the Response Time Calculator. If this value does not work, increase the <code>MaxDataTransportTime/CommunicationWatchdog</code> in small steps up to a maximum of two times the calculated value.</p>
OEM00070475	<p>TM5CSLCx00FS does not change its status to RUN and stays in <code>PreOp</code> mode. Possible reasons:</p> <ul style="list-style-type: none"> ● For one or more drives, the safety-related parameters are not valid. ● <code>OutputActiveSet</code> value is missing. ● <code>AutoRun</code> is not activated. ● Safety response time relevant parameters are not set to appropriate values.

ID	Description
OEM00070493	Sporadically, safety-related modules do not go to operational state: After the restart of an LMC (Logic Motion Controller), the TM5CSLCx00FS goes to operational state but the safety-related modules stay in pre-operational state. Workaround: Restart the entire system.
OEM00071897	In the SafeLogger, some issues are displayed as non-safety-related messages, whereas they should be safety-related messages. Known issues: <ul style="list-style-type: none"> ● 0x9414 Cross communication error ● 0x960B Internal error cross communication ● 0xD126 Execution differences processes ● 0x8609 Supply voltage error Use the latest firmware versions for the safety-related components in your system.
OEM00077282	In one special tested system configuration, running with 1 ms Sercos cycle time the state of <code>SafeModulOK</code> parameter of one safety-related module changes from TRUE to FALSE. This does not occur with 2 ms and 4 ms as Sercos cycle time in the same configuration. Workaround: Use 2 ms or 4 ms as Sercos cycle time if applicable for your application or slightly adjust the safety-related timing parameters (for example <code>maxDataTransportTime</code>).
OEM00052480	Support of special characters (German umlauts) in variable names in ST: An error is detected if a special character is entered as part of the naming of a variable in EcoStruxure Machine Expert - Safety. It is not possible to ignore or cancel this exception. The program must be terminated by the windows task manager. After restarting EcoStruxure Machine Expert - Safety, the special character can be deleted. Workaround: Do not use special characters in variable names.
OEM00073379	TM5CSLCx00FS stays in boot state after MXCHG confirmation for drives: TM5CSLCx00FS indicates MXCHG after the drive has been replaced. To confirm drive replacement, MXCHG ask for confirmation twice. After the second MXCHG confirmation, TM5CSLCx00FS reboot its-self and stays in bootphase (FIL leds light) until it is physically restarted. Workaround: Switch off and on the control voltage.
OEM00070117	Number of possible safety-related axes varies between ring and line topology.
OEM00077251	TM5 modules switch <code>SafeChannelOK</code> state to FALSE during Sercos ring break.

Documentation - Mitigated Anomalies

Documentation

ID	Description
OEM00061702	In the German Online Help, the section headers of some TM5/TM7 safety-related modules are now translated.
OEM00061925	Some information on using SELV/PELV for TM5 safety-related modules is no longer missing in the Online Help.
OEM00062559	In the Online Help, the SVN icons are now documented.
OEM00063454	In the Online Help, the description for <code>ErrorState_2</code> and <code>ModuleOK</code> of the TM5SDM8DTS module is no longer missing.
OEM00065214	Multiple download: An information was added to the Online Help to deselect the Start all applications after download option to help prevent the targeted controllers from restarting in the <code>RUNNING</code> state.
OEM00072124	Hanging and Pulling Loads (<i>Lexium 52 drive - Product manual</i>): A misleading reference to Lexium 62 variants E/F was removed.

Documentation - Known Operational Anomalies

Documentation

ID	Description
OEM00032469	Detailed information required for WD (watchdog) of the logic motion controller LMC •01. Documentation needs to be enhanced.
OEM00045026	Some dimension values provided by the hardware guides and the CAD files on the Schneider Electric homepage are slightly different for LXM 52 drives, LXM 62 drives and LMC Eco Motion Controllers. Documentation needs to be enhanced.
OEM00058892	In the Online Help, the chapter <i>TM5 / TM7 System - Load Breaking (TM5/TM7 System Planning and Installation Guide)</i> needs to be enhanced.
OEM00071212	The Online Help for the TM5SEAISG module (<i>Modicon TM5, Expansion Modules Configuration, Programming Guide</i>) provided incorrect ranges for the analog input register.
OEM00076210	The information on the TM5SPS1 power supply module needs to be enhanced in the Online Help.
OEM00077834	Lexium 62 Plus: The encoder output frequency is limited to 1 MHz, interpolation factor is set to 16 increment cycles per Sinus/Cosinus period of the analog encoder.
—	<p>PLCopen MC part 1: The following text and warning need to be added to the library documentation.</p> <p>If the position value of the master leaves the defined cam position range, the cam signals that the end of the cam profile has been reached. This implies that a buffered job is activated, regardless of whether the master has left the cam position range in a positive or a negative direction. The master can also leave the cam position range as a result of jitter if the master is at a standstill at a position sufficiently close to the positive or negative limit of the cam position range.</p> <p>See important safety information at the end of this table.</p>
—	<p>PLCopen MC part 1: A hazard message needs to be added to the library documentation.</p> <p>See important safety information at the end of this table.</p>

WARNING

UNINTENDED EQUIPMENT OPERATION

Implement all measures required to ensure that a job is only buffered if a sufficient distance from the position value to the end of the cam position range can be respected.

Failure to follow these instructions can result in death, serious injury, or equipment damage.

 **WARNING**

UNINTENDED EQUIPMENT OPERATION

Implement a filter for the master velocity and acceleration if you have an axis that follows a feedback axis master.

Failure to follow these instructions can result in death, serious injury, or equipment damage.