

CONTROL EXPERT_V140_HF_PMEPXM0100

README

Description of issue or behavior (before installation of ControlExpert_V140_HF_PMEPXM0100)

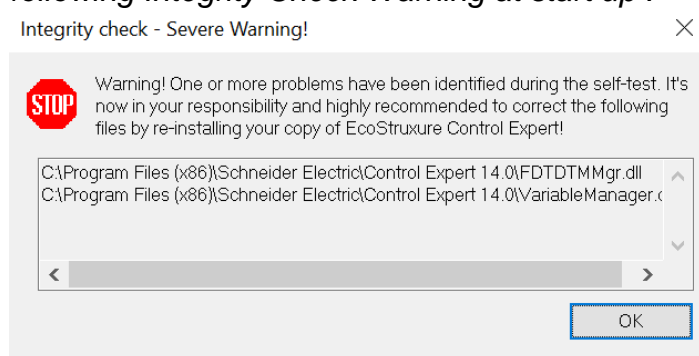
PMEPXM0100 cannot be used and configured

New behavior after installation of ControlExpert_V140_HF_PMEPXM0100

PMEPXM0100 can be used and configured

Important Notice:

If ControlExpert_V140_HF1 is installed after ControlExpert_V140_HF_PMEPXM0100, then Control Expert will report following Integrity Check Warning at start up :



Warning can be ignored (click OK), and Control Expert will start correctly.

If ControlExpert_V140_HF_PMEPXM0100 is installed after ControlExpert_V140_HF1 then, when editing an ATV9xx or ATV6xx DTM, and clicking on Help Button, Control Expert will stop working.

A new Hot Fix : ControlExpert_V140_PMEPXM0100_HF0312169E will be distributed soon to fix this issue

Compatibility

No compatibility break.

- Project done **before** ControlExpert_V140_HF_PMEPXM0100 installation can be open and built (stu, sta or zef) **after** ControlExpert_V140_HF_PMEPXM0100 installation.

- Project using PME PXM0100 module, done **after** ControlExpert_V140_HF_PMEPXM0100 installation cannot be open and built (stu, sta or zef) with Control Expert if ControlExpert_V140_HF_PMEPXM0100 is **not** installed

Installation procedure

- Download attached file on your computer.
- Prior to installation make sure Control Expert is closed.
- Run ControlExpert_V140_HF_PMEPXM0100 to install the update

ControlExpert_V140_HF_PMEPXM0100 can be installed over Control Expert V14

Other updates to install prior to installation of ControlExpert_V140_HF_PMEPXM0100

none

How to know which hot fix or updates are already installed?

Open Control Expert, click on “Help”, “about Control Expert” and “Technical Information”:
The list of installed hot fixes is displayed.

Important Notice: TÜV certificate

*This Hot Fix must **not** be installed on EcoStruxure Control Expert to generate **Safety projects**, as TÜV certification status is **not** valid for this Hot Fix.*

To check TÜV certification status, go to : <https://www.tuvasi.com/>

*Select « **Certification Database** »*

*Search for **SCHNEIDER ELECTRIC certificate 01/205/5610/00/17***

(Safety-related Programmable Electronic System - M580 Functional Safety Controller System)

*Select “**View Details**”*

*Open revision list in **Appendixes**.*