



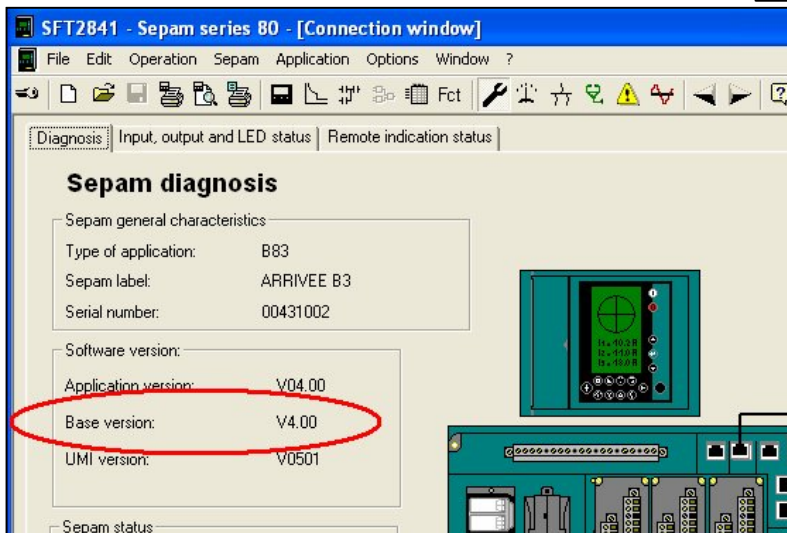
## POWER - Power Monitoring and Control

### How to check the Sepam firmware version Sepam series 80

- From the Sepam front panel : press the Sepam parameters setting keys until the screen “About Sepam” appears on the screen of the Sepam.



- From the SFT2841 :  
in “Sepam diagnosis” window of the SFT2841, in  
“Sepam general characteristics”, the firmware version is displayed.



For ant further information please contact the PMC Global Technical Support :  
[Global-PMC-Tech-Support@Americas](mailto:Global-PMC-Tech-Support@Americas)