



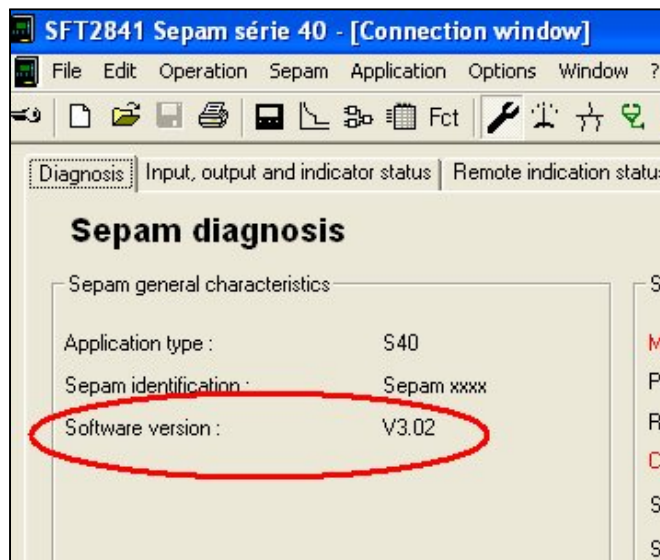
POWER - Power Monitoring and Control

How to check the Sepam firmware version
Sepam series 20 - Sepam series 40

- From the Sepam front panel : press the Sepam parameters setting keys until the screen “About Sepam” appears on the screen of the Sepam.



- From the SFT2841 when the Sepam setting software is connected to Sepam : in “Sepam diagnosis” window of the SFT2841, in “Sepam general characteristics”, the firmware version is displayed.



For ant further information please contact the PMC Global Technical Support :
Global-PMC-Tech-Support@Americas