

SoMachine V4.3 Patch1.1

Release Notes



Software Version:	4.3.0.1
Development Stage:	Final
Build:	17.12.06.01
Release Date:	6. December 2017

This document contains important information about the SoMachine software.
Read the complete document before you run the product.

The information provided in this documentation contains general descriptions and/or technical characteristics of the performance of the products contained herein. This documentation is not intended as a substitute for and is not to be used for determining suitability or reliability of these products for specific user applications. It is the duty of any such user or integrator to perform the appropriate and complete risk analysis, evaluation and testing of the products with respect to the relevant specific application or use thereof. Neither Schneider Electric nor any of its affiliates or subsidiaries shall be responsible or liable for misuse of the information contained herein. If you have any suggestions for improvements or amendments or have found errors in this publication, please notify us.

You agree not to reproduce, other than for your own personal, noncommercial use, all or part of this document on any medium whatsoever without permission of Schneider Electric, given in writing. You also agree not to establish any hypertext links to this document or its content. Schneider Electric does not grant any right or license for the personal and noncommercial use of the document or its content, except for a non-exclusive license to consult it on an "as is" basis, at your own risk. All other rights are reserved.

All pertinent state, regional, and local safety regulations must be observed when installing and using this product. For reasons of safety and to help ensure compliance with documented system data, only the manufacturer should perform repairs to components.

When devices are used for applications with technical safety requirements, the relevant instructions must be followed.

Failure to use Schneider Electric software or approved software with our hardware products may result in injury, harm, or improper operating results.

Failure to observe this information can result in injury or equipment damage.

© 2017 Schneider Electric. All Rights Reserved.

Table of contents

1.	SYSTEM REQUIREMENTS.....	1
1.1.	PC Software Requirement	1
2.	IMPORTANT INFORMATION.....	2
2.1.	Installation.....	2
2.2.	Improvements	2
2.3.	Limitations and Restrictions.....	3
2.4.	List of integrated components.....	4

1. SYSTEM REQUIREMENTS

1.1.1. PC Software Requirement

This Patch is dedicated to, and must be installed in conjunction with, SoMachine V4.3 only.

2. IMPORTANT INFORMATION

2.1.1. Installation

The Patch 1.1 is delivered as a container file in SECO format and can only be installed after installing SoMachine V4.3.

Use the SoMachine Configuration Manager (SCM) to install this Patch.

In Windows Explorer, double-click the SECO file delivered through this Patch, which will start SCM and the installation.

Alternatively, you can start SCM manually, change to the tab "Add-Ons/Patches" and choose "From File >" to open the delivered SECO file.

The installation of the Patch 1.1 requires administrator privileges to start.

Note: Patch 1.1 can also be installed on top of SoMachine V4.3 Patch 1.

2.1.2. Considerations

This patch contains new firmware for the Modicon M241/M251. Therefore, you should update the firmware of these controllers when using SoMachine V4.3.

2.1.3. Improvements

File Format Utility library

The function block `FB_ReadCsv` supports different character codes for line breaks in the same file. Whenever the logic detects the character codes `CRLF`, `LF`, or `CR` this is interpreted as a line break.

The function block `FB_ReadCsv` in `ReadMode OneRow` reads also the row if the row number to read is greater than the maximum number of rows in `TableReadValues`.

GMC libraries

- `ILx2` (Ethernet IP) drives: implemented enhancement to relieve the limit switches with the function blocks `MC_Home`, `MC_Jog`, `Home_ILX` and `Jog_ILX`.

Quality improvements:

- Avoids exception during modification of a Modbus TCP Channel. Keep existing variables associated to Modbus TCP channel after modification of the channel's settings or when adding new channels.
- Avoids exception, and correction of the behavior, of the EtherNet/IP connections editor while using a dedicated imported Ethernet/IP EDS file.
- Allows to open Release Notes of SoMachine V4.3 from Central's Help Center.
- Avoids exception during Central's startup due to negative window height.
- Allows one-step conversion of controller M258 to LMC078.

- Avoids "Hidden POU" compiler error during build of a project created with SoMachine V3.1 and opened in SoMachine V4.3 *without* update.
- Makes Ethernet/IP device editor more robust by allowing also EDS files containing hex -coded default values.
- Keeps TM5 module addresses after updating a project from SoMachine V4.1 SP2, even while adding afterwards new TM5 modules.
- Avoids warning during usage of library "Ethernet IP Remote Adapter" on a LMC078 controller.
- Avoids Mast task exception when using TM4PDPS1 (Profibus)
- Avoids loss of file system with application using Webserver. Fixes a nonconformity when using WebVisu.

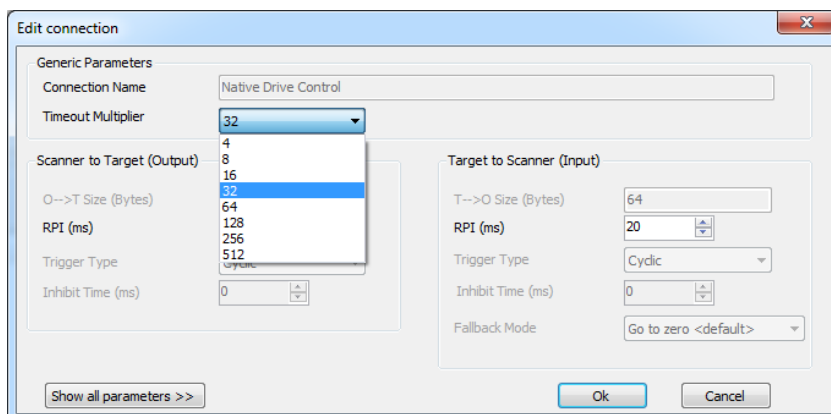
Improvement of the stability and quality of the OPC UA Server on Modicon M241/M251.

2.1.4. Improvements of Patch 1.1 compared to SoMachine V4.3 Patch 1

Compared to SoMachine V4.3 **Patch 1**, the **Patch 1.1** includes a fix of the FTP server on the Modicon M241/M251 Firmware. With Patch 1.1, FTP downloads of files exceeding 256 Ko will be successful under normal circumstances.

2.1.5. Limitations

In some cases, EtherNet/IP connection between Controllers Modicon M241/ M251 and drive restarts automatically and the drive communication error cannot be reset.
A workaround is to increase the timeout multiplier (see following picture).



2.1.6. List of integrated components

Component	Version
Central	4.3.0.1 (17.11.2.1)
CoreRepository	4.3.0.1 (17.10.11.9)
File Format Utility	4.3.0.0 (17.10.10.838)
LMC058	4.3.9.8 (17.8.22.1)
LogicBuilder	4.3.0.1 (17.10.12.2)
M241	4.3.9.11 (17.12.04.01)
M251	4.3.9.11 (17.12.04.01)
M258	4.3.9.8 (17.8.22.1)