

# SoMachine V3.0 Patch 2 ATV-IMC G-Type

## Release Notes



**Release Date: October 2011**

**This document contains important information about the SoMachine software update. Please read the complete document before you run the update.**

This documentation is not intended as a substitute for and is not to be used for determining suitability or reliability of these products for specific user applications. It is the duty of any such user or integrator to perform the appropriate and complete risk analysis, evaluation and testing of the products with respect to the relevant specific application or use thereof. Neither Schneider Electric nor any of its affiliates or subsidiaries shall be responsible or liable for misuse of the information contained herein. All pertinent state, regional, and local safety regulations must be observed when installing and using this product. When devices are used for applications with technical safety requirements, the relevant instructions must be followed. Failure to use Schneider Electric software or approved software with our hardware products may result in injury, harm, or improper operating results. Failure to observe this information can result in injury or equipment damage. If you have any suggestions for improvements or amendments or have found errors in this publication, please notify us. No part of this document may be reproduced in any form or by any means, electronic or mechanical, including photocopying, without express written permission of Schneider Electric.

© 2011 Schneider Electric. All rights reserved.

**August 2011**

## Table of contents

|                               |   |
|-------------------------------|---|
| GENERAL .....                 | 3 |
| COMPATIBILITY .....           | 3 |
| CONTENT OF THIS PACKAGE ..... | 3 |
| INSTALLATION .....            | 4 |
| EVOLUTION / ENHANCEMENT.....  | 6 |

## General

This patch introduces the ATV-IMC G-type controller to the SoMachine V3.0 in addition to the S-type, which is provided with SoMachine Solution Extension. The G-type is identical to the S type, however they do not support the AFBs or TVDAs. The solution extension DVD of SoMachine is therefore not needed to handle the ATV-IMC G-Type.

## Compatibility

This update package is compatible with **SoMachine V3.0 (3.0.14.5)** only. It requires the installation of SoMachine V3.0 Software. The installation of the SoMachine Solution Package is not required.

## Content of this package

The update package contains the following components

- (1) ATV-IMC G-Type device description and the four related libraries
  - ATV-IMC Device description V3.3.1.7
  - CmpHSC library V3.4.1.0
  - CmpPlc library V3.4.1.0
  - CmpSysLibV23 library V3.4.1.1
  - UsrLibControllerInside library V3.4.1.1
- (2) ATV-IMC Firmware V1.1.1.11 (1.1ie21)  
This firmware is the same for ATV IMC G-Type and ATV IMC S-Type
- (3) Two updated files for the Online Help available in six different languages (Chinese, English, French, German, Italian, Spanish).
  - ATV IMC Drive Controller - Programming Guide
  - ATV IMC Drive Controller - Hardware Guide
- (4) This hereby release note is in all the six languages available:
  - Chinese
  - English
  - French
  - German
  - Italian
  - Spanish

All these components are included in one single installation package called **SoMaV3.0Patch2 ATV-IMC G-Type.exe**.

## Installation

To install the software update on your computer follow the given instructions:

- (1) Close any SoMachine instances running on your PC before you start the update.
- (2) Copy the **SoMaV3.0Patch2 ATV-IMC G-Type.exe** file to a temporary location on your target system.
- (3) Run the exe-file to start the installation.
- (4) The installation routine does not require any further configuration details. Simply follow the given instructions to install the update.

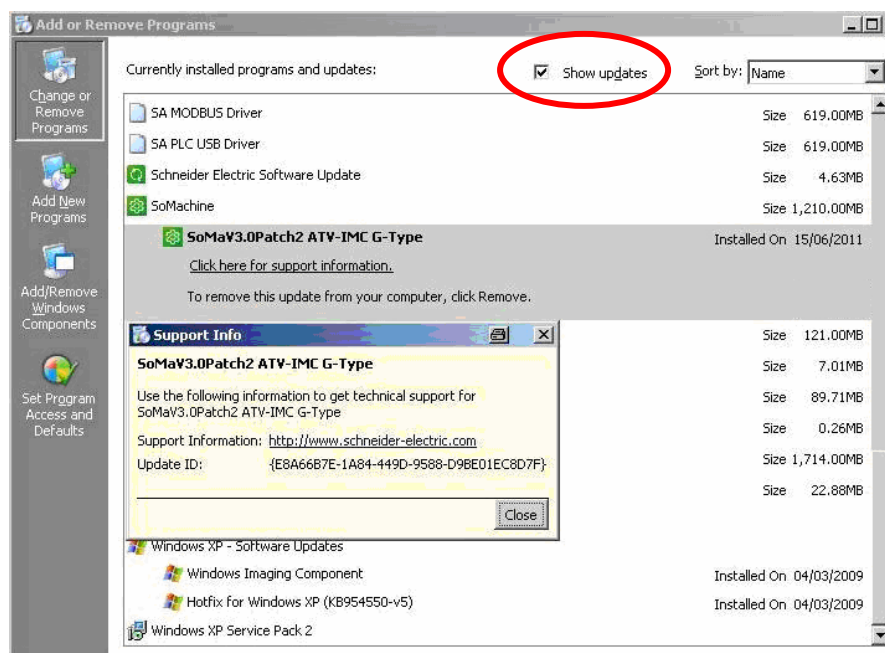
(5) In case the installation utility comes up with a message that reads as follows:



This error indicates that the current installation of SoMachine is incompatible with this update package.

(6) After the update has been successfully installed, you will find the update in the “Add or Remove Programs” of the Window’s Control Panel; ensure that you have check marked the “Show updates” checkbox in the header line of the dialog to see all updates.

Please note that this patch cannot individually be removed from SoMachine.



## Evolution / Enhancement

The Online help is modified accordingly in all the six languages.  
The functionalities are the same as the previous version of the firmware (V1.1.1.9).  
Nevertheless two corrections have been done:

| Defect   | State     |
|--|-----------|
| The variables are inverted in the Webserver (Monitoring-> Data Parameters)   | Corrected |
| The oscilloscope is frozen if Refresh and after Save functions are activated | Corrected |
| The master CANopen stops working if the Altivar 71 is switched off           | Corrected |