

# EVlink release note for software version 3300

date: 2020\_06\_17

## 1) Document scope

This release note presents the new features and modifications added to the EVlink charging station.

This release for the EVlink software is a mandatory update to benefit from the full functionalities of EVlink Parking range or EVlink Smart Wallbox range and EVlink City range.

The software release package will consist of the charging station software and associated documentation.

## 2) Software and Hardware requirements

This software release applies to EVlink charging stations with 2 conditions detailed in next sections:

- Hardware compatibility
- Software compatibility

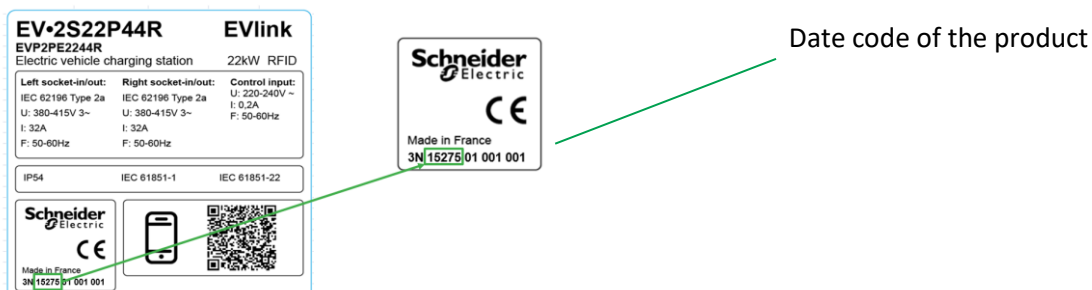
### 2.a Hardware Revision

This software release is compatible with charging stations:

- EVlink Smart Wallbox: EVB
- EVlink Parking: EVF2... and EVW2
- EVlink City with a datecode greater than 15401

You can check the date code directly on the product or in the commissioning tool as shown below.

### Directly on the product



**Schneider Electric Industries SAS**  
 35, rue Joseph Monier  
 CS 30323  
 F - 92506 Reuil Malmaison Cedex  
[www.se.com](http://www.se.com)

**Electrical equipment and systems must be installed, connected and used in compliance with prevailing standards and/or installation regulations.**

As standards, specifications and designs change from time to time, always ask for confirmation of the information given in this publication.

© Schneider Electric - All rights reserved.

On the Commissioning tool (in the Maintenance Tab)\_

**Maintenance Report**

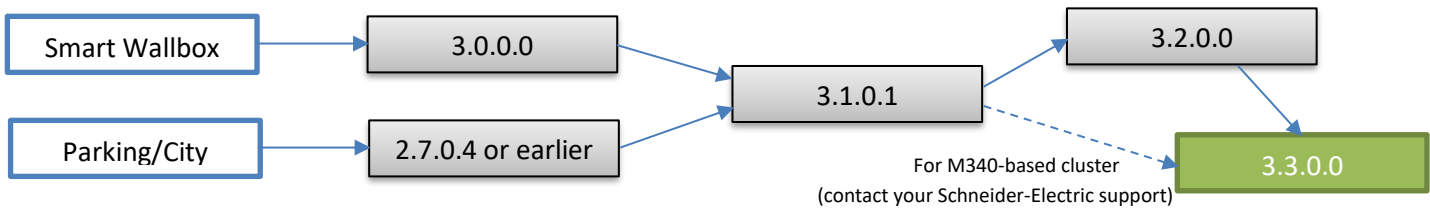
**Product Number**

	Plug #104
Commercial Ref	EVB1A22P4ERI
Factory Code	3N
Production Date	16043
Production Revision	00
Batch Number	002
Unique Identifier	001
Product Id	501B67D
Serial Number Part 1	3N155110441G2
Serial Number Part 2	S1B7551700014

In this example : Production Date is 16043

**2.b Software compatibility**

The software update requires that the charging station has a recent software installed onboard. The version required 3.2.0.0 (aka R6).



Software version can be checked using the Commissioning tool in the Updates Tab.

See example below based on 3101.26

admin | Logout | English | User manual |

Configuration | Energy Management | Charge Data Record | Maintenance

Charging station 1  
Operational

Status | Report | Control | Passwords | Firmware update

Installed versions

@	Electronic board	Commissioning tool	RFID reader
102	3101-26	3101-26	1300
103	3101-26	3101-26	-

Upgrade firmware

Select a package to install

Choisissez un fichier | n6\_updat...\_d2.epk | Install

More details can be found in the below section “Upgrade procedure”.

**Schneider Electric Industries SAS**  
 35, rue Joseph Monier  
 CS 30323  
 F - 92506 Reuil Malmaison Cedex  
[www.se.com](http://www.se.com)

**Electrical equipment and systems must be installed, connected and used in compliance with prevailing standards and/or installation regulations.**

As standards, specifications and designs change from time to time, always ask for confirmation of the information given in this publication.

© Schneider Electric - All rights reserved.

### 2.c Cluster configuration

When the Charging Station is included in a cluster managed by a Schneider Electric M340 device, please contact your Schneider Electric support for the software update.

### 3) Software upgrade procedure (non OCPP)

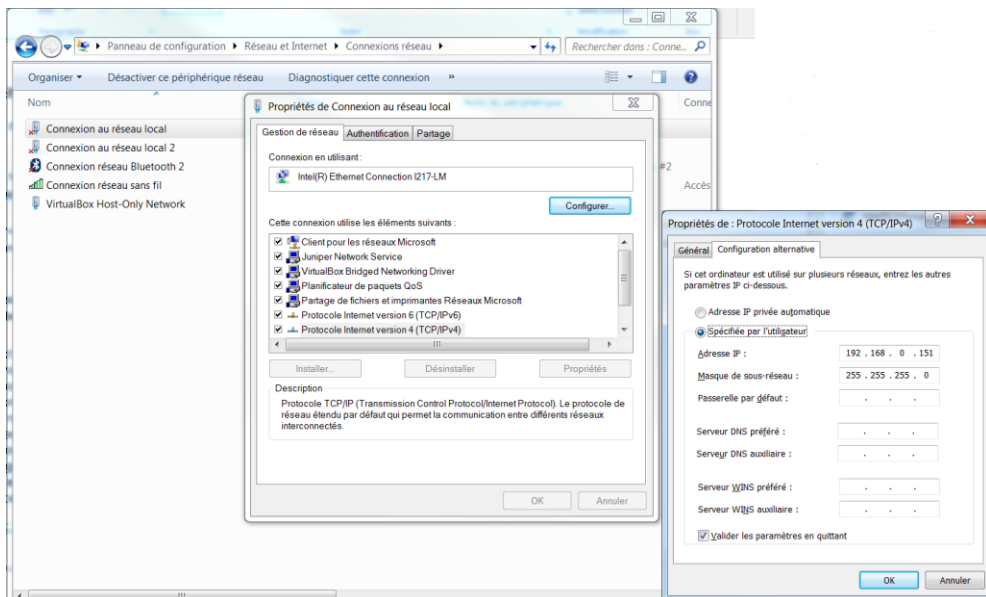
Software upgrade is not possible on all types of Charging Stations (see “Hardware/software requirements” section above).

If your Charging Station has an older software version than 3.1.0.1, then please start with upgrading to 3.1.0.1. If your Charging Station is managed by an OCPP supervision, please jump to next section.

**Note:** in case of cluster with Energy Management features, please contact your Schneider Electric support.

**Follow the procedure below and the remarks:**

- 1) First connect to the Charging Station using an Ethernet cable (slot #1, on the left), and check that your computer can communicate with the Charging Station. You may need to change your network adapter settings, as shown below.



- The firmware version displayed in the “Maintenance” tab, “Firmware update” subtab shall be 3.2.0.0, otherwise a preliminary upgrade to 3.2.0.0 is required before proceeding with next steps.

admin | Logout | English | User manual

Configuration Energy Management Charge Data Record Maintenance

Charging station 1 Operational

Status Report Control Passwords Firmware update

Installed versions

@	Electronic board	Commissioning tool	RFID reader
102	3200-12	3200-12	1300
103	3200-12	3200-12	-

- Click on “Browse” and select “r7\_update\_3.3.0.6\_d4.epk”, and click “Install”.
- Wait for progress bar to complete, and check that no error messages are displayed.
- Reboot the Charging Station, by clicking on “Reboot” button.

admin | Logout | English | User manual

Configuration Energy Management Charge Data Record Maintenance

Charging station 1 Operational

Status Report Control Passwords Firmware update

Installed versions

@	Electronic board	Commissioning tool	RFID reader
102	3200-12	3200-12	1300
103	3200-12	3200-12	-

Upgrade firmware

Select a package to install

Choisissez un fichier r7\_updat...\_d4.epk **Install** **Reboot**

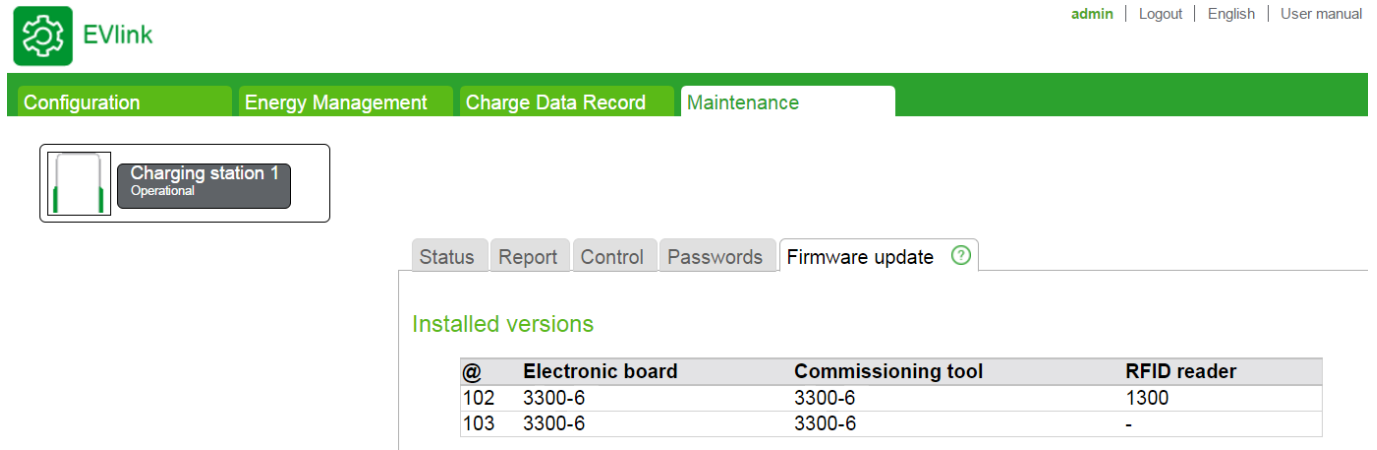
Estimated time: 60 sec

1'07"

Socket-outlet - IP# 102: Operation completed, please check after reboot that the soft has been correctly updated  
 Socket-outlet - IP# 103: Operation completed, please check after reboot that the soft has been correctly updated

**OK : 2/2** Please restart to complete upgrade process (refresh after 30s)

The station will reboot, and you will need to reload the page to check the new firmware version.



**Important remark:**

- Don't refresh the web page (F5 or refresh) during the process.
- Wait until the status light of the charging station turns off and then on again to be sure that the restart with the new software is successfully completed.

**NOTE:** With Smart Wallbox EVB fitted with a key lock, make sure that the station is unlocked, otherwise the status light remains off and it is not possible to check that the restart is completed.

After the reboot, please refresh your window and check in the "Maintenance"/"Firmware Update" tab that the Electric Board and the Commissioning Tool version for each socket outlet is 3.3.0.0.

If not, redo the whole update process.

**4) Software upgrade procedure (OCPP)**

The software update to version 3.3.0.0 can be done from an OCPP supervision, provided the hardware is compatible (see "Hardware/software requirements" section above).

If your Charging Station has a version 3.1.0.1, you can contact your Schneider Electric support to jump directly to version 3.3.0.0. (See §3 to know where to find the Software version of your product.)

The update procedure lasts typically 10 minutes and requires a Charging Station reboot.

After reboot please check that both connectors have the same software version, otherwise run the procedure again.

## 5) Improvements or bug fix

The list of improvements and bug fixes is given below:

### Smart Wallbox :

- RFID reader behavior improvement after wrong charging cable plug in action

### Supervised stations (OCPP):

- Preparing status is reported on EV connection at station restart
- Improvement of Soft Reset behavior
- No more error message issued to supervision when EV still connected to charger at the end of charging session: charging station remains in finishing state
- Configuration parameter [maxIntensitySocket] not used by Smart charging feature anymore
- Charging station serial number set to 25 characters by default
- External modem communication enhancement for SOAP communication
- Charging station default date updated to be compliant with new security certificates
- Robustification of charging station firmware upgrade through http protocol

## 6) Functions removed

- None

## 7) Known limitations and issues

- RFID Reader upgrade is not possible with software versions 3101 to 3300-09. Once you have updated the main firmware in 3300-10 or higher, you can upgrade also the RFID reader if you face compatibility issue with some badges. The 1400 software is included in this package as a separated file.

## 8) Other resources

- Availability of SW packages
  - On se.com with [following link](#).
- Users' manual: see DOCA0060EN-07 on [www.se.com](http://www.se.com)
- Troubleshooting guide: see DOCA0117EN-07 on [www.se.com](http://www.se.com)