

Product data sheet

Characteristics

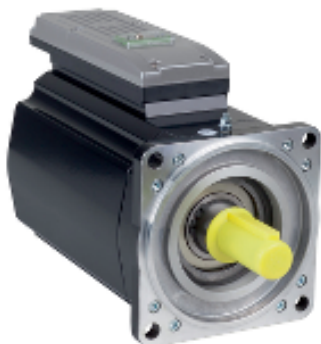
ILM1401M22A0000

integrated servo motor - 8.5 Nm - 1500 rpm -
multiturn - without brake - IP65



Product availability: Non-Stock - Not normally stocked in distribution facility

Price*: 3759.72 USD



Main

Range of product	PacDrive 3
Product or component type	Servo motor integrated drive
Device short name	ILM

Complementary

[Us] rated supply voltage	250...700 V
Continuous stall current	3.2 A
Continuous stall torque	75.22 lbf.in (8.5 N.m)
Peak stall torque	238.94 lbf.in (27 N.m)
Nominal output power	1300 W
Nominal torque	73.45 lbf.in (8.3 N.m)
Nominal speed	1500 rpm
Maximum current Irms	14.6 A
Line Rated Current	3.15 A
Shaft end	Untapped
Second shaft	Without second shaft end
Shaft diameter	0.94 in (24 mm)
Shaft length	1.97 in (50 mm)
Key width	1.57 in (40 mm)
Feedback type	Absolute multiturn SinCos Hiperface
Speed feedback resolution	128 periods
Holding brake	Without
Mounting support	International standard flange
Motor flange size	5.51 in (140 mm)
Torque constant	2.65 N.m/A at 248 °F (120 °C)
Back emf constant	175 V/krpm at 68 °F (20 °C)
Number of motor poles	10
Rotor inertia	7.41 kg.cm ²

Stator resistance	4.58 Ohm at 68 °F (20 °C) for Ph/Ph 3.18 Ohm at 248 °F (120 °C) for Ph/N
Stator inductance	50 mH at 68 °F (20 °C) for Ph/Ph 25 mH at 248 °F (120 °C) for Ph/N
Maximum radial force Fr	1760 N at 2000 rpm 2210 N at 1000 rpm
Maximum axial force Fa	0.2 x Fr
Type of cooling	Natural convection
Length	10 in (254 mm)
Number of motor stacks	1
Centring collar diameter	5.12 in (130 mm)
Centring collar depth	0.14 in (3.5 mm)
Number of mounting holes	4
Mounting holes diameter	0.43 in (11 mm)
Circle diameter of the mounting holes	6.5 in (165 mm)
Product weight	27.56 lb(US) (12.5 kg)

Environment

IP degree of protection	IP65
-------------------------	------

Ordering and shipping details

Category	18351 - PACDRIVE3 INTEGRATED DRIVES
Discount Schedule	PC52
Nbr. of units in pkg.	1
Package weight(Lbs)	8.4000000000000004
Returnability	N
Country of origin	DE

Offer Sustainability

Sustainable offer status	Green Premium product
RoHS (date code: YYWW)	Compliant - since 1235 - Schneider Electric declaration of conformity Schneider-Electric declaration of conformity
REACH	Reference not containing SVHC above the threshold
Product environmental profile	Available Product Environmental Profile
Product end of life instructions	Available End Of Life Information
California proposition 65	WARNING: This product can expose you to chemicals including:
----- Substance 1	Lead and lead compounds, which is known to the State of California to cause cancer and birth defects or other reproductive harm.
----- More information	For more information go to www.p65warnings.ca.gov

Contractual warranty

Warranty period	18 months
-----------------	-----------

Product Life Status : **Commercialised**