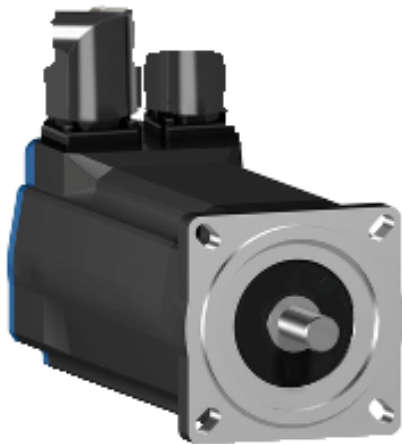


# BSH0703M22A2A

AC servo motor BSH - 2.8 N.m - 1500 rpm -  
untapped shaft - without brake - IP65



## Main

Product or component type	Servo motor
Device short name	BSH
Maximum mechanical speed	8000 Rpm
Continuous stall torque	2.8 N.M for LXM05AD10M2, 200...240 V, single phase 2.8 N.M for LXM05BD10M2, 200...240 V, single phase 2.8 N.M for LXM05CD10M2, 200...240 V, single phase 2.8 N.M for LXM05AD10M3X, 200...240 V, three phase 2.8 N.M for LXM05AD14N4, 380...480 V, three phase 2.8 N.M for LXM05BD10M3X, 200...240 V, three phase 2.8 N.M for LXM05BD14N4, 380...480 V, three phase 2.8 N.M for LXM05CD10M3X, 200...240 V, three phase 2.8 N.M for LXM05CD14N4, 380...480 V, three phase
Peak stall torque	8.6 N.M for LXM05AD10M2, 200...240 V, single phase 8.6 N.M for LXM05BD10M2, 200...240 V, single phase 8.6 N.M for LXM05CD10M2, 200...240 V, single phase 8.6 N.M for LXM05AD10M3X, 200...240 V, three phase 8.6 N.M for LXM05AD14N4, 380...480 V, three phase 8.6 N.M for LXM05BD10M3X, 200...240 V, three phase 8.6 N.M for LXM05BD14N4, 380...480 V, three phase 8.6 N.M for LXM05CD10M3X, 200...240 V, three phase 8.6 N.M for LXM05CD14N4, 380...480 V, three phase
Nominal output power	400 W for LXM05AD10M2, 200...240 V, single phase 400 W for LXM05BD10M2, 200...240 V, single phase 400 W for LXM05CD10M2, 200...240 V, single phase 400 W for LXM05AD10M3X, 200...240 V, three phase 400 W for LXM05BD10M3X, 200...240 V, three phase 400 W for LXM05CD10M3X, 200...240 V, three phase 750 W for LXM05AD14N4, 380...480 V, three phase 750 W for LXM05BD14N4, 380...480 V, three phase 750 W for LXM05CD14N4, 380...480 V, three phase
Nominal torque	2.63 N.M for LXM05AD10M2, 200...240 V, single phase 2.63 N.M for LXM05BD10M2, 200...240 V, single phase 2.63 N.M for LXM05CD10M2, 200...240 V, single phase 2.4 N.M for LXM05AD14N4, 380...480 V, three phase 2.4 N.M for LXM05BD14N4, 380...480 V, three phase 2.4 N.M for LXM05CD14N4, 380...480 V, three phase 2.63 N.M for LXM05AD10M3X, 200...240 V, three phase 2.63 N.M for LXM05BD10M3X, 200...240 V, three phase 2.63 N.M for LXM05CD10M3X, 200...240 V, three phase
Nominal speed	1500 rpm for LXM05AD10M2, 200...240 V, single phase 1500 rpm for LXM05BD10M2, 200...240 V, single phase 1500 rpm for LXM05CD10M2, 200...240 V, single phase 1500 rpm for LXM05AD10M3X, 200...240 V, three phase 1500 rpm for LXM05BD10M3X, 200...240 V, three phase 1500 rpm for LXM05CD10M3X, 200...240 V, three phase 3000 rpm for LXM05AD14N4, 380...480 V, three phase 3000 rpm for LXM05BD14N4, 380...480 V, three phase 3000 rpm for LXM05CD14N4, 380...480 V, three phase

The information provided in this documentation contains general descriptions and/or technical characteristics of the performance of the products contained herein. This documentation is not intended as a substitute for and is not to be used for determining suitability or reliability of these products for specific user applications. It is the duty of any such user or integrator to perform the appropriate and complete risk analysis, evaluation and testing of the products with respect to the relevant specific application or use thereof. Neither Schneider Electric Industries SAS nor any of its affiliates or subsidiaries shall be responsible or liable for misuse of the information contained herein.

Product compatibility	LXM05AD10M2 at 200...240 V single phase LXM05BD10M2 at 200...240 V single phase LXM05CD10M2 at 200...240 V single phase LXM05AD10M3X at 200...240 V three phase LXM05BD10M3X at 200...240 V three phase LXM05CD10M3X at 200...240 V three phase LXM05AD14N4 at 380...480 V three phase LXM05BD14N4 at 380...480 V three phase LXM05CD14N4 at 380...480 V three phase
Shaft end	Untapped
IP degree of protection	IP65 standard IP67 with IP67 kit
Speed feedback resolution	131072 points/turn x 4096 turns
Holding brake	Without
Mounting support	International standard flange
Electrical connection	Rotatable right-angled connectors

## Complementary

Range compatibility	Lexium 05
[Us] rated supply voltage	480 V
Network number of phases	Three phase
Continuous stall current	2.1 A
Continuous power	1.7 W
Maximum current Irms	8.7 A for LXM05AD10M2 8.7 A for LXM05AD10M3X 8.7 A for LXM05AD14N4 8.7 A for LXM05BD10M2 8.7 A for LXM05BD10M3X 8.7 A for LXM05BD14N4 8.7 A for LXM05CD10M2 8.7 A for LXM05CD10M3X 8.7 A for LXM05CD14N4
Maximum permanent current	8.7 A
Switching frequency	4 kHz
Second shaft	Without second shaft end
Shaft diameter	14 Mm
Shaft length	30 Mm
Feedback type	Multiturn SinCos Hiperface
Motor flange size	70 Mm
Torque constant	1.48 N.M/A at 120 °C
Back emf constant	95 V/Krpm at 120 °C
Number of motor poles	6
Rotor inertia	0.58 Kg.Cm <sup>2</sup>
Stator resistance	10.2 Ohm at 20 °C
Stator inductance	49.2 MH at 20 °C
Stator electrical time constant	4.82 Ms at 20 °C
Maximum radial force Fr	400 N at 6000 rpm 430 N at 5000 rpm 460 N at 4000 rpm 510 N at 3000 rpm 580 N at 2000 rpm 730 N at 1000 rpm
Maximum axial force Fa	0.2 x Fr
Type of cooling	Natural convection
Length	220 Mm
Centring collar diameter	60 Mm
Centring collar depth	2.5 Mm
Number of mounting holes	4
Mounting holes diameter	5.5 Mm
Circle diameter of the mounting holes	82 Mm
Net weight	3.62 Kg

Contractual warranty

---

Warranty	18 months
----------	-----------

---

Product Life Status : **Commercialised**