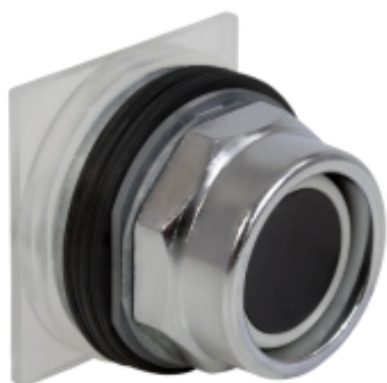




by Schneider Electric



Main

Range of product	Harmony 9001K
Product or component type	Push-button
Device short name	K
Operator profile	Black flush
Operator additional information	Full guard in plastic

Complementary

Bezel material	Chromium plated metal
Mounting diameter	30 mm
Light source	Without
Light block supply	Without supply
[Ie] rated operational current	10 A (AC-15) 10 A (DC-13)
Contact operation	Standard
Device presentation	Complete product

Environment

Product certifications	CE NEMA UL listed file E42259 CCN NKCR CSA LR 25490 class 3211 03
NEMA degree of protection	NEMA 1/2/3/3R/4/6/12/13

Product Life Status : **Commercialised**

The information provided in this documentation contains general descriptions and/or technical characteristics of the products contained herein. This documentation is not intended as a substitute for and is not to be used for determining suitability or reliability of these products for specific user applications. It is the duty of any such user or integrator to perform the appropriate and complete risk analysis, evaluation and testing of the products with respect to the relevant specific application or use thereof. Neither Schneider Electric Industries SAS nor any of its affiliates or subsidiaries shall be responsible or liable for misuse of the information contained herein.