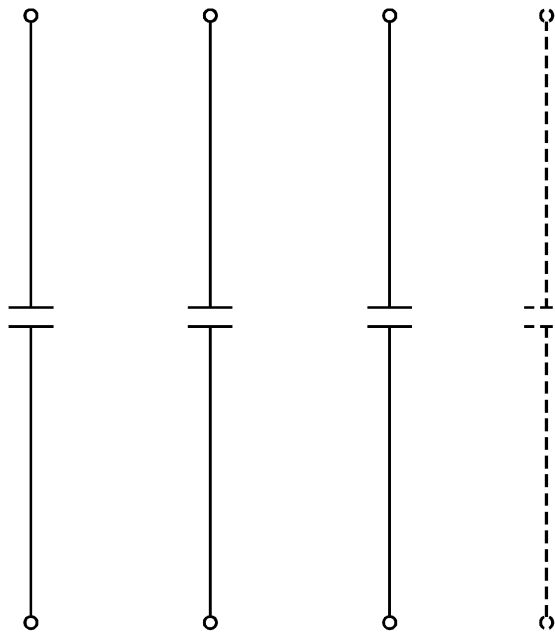


MAIN POWER POLES

RC OPERATOR CIRCUIT

LINE

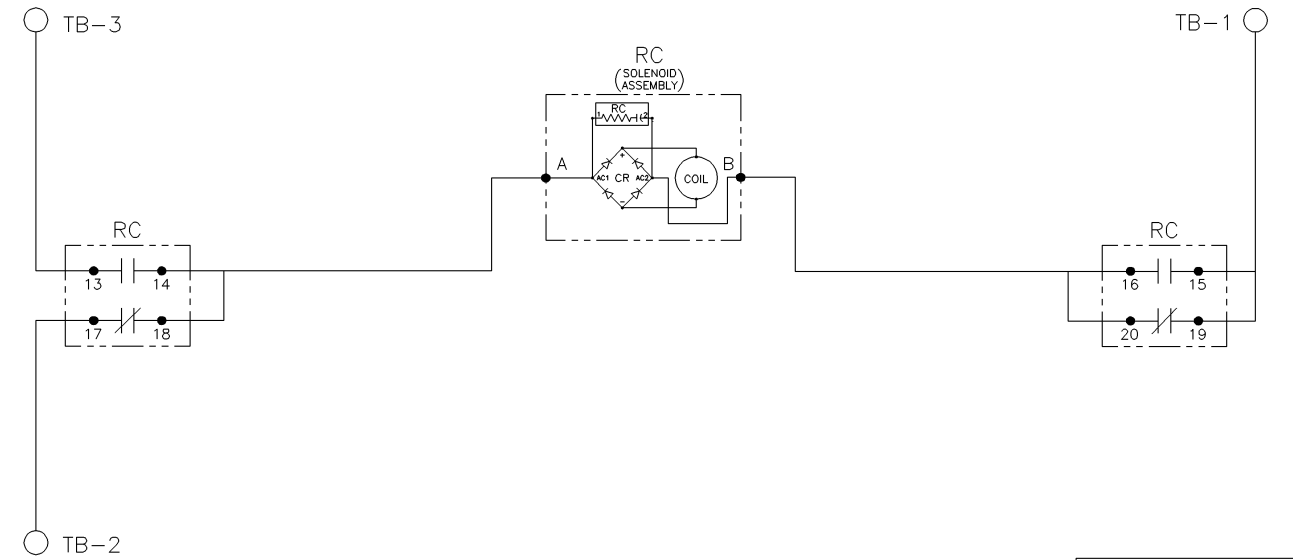


LOAD

OPTIONAL NEUTRAL TYPES
REFER TO "EXPLANATION OF CATALOG NUMBER CODES"
IN CATALOG NUMBER CHART.

- NONE
- SOLID BUS PLATE

NOTE:
RC SHOWN OPEN



TS	SOLENOID POSITION			
	CLOSED BEFORE NORMAL	BEFORE TDC >	BEFORE TDC <	CLOSED EMERG
13-14				
15-16				
17-18				
19-20				

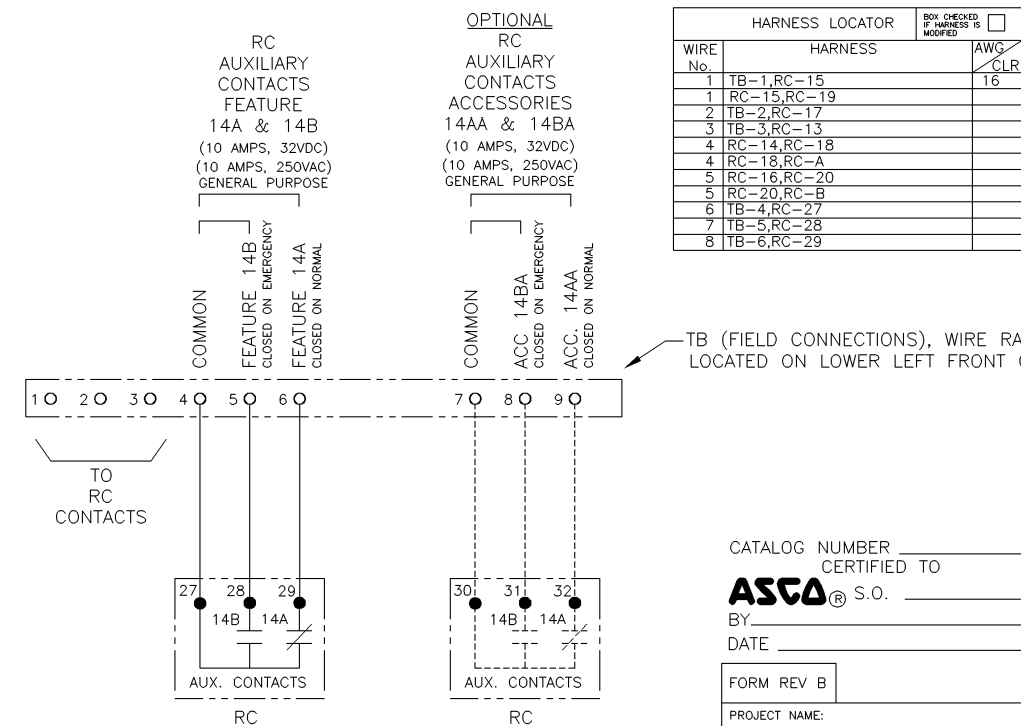
TDC (TOP DEAD CENTER)
TRANSFER SWITCH TEST & ADJUSTMENT PROCEDURE
SPECIFIES CONTROL CUT-OFF (CONTACT OPENING)
SETTING.

GENERAL NOTES

ADDITIONAL WIRING

GENERAL NOTES

- FOR ACCESSORY INTER WIRING REFER TO DWG 355634. SUPPLIED ON ENCLOSED TYPE SWITCHES ONLY.
- WHEN RC COIL AND LINE VOLTAGE ARE THE SAME, THE RC CONTROL VOLTAGE CAN BE DERIVED FROM THE LINE POLES OF THE RC SWITCH.
- OMIT CENTER POLE FOR TWO POLE SWITCHES.
- INDICATES CUSTOMER CONNECTION POINTS.
● INDICATES FACTORY CONNECTION POINTS.
- CONNECTION POINTS THAT HAVE BOTH CUSTOMER AND FACTORY CONNECTIONS ARE SHOWN AS CUSTOMER CONNECTIONS.
- MAIN CONTACTS ARE SHOWN IN OPEN POSITION WITH CONTROL LINE DE-ENERGIZED SEE RATINGS BELOW.
- FOR RC INRUSH AND LINE RUN VALUES REFER TO ORDERING SECTION 2 OF CATALOG 1100.
- DEVICE SYMBOLS AND DESIGNATIONS ARE IN ACCORDANCE WITH NEMA PUB. ICS 1-1983, PART 1-101A, EXCEPT FOR THOSE LISTED IN LEGEND.
- SUITABLE FOR THE CONTROL OF MOTORS, ELECTRIC DISCHARGE LAMPS, AND ELECTRICAL HEATING EQUIPMENT WHERE THE SUM OF MOTOR FULL-LOAD AMPERE RATINGS AND THE AMPERE RATINGS OF OTHER LOADS DO NOT EXCEED THE AMPERE RATING OF THE SWITCH AND THE TUNGSTEN LOAD DOES NOT EXCEED 100 PERCENT OF THE SWITCH RATING FOR SWITCHES UP TO 400 AMPERES; AND THE TUNGSTEN LOAD DOES NOT EXCEED 30% OF THE SWITCH RATINGS FOR SWITCHES OVER 400 AMPERES.



WIRE No.	HARNESS	AWG	CLR
1	TB-1, RC-15	16	
1	RC-15, RC-19		
2	TB-2, RC-17		
3	TB-3, RC-13		
4	RC-14, RC-18		
4	RC-18, RC-A		
5	RC-16, RC-20		
5	RC-20, RC-B		
6	TB-4, RC-27		
7	TB-5, RC-28		
8	TB-6, RC-29		

WIRE No.	OPTIONAL ACC. 14AA & 14BA	AWG	CLR
32	RC-30, TB-7	16	
33	RC-31, TB-8		
34	RC-32, TB-9		

TB (FIELD CONNECTIONS), WIRE RANGE: 22-12 AWG
LOCATED ON LOWER LEFT FRONT OF RC

BASE CATALOG NUMBER				CATALOG NUMBER SUFFIXES				EXPLANATION OF CATALOG NUMBER CODES																
TS FRAME	CATALOG TYPE	NEUTRAL TYPE	PHASE POLES	AMPS	VOLT CODE	CONTROLLER	OPTIONAL ACCESSORY	ENCLOSURE CODE	NEUTRAL TYPE		VOLTAGE CODES		ENCLOSURE CODES											
									CODE	DESCRIPTION	CODE	NOMINAL VOLTAGE	CODE	TYPE	DESCRIPTION									
H	911	A	2	600	C	1	X		BLANK A	NONE			C	1	OPEN TYPE (NO ENCLOSURE)									
			3	800	D					SOLID			E	2	GENERAL PURPOSE, INDOOR									
				1000	E								F	3R	INDOOR, WATER & DUST RESISTANT									
				1200	F								G	4	INDOOR/OUTDOOR, WATERTIGHT & DUSTTIGHT									
					G								H	4X	OUTDOOR, RAINPROOF, SLEET & ICE RESISTANT									
					H								J	4X	INDOOR/OUTDOOR, WATERTIGHT & DUSTTIGHT									
					I								K	7	TYPE 4 PLUS CORROSION RESISTANCE (STAINLESS STEEL)									
					J								L	12	TYPE 4 PLUS CORROSION RESISTANCE (FIBERGLASS)									
					K										EXPLOSION PROOF									
					L										INDOOR, INDUSTRIAL ENVIRONMENTS, OILTIGHT & DUSTTIGHT									
					M								M	3R	(SECURE ENCLOSURES)									
					N								N	4	OUTDOOR, RAINPROOF, SLEET & ICE RESISTANT									
					O								P	4X	INDOOR/OUTDOOR, WATERTIGHT & DUSTTIGHT									
					P								Q	12	TYPE 4 PLUS CORROSION RESISTANCE (STAINLESS STEEL)									
					R										INDOOR, INDUSTRIAL ENVIRONMENTS, OILTIGHT & DUSTTIGHT									

CATALOG NUMBER _____
CERTIFIED TO
ASCO® S.O. _____
BY _____
DATE _____

FORM REV B

PROJECT NAME: _____
WIRING DIAGRAM
SERIES H911 ATS

BY: _____
DATE: _____

MANUFACTURING TOLERANCES TO BE IN ACCORDANCE WITH ASCO PROCEDURE MP-1-003. FOR PLASTIC PARTS SEE MP-1-055.

PROPERTY OF ASCO POWER TECHNOLOGIES. USE PERMITTED FOR OUR WORK ONLY. ALL RIGHTS OF DESIGN OR INVENTION ARE RESERVED.

ASCO POWER TECHNOLOGIES, L.P.
FLORHAM PARK, NEW JERSEY 07932 U.S.A.

AE	AN	AM	AL	AS	AR	AT
CH	AV	AA	PS	AS	AS	AS
AG	AP	AC	AS	AS	AS	AS

SCALE: 1:1 ACAD FILE

SIZE: DWG. NO. DS724242

CHANGE LETTER B ECH. NO. 163450 SHEET 1 OF 1