

Installation of V6.1 Software

Installation der Software V6.1

Installation logiciels V6.1

ENGLISH

DEUTSCH

FRANÇAIS

Section		Page
1	Introduction	1/1
1.1	Product description	1/1
1.1-1	Contents of the V6.1 packages	1/2
1.2	Required configuration	1/4
1.3	Various types of installation	1/5
2	Installation on a local station	2/1
2.1	General	2/1
2.2	Installation	2/1
2.2-1	Preface	2/1
2.2-2	Running the installation procedure	2/2
2.2-3	Standard installation	2/4
2.2-4	Custom installation	2/7
2.2-5	Transferring the Rights of Use	2/9
2.3	Installing and setting parameters for communication drivers	2/12
2.3-1	OS/2 UTW Driver	2/12
2.3-2	TSX PC Driver	2/14
2.4	Updating software	2/16
2.5	Access and initialization command	2/16

Section	Page	
3	Installation on a server	3/1
3.1	Section reserved for the network administrator	3/1
3.2	Installation of the server station	3/2
3.3	Preparing the client station	3/3

1.1 Product description

The V6.1 software workshop range consists mainly of independent software product packages grouped according to their type of use. There are 5 such software groups, called PACKS, described below:

- XTEL PACK
- PL722 PACK
- DIAG PACK
- MMI37 PACK
- NET PACK

Independent products which share the same installation procedure must also be added to this list:

- XTEL-DOC
- SIMACTEL
- SIMACTEL EXTENSION
- PL7-PMS2

The physical contents of these products consists of:

- the programs on 3 1/2" diskettes or on a CD-ROM,
- the software key modules in the form of hardware key modules (except for XTEL PACK, PL722 PACK and DIAG PACK) and the diskette key modules,
- this accompanying sheet,
- the documentation for the products on a CD-ROM.

1.1-1 Contents of the V6.1 packages

The various packages consist of the following software:

- **XTEL PACK**
 - X-TEL software workshop
 - TSX 7 catalogue
 - TBX catalogue
 - FTX/CCX catalogue
 - FIPIO standard FSDP catalogue
 - Momentum catalogue
 - OS/2 PC driver
 - OS/2 Uni-Telway driver
 - PROM programmer
 - PL7-22
 - PL7-3
 - OFB PL7-3
 - OFB DIAG
 - XTEL-MOD
 - XTEL-CAD
 - S-VIEW
 - PL7-COM
 - OFB COM
 - PL7-AXE
 - OFB-AXE
 - PL7-PCL
 - OFB PCL
 - PL7 MMI17
 - ADJUST MAX
 - OFB MAX
 - X-TEL DEMO

- **PL722 PACK**
 - X-TEL software workshop
 - TSX 7 catalogue
 - TBX catalogue
 - FTX/CCX catalogue
 - FIPIO standard FSDP catalogue
 - Momentum catalogue
 - OS/2 PC driver
 - OS/2 Uni-Telway driver
 - PROM programmer
 - PL7-22
 - PL7 MMI17
 - X-TEL DEMO

-
- **DIAG PACK**
 - X-TEL software workshop
 - TSX 7 catalogue
 - TBX catalogue
 - FTX/CCX catalogue
 - FIPIO standard FSDP catalogue
 - Momentum catalogue
 - OS/2 PC driver
 - OS/2 Uni-Telway driver
 - PROM programmer
 - SYSDIAG
 - APPLIDIAG
 - X-TEL DEMO

 - **MMI37 PACK**
 - PL7-MMI37
 - OFB MMI37
 - ADJUST MMI37
 - DIAG MMI37
 - DIAG FAS
 - VISUDYN MMI37
 - HELP MMI37

 - **NET PACK**
 - PL7-NET
 - NETDIAG

 - **XTEL-DOC**
 - XTEL-DOC

 - **SIMACTEL**
 - SIMACTEL

 - **SIMACTEL EXT**
 - SIMACTEL EXTENSION

 - **PL7-PMS2**
 - PL7-PMS2
 - OFB PMS2
 - PMS2 MMX
-

1.2 Required configuration

X-TEL V6.1 and its software is designed to run under OS/2 version 2.1, 3.0 WARP Red, 3.0 WARP Blue and 4.0.

The use of these operating systems requires machines with a microprocessor (minimum 386); however, 486 or Pentium based PCs are recommended for continuous use of the software.

X-TEL runs in VGA or higher (eg. SVGA, XGA, etc.) graphics mode.

It is recommended that the station be equipped with a two-button mouse pointing device.

The minimum recommended configuration is a 486 SX25 based PC with:

- at least 8 Mb of RAM memory for a standalone station,
- at least 12 Mb of RAM memory if the station is on a network, if Windows applications have to be run under OS/2 or if PL7-3 V6 has to run.
- 100 Mb available on hard disk.

Check that the SWAPATH variable in the CONFIG.SYS file has the following parameters: 2048 and 20480 (or greater). The first figure shows the minimum value of available disk space before a warning message signals lack of space. The second figure shows the initial size of the SWAP file.

The use of the CD-ROM medium means the station must have a built-in drive or an external CD-ROM drive must be used.

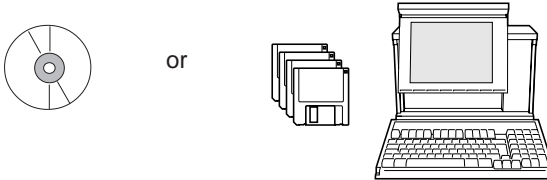
If the software workshop runs under OS/2 version 4.0, it is mandatory to carry out the following operations before using it for the first time to ensure correct display of all the workshop software programs:

- open the X-TEL software workshop window (X-TEL icon),
- activate the window's Option/Variations menu,
- select the OS2 Warp 3.0 icon (right-click with the mouse),
- drag this icon on to the office while pressing the right mouse button (also keep the Alt key pressed throughout this action).

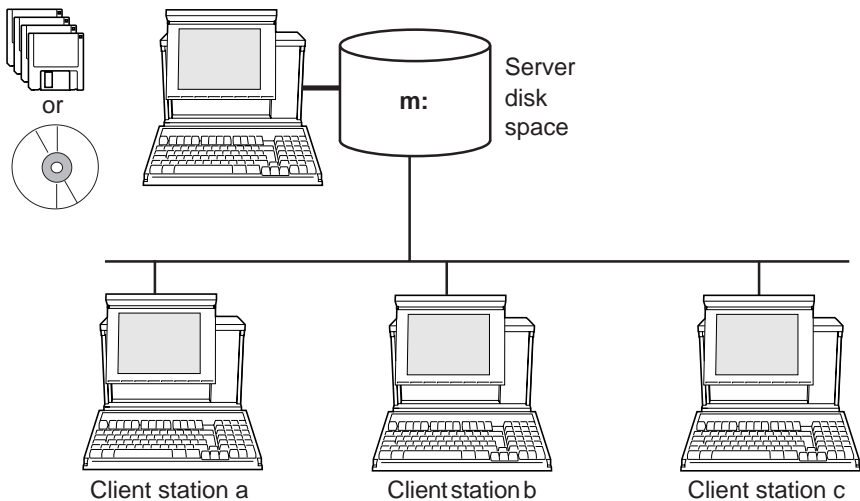
1.3 Various types of installation

The X-TEL software workshop may be installed :

- on the **local disk** of an FTX 507 type terminal or PC compatible,



- on the **remote disk** of a server. The other client stations which are connected to the network can be updated without using an installation disk. This type of installation is only possible for packages containing the X-TEL workshop.



The procedure for installing the software workshop at server terminal level and updating the client terminals is described in section 3.

Note:

This type of installation requires full knowledge of the server systems and management of the corresponding network.

2.1 General

The installation procedure for software packages is standard, whatever the type of package installed and whatever medium is used, diskettes or CD ROM.

The difference between the packages, apart from their type of use, is the presence of the X-TEL software workshop in the package.

A software package containing X-TEL may be installed on any station equipped with the OS/2 system. This is the case for XTEL PACK, PL7-22 PACK and DIAG PACK.

Conversely, products not supplied with X-TEL must be installed on a station already equipped with the X-TEL software workshop. This is the case for MM137 PACK, NET PACK, XTEL-DOC, SIMACTEL, SIMACTEL EXTENSION and PL7-PMS2.

For version V6.1 and later of the packages, the software rights of use are also supplied on diskette key modules. However, to manage these rights of use, the X-TEL V6.1 software must be installed. It is contained in the following packages : XTEL PACK V6.1, PL722 PACK V6.1 or DIAG PACK V6.1.

When the X-TEL V6.1 software is not installed on the station, the user continues to use the hardware keys as for V6.

In all cases the user should follow the installation recommendations given in section 2.2-1.

2.2 Installation

2.2-1 Preface

1 You wish to install XTEL PACK V6.1, PL722 PACK V6.1 or DIAG PACK V6.1 :

- Perform a custom installation by selecting the name of the package to install in the **Installable Products** window (see section 2.2-4),
- Transfer the rights of use from the diskette key modules to the hard disk (see section 2.2-5).

2 You wish to install MMI37 PACK V6.1, NET PACK V6.1, XTEL-DOC, SIMACTEL, SIMACTEL EXTENSION or PL7-PMS2. There are two different cases :

- The X-TEL software workshop is **version V6.1 or higher** (XTEL/Help menu/ **Product Data** window):
 - Perform a custom installation by selecting the name of the package to install in the **Installable Products** window (see section 2.2-4),
 - Transfer the rights of use from the diskette key modules to the hard disk (see section 2.2-5).
- The X-TEL software workshop is **earlier than version V6.1** (XTEL/Help menu/ **Product Data** window):
 - Perform a standard installation (see section 2.2-3),
 - Transfer the rights of use from the hardware key modules to the hard disk (see section 2.2-5).

2.2-2 Running the installation procedure

To install a software package under OS/2, close all the applications in progress.

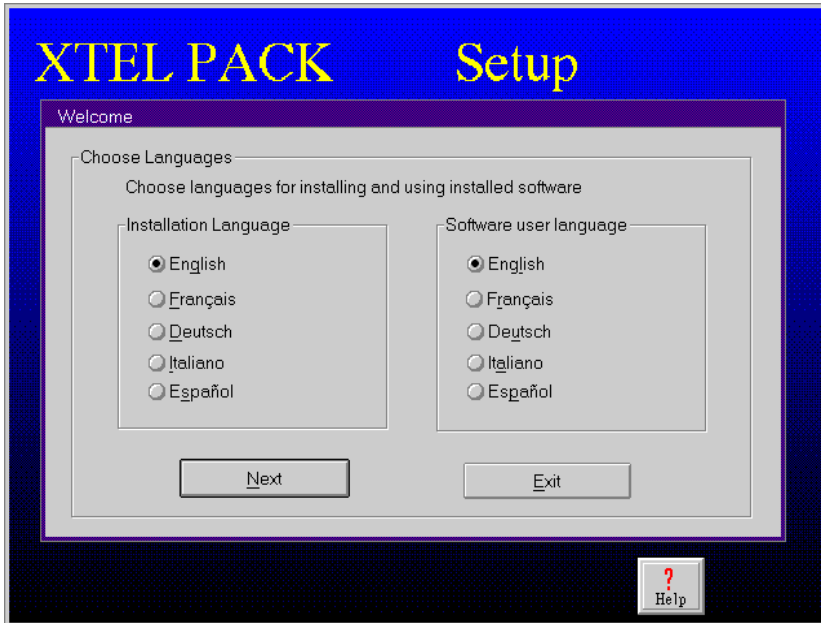
REMINDER:

The V6.1 software range is compatible with the following systems : OS/2 version 2.1, 3.0 WARP Red and 3.0 WARP Blue and 4.0.

Follow these instructions:

- open a full-screen OS/2 window,
- insert installation disk 1/n or the CD-ROM in its drive,
- for a diskette, enter the **a:/setup** command
or for a CD-ROM, enter **<CD-ROM logic unit>:/setup** (e.g. e:/setup).

An initial screen appears while the installation software is being loaded.



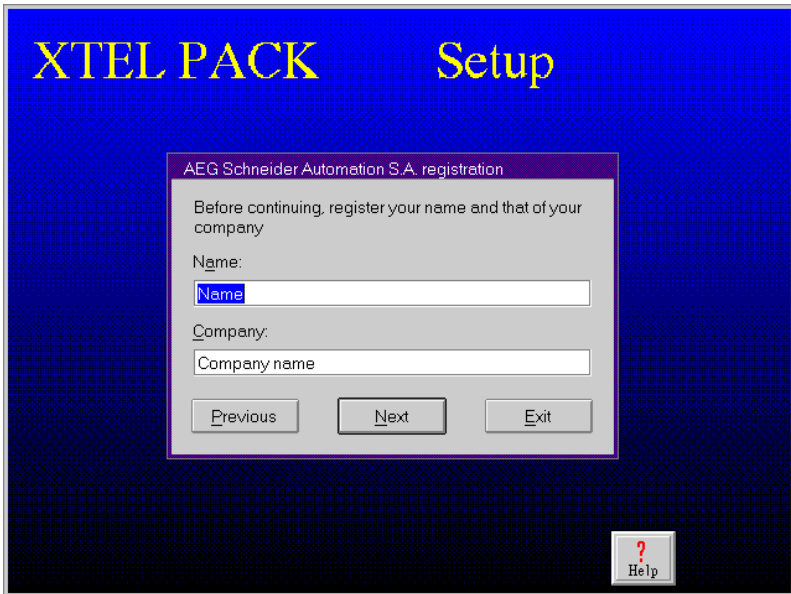
Select the software installation language and the operating language from the proposed languages.

The installation language is used for all communication and any error messages occurring in the course of the installation.

The operating language will be the language in which the software will subsequently be used.

These selections are made only once, during the first installation, and are valid for all programs in the package. At the next installation, this selection will be automatically proposed as the default selection.

- **Next** is used to continue the installation after the languages have been selected.
- **Quit** is used to abort the installation.
- **Help** displays a contextual help window on the current screen

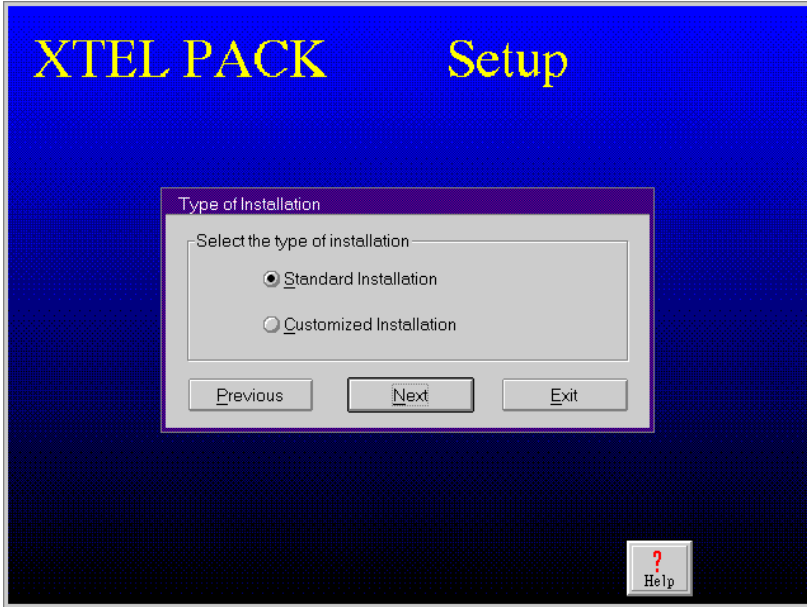


Enter the user and company names to identify the station user. It is only possible to continue the installation if the two fields are filled in.

If the installation software has already been run on the station, the fields already contain by default the values which were previously entered.

- **Previous** is used to return to the preceding screen.
- **Next** is used to continue installation.
- **Quit** is used to abort the installation.
- **Help** displays a contextual help window on the current screen

As these buttons are common to all the installation screens, they will not be described again.



This screen is used to select the type of installation:

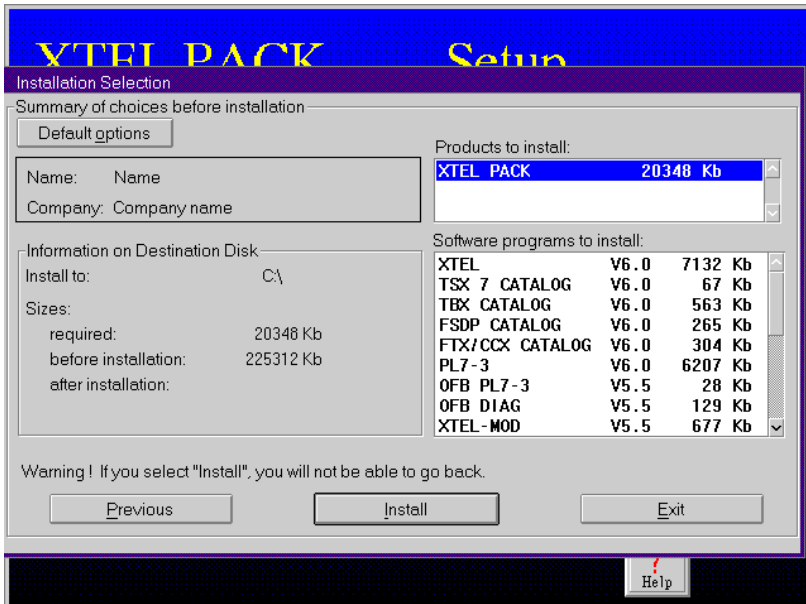
- **Standard installation** this type of installation is selected by default. If the default selection does not contain any products (key missing or empty), this type of installation is not permitted (the option is grayed out).
- **Custom installation** is used to customize the installation by choosing target disks and the programs to be installed.

2.2-3 Standard installation

Standard installation simplifies installation by proposing default parameters. This type of installation is only possible when the programs to be installed and the rights of use are present in the corresponding protection key module.

The installation software runs a series of tests on the target machine and displays a summary selection screen:

- analysis of the available space on the target disk and check that some programs are not already installed.
- analysis of the rights of use on the protection key module.



This screen consists of several zones:

- a zone showing the user's identity : Name and Company
- a target disk information zone giving the name of the disk, the memory size required to install the programs, the space available before and after installation.
- a zone showing the products selected, i.e. a list of the products, each with their version and the space they occupy. The total memory space occupied by all the selected products.

This screen contains the following actions:

- **Default options** displays windows summarizing the default parameters for the communication drivers to be installed.

The OS/2 Uni-Telway driver parameter screen displays the communication port which has been selected, the baudrate, the basic address, the number of addresses used and the address selected for the exchange of unsolicited data.

The TSXPC OS/2 terminal port driver parameter screen displays the communication port which has been selected and the baud rate.

The parameters of these two screens cannot be modified before installation. For information on how to modify them after installation, see section 4.

- **Previous** returns to the previous screen.
- **Install** launches the installation of the selected software. Pressing this key makes it impossible to change the selections made or to stop the installation. If you activate this key, follow the instructions given on the screen.
- **Quit** aborts the installation.

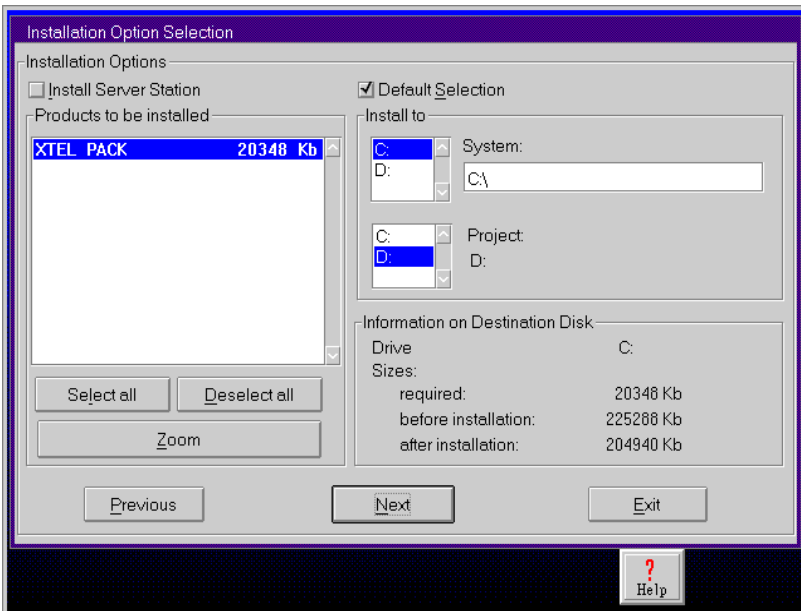
2.2-4 Custom installation

The user can specify the logic disk, the target directories and the list of products selected.

As with the standard installation, the installation software runs a series of tests on the target machine and displays a summary selection screen:

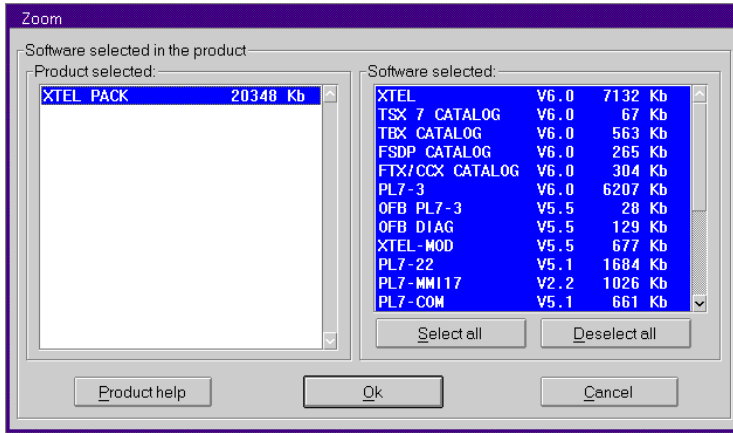
- analysis of the available space on the target disk and check that some programs are not already installed.
- analysis of the rights of use on the protection key module.

The installation option selection screen appears :



This screen consists of several zones:

- a zone for the user to select the disk drive and the target directory of the programs and application project.
- an information zone on the software target disk giving the name of the logic disk, the memory size required by the installation, and the space available before and after installation. If there is insufficient space, the user is automatically informed by a warning message.
- a zone giving details of the products to be installed. Two action buttons are used to select or deselect all the products displayed. Clicking the Zoom button displays a screen listing the programs in the selected package.



This screen is divided into two zones:

- the left-hand side shows the product selected and the space it occupies.
 - the right-hand side lists all the programs in the product and the space they occupy.
- Two buttons are used to select or deselect all the programs displayed.

The user can modify this selection list by clicking on the program to be deselected in order to specify the programs to be installed. Help is available on each selected program by clicking the **Product Help** button.

The following actions are also available on the **installation option selection** screen:

- **Installation on server station** see section 3
- **Default selection** is used to return to a default parameters selection : logic disk, directory and list of programs to install.
- **Previous** returns to the previous screen.
- **Next** continues the installation.
- **Quit** aborts the installation in progress.

The screen which follows the selection screen gives a summary of the choices before installation. It is identical to that in standard installation. It displays all of the choices made from the beginning of the installation.

The **Install** button initiates the installation of the programs and makes it impossible to change the selections already made or to stop the installation. Follow the instructions on screen.

At the end of the installation, a configuration check is run on the programs installed on the station.

If the product contains update diskettes, these should be installed ([a:]setup command).

2.2-5 Transferring the Rights of Use

The installed programs can only be used when the station contains the rights of use, i.e. in a hardware key module inserted in one of the key slots, in a keyholder or on the hard disk.

The user is strongly advised to use the rights of use on the hard disk, transferred there from a hardware working or diskette key module.

1. Transferring the rights of use from the hardware key modules

If this assembly contains **one or more update key modules** (TXT RK ...)

In addition to the incremental key modules, you must also have the working key module* of the station with the V4x programs and its backup key module. You must then use all these keys to form a new **working key module** and a **backup key module**. To do this :

- insert the V4x working and V4x backup key modules in slots A and B of the station or of the key module holder.
- Start Key Manager : open **XTEL USER** in the **Telemecanique** folder.
Enter the user identification (**XTEL** by default) and the password (**XTEL** by default).
- Select **Keymgr** in the menu bar and click on **Keymgr** in the list. The XTEL : Keymgr screen is displayed on screen.
- restore the rights of use (**Restore** action in the **Action** menu) from the backup key in the working key module.
Result : The working key module then becomes the station's original key module and the backup key module becomes an empty key module.
- leave the original key module in position.
- insert the update key module in the available slot, select **Read** action then select and confirm **Increment** action.
Result : The original key module now contains the rights of use and the update key module becomes an empty key module.
- back up (**Backup** action) the original key module in one of the empty key modules.
Result : The original key module becomes the working key module and the empty key module becomes the backup key module.
- keep the backup key module in a safe place.
- transfer the rights of use (**Transfer** action) to the hard disk.
The programs installed on the station can now be run.

***Note** : if the programs were already running with the rights of use on the hard disk, you have to redefine the **working key module** from the **backup working key module**. To do this, insert the **backup working key module** in the slot and transfer the hard disk rights of use to this key module (**Transfer** action).

If this assembly contains a **product key module** (TXT L ..., TXT P ...)

In this case, you must have the working key module* of the station and its backup key module. You must then use all these keys to form a new **working key module** containing the rights of use and a **backup key module**. To do this :

- insert the working and backup key modules in slots A and B of the station or keyholder.
- restore the rights (**Restore** action) from the backup key in the working key module.
Result : The working key module then becomes the station's original key module and the backup key module becomes an empty key module.
- leave the original key module in position.
- insert the V61 key module in place of the empty key module, select **Read** action, then select the rights of use on this key module and transfer them (**Transfer** action) into the original key module,
Result : The original key module contains the V61 rights of use and the update key module becomes an empty key module.
- back up (**Backup** action) the original V61 key module in one of the empty key modules.
Result : The original key module then becomes the station's working key module and the empty key module becomes the backup key module.
- keep the backup key module in a safe place.
- transfer the rights of use (**Transfer** action) to the hard disk.
The programs installed on the station can now be run.

2. Transferring the rights of use from the diskette key modules

Warning : use these diskettes with the write-protect tab unlocked.

Before using the diskette key module, a backup copy should be made.

Backup copy :

- Take a formatted blank diskette.
- Insert the diskette key module in drive A of the PC.
- Open a window OS/2 and type **DISKCOPY A : A :** and press **Enter** to confirm.
Follow the instructions on the screen (source diskette = original key module diskette; target diskette = formatted blank diskette).
- When the screen indicates "other copy (Y/N)" type **N** and confirm with **Enter**.
- The backup diskette which has been created must be kept in a safe place.

***Note** : if the programs were already running with the rights of use on the hard disk, you have to redefine the **working key module** from the **backup working key module**. To do this, insert the **backup working key module** in the slot and transfer the hard disk rights of use to this key module (**Transfer** action).

Transferring rights of use to the hard disk

- Insert the original diskette key module in the diskette drive.
- Start Key Manager : open **XTEL USER** in the **Telemecanique** folder.
Enter the user identification (**XTEL** by default) and the password (**XTEL** by default).
- Select **Keymgr** in the menu bar and click on Keymgr in the list. The XTEL : Keymgr screen is displayed.
- Select **Action** in the **XTEL : Keymgr** menu bar.
If the **Transfer** option is still grayed out, select **Search diskette** and click **Action** again.
- Select **Transfer** then **Diskette to hard disk**.
When a window appears with the list of rights of use to be transferred, press OK.
- Once the transfer has been carried out, the software installed on the station can be run.
- If the rights of use are lost from the hard disk, take the backup diskette and perform the operation again from point 2. "Transfer rights of use from diskette key modules".

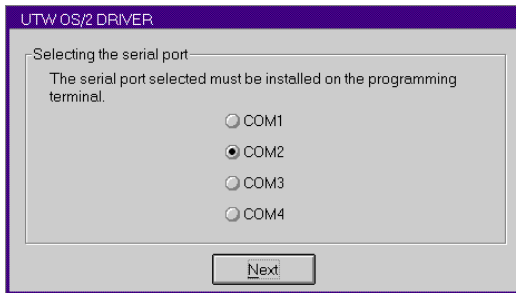
3. Displaying the rights of use

The rights of use present on the hard disk cannot be seen in the Key Manager window, a printout of the rights must be requested. Check the "Print to file" option and then display the "...\xprosys\RIGHTS.TXT" file to view all the existing rights of use on the hard disk.

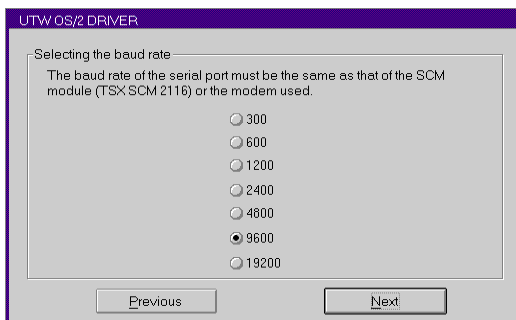
2.3 Installing and setting parameters for communication drivers

If TSX PC (PC/PLC terminal port) and/or OS/2 UTW (Uni-Telway on PC terminal port) communication drivers are selected from the list of programs to be installed, their operating parameters must be defined at the end of installation. A series of dialog boxes is used to set the various parameters.

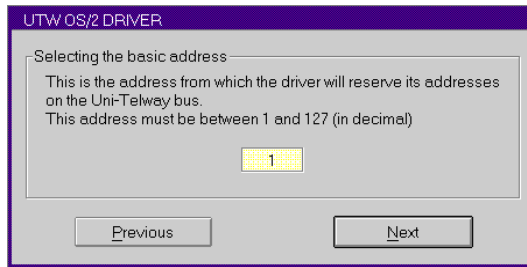
2.3-1 OS/2 UTW Driver



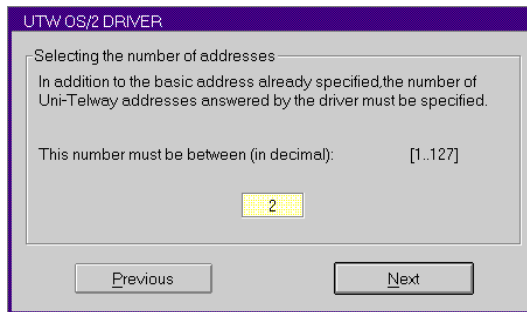
This screen is used to select the serial port for use by the UNI-TELWAY driver. When an FTX 507 terminal is used, select COM1 for use with the MODEM function; otherwise select COM2.



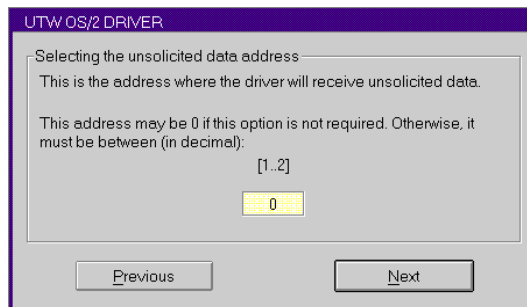
This screen is used to specify the baud rate of the serial port, which must be the same as that of the UNI-TELWAY bus or MODEM when a MODEM is used.



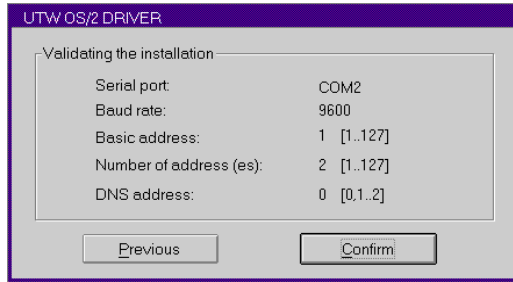
This screen is used to select the base address from which the driver will reserve its addresses on the UNI-TELWAY bus.



This screen is used to select the number of consecutive addresses following the base address which the driver must answer.

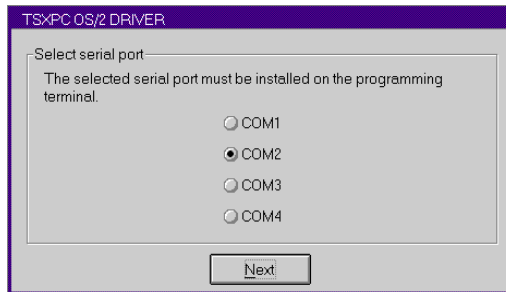


This screen is used to select the address which the driver will use to receive unsolicited data.

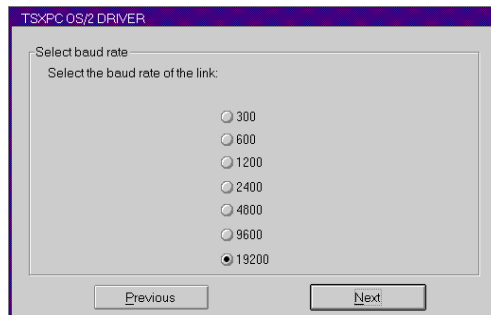


This screen summarizes all of the selected parameters and enables the user to confirm the installation of the driver.

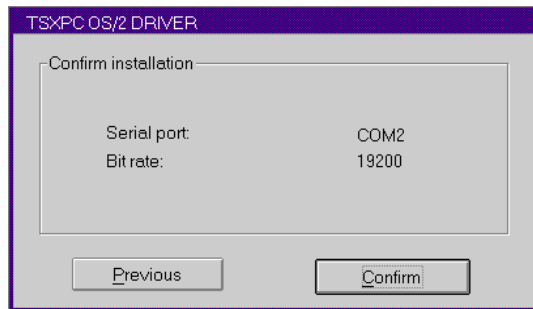
2.3-2 TSX PC Driver



This screen is used to select the serial port for use by the terminal port driver. When an FTX 507 terminal is used, COM2 must be selected.



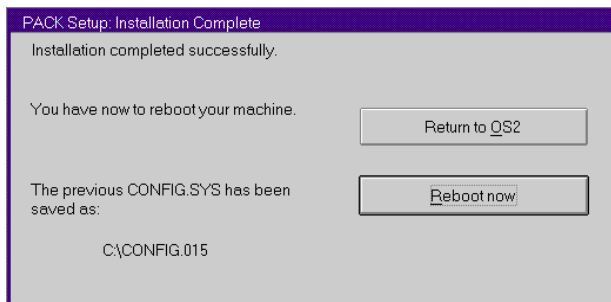
This screen is used to select the baud rate of the serial port.



This screen summarizes all of the selected parameters and enables the user to launch the installation of the driver.

At the end of installation, the user can return to OS/2 and reinitialize the station:

- **Return to OS/2** ends the installation and returns to the OS/2 desktop. Installation of the programs and drivers will **only take effect** when the station is next restarted.
- **Reinitialize now** ends the installation and immediately reboots the station in order to take into account the newly installed programs and drivers.



2.4 Updating software

If the station is already equipped with X-TEL workshop software, the installation proceeds to update it.

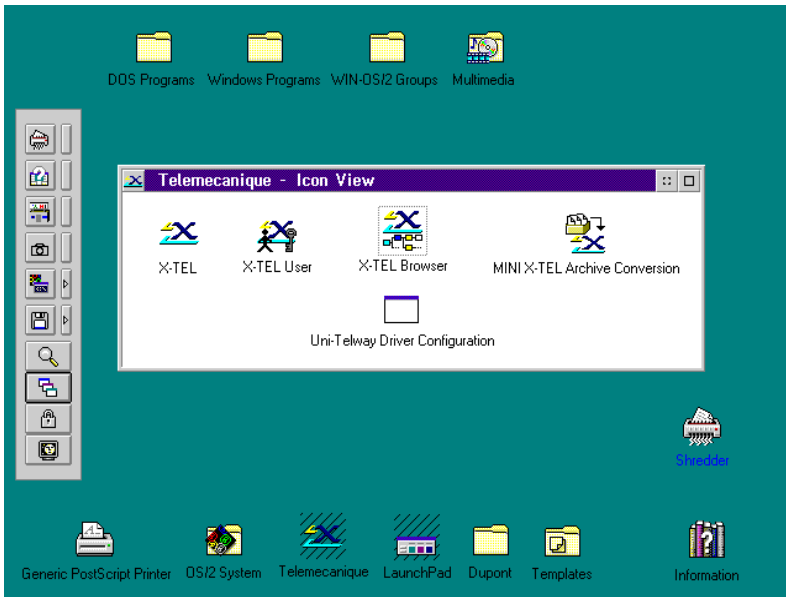
An "Update" warning in the top right-hand corner of the installation option selection screen informs the user of this operation. The selected software is automatically installed in place of that already on the station.

A function non regression check is performed before the installation option selection screen is displayed. If a software version previous to that present on the station is found in any of the software selected for installation, a dialog box appears, suggesting that the user either retains the software on the station or replaces it with the one in the package.

2.5 Access and initialization command

At start-up, the operating system displays the desktop with its contents represented by icons.

Click on the Telemecanique icon to open the appropriate window which contains the various X-TEL applications.



3.1 Section reserved for the network administrator

Installation on a server makes it possible to install X-TEL on a disk which can be accessed by various stations and then to use X-TEL from the client stations via the shared disk. Installation on the client station does not require diskettes.

To do this, the user must have full knowledge of the network architecture.

• Network software supported

- Network with a disk manager.
- Network with client software under OS/2.
- Network which manages the access rights by user or user group.
- Network offering an NDIS interface if coexistence with ETHWAY is required.

LAN MANAGER, LAN SERVER, NOVELL, LANTASTIC and NFS software have the required characteristics.

• Recommended client stations

- PC compatible with 486 processor.
- RAM memory: minimum 12 Mb for X-TEL and network software .
- **OS/2 installed on drive C:**

• Access rights for XPROSYS

- 3 user groups:

GRU1 : The network administrators which assign access and resources.

GRU2 : The X-TEL administrators which have the right to modify the versions of the installed X-TEL tools.

GRU3 : The X-TEL clients using the X-TEL tools which have been installed.

- 2 file groups:

GRF1 : Read only files (RXA).

GRF2 : Read/Write files (RWCDXA).

The table below shows the rights to be assigned to each directory (eg. LANMANAGER).

By directory we mean a directory, its sub-directories and the files they contain.

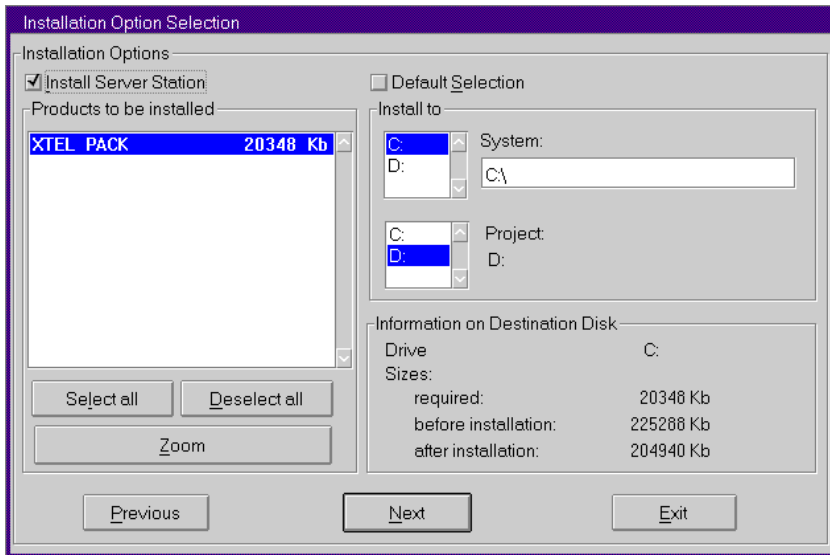
	GRU1	GRU2	GRU3
XPROSYS	GRF2	GRF2	GRF1
XPROSYS\MOD	GRF2	GRF2	GRF2
XPROSYS\MMI	GRF2	GRF2	GRF2
XPROSYS\DLL\SYMBV4\MMI	GRF2	GRF2	GRF2
XPROSYS\DLL\SYMBV4\MMS	GRF2	GRF2	GRF2
XPROSYS\DLL\SYMBV5\MMI	GRF2	GRF2	GRF2
XPROSYS\DLL\SYMBV5\MMS	GRF2	GRF2	GRF2

3.2 Installation of the server station

The installation of the server station is launched in the same way as a normal installation:

- open a full-screen OS/2 window,
- insert the installation disk 1/n or the CD ROM in the drive,
- enter the A:/SETUP command (for a set of diskettes) or **<CD-ROM logic unit>:/setup** (for a CD ROM, eg. e:/setup).

After the initial screen for language selection and user information, select custom installation. The installation option selection screen appears.



- Tick the "Install server station" box in the top left corner of the screen.
- Then launch the installation in the same way as a normal installation (see preceding pages).

3.3 Preparing the client station

The client station must be prepared only when the server is operational and the X-TEL workshop is closed:

- open a full-screen OS/2 window,
- enter the **m:/setup** command (where **m** is the network drive of the server disk).

Diskettes or CD-ROM are not required to prepare the client station as all the programs are on the server station.

Installation copies the necessary communication drivers onto the client station and modifies the CONFIG.SYS file in order to set the access path to the server station.

If tools are added to the server station at a later date, it will be possible to use them on the client station.

