

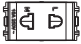




## APPLICATION GUIDE Universal socket

**CAT. NO.**  
3426USMP  
3426UESTMP  
3426UESTZMP  
3426UEST2MP\_RD  
3426UEST2MP\_YL

# Concept

Thank you for choosing **Schneider Electric** Concept socket. To ensure proper application of our product, please read through the following information before installation and use.

This application guide applies to the following products.

Cat. No.	Description
 3426USMP	16A 2Pin Uni So 1M Sized Module Push in
 3426UESTMP	16A 3Pin Uni So 1.5M Size Module Push in
 3426UEST2MP	16A Twin 3Pin Uni So 3M Size Mod Push in
 3426UEST2MP_RD	16A Twin 3Pin Uni So Red 3M Size Mod Pus
 3426UEST2MP_YL	16A Twin 3Pin Uni So YL 3M Size Mod Push in

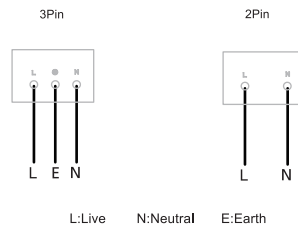
## SPECIFICATIONS

Voltage	: 250V~
Max Current	: 16A
Compliance	: IEC 60884-1

## IMPORTANT NOTE

1. The products must be installed by qualified electricians.
2. Please check your local wiring regulations before installation.
3. Please use only 1.5-4mm<sup>2</sup> rigid Cu for strip gauge.
4. Safekeeping the surround to prevent damage during product installation.
5. Turn off the power supply when you clean the product. Use a soft dry cloth for cleaning the product surface.

## WIRING DIAGRAMS



## MOUNTING INSTRUCTION

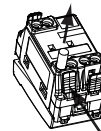
### The process of connecting cables :

1. Cut the sheath of cable to about 12mm length
2. Press the release button with fingers before pushing in the cables.
3. Push in the cables.
4. Release your fingers and finish the operation.

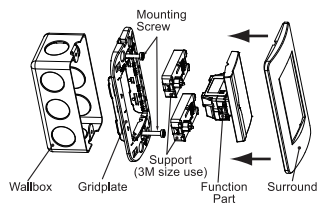


### The process of releasing cables :

1. Press the release button by fingers before pulling out the cables.
2. Pull out the cable; for 4.0 mm<sup>2</sup> cables, please spin the cables before pulling out the cables.

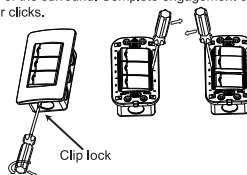


Please refer to the following diagram for proper installation.



### Remarks:

For surround mounting, align the clip locks on the faceplate and press both side of the surround. Complete engagement of the clip locks is indicated by two clear clicks.



Insert a screwdriver into the clip lock, and twist the screwdriver to remove the surround.