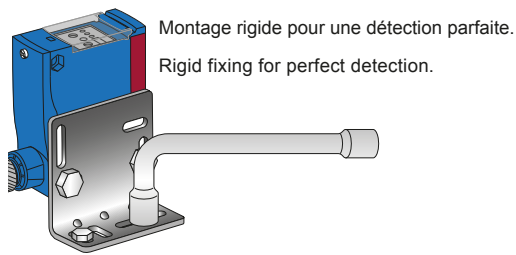
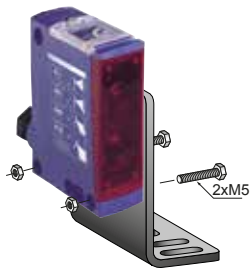


Détecteur photoélectrique (Portée : 11 m)
Photo-electric sensor (Range: 36 ft)

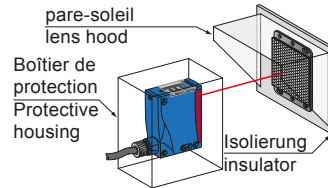


art 962343

Fixation / Fixing



Montage rigide pour une détection parfaite.
Rigid fixing for perfect detection.



Montage en extérieur sous abri, sur un isolant thermique pour éviter givre et condensation sur les parties optiques.

Outdoor mounting with protective cover, on thermal insulator to avoid frost or condensation forming on the optical parts.

Dimensions / Dimensions

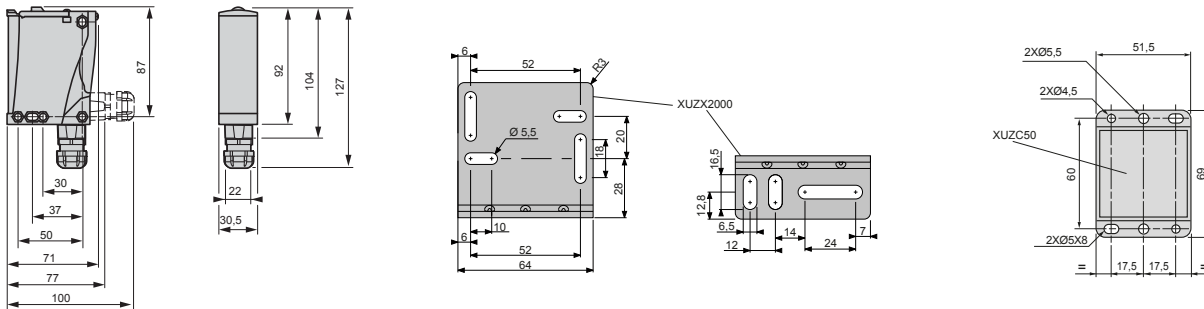
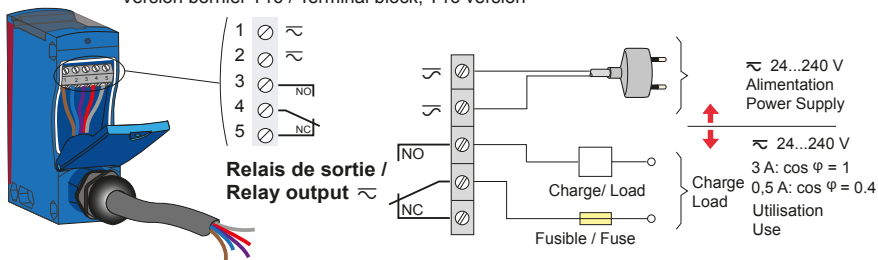
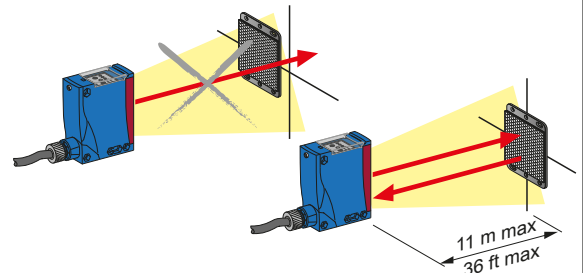


Schéma de câblage / Wiring diagram

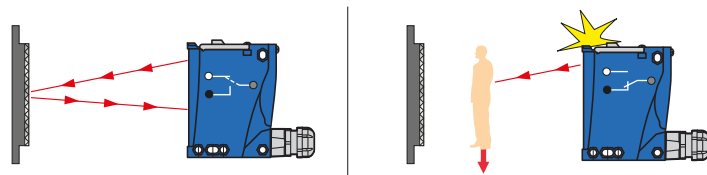
Version bornier T16 / Terminal block, T16 version



Alignement / Alignment



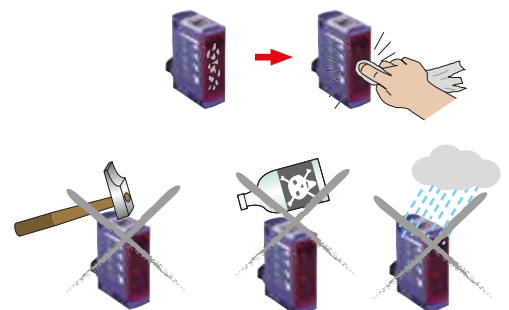
Fonctionnement des contacts du relais / Relay contacts operation



Protections / Protections

Température de fonctionnement : -25...+55 °C /
Operating temperature: -13...131 °F

Degré de protection / Degree of protection: IP65



Signale une présence / Signals a presence

