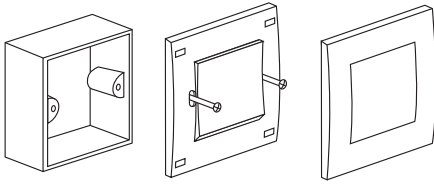
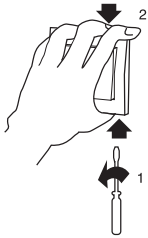


### MOUNTING INSTRUCTION

Please refer to the following diagram for proper installation.



Remarks: For surround mounting, align the clip locks on the faceplate and press firm on the surround. Complete engagement of the clip locks is indicated by a clear "click" sound.



### Application Guide Switches

#### CAT. NO.

KB31_1	KB31
KB32_1	KB32
KB33_1	KB33
KB34_1	KB34

# Vivace


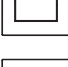
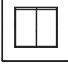

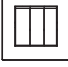
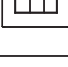
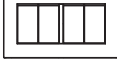
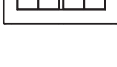
MS18723



## Inside

Thank you for choosing Schneider Electric Vivace Switches. To ensure proper application of our product, please read through the following information before installation and use.

This application guide applies to the following Vivace products.

Cat No.	Description
 KB31_1	16AX 250V 1 Gang 1 Way Switch
 KB31	16AX 250V 1 Gang 2 Way Switch
 KB32_1	16AX 250V 2 Gang 1 Way Switch
 KB32	16AX 250V 2 Gang 2 Way Switch
 KB33_1	16AX 250V 3 Gang 1 Way Switch
 KB33	16AX 250V 3 Gang 2 Way Switch
 KB34_1	16AX 250V 4 Gang 1 Way Switch
 KB34	16AX 250V 4 Gang 2 Way Switch

### SPECIFICATIONS

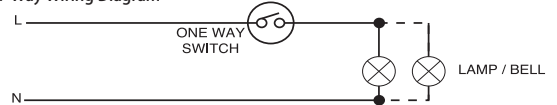
Voltage	: 250VAC
Dimension	: 86mm x 86mm(except KB34_1, KB34), 146mm x 86mm(KB34_1, KB34)
Mounting Centre	: 60.3mm(except KB34_1, KB34)
Compliance	: 120.6mm(KB34_1, KB34) : IEC 60669-1, MS IEC 60669-1, SS 227

### IMPORTANT NOTE

Please check your local wiring regulations before installation.

### WIRING DIAGRAM

#### 1-Way Wiring Diagram



#### 2-Way Wiring Diagram

