



APPLICATION GUIDE USB Socket

CAT. NO.
KB31USB_WE
KB32USB_WE

Vivace

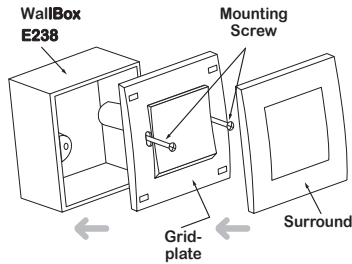
MOUNTING INSTRUCTION

Fixing :

Please refer to the following diagram for proper installation: (Proper wire stripping length: 10-12mm)

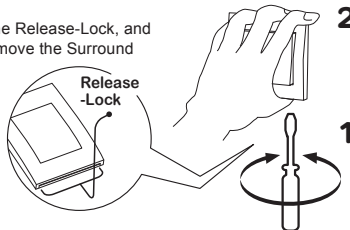
Remarks:

For surround mounting, align the clip locks on the grid plate and press both side of the surround. Complete engagement of the clip locks is indicated by two clear clicks.



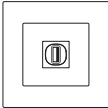
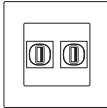
Remove :

Insert a screwdriver into the Release-Lock, and twist the screwdriver to remove the Surround



Thank you for choosing **Schneider Electric VIVACE** Unit. To ensure proper application of our product, please read through the following information before installation and use.

This application guide applies to the following products :

	Cat. No. :	Description :
	1 KB31USB_WE	1 x 2.1A USB Socket
	2 KB32USB_WE	2 x 2.1A USB Socket

SPECIFICATIONS

Input Voltage	100 – 240V~
Input Frequency	50 /60 Hz
Input Current	0.45A(1G)/0.5A(2G)
Output Voltage	5V DC
Output Current	2.1A max(1G)/4.2A max(2G)
Panel Dimension	87mm x87mm
Mounting Centre	60.3mm
Compliance	IEC 60950-1
Operation Temperature	Room Temperature
Protection	Over heat, over current, over voltage

IMPORTANT NOTE

1. The products must be installed by qualified electricians
2. Please check your local wiring regulations before installation
3. Suggest to install product with 47mm depth wallbox
4. Suitable for mounting on concrete or other non-combustible surface only
5. Safekeeping the surround to prevent damage during product installation, Don't disassemble the USB module
6. Turn off the power supply when you clean the product. Use a soft cloth or tissue paper to wipe off the dust and dirt on the surface. Avoid using corrosive chemicals
7. Kindly ensure your device's Battery Charging Specification suitable with this USB Charger before charging
8. Do not insert metal objects into USB Charger
9. User will feel some heat at the product surface when charging is in progress
10. A power supply cord for connection to the AC MAINS SUPPLY shall be of conductors type as below specifications: AWG 18-12, 10A Max.,250 Va.c
11. For PERMANENTLY CONNECTED EQUIPMENT, a readily accessible disconnect device shall be incorporated in the building installation wiring
12. Indoor use only

WIRING DIAGRAMS

