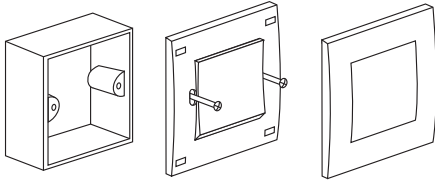
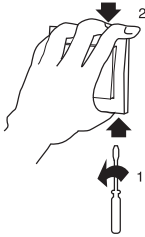


### MOUNTING INSTRUCTION

Please refer to the following diagram for proper installation.



Remarks: For surround mounting, align the clip locks on the faceplate and press firm on the surround. Complete engagement of the clip locks is indicated by a clear "click" sound.



IS18094



### Application Guide Bell Press Switch

CAT. NO.  
KB31BPB  
KB31BP  
KB32BP

# Vivace

## Inside

Thank you for choosing **Schneider Electric Vivace Bell Press Switch**. Please read the following important information before installation and use.

This application guide applies to the following Vivace products.

Cat No.	Description
KB31BPB	10A 250V Bell Press Switch
KB31BP	10A 250V 1 Gang Press Switch
KB32BP	10A 250V 2 Gang Press Switch

### SPECIFICATIONS

Voltage	: 250VAC
Dimension	: 86mm x 86mm
Mounting Centre	: 60.3mm
Compliance	: IEC60669-1, MS IEC 60669-1, SS227

### IMPORTANT NOTE

Please check your local wiring regulations before installation.

### WIRING DIAGRAMS

