

Thank you for choosing **Schneider Electric** Affle Plus products. To ensure proper application of our product, please read through the following information before installation and use.

This application guide applies to the following products.

Cat. No.	Description
A3G31B1A	10AX 250V 1 Gang 1 Way Switch
A3G31B2A	10AX 250V 1 Gang 2 Way Switch
A3G32B1A	10AX 250V 2 Gang 1 Way Switch
A3G32B2A	10AX 250V 2 Gang 2 Way Switch
A3G33B1A	10AX 250V 3 Gang 1 Way Switch
A3G33B2A	10AX 250V 3 Gang 2 Way Switch
A3G34B1A	10AX 250V 4 Gang 1 Way Switch
A3G34B2A	10AX 250V 4 Gang 2 Way Switch
A3G31B3A	10AX 250V 1 Gang Intermediate Switch
A3G31BBPB	10A 250V 1 Gang Bell Press Switch
A3G31D20N	20A 250V 1 Gang 1 Way Double Pole Switch
A3G32D20N	20A 250V 2 Gang 1 Way Double Pole Switch
A3G31D32N	32A 250V 1 Gang 1 Way Double Pole Switch

SPECIFICATIONS

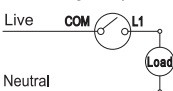
Voltage	: 250V~
Mounting centre	: 60.3mm
Current	: 10A/10AX/20A/32A
Compliance	: IEC 60669-1, BSEN 60669-1, MSIEC 60669-1

IMPORTANT NOTE

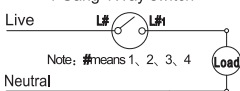
1. The products must be installed by qualified electricians.
2. The wallbox depth should be $\geq 35\text{mm}$.
3. Please check your local wiring regulations before installation.
4. Safekeeping the surround to prevent damage during product installation.
5. Turn off the power supply when you clean the product. Use a soft, slightly-moistened cloth or tissue paper to wipe off the dust and dirt on the surface. Clean with much diluted detergent if necessary but avoid using corrosive chemicals.

WIRING DIAGRAMS

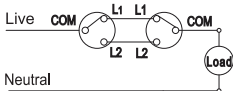
1/2/3 Gang 1Way switch



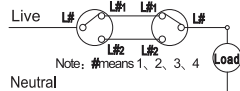
4 Gang 1Way switch



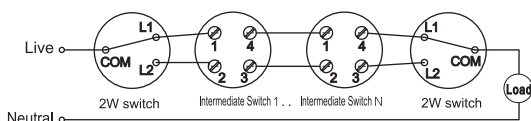
1/2/3 Gang 2Way switch



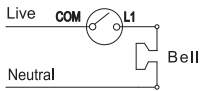
4 Gang 2Way switch



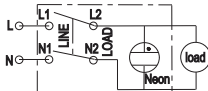
Intermediate Switch



Bell Press Switch

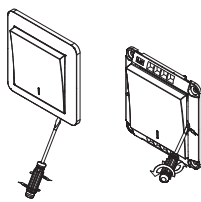
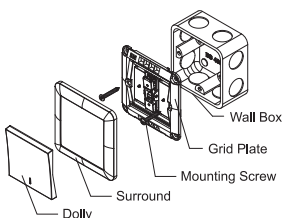


1 Gang 1Way Double Pole Switch



MOUNTING INSTRUCTION

1. Connect the wires to the terminals (recommend to leave 10-12mm bare metal wire) and tighten the terminal screws.
2. Screw the grid plate onto the wall box.
3. Snap the dolly and surround.



Insert a screwdriver into the clip lock, and twist the screwdriver to remove the surround and dolly.

感謝閣下選用 **Schneider Electric** 施耐德電氣 Affle Plus 系列產品。在安裝及使用本產品前，請仔細閱讀內文指示。

此手冊適用於以下產品型號：

型號	摘要
A3G31B1A	10AX 250V 單位單控開關擊連螢光指示
A3G31B2A	10AX 250V 單位雙控開關擊連螢光指示
A3G32B1A	10AX 250V 兩位單控開關擊連螢光指示
A3G32B2A	10AX 250V 兩位雙控開關擊連螢光指示
A3G33B1A	10AX 250V 三位單控開關擊連螢光指示
A3G33B2A	10AX 250V 三位雙控開關擊連螢光指示
A3G34B1A	10AX 250V 四位單控開關擊連螢光指示
A3G34B2A	10AX 250V 四位雙控開關擊連螢光指示
A3G31B3A	10AX 250V 單位中途開關擊連螢光指示
A3G31BBPB	10A 250V 單位門鐘搽手掣
A3G31D20N	20A 250V 單位單控雙極開關擊連指示燈
A3G32D20N	20A 250V 兩位單控雙極開關擊連指示燈
A3G31D32N	32A 250V 單位單控雙極開關擊連指示燈

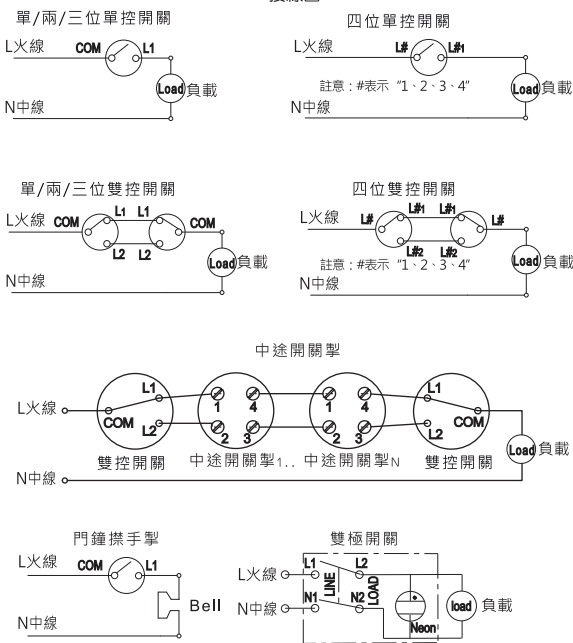
產品規格

工作電壓	: 250V~
安裝中心距	: 60.3mm
額定電流	: 10A/10AX/20A/32A
安全標準	: IEC 60669-1, BS EN 60669-1, MS IEC 60669-1

注意事項

1. 產品安裝須由符合資格的電工完成
2. 請用深度35mm以上的底箱
3. 安裝前請查核是否抵觸當地之有關布線規例
4. 產品安裝期間，請妥善放置與保管面蓋，以防壓傷損壞
5. 清潔時，切記先關上電源，再用輕微濕潤的軟性布料或紙巾抹拭表面的塵埃或臟物，必要時可用極為稀釋的清潔劑，但切忌使用帶有腐蝕性的化學溶液(如：鹼性或酸性洗滌，稀釋劑，汽油，殺蟲劑等)，否則，可能會導致本產品表面開裂或其他故障

接線圖



安裝指南

1. 把電線插入接線端子(建議剝線長度10-12mm)，然後鎖緊螺絲以固定位置;
2. 把內框固定於底箱;
3. 安裝按鈕和面板。

