



CLASS 9013 ALL TYPE "F" DEVICES, Replacement Parts Kits, Adjustment Instructions, and Wiring Diagrams

CLASS 9013 TYPE FHG

Replacement Release Valve 9049 A56
Complete Contact replacement kits
(includes new diaphragm Movable Contact Assemblies
and Stationary Contact Block Assembly)

TYPES 2 thru 19	9998 PC-241
TYPES 22 thru 39	9998 PC-242
TYPES 42 thru 49	9998 PC-241
TYPES 52 thru 59	9998 PC-242

IMPORTANT: THE MAXIMUM ALLOWABLE PRESSURE RATING OF THIS SWITCH IS 220 PSI.

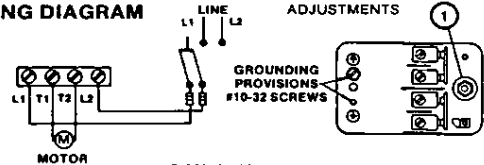


MADE IN USA



65013-005-50D

WIRING DIAGRAM



B 65016 - 001 - 55

RANGE ADJUSTMENT: Turn the range nut (1) down for higher cut-in and cut-out, up for lower cut-in and cut-out.

NOTE: This device is not equipped with adjustable differential.

CAUTION: To avoid damage, do not exceed maximum allowable system pressure. Check switch operation after resetting.

CLASS 9013 TYPE FRG COMPLETE CONTACT REPLACEMENT KITS (Includes New Diaphragm)

Class 9998	PC 288	All 2 Pole Devices
Class 9998	PC 289	All 1 Pole Devices (Except FRG 52-59)
Class 9998	PC 291	FRG 52-59 Devices

IMPORTANT: THE MAX. ALLOWABLE PRESSURE RATING OF THIS SWITCH IS 300 PSI.

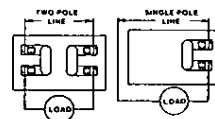


MADE IN USA

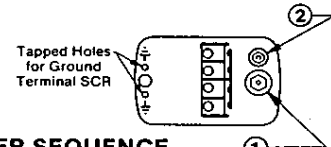


65013-005-98

WIRING DIAGRAM



ADJUSTMENTS



ADJUST IN PROPER SEQUENCE

1. Turn nut 1 down to raise low operating point.
2. Turn nut 2 down to raise high operating point.

CAUTION: TO AVOID DAMAGE DO NOT EXCEED MAX. ALLOWABLE PRESSURE. CHECK SWITCH OPERATION AFTER RESETTING.

CLASS 9013 TYPE FRG FORM H

COMPLETE CONTACT REPLACEMENT KITS (Includes New Diaphragm)

Class 9998	PC 290	All Form H Devices
------------	--------	--------------------

IMPORTANT: THE MAX. ALLOWABLE PRESSURE RATING OF THIS SWITCH IS 300 PSI.

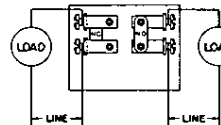


MADE IN USA

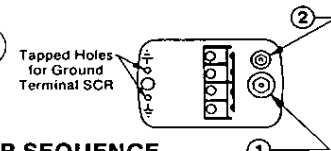


65013-005-99

WIRING DIAGRAM



ADJUSTMENTS



ADJUST IN PROPER SEQUENCE

1. Turn nut 1 down to raise low operating point.
2. Turn nut 2 down to raise high operating point.

CAUTION: TO AVOID DAMAGE DO NOT EXCEED MAX. ALLOWABLE PRESSURE. CHECK SWITCH OPERATION AFTER RESETTING.



CLASS 9013 ALL TYPE "F" DEVICES; Replacement Parts Kits, Adjustment Instructions, and Wiring Diagrams

CLASS 9013 TYPE FSG
Complete Contact replacement kit
(includes new diaphragm) 9998 PC-241

IMPORTANT: This switch does not provide low water cut-off protection.

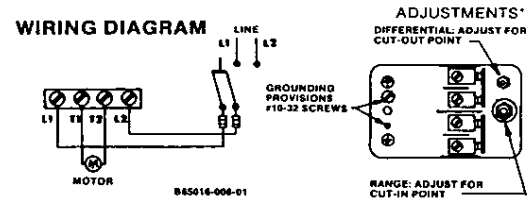
The maximum allowable pressure rating of this switch is 220 PSI.

NOTE: If switch turns rapidly on and off, check air volume control. For smooth operation, tank must have ample air cushion.



MADE IN USA

65013-005-39B



***ADJUST IN PROPER SEQUENCE:**

1. CUT-IN: Turn range nut down for higher cut-in pressure, or up for lower cut-in.
2. CUT-OUT: Turn differential nut down for higher cut-out pressure, or up for lower cut-out.

CAUTION: To avoid damage, do not exceed maximum allowable system pressure. Check switch operation after re-setting.

CLASS 9013 TYPE FSG FORM M4
Complete Contact replacement kit
(includes new diaphragm) 9998 PC-241

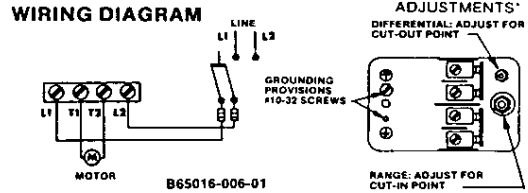
Low water or loss of system pressure will cause pump to cut-off. After fault in system has been corrected, move lever to "start" and hold until pressure builds up enough to keep contacts closed.

IMPORTANT: The maximum allowable pressure rating of this switch is 220 PSI.



MADE IN USA

65013-005-40B



***ADJUST IN PROPER SEQUENCE:**

1. CUT-IN: Turn range nut down for higher cut-in pressure, or up for lower cut-in.
2. CUT-OUT: Turn differential nut down for higher cut-out pressure, or up for lower cut-out.

CAUTION: To avoid damage, do not exceed maximum allowable system pressure. Check switch operation after re-setting.

CLASS 9013 TYPE FYG
Complete Contact replacement kit
(includes new diaphragm) 9998 PC-242

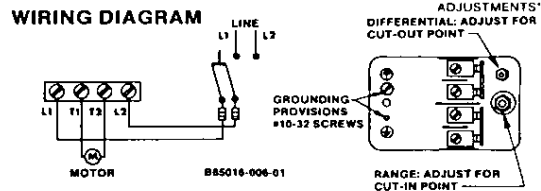
IMPORTANT: The maximum allowable pressure rating of this switch is 220 PSI.

NOTE: If switch turns rapidly on and off, check air volume control. For smooth operation, tank must have ample air cushion.



MADE IN USA

65013-005-41B



***ADJUST IN PROPER SEQUENCE:**

1. CUT-IN: Turn range nut down for higher cut-in pressure, or up for lower cut-in.
2. CUT-OUT: Turn differential nut down for higher cut-out pressure, or up for lower cut-out.

CAUTION: To avoid damage, do not exceed maximum allowable system pressure. Check switch operation after re-setting.