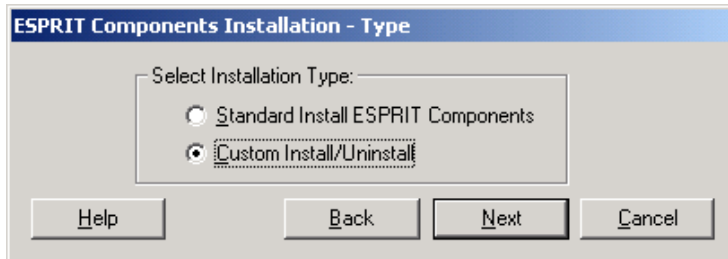


## End user information N°6

### 1.1 Installation

The "Network Server" mode can be installed only under Windows XP or 2000 Pro.  
At installation of the ESPRIT software, select "Custom Install/Uninstall".



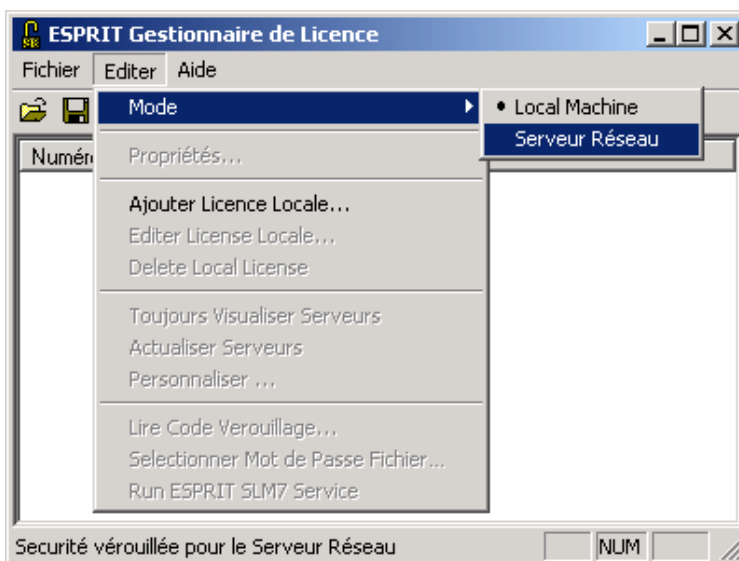
On the "ESPRIT Components Installation – Customize" page, select installation of:

- ESPRIT package,
- Licence Server Package.

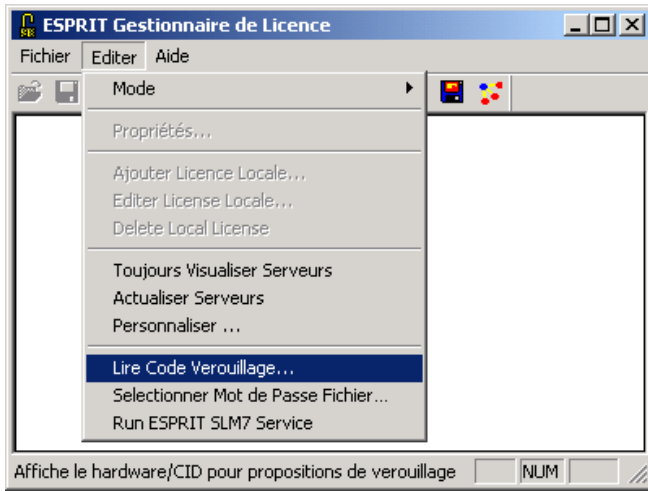
Then follow the install programme instructions.

### 1.2 Determining locking criteria

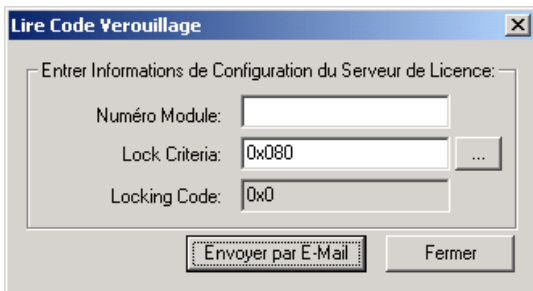
Start the "ESPRIT Licence Manager" programme via the "Start\Programmes\ESPRIT 2003\" menu.  
Activate the "Network Server" (Serveur Réseau) mode.




Start the locking code read module.

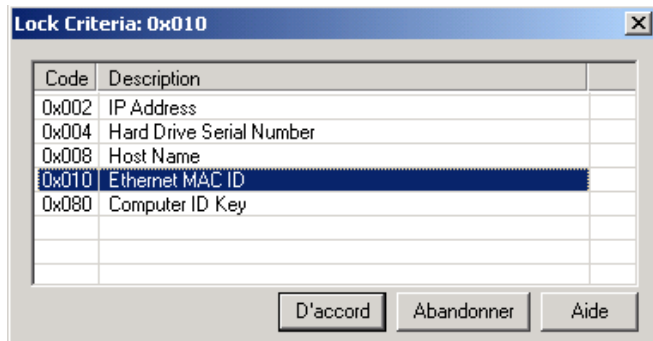


Activate the "lock criteria" configuration button.




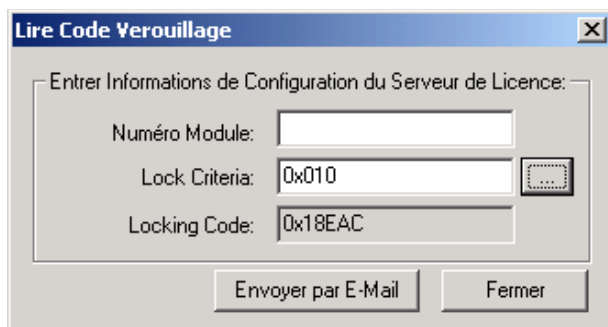
Select "Ethernet MAC ID" then validate with "D'accord" (OK).

	<b>CAUTION</b>
<b>NUM recommends using "Ethernet MAC ID" as the locking criterion. This criterion is the only one that allows reuse of the password in the event of complete re-installation of the system (with the same hardware). However if there is no network card or no card connection, use of the "Hard Drive Serial Number" criterion is authorised.</b>	



The locking code is returned in the "Locking Code:" display field.

	<b>CAUTION</b>
<b>NUM recommends using "Ethernet MAC ID" as the locking criterion. This criterion is the only one that allows reuse of the password in the event of complete re-installation of the system (with the same hardware). However if there is no network card or no card connection, use of the "Hard Drive Serial Number" criterion is authorised.</b>	



You can now quit the "ESPRIT Licence Manager" programme.

### 1.3 Obtaining the password file

You must then send NUM the following information in order to obtain a "\*.pwd" file with the validation parameters:

- Affaire numbers of the CNC,
- Lock Criteria 0x010 for Ethernet MAC-Id,
- Locking Code (0x18EAC in our example).

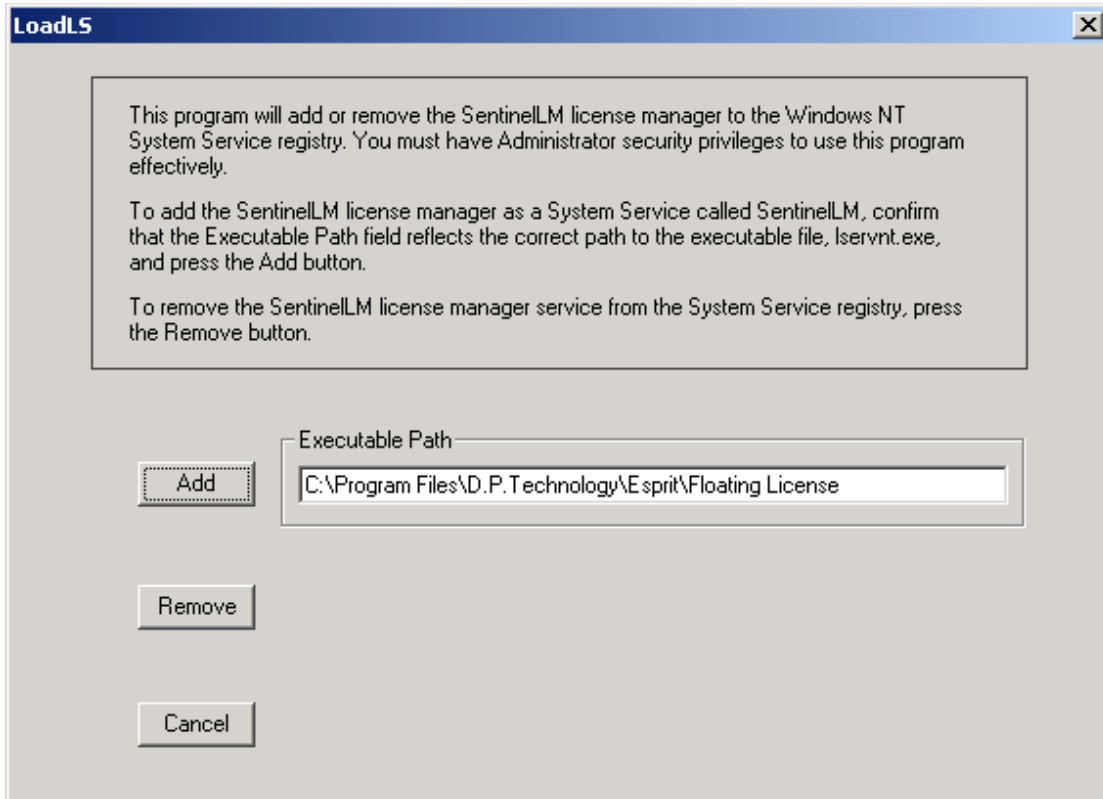
### 1.4 Installing the license server

Once the "\*.pwd" file is available:

Copy the "\*.pwd" file into directory ...:\Program Files\D.P.Technology\Esprit\Floating License.

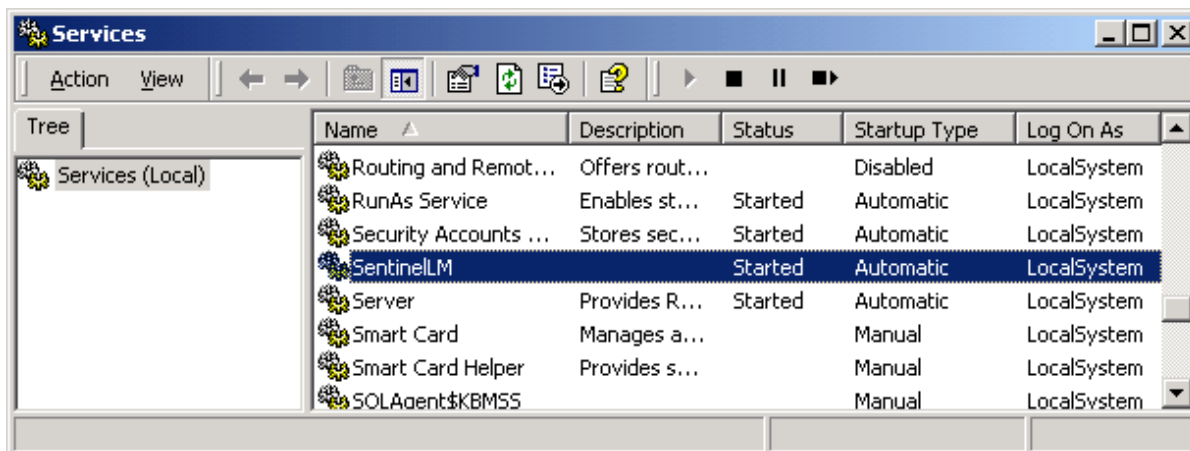
Make a copy of this file and rename it "Iservrc" with no extension.

Start the "loadls.exe" programme then hit "Add".



Quit the programme and restart the machine.

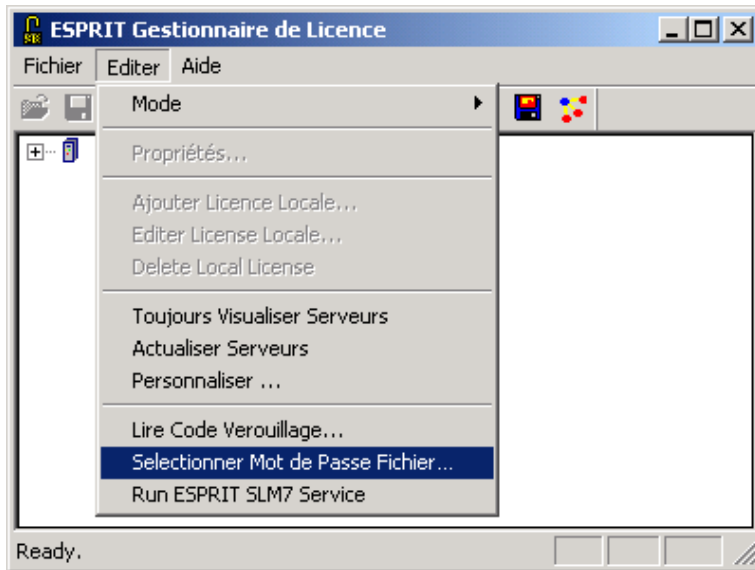
Once the machine has restarted, check that the "SentinelLM" service starts automatically. "Settings\Control Panel Administration tools\Services".



The license server is now installed.

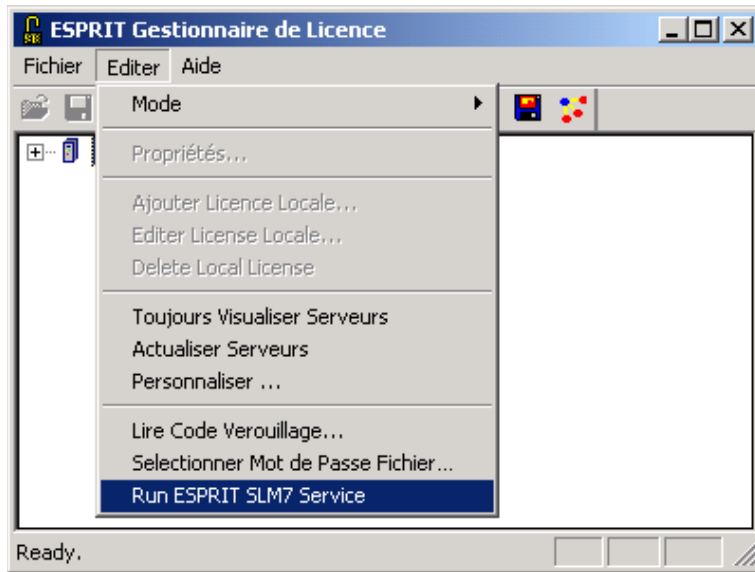
## 1.5 Configuring the ESPRIT client

Start the "ESPRIT Licence Manager" programme via the "Start\Programmes\ESPRIT 2003\" menu. This programme should run in "Network Server" (Serveur Réseau) mode. Select the "Selectionner Mot de passe Fichier ..." (select password file...) menu.

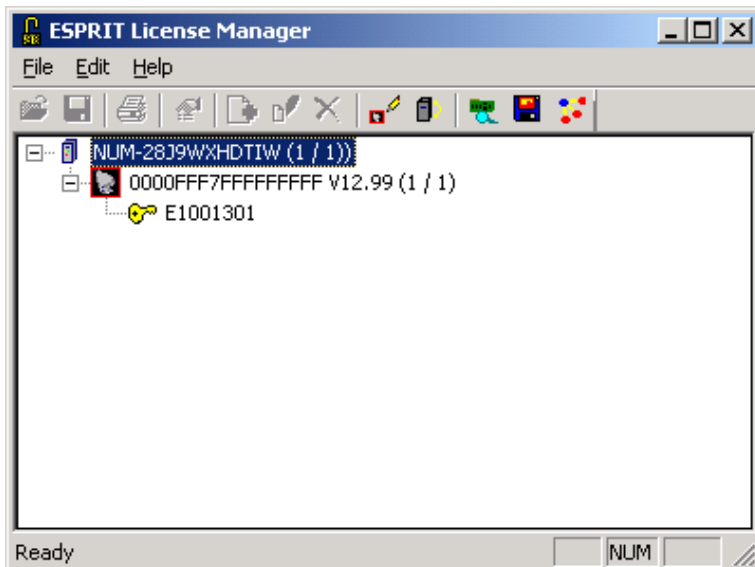


Select the "\*.pwd" password file you were sent and validate this file as the Password file.

Select the "RunESPRIT SLM7 Service" menu.

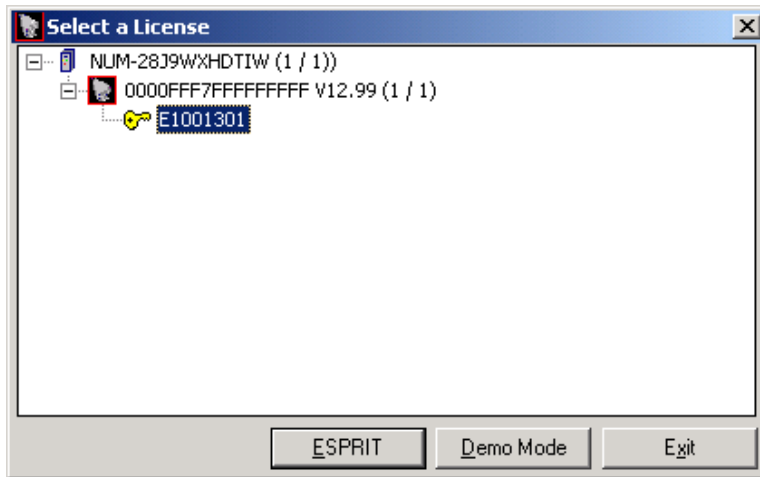


ESPRIT Licence Manager displays "Ready". The protection system is now activated.



## 1.6 Starting the ESPRIT software

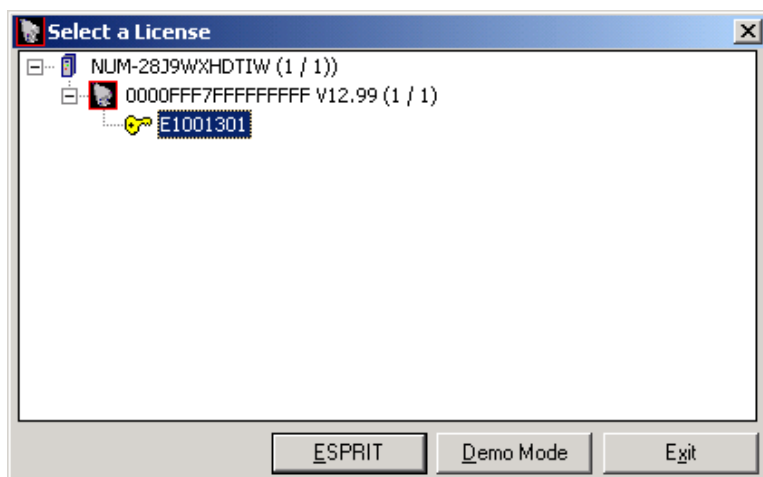
Activating the control buttons (Edit profile, graphic simulation or CAM functions) on the NUM HMI calls up the following page.



Select the valid key (E1001301 in our example) and activate the "ESPRIT" button to start.

## 1.6 Démarrage du logiciel ESPRIT

L'activation des boutons de commande (Fonctions Edition de profil, Simulation graphique ou FAO) dans NUM HMI, provoque l'affichage de la page suivante.



Sélectionner la clé valide (E1001301 dans notre exemple) et Activer le bouton « ESPRIT » pour démarrer.



01



35009103 01