

## CLASS 9423, TYPES M2 and M7 MECHANICAL INTERLOCKING MECHANISMS FOR MULTI-DOOR ENCLOSURES

### GENERAL INFORMATION

1. The Class 9423, Type M2 and M7 kits have been designed for use with Class 9423, Type M6 or M8 Vault Handle Door Closing Mechanisms to interlock all enclosure doors with the MASTER DOOR.
2. The Class 9423, Type M7 Overhead Interlocking Raising Lever Assembly is:
  - Used with the master door to interlock the master door with the auxiliary door(s) of a multi-door enclosure,  
In this application one Type M7 kit is actuated by the rollers on the upper locking bar of the M-6 or M-8 Mechanism. A 1/4" diameter rod (furnished by customer) connects to this Type M7 kit and runs horizontally across the top of the enclosure and ties into the other Type M7 kit(s).
  - Used to connect the overhead interlocking rod of any auxiliary door with the master door,
  - Used to control the action of the Type M2 mechanical interlock used on auxiliary doors.
3. Where the spacing between M-7 Raising Lever Assemblies exceeds 36 inches, an additional Type M7 kit should be used to support the 1/4" overhead operating rod. (See Figure 2.)
4. The Class 9423, Type M2 Mechanical Interlock for Auxiliary Doors is used with the Type M7 raising lever assembly to interlock either the Type M6 or M8 Vault Handle Mechanisms on auxiliary doors of multi-door enclosures with the master door.

### ENCLOSURE CONSTRUCTION

1. Reference should be made to Figure 2 of this Instruction Sheet and to the Instruction Sheet for the Class 9423, Type M6 or M8 Door Closing Mechanism, 30072-303-29 or 30072-304-13, for basic enclosure construction dimensions.
2. The location of the mounting holes for the support bracket, item 15, which is secured to the enclosure channel by (2) screws, item 21, is shown in Figure 3 for either a right hand or left hand hinged door.
3. The location of the raising lever assemblies as well as enclosure construction details is shown in Figure 2.
4. An optional defeater hole, "B", may be drilled to provide for the opening of an auxiliary door with the master door closed and the disconnect switch in the "ON" position. (See Figure 3.)

### ASSEMBLY DETAILS

Assemble M-7 kit as shown in Figure 1 observing the following:

- The M7 Raising Lever Assembly is mounted behind the top enclosure flange with any combination of door hinging arrangements or channel widths. (See Figure 2.)
- The 1/4" diameter rod which horizontally connects the door interlocking mechanisms is furnished by the user. This rod may be comprised of two or more sections for ease of assembly.

Assemble M-2 kit as shown in Figure 1 observing the following:

- The actuating rod, item 25, is the correct length for an 86" high door opening. Rod lengths for smaller door openings may be obtained by cutting this rod to size as follows:

Rod length - 1/2 door opening height plus 1-1/2".

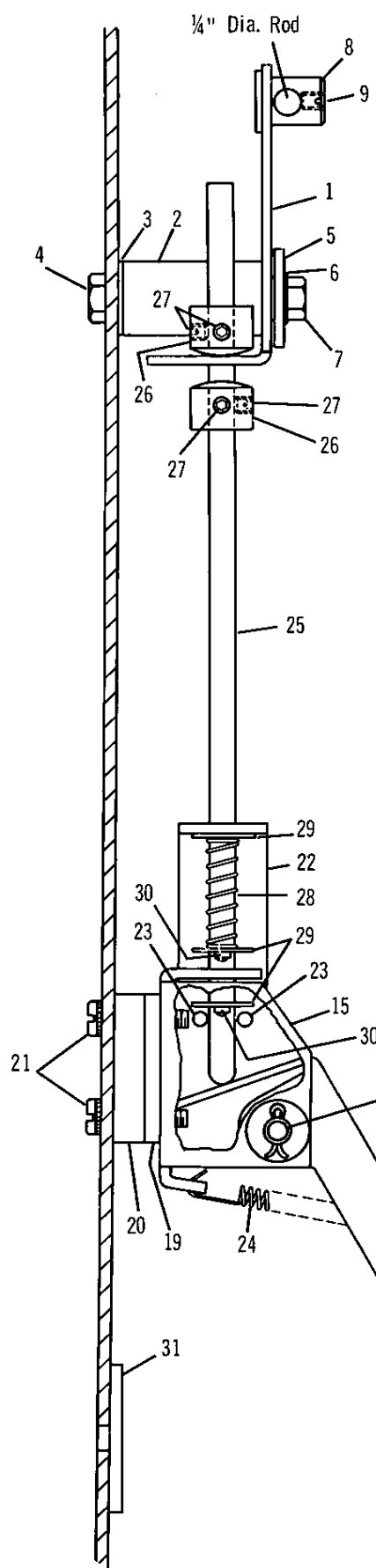
- The actuating rod guide bracket, item 22, is provided with two sets of mounting holes for assembly to support bracket, item 15. Normally, attach rod guide bracket to support bracket using the two lower holes. Additional spring pressure may be obtained from actuating rod spring, item 28, by mounting the bracket using the upper set of holes.
- The M2 kit is mounted to enclosure flange or channel by (2) screws, item 21, through holes "H". (See Figures 1 and 3 for drilling dimensions.) Use both spacers, items 19 and 20, when mounting with a Class 9423, Type M8 Vault Handle Mechanism; use thinner spacer, item 19, only, when mounting with a Class 9423, Type M6 Vault Handle Mechanism.

### ADJUSTMENT PROCEDURE

1. Adjustment of operation should be made after the interlocking mechanisms and the Type M6 or M8 kits are assembled to the enclosure.
2. With all doors open, visually align M-7 Raising Lever Assemblies and secure to 1/4" horizontal rod by tightening set screws, item 9, in pickup posts, item 8. Movement of the 1/4" horizontal rod should cause all Raising Lever Assemblies to operate in parallel.
3. Close and secure master door, making certain that the rollers on the upper locking bar of the M-6 or M-8 Mechanism cause the M-7 raising levers to rotate. Raise each M-2 actuating rod as far as possible and secure in position with upper stop collar. Adjust lower stop collar 1/4" below upper stop collar.
4. Check each M-2 and M-7 Mechanism for proper operation.

Item	Description	Part Number	Qty.	
			M-7	M-2
1	Raising Lever	A30007-149-01	1	
2	Mounting Post	A30007-151-01	1	
3	Gasket	30002-024-01	1	
4	Screw ¼-20x2	21401-20640	1	
5	Washer	23602-11606	1	
6	Lock Washer ¼	23703-00200	1	
7	Nut ¼-20	23001-00200	1	
8	Pick up Post	A30007-107-01	1	
9	Set Screw 8-32x¼	21840-14080	1	
10	Latch Assembly (includes items 11 thru 18)	D30007-089-50		1
11	Latch	3017-D13-X1		1
12	Latch Bracket	3017-D2-X1		1
13	Screw Assembly 10-24x <sup>7</sup> / <sub>16</sub>	21911-16140		2
14	Nut 10-24	23001-00160		2
15	Support Bracket	B30007-148-01		1
16	Pin	3017-X7		1
17	Washer ¼	23601-00200		2
18	Cotter Pin ¼ <sub>16</sub> x½	24201-04160		2
19	Spacer	A31008-299-01		1
20	Spacer	3017-X16		1
21	Screw Assembly 10-24x1	21911-16320		2
22	Guide Bracket	3017-X17		1
23	Screw 8-32x <sup>3</sup> / <sub>16</sub>	21911-14101		2
24	Latch Spring	3017-X22		1
25	Actuating Rod	3017-D11-X8		1
26	Stop Collar	3017-X18		2
27	Set Screw 8-32x <sup>3</sup> / <sub>16</sub>	22903-14060		4
28	Actuating Rod Spring	3017-X23		1
29	Washer ¼	23603-00203		3
30	Cotter pin ¼ <sub>10</sub> x½	24201-04160		2
31	Gasket	3017-L13-X1		1

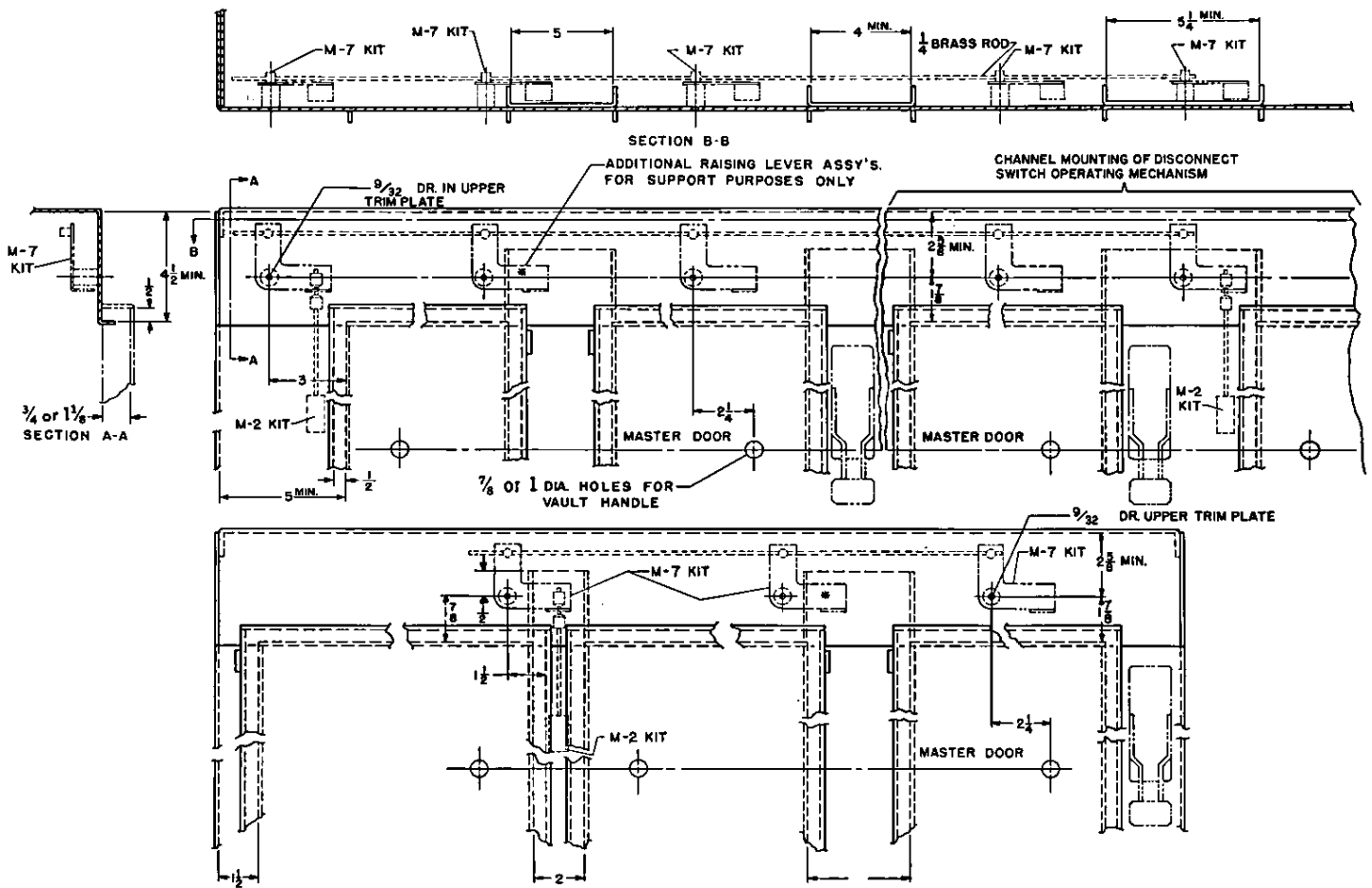
M-7



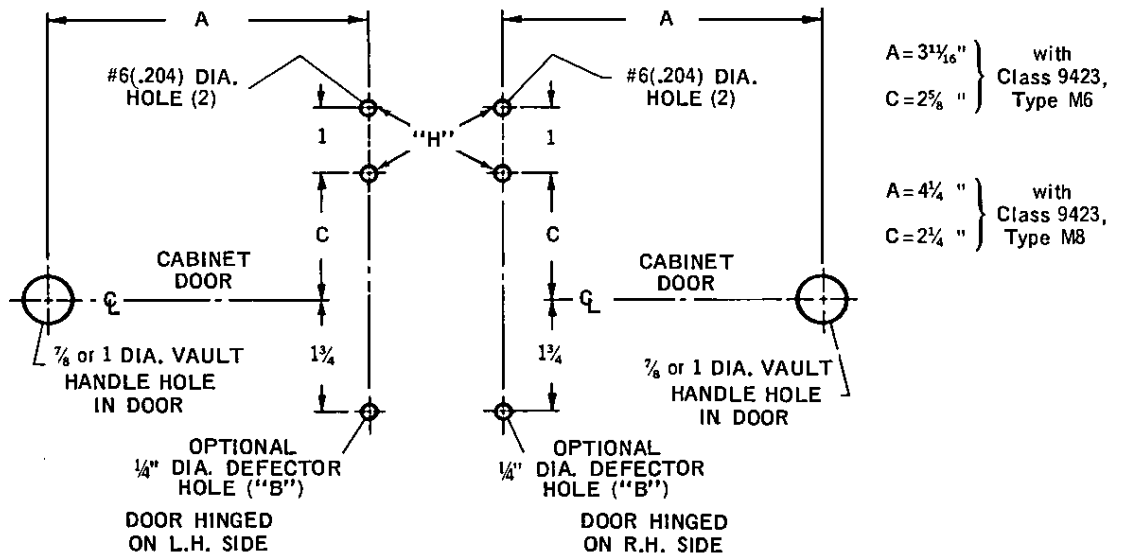
⑩ Latch Assembly  
(includes items 11 thru 18)

M-2

Figure 1



**Figure 2**  
Drilling Dimensions for Class 9423,  
Type M-7 Raising Lever Assemblies.



**Figure 3**  
Drilling Dimensions For Class 9423,  
Type M-2 Door Locking Assembly

**SQUARE D COMPANY**



# California Proposition 65 Warning—Lead and Lead Compounds

## Advertencia de la Proposición 65 de California—Plomo y compuestos de plomo

### Avertissement concernant la Proposition 65 de Californie—Plomb et composés de plomb

**⚠ WARNING:** This product can expose you to chemicals including lead and lead compounds, which are known to the State of California to cause cancer and birth defects or other reproductive harm. For more information go to: [www.P65Warnings.ca.gov](http://www.P65Warnings.ca.gov).

**⚠ ADVERTENCIA:** Este producto puede exponerle a químicos incluyendo plomo y compuestos de plomo, que es (son) conocido(s) por el Estado de California como causante(s) de cáncer y defectos de nacimiento u otros daños reproductivos. Para mayor información, visite : [www.P65Warnings.ca.gov](http://www.P65Warnings.ca.gov).

**⚠ AVERTISSEMENT:** Ce produit peut vous exposer à des agents chimiques, y compris plomb et composés de plomb, identifiés par l'État de Californie comme pouvant causer le cancer et des malformations congénitales ou autres troubles de l'appareil reproducteur. Pour de plus amples informations, prière de consulter: [www.P65Warnings.ca.gov](http://www.P65Warnings.ca.gov).

All trademarks are the property of Schneider Electric SE, its subsidiaries, and affiliated companies.

**Schneider Electric USA, Inc.**  
800 Federal Street  
Andover, MA 01810 USA  
888-778-2733  
[www.schneider-electric.us](http://www.schneider-electric.us)

Todas las marcas comerciales son propiedad de Schneider Electric SE, sus filiales y compañías afiliadas.

Importado en México por:  
**Schneider Electric México, S.A. de C.V.**  
Av. Ejercito Nacional No. 904  
Col. Palmas, Polanco 11560 México, D.F.  
55-5804-5000  
[www.schneider-electric.com.mx](http://www.schneider-electric.com.mx)

Toutes les marques commerciales sont la propriété de Schneider Electric SE, ses filiales et compagnies affiliées.

**Schneider Electric Canada, Inc.**  
5985 McLaughlin Road  
Mississauga, ON L5R 1B8 Canada  
800-565-6699  
[www.schneider-electric.ca](http://www.schneider-electric.ca)