

MOUNTING INSTRUCTIONS

DANGER - HAZARD OF ELECTRICAL SHOCK OR BURN TURN OFF POWER SUPPLYING THIS EQUIPMENT BEFORE INSTALLING OR SERVICING.

Insert notch (A) under projection on switch housing. Make sure lever arm (B) is on opposite side of housing flange as shown in Figure 2.

Secure to disc switch with screw assembly (C).

The electrical interlock top insulator will fall over the interlock snap switch to insulate it from the switch slider bar.

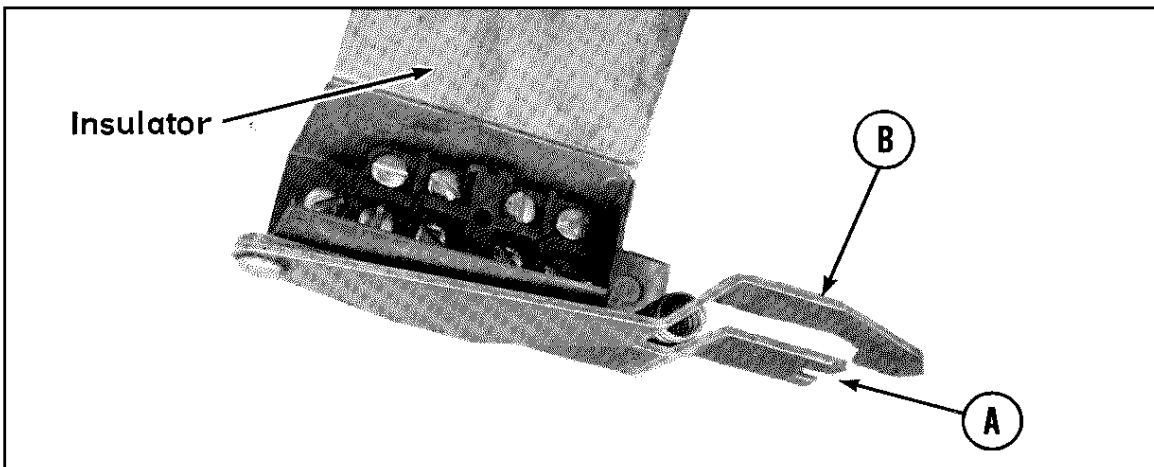


Figure 1

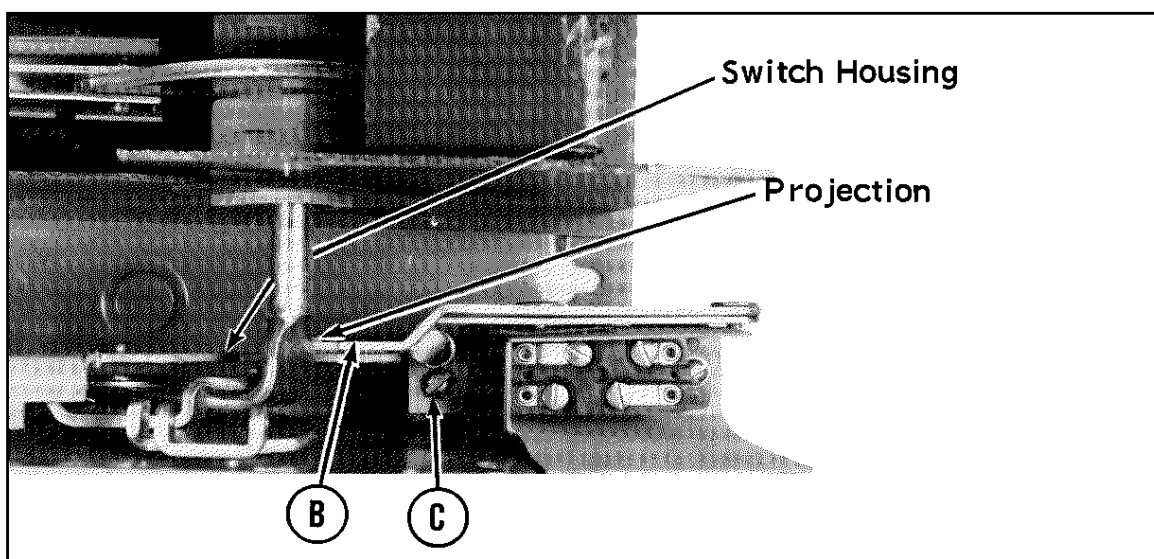


Figure 2