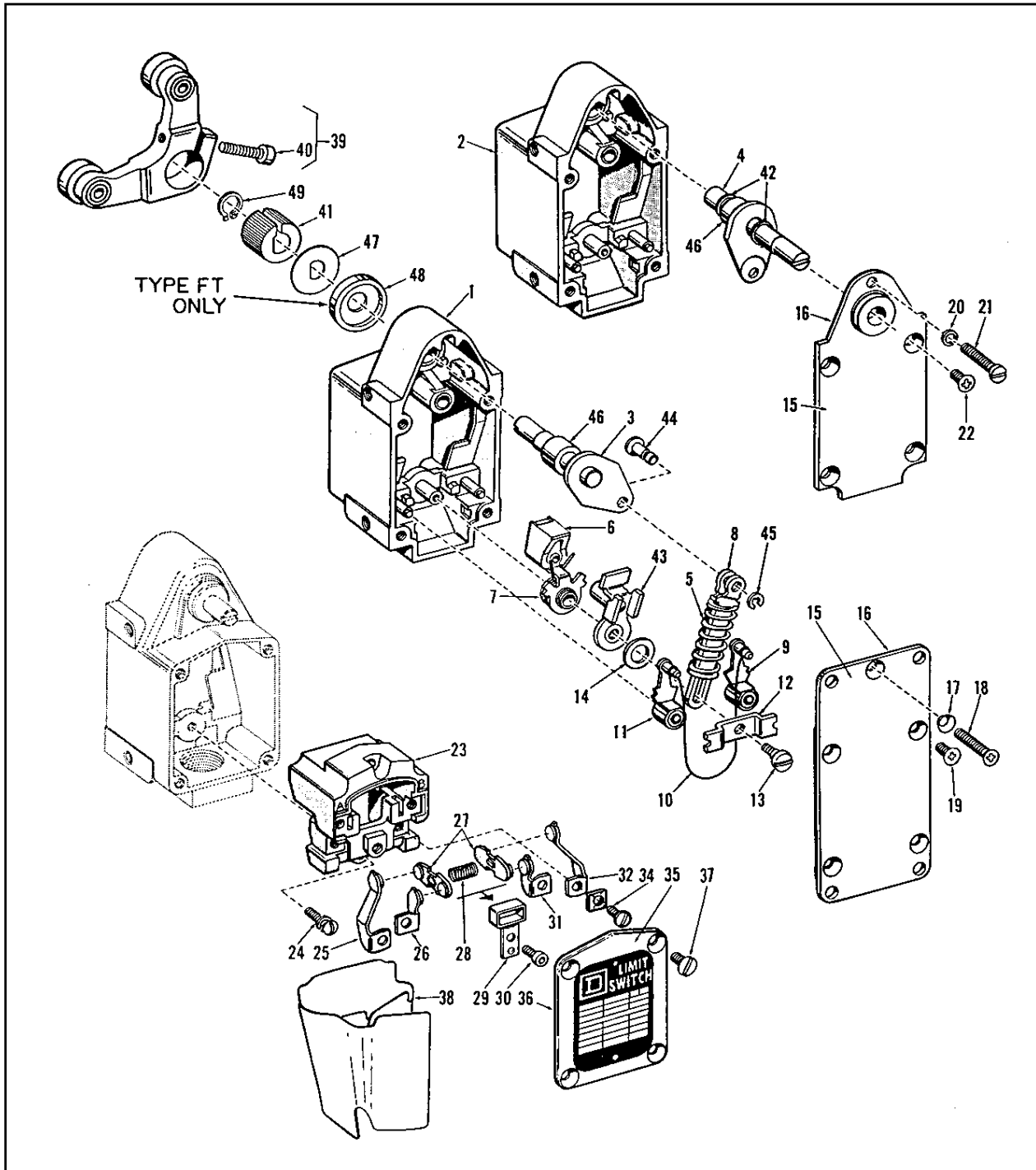




Class 9007 — Type T — Heavy Duty Oil Tight Limit Switch — Series C and Earlier  
Class 9007 — Type FT — Foundry Limit Switch — Series C and Earlier  
Maintained Contact



Supersedes Service Bulletin 289AS, dated July, 1971

SQUARE D COMPANY

JULY, 1982

PRINTED IN U.S.A. CPG

P.O. Box 472  
Milwaukee, Wis. 53201  
(414) 332-2000

PAGE 1



**ORDERING INSTRUCTIONS:** Specify quantity, part number and description of part, giving complete nameplate data of the device. For example: 2—2934-C54-G1 stationary contacts for Class 9007 Type TUB12, Series C.

For replacement lever arm, use type number stamped on lever arm. Order lever arm by complete Class and Type number. For example: Class 9007 Type X1.

**TABLE 1 — PARTS LIST**

Drawing No.	Description	Part Number	QUANTITY REQUIRED						Drawing No.	Description	Part Number	QUANTITY REQUIRED					
			SURFACE MOUNTED				FLUSH MOUNT.					SURFACE MOUNTED				FLUSH MOUNT.	
			Oil-Tight Type	Foundry Type	Oil-Tight Type	Foundry Type	Oil-Tight Type	Foundry Type				Oil-Tight Type	Foundry Type	Oil-Tight Type	Foundry Type	Oil-Tight Type	Foundry Type
1	Box (incl. Oilite Bearing)	2934-D116-G1	1	1	...	...	...	...	23	Contact Block (3 point) (Series C only)	2934-B141-G2	...	1	...	1	...	1
1	Box (incl. Oilite Bearing)	2934-C37-G3	...	...	1	1	...	...	24	Screw Assembly No. 8—32 x 3/4"	21901-14241	2	2	2	2	2	2
2	Box (incl. Oilite Bearing)	2934-D116-G3	...	...	...	...	1	1	25	Long Terminal (L.H.) (Series C only)	2934-C54-G2	1	1	1	1	1	1
3	Shaft Assembly (Series B and C only)	2934-C42-G3	1	1	...	...	...	...	26	Short Terminal (L.H.) (Series C only)	2934-C54-G4	1	1	1	1	1	1
3	Shaft Assembly (Pre Series A and Series A) Includes Item 41	2934-S22-G5	1	1	...	...	...	...	27	Contact Finger	2934-D16-G1	2	...	2	...	2	...
3	Shaft Assembly	2934-C36-G3	...	...	1	1	...	...	28	Contact Finger Assembly (3 Point)	2934-D43-G2	...	1	...	1	...	1
4	Shaft Assembly (Series B and C only)	2934-C43-G3	...	...	...	...	1	1	29	Contact Finger Spring	2934-X38	1	1	1	1	1	1
4	Shaft Assembly (Pre Series A and Series A) Includes Item 41	2934-S22-G6	...	...	...	...	1	1	30	Finger Guide	2934-G8	1	1	1	1	1	1
5	Spring	30017-093-01	1	1	1	1	1	1	31	Allen Socket Head Cap Screw No. 8—32-3/8"	21601-14120	1	1	1	1	1	1
6	Contact Arm Assembly	2934-D24-G2	1	1	1	1	1	1	32	Short Terminal (R.H.) (Series C only)	2934-C54-G3	1	1	1	1	1	1
7	Contact Operating Spring	2934-D6-X1	1	1	1	1	1	1	33	Long Terminal (R.H.) (Series C only)	2934-C54-G1	1	1	1	1	1	1
8	Spring Guide	2934-C31-X1	2	2	2	2	2	2	33	Contact Block with Terminals	2934-C55-G1	1	...	1	...	1	...
9	R.H. Latch Assembly	2934-D25-G1	1	1	1	1	1	1	34	Contact Block with Terminals (3 pt)	2934-C55-G2	...	1	...	1	...	1
10	Latch Spring	2934-D119-X1	1	1	1	1	1	1	35	Terminal Screw	21501-14120	4	5	4	5	4	5
11	L.H. Latch Assembly	2934-D25-G2	1	1	1	1	1	1	36	Top Cover (Including Item 36)	2934-C28-G7	1	...	...	...	...	1
12	Clamp Plate	2934-C34-X1	1	1	1	1	1	1	37	Top Cover (Including Item 36)	2934-C28-G8	...	1	...	...	...	1
13	Screw	2934-D118-X1	1	1	1	1	1	1	38	Top Cover (Including Item 36)	2934-C28-G13	...	1	...	...	...	1
14	Washer	30018-037-01	1	1	1	1	1	1	39	Top Cover (Including Item 36)	2934-C28-G14	...	1	...	...	...	1
15	Base Plate Complete Includes Item 16 for All Styles Manifold Gasket for Styles E, F & G and Mounting Gasket for Style R)	See Table 2	1	1	1	1	1	1	40	Cover Gasket	2934-D2-X1	1	1	1	1	1	1
16	Base Plate Gasket	2934-D3-X1	1	1	1	1	1	1	41	Screw No. 10—24 x 5/8"	214-X89	4	4	4	4	4	4
1	Manifold Gasket for Style E Base Plate	2934-D35-X1	1	1	1	1	1	1	42	Standard Liner	2934-D1-X1	1	1	1	1	1	1
1	Manifold Gasket for Style F Base Plate	2934-D36-X1	1	1	1	1	1	1	43	Operating Lever Arm Complete (includes Item 40)	See Ordering Inst. above	1	1	1	1	1	1
1	Manifold Gasket for Style G Base Plate	2934-D37-X1	1	1	1	1	1	1	44	Allen Socket Head Cap Screw No. 10—24 x 7/8"	21601-16280	1	1	1	1	1	1
1	Mounting Gasket for Style R Base Plate	2934-D73-X1	...	...	1	1	1	1	45	Hub	2934-D130-X1	...	1	...	1	...	1
17	Seal Washer	2934-X29	1	1	1	1	1	1	46	Hub	2934-D130-X2	1	1	1	1	1	1
18	Screw No. 10—24 x 1-1/8"	21726-16360	1	1	1	1	1	1	47	Retaining Ring	29908-02410	...	...	...	...	2	2
19	Screw No. 10—24 x 1/2"	21726-16160	4	4	4	4	4	4	48	Trip Lever Assembly	2934-C32-G1	1	1	1	1	1	1
20	Seal Washer	2934-X35	...	...	...	...	1	1	49	Pin	2934-D120-X1	1	1	1	1	1	1
21	Screw No. 10—24 x 1-1/4"	21101-16400	...	...	...	...	1	1	46	Retaining Ring	29907-00810	1	1	1	1	1	1
22	Screw No. 10—24 x 1/2"	21715-16160	...	...	...	...	4	4	47	Spacer	2934-D121-X1	1	1	1	1	1	1
23	Contact Block (Series C only)	2934-B141-G1	1	...	1	...	1	...	48	Washer	30018-050-01	...	1	...	1	...	1
									49	Dust Boot	2934-D129-X1	...	1	...	1	...	1
										Retaining Ring	29915-02410	1	1	1	1	1	1

† Not shown on drawing.  
 \* Requires 5/32" Allen wrench (Square D part number 29008-01010).  
 ▲ Suitable for all Series.  
 ■ Pre-series C terminals and contact block are no longer available. Series C terminals do not fit pre-series C contact block. When replacing terminals on a pre-series C device, order item no. 33.

**TABLE 2 — BASE PLATES (3rd letter in type number)**

**ORDERING INSTRUCTIONS:** Style letter is stamped on each base plate. Order replacement base plate by corresponding part number shown below. For example: Order Style B base plate as part number 2934-D14-G1.

Style	Part Number	Style	Part Number	Style	Part Number	Style	Part Number	Style	Part Number
A	2934-D32-G1	C	2934-D33-G1	E	2934-D14-G2	G	2934-D34-G2	R	2934-C30-G4
B	2934-D14-G1	D	2934-D34-G1	F	2934-D33-G2	H	2934-D48-G1	S	2934-C30-G6

**CONTACTS** — All contacts are silver and are not harmed by discoloration or slight pitting. DO NOT FILE THEM as dressing wastes contact material. Replacement is necessary only when the silver has worn thin.

To inspect the contacts remove and fold back liner. To replace stationary contacts, remove contact block. Terminal screw can then be removed allowing contacts to be lifted from the contact

block. To replace movable contacts, remove screw (30) with 9/64" Allen wrench and lift out finger guide. Movable contacts can be released after taking out contact spring (28).

**MECHANISM** — To inspect or adjust switch mechanism, remove base plate. When removing and replacing base plate screws, be sure to place sealing washer (17) under head of screw (18). Removal of screw (13) allows disassembly of all mechanism parts.

•Revised.