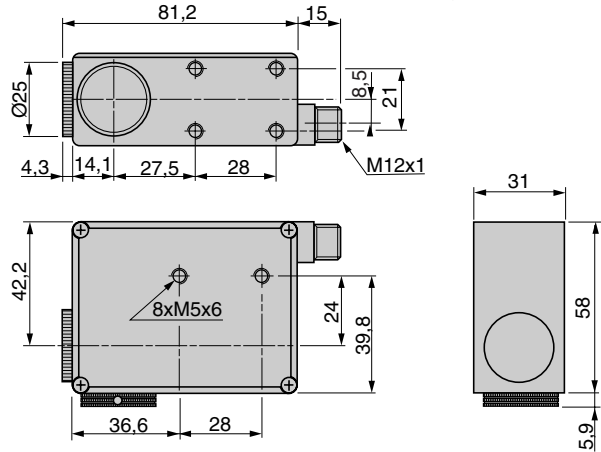
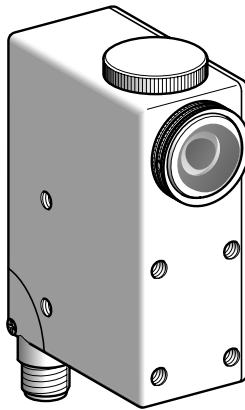




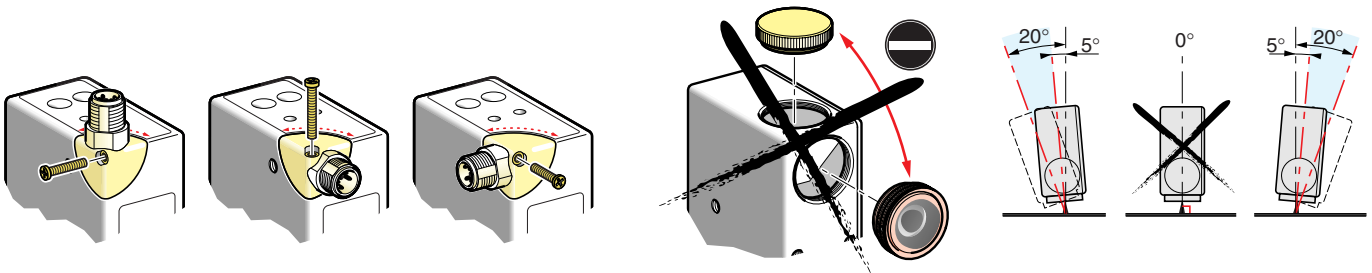
# Osiris XUR-U1KSMM12



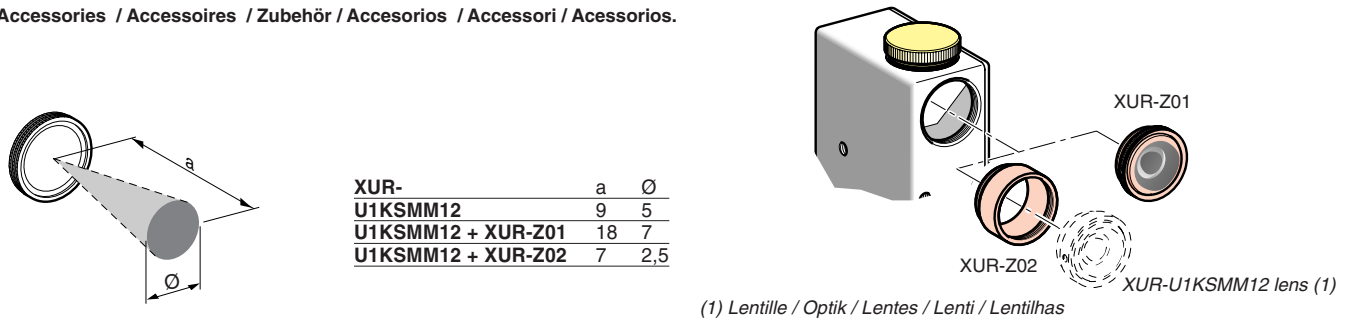
Luminescence detectors with learning capability / Détecteurs de luminescence à apprentissage / selbstlernender Luminiszenzlichttaster / Detectores luminescentes autoajustable / Rilevatore di luminescenza ad auto-apprendimento / Detectores de luminescência por aprendizagemem.



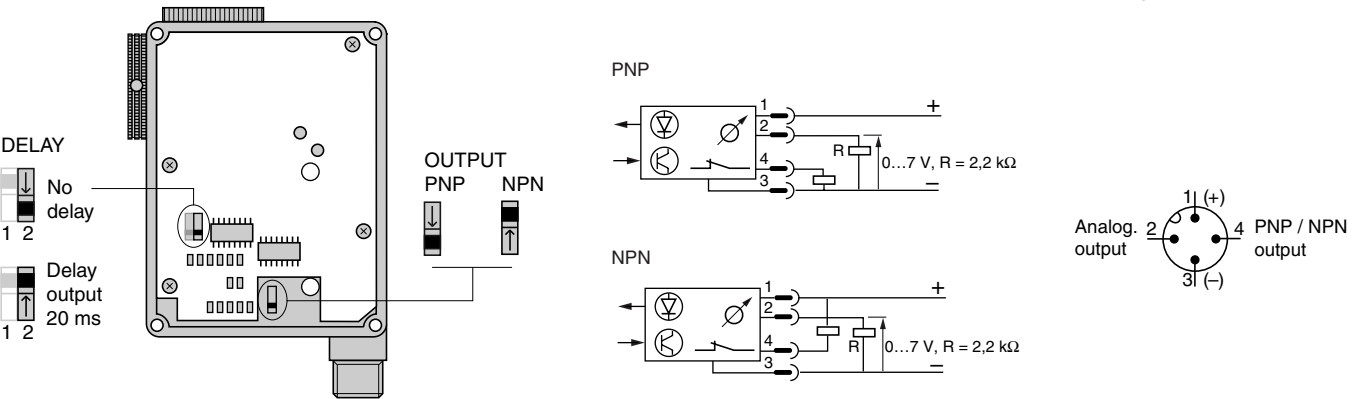
## Mechanical installation / Mise en œuvre mécanique / Mechanische Installation / Instalación mecánica / Messa in opera meccanica / Instalação mecânica



## Accessories / Accessoires / Zubehör / Accesorios / Accessori / Acessorios.

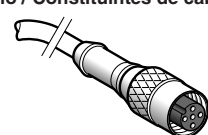


## Electrical installation / Mise en œuvre électrique / Elektrische Installation / Instalación eléctrica / Messa in opera elettrica / Instalação eléctrica

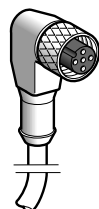


Voltage limit / limites de tension / Betriebsspannung / Límites de tensión / Limiti di rensonce / Limite de tensão	10...30 V $\bar{\text{=}}$
Switching capacity / Courant commuté / Schaltstrom / Intensidad conmutada / Corrente commutata / Corrente comutada	$\leq$ 200 mA
Power consumption / Puissance consommée / Leistung / Potencias consumida / Potenza consumata / Potencia consumida	$\leq$ 80 mA
Response time / Temps de réponse / Antwortzeit / Tiempo de respuesta / tempo di risposta / Tempo de resposta.	250 $\mu$ s
Analog output / Sortie analogique / Analogausgang / Salida analógica / Uscita analogica / Saída analógica.	0...7 V, R = 2,2 kΩ

## Machine cabling accessories / Constituants de câblage machines / Zuberhør für Maschinen-Anschlußtechnik / Constituyentes de conexianado / Accessori di cablaggio / Constituintes de cablagem

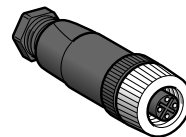


XZC-P1141L2 (2m)  
XZC-P1141L5 (5m)  
XZC-P1141L10 (10m)

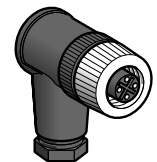


XZC-P1241L2 (2m)  
XZC-P1241L5 (5m)  
XZC-P1241L10 (10m)

XZC-P1340L  
XZC-P1440L

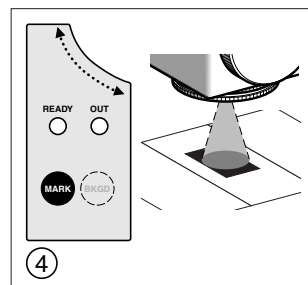
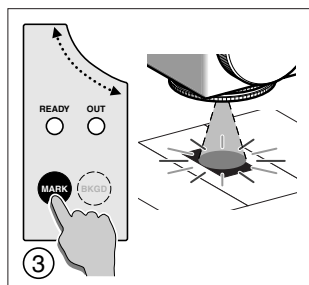
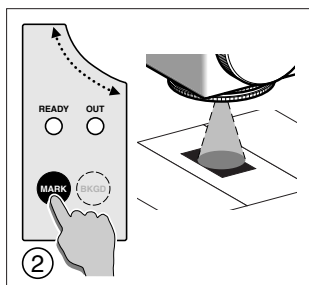
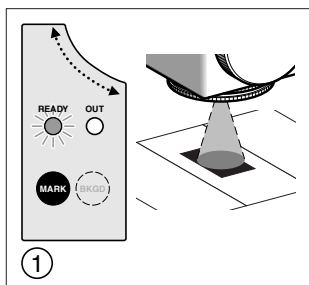


XZC-C12FDM40B



XZC-C12FCM40B

## A - Learning the mark / Apprentissage de la marque / einlernen der Druckmarke / Memorización de la marca / apprendimento della tacca / Aprendizagem da marca.



### Attach the product firmly to its support

- ① Position the beam on the brightening mark
- ② Keep «MARK» depressed until the green LED goes out
- ③ Wait for the spot emission to stop flashing (t=2s)
- ④ Learning of the mark is completed.

### Fixer rigidement le produit sur son support

- ① Positionner le faisceau sur la marque azurante
- ② Maintenir appuyé sur MARK jusqu'à l'extinction de la diode verte
- ③ Attendre que l'émission du spot arrête de clignoter (t=2s)
- ④ L'apprentissage de la marque est terminé.

### Das Gerät muß auf einem festen Untergrund montiert werden

- ① die Optik ist über der optisch aufgehellen Marke zu positionieren
- ② die Taste «MARK» so lange drücken bis grüne LED erlischt
- ③ warten bis der Lichtspot aufhört zu blinken (=2s)
- ④ das Einlernen der Marke ist beendet.

### Fijar rigidamente el producto en el soporte

- ① Posicionar el haz sobre la marca
- ② Pulsar sobre "MARK" hasta que se apague el LED verde
- ③ Esperar hasta que la emisión del haz deje de parpadear (t=2s)
- ④ La memorización de la marca ha finalizado.

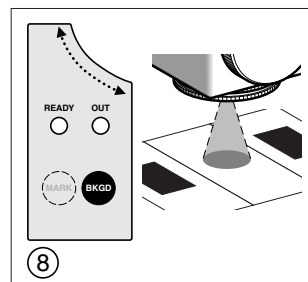
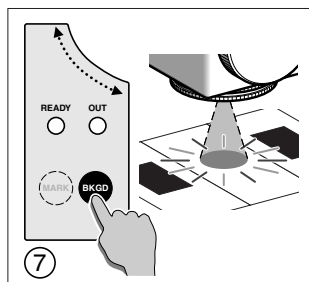
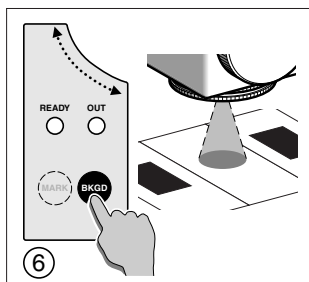
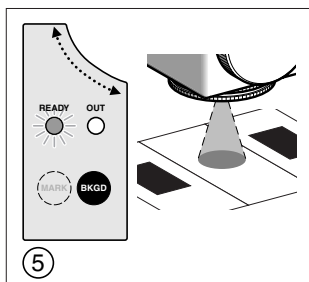
### Fissare rigidamente il prodotto sul suo supporto

- ① posizionare il fascio luminoso sulla parte azzurrante
- ② mantenere premuto "MARK" sino allo spegnimento del diodo verde
- ③ attendere che la luce dello spot smetta di lampeggiare (t=2sec)
- ④ la memorizzazione della tacca è terminata.

### Fixar rigidamente o produto sobre o seu suporte

- ① Posicionar o feixe sobre a marca azulada
- ② Manter a pressão sobre "MARK" até a extinção do diodo verde
- ③ Aguardar que a emissão do spot não esteja mais intermitente (t=2s)
- ④ A aprendizagem da marca está terminada.

## B - Learning the background / Apprentissage du fond / Einlernen des Untergrundes / Memorización del fondo / Apprendimento del fondo di supporto / Aprendizagem do fundo.



- ⑤ Position the beam on the background
- ⑥ Keep «BKGD» depressed until the green LED goes out
- ⑦ Wait for the learning to take place (t=2s)
- ⑧ Learning of the background is completed, green LED ON.

- ⑤ Positionner le faisceau sur le fond
- ⑥ Maintenir appuyé sur BKGD jusqu'à l'extinction de la diode verte
- ⑦ Attendre que l'apprentissage s'effectue (t=2s)
- ⑧ L'apprentissage du fond est terminé, DEL verte ON.

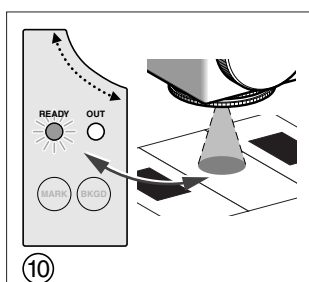
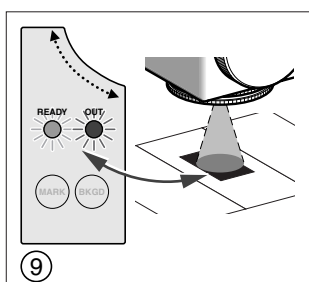
- ⑤ positionieren des Lichtspots über den Untergrund
- ⑥ die Taste «BKGD» so lange drücken bis grüne LED erlischt
- ⑦ warten bis die Einlernzeit abgeschlossen ist (=2s)
- ⑧ das Einlernen des Untergrundes ist beendet, grüne LED EIN.

- ⑤ Posicionar el haz sobre el fondo
- ⑥ Pulsar sobre "BKGD" hasta que se apague el diodo verde
- ⑦ Esperar hasta que la memorización se efectue (t=2s)
- ⑧ La memorización del fondo ha finalizado, LED verde ON.

- ⑤ posizionare il fascio luminoso sul fondo
- ⑥ mantenere premuto "BKGD" sino allo spegnimento del diodo verde
- ⑦ attendere che avvenga l'auto-apprendimento (t=2sec)
- ⑧ la memorizzazione del fondo è terminata, led verde= ON.

- ⑤ Posicionar o feixe sobre o fundo
- ⑥ Manter a pressão sobre "BKGD" até a extinção do diodo verde
- ⑦ Aguardar que a aprendizagem se efectue (t=2s)
- ⑧ A aprendizagem do fundo está terminada, LED verde ON.

## C - Operation / Exploitation / Betrieb / Explotación / Impiego / Exploração .



- ⑨ The product is ready to function
- ⑨ Detection of mark: green and red LED ON
- ⑩ Detection of background; green LED ON, red LED OFF.

- ⑨ Le produit est prêt à fonctionner
- ⑨ Détection de la marque : DEL verte et rouge ON.
- ⑩ Détection du fond ; DEL verte ON, DEL rouge OFF.

- ⑨ Das Produkt ist funktionsbereit
- ⑨ Erkennung der Marke: grüne und rote LED EIN
- ⑩ Erkennung des Untergrundes : grüne LED EIN, rote LED AUS.

- ⑨ El producto está listo para funcionar
- ⑨ Detección de la marca : LED verde y rojo ON
- ⑩ Detección del fondo: LED verde ON, LED rojo OFF

- ⑨ Il prodotto è pronto a funzionare
- ⑨ rilevamento della tacca : LED verde e rosso ON.
- ⑩ Rilevamento del fondo: led verde= ON, led rosso= OFF.

- ⑨ O produto está pronto a funcionar
- ⑨ Detecção da marca: LED verde e LED vermelho ON.
- ⑩ Detecção do fundo: LED verde ON, LED vermelho OFF.