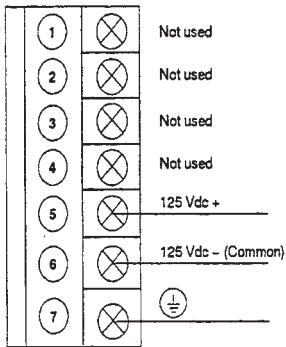


Modicon
140 CPS 511 00
125 VDC Power Supply

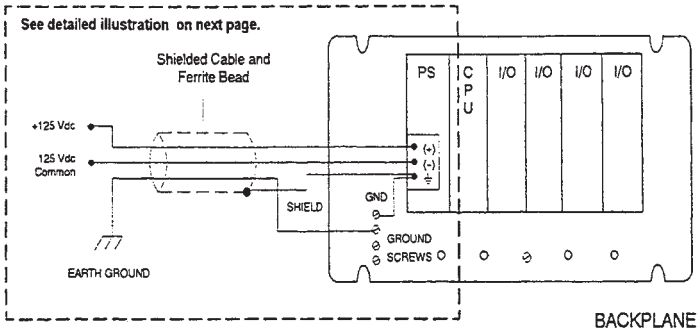
Publication # 043504729

Output Rating 3 A
Input Voltage 100 ... 150 Vdc
Fusing 1.5 A slo-blo recommended (Modicon # 043502515 or equivalent)
Connector 7 point terminal connector (Modicon # 043506325)

Wiring Diagram

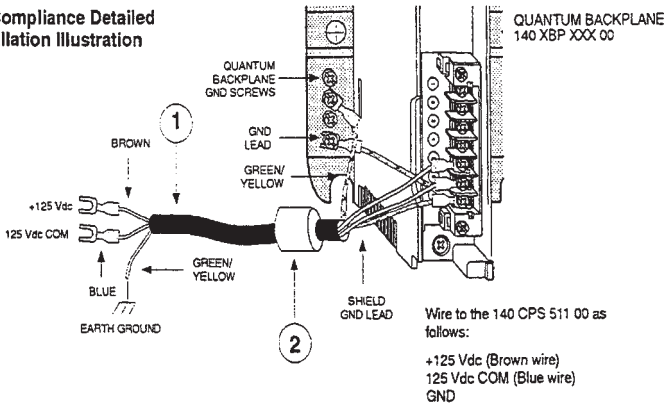


140 CPS 511 00 Power and Grounding Configuration for CE Compliance



Caution: To maintain CE compliance with the European Directive on EMC (89/336/EEC), the 140 CPS 511 00 must be installed in accordance with these instructions.

**CE Compliance Detailed
Installation Illustration**



Parts List

Callout	Vendor (or equivalent)	Part Number	Description	Instruction
①	Oflex - Series 100cy	35005	Line Cord	Terminate the shield at the power supply GND terminal
②	Steward	28 B0686-200	Ferrite Bead	Install next to the filter and secure with tie wraps at both ends of the ferrite bead
	Fair Rite	2643665702		

For complete information concerning this and other modules, please obtain a copy of the *Quantum Automation Series Hardware Reference Guide* (840 USE 100 00) from your distributor or local Square D office.

