

SHEDDING LIGHT ON TITLE 24 2013 LIGHTING CONTROL STANDARDS*

Part 6: Building Energy Efficiency Standards

California's Building Energy Efficiency Standards are updated approximately every three years.

Effective July 2014, the 2013 code introduces new lighting control requirements.

Sections with notable changes include: 110.9 / 130.1 / 130.4 / 130.5 / 141.0

130.1(d) Automatic Daylighting Controls

New rules for daylight controls apply to three defined daylit zones:

1. Skylit
2. Primary sidelit
3. Secondary sidelit



110.9(a) Title 20

Lighting controls must meet California Title 20 Appliance Efficiency Regulations.



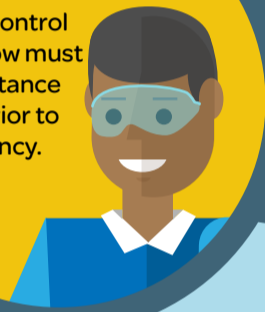
130.1(a) Area Controls

With fewer exceptions than previously allowed, all lights must have dedicated manual On/Off controls in the same room or area.



130.4(a), (b) Acceptance Testing

Lighting control systems now must be acceptance tested prior to occupancy.



130.1(b) Multi-Level Lighting Controls

Greater dimming capability is required. Manual dimming must include three intermediate levels, up from just one in the 2008 code.



130.5 (a), (b) Metering and Disaggregation

Increased requirements for usage metering and requirements for disaggregation of electrical circuits are defined in a new *Electrical Power Distribution Systems* section.



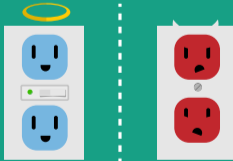
130.1(c) Shutoff Controls

Occupancy-based shutoff controls are now mandatory in certain areas of warehouses and libraries. Hotels must have occupancy controls installed for all lighting and HVAC.



130.5(d) Circuit Controls for 120-Volt Receptacles

Automatic receptacle shutoff is mandatory in private offices, open-office areas, conference rooms, reception lobbies, kitchens, and copy rooms.



141.0 (i) Threshold for Compliance

Lighting alterations affecting at least 10% (previously 50%) of luminaires are subject to Title 24 standards.



Schneider Electric has a code-compliant lighting control solution for every room. From standalone sensors to networked control systems, we've got you covered.

We have all your lighting control solutions.

For more information: www.mysecontrols.com/appguide

Email admin@mysecontrols.com to put you in contact with a sales person.